

E³
series

E³.ETPrint

Label Print



Technical Inquiries

Please contact our Support Department!

E-Mail: e3-support@zuken.com

Note:

Zuken is not responsible for any errors, which may appear in this documentation. Liability, due to direct and indirect losses resulting from the delivery or use of this documentation, is excluded to the extent permitted by law. This documentation contains copyrighted information. All rights, especially those pertaining to the duplication and distribution as well as the translation, are reserved. This documentation, whether wholly or in part, may not be reproduced in any form (photocopy, microfilm, etc.), or processed, duplicated or distributed using an electronic system without Zuken's prior written consent.

Contact

Zuken E3 GmbH
Lämmerweg 55
D-89079 Ulm/Einsingen

Phone: 07305/9309-0
Fax: 07305/9309-99
Web: <http://www.zuken.com>
E-Mail: e3-info@Zuken.com

Contents

1	Introduction.....	1
1.1	Product Description	1
1.2	Workflow	1
1.3	System Prerequisites	2
2	Installation	3
2.1	Program Installation	3
2.2	Configurations	6
2.2.1	Create Attributes	6
2.2.2	Integrating the Add-ons Menu	7
3	User Interface.....	8
3.1	Tabs.....	8
3.1.1	Buttons Appearing in All Tabs.....	8
3.1.2	'Data' Tab	9
3.1.3	'Label sheet' Tab	13
3.1.4	'Additional label data' Tab.....	15
3.1.5	'Print to file' Tab.....	16
3.1.6	'M-Print PRO' Tab	17
3.1.7	'PROJECT complete' Tab	20
3.2	Main Menu	22
3.2.1	Main Menu 'File'	22
4	Functional Description	23
4.1	Open/Close	23
4.1.1	Open E³.ETPrint	23
4.1.2	Close E³.ETPrint	23
4.2	Operation.....	23
4.2.1	Open/Save Configuration.....	23
4.2.2	Label Sheet Preview.....	24
4.2.3	Print Label Sheet	25
4.2.4	Export to M-Print PRO	26
4.2.5	Export and Open in M-Print-PRO or Export and Print in M-Print PRO	26
4.2.6	Print to file	27
4.2.7	Save as PROJECT complete.....	28
4.2.8	Export / open in PROJECT complete	28

1 Introduction

1.1 Product Description

E³.ETPrint is used to create device labels from an **E³.series** project. By using a filtering/selection mechanism it is possible to specify which devices should or should not appear when outputting labels. Filtering can be done by *device designation, higher level assignment, location* and by *set filter attributes*.

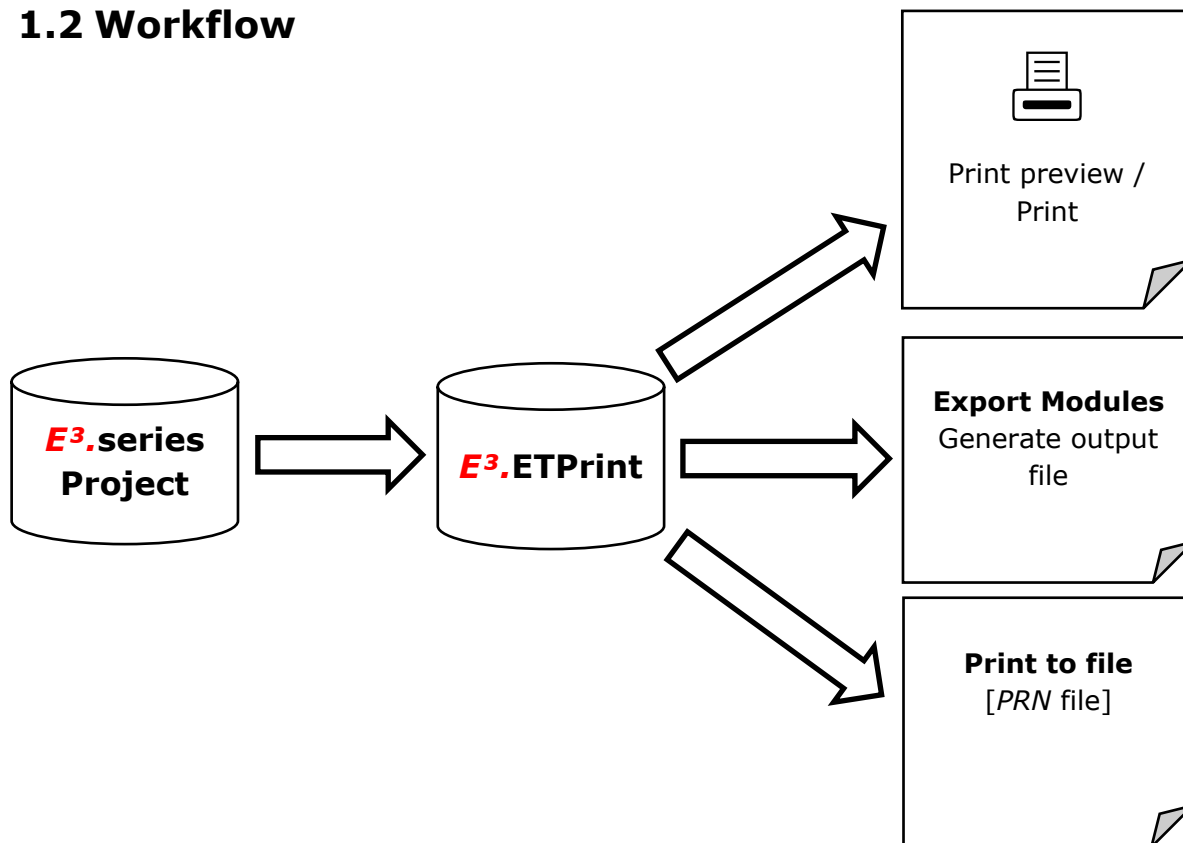
The following devices can be defined via the selection mechanism:

- 'normal' devices
- connectors
- cables
- cable ducts
- blocks
- mounting rails
- tubes
- hoses
- terminals


The labels can be output in the following formats:

- Print preview / Print
- M-Print PRO (open directly in M-Print PRO / or as CSV file)
- Print to file (as *PRN* file)

1.2 Workflow



1.3 System Prerequisites

SYSTEM PREREQUISITIES	
	Operating Systems <ul style="list-style-type: none"> • Windows 7 • Windows 8(.1) • Windows 10
	Minimum System Prerequisites <ul style="list-style-type: none"> • 2 GHz CPU or higher • 4 GB RAM • 10 GB free disk space on hard disk (for normal installation)
	Software Prerequisites <ul style="list-style-type: none"> • E³.series • .NET Version 4.6.2
	Hardware Prerequisites <ul style="list-style-type: none"> • 3-button, scroll-wheel mouse • DVD-ROM drive (for installation) • Recommended: 19" True Color or Wide Screen monitor with 1280*1024 resolution; alternatively Dual Screen solution.

2 Installation

NOTE

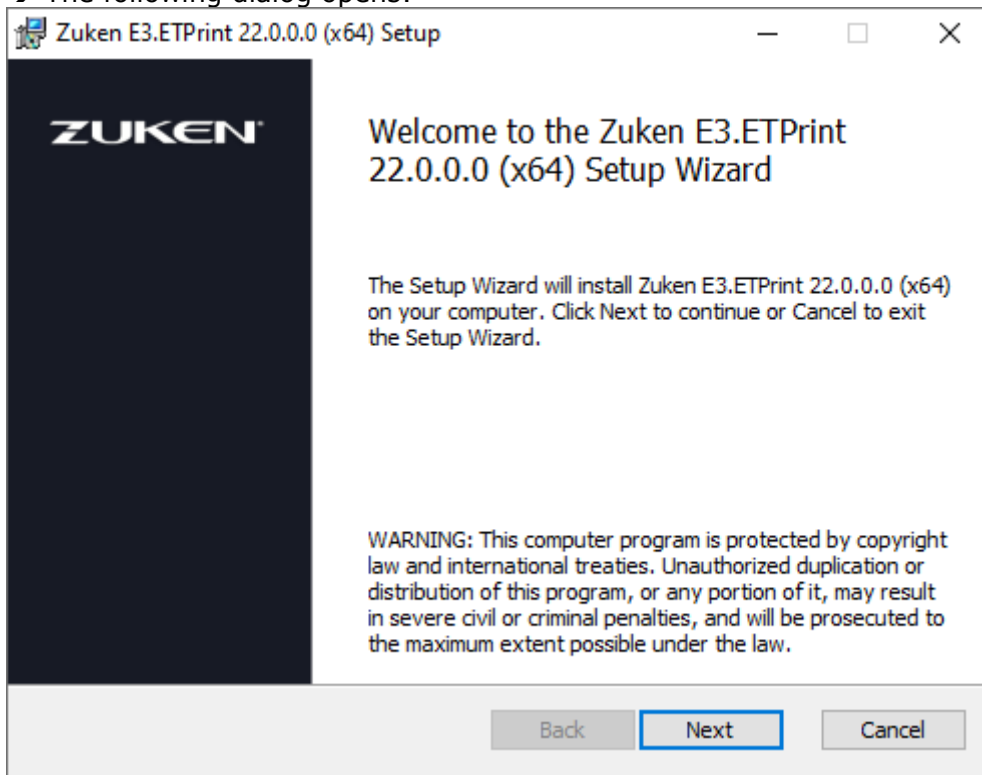


- Before installing, please make sure the system prerequisites for this product have been fulfilled (see 1.3 System Prerequisites).
- Before installing, close all **E3.series** applications.

2.1 Program Installation

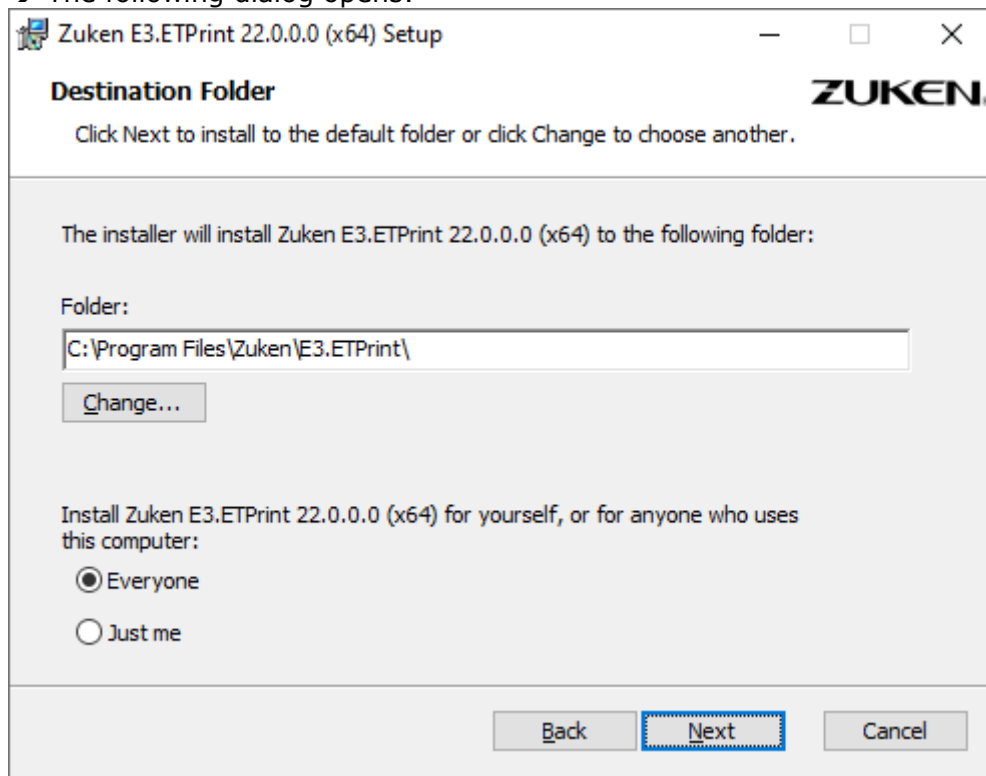
To install **E3.ETPrint** on your computer:

1. Double-click on the file `E3.ETPrint.msi` and run the application.
→ The following dialog opens:



2. Click **Next**.

→ The following dialog opens:

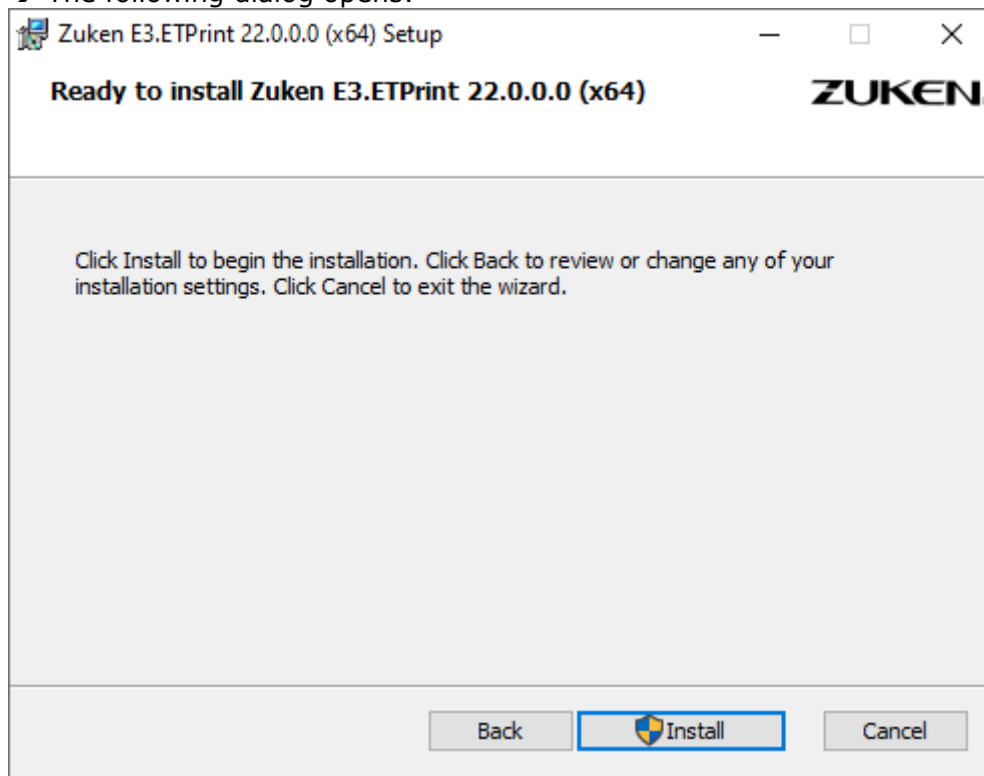


Under **Folder:** manually enter the installation path for **E3.ETPrint** or click the **Change...** button to select the installation path for **E3.ETPrint** using the Explorer.

Using the radio buttons one can specify if the program shall be used by every user on this computer (**Everyone**) or only for yourself (**Just me**).

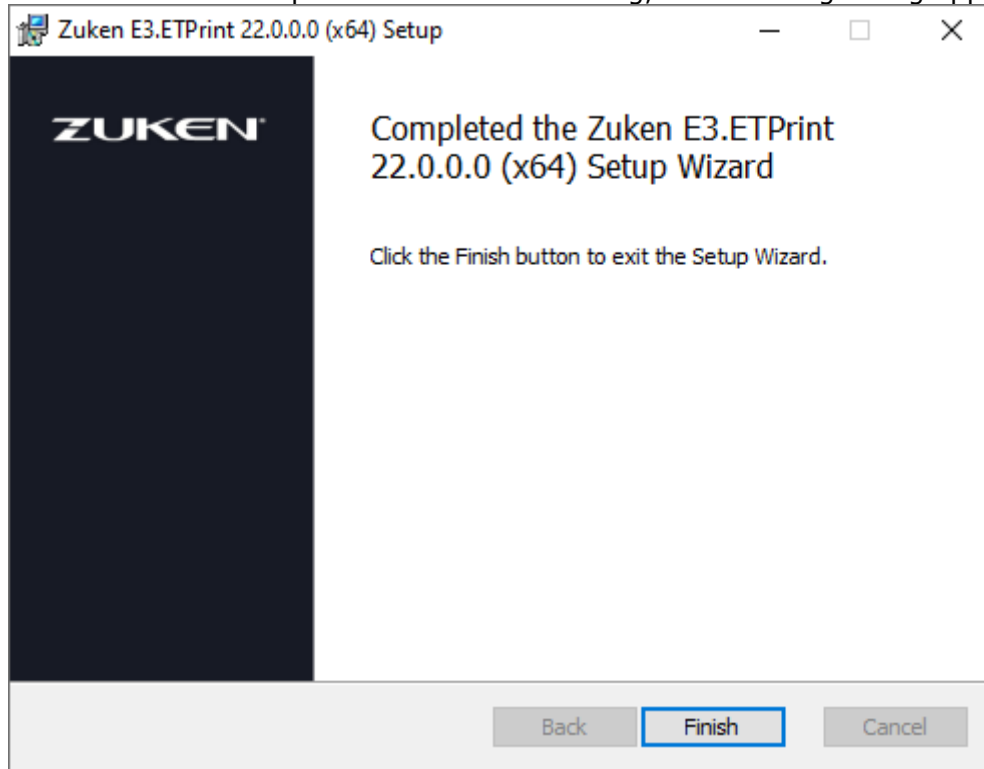
3. Enter the desired installation path and then click **Next**.

→ The following dialog opens:



4. Click **Install**.

→ The installation is performed. After installing, the following dialog appears:



2.2 Configurations

After the installation has been completed, the following configurations must be carried out.

2.2.1 Create Attributes

First, certain attributes required by **E³.ETPrint** must be created in **E³.series**. The attributes to be created are defined in the "AddAttributes.ini" file.

The following attributes are created by default:

Attribute	Owner
Weidmueller_Marker_ArticleNumber	Cable, Component, Connector, Device, Block device, Cable type, Hose/Tube, Hose type/Tube type
Weidmueller_No_Marker	Cable, Component, Connector, Device, Block device, Cable type, Hose/Tube, Hose type/Tube type

How to create the required attributes:

Note: Make sure that a maximum of one **E³.series** application is running.

- Double-click on the script "AddAttributes.vbs" under ...\\E3.ETPrint\\Scripts
- The script is executed and **E³.series** closes automatically.
- The attributes are saved in the configuration database set in **E³.series**.
- After successful setup, the list of attribute names in the **E³.series** database editor should contain the newly created attributes of **E³.ETPrint**:

Edit Attribute Names										
Name	Display name	Type	Owner	Single in	Unique	Format	Size	P	Po	Color
Weidmueller_Marker_ArticleNumber	Weidmueller_Marker_ArticleNumber	Integer	Cable, Compon	<input checked="" type="checkbox"/>	<no entr	value	2.5 mm	0	0 n	Automatic
Weidmueller_No_Marker	Weidmueller_No_Marker	Integer	Cable, Component, Connector, Device, Block device, Cable type, Hose/Tube, Hose/Tube type							
Weight	Weight	String	Cable, Cable co	<input checked="" type="checkbox"/>	Object	value	2.5 mm	0	-4	Automatic

Both scripts must be opened with the 32-bit version of the "wscript.exe" in 64-bit operating systems. The 32-bit version of "wscript.exe" is available in the Windows folder under "SysWOW64\\wscript".

Example: C:\\WINDOWS\\SysWOW64\\wscript.exe "C:\\Program Files (x86)\\Zuken\\E3.ETPrint\\Scripts\\AddAttributes.vbs"

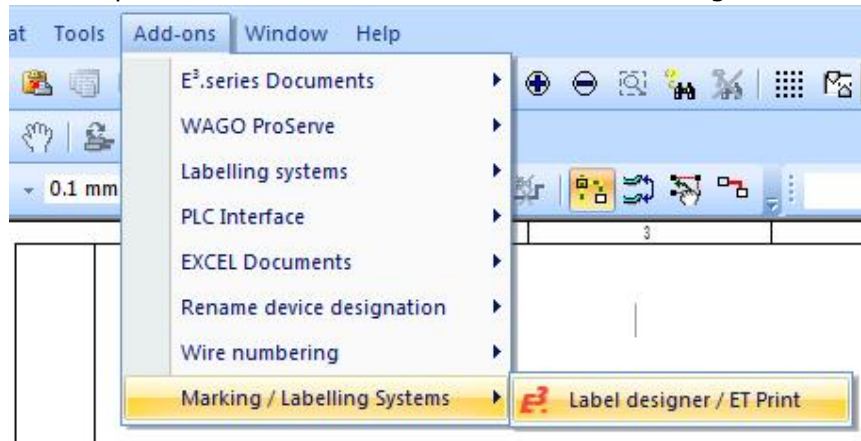
2.2.2 Integrating the Add-ons Menu

Special tools can be integrated into **Add-ons** in **E³.series**.

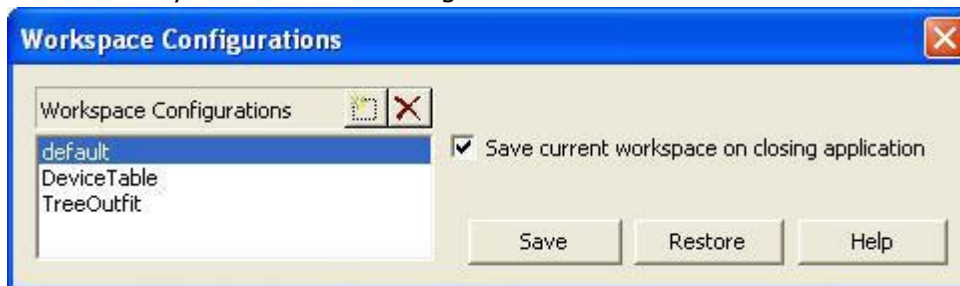
How to integrate the add-ons menu in E3:

Note: Make sure that a maximum of one **E³.series** application is running.

- Double-click on the script "BuildToolsMenu.vbs" under ...\\E3.ETPrint\\Scripts
- The script is executed and the Add-ons menu is integrated in **E³.series**:

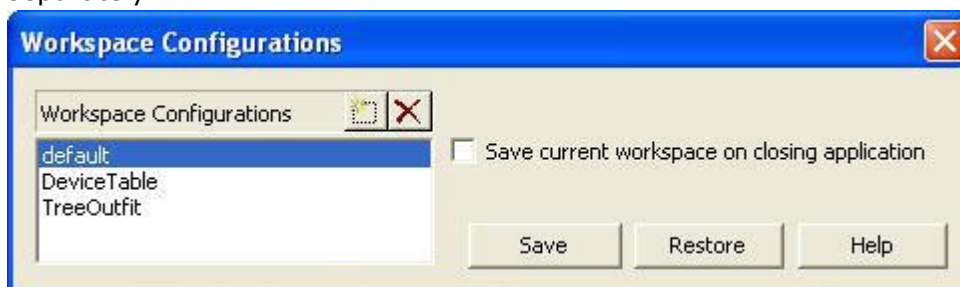


If you want to make changes to the add-ons menu yourself, we recommend reading the following chapter. After embedding, the user should check whether the settings are automatically saved when closing **E³.series**.



To do so, call up the command "**View -> Workspace Configurations**".

If the check box is NOT activated (default setting), the current configuration must be saved separately.



3 User Interface

The **E3.ETPrint** user interface is a separate dialog window that is divided into six tabs. The options and buttons within a tab are split into areas demarcated by a frame. The setting values used can be saved as a configuration (see 4.2.1 Open/Save configuration).

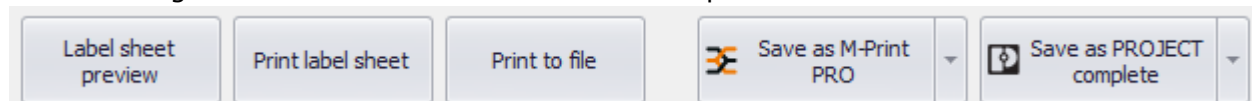
3.1 Tabs

The **E3.ETPrint** user interface is split into the following tabs:

- **Data**
- **Label sheet**
- **Additional label data**
- **Print to file**
- **M-Print Pro**
- **PROJECT complete**

3.1.1 Buttons Appearing in All Tabs

The following buttons are available in all tabs as a special feature:



Label sheet preview	Displays the print preview of the label sheets.
Print label sheet	If the option Printer selection in the Label sheet tab is selected, the default printer selection dialog appears after clicking the <i>Print</i> button. After defining the printer, the print preview is opened.
Print to file	The output is exported to a <i>PRN</i> file in ASCII format (additional information under 4.2.6 Print to file).
Save as M-Print Pro	Creates a 'container' (zip file) in the predefined default directory with a CSV file and control files. This container can be opened on another computer (see 4.2.4 Export to M-Print PRO).
Export / open in M-Print PRO	Exports the CSV file to the defined default directory. The file name is not queried beforehand. M-Print PRO is then opened automatically.
Save as PROJECT complete	Creates a CSV file in the predefined output directory per E³.series export group.
Export / open in PROJECT complete	Exports the CSV files to the predefined output directory. Afterwards, PROJECT complete opens automatically.

3.1.2 'Data' Tab

E³.ETPrint (3.5.10.0) - C:\ProgramData\Zuken\E3.ETPrint\ETPrint.etc

File

Data Label sheet Additional label data Print to file M-Print PRO PROJECT complete

Data

Dev. designation *

Assignment * ▾

Location * ▾

Filter attribute Weidmueller_No_Marker

Export objects without filter attribute ☒ Yes ☐ No

☒ Devices ☒ Blocks

☒ Connectors ☒ Mounting rails

☒ Cables ☒ Tubes

☒ Cable ducts ☒ Hoses

☒ Terminals

☐ Terminal strip name

☒ Terminal strip name:Terminal no.

☐ Terminal no.

☐ Shorten prefixes

☐ Data from opened sheets only

☐ Suppress duplicate labels

Export language <selected project languages> ▾

Properties

☒ Project name

☒ Component type

☒ Assignment

☒ Location

☒ Device designation


☒ Marker type

☒ Component name

Edit properties

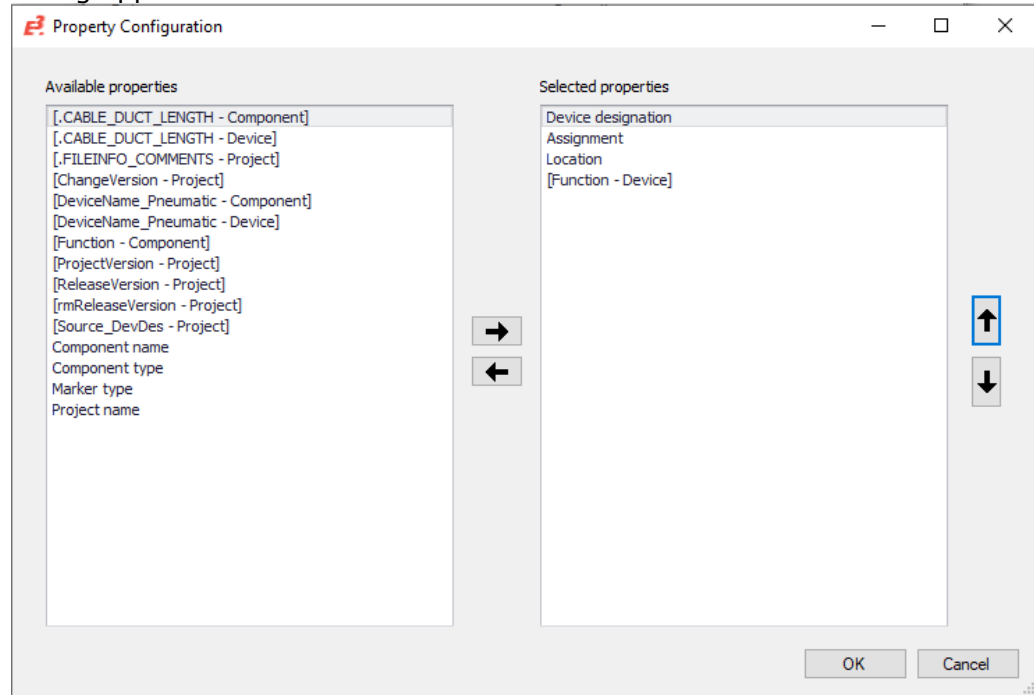
Label sheet preview Print label sheet Print to file Save as M-Print PRO Save as PROJECT complete

'Data' Tab				
Data				
Device designation	The data objects can be filtered by device designation, assignment, location and/or attribute. Note: When filtering, place an asterisk in front of the term to be searched for and then enter the search term letter-by-letter: *Search Term To reset the filter, enter only an asterisk * in the cell.			
Assignment				
Location				
Filter attribute	When filtering for an attribute, it is possible to determine whether devices that do not have the attribute should be considered or not. Note: The filter attribute must have a valid entry.			
Export objects without filter attribute	Note: This setting only refers to devices which do not have a filter attribute. If a filter attribute is used, the following restriction can be checked in the Export objects without filter attribute dialog: <ul style="list-style-type: none"><input type="radio"/> Yes Devices without defined filter attribute are exported to the label sheet.<input type="radio"/> No Devices without the defined filter attribute are not exported to the label sheet.			
Terminals	If the checkbox is activated, terminals are considered when creating labels. The following three output formats are available: <ul style="list-style-type: none">Terminal strip nameTerminal strip name: Terminal no.Terminal no.			
Terminal strip name	The terminal strip name is printed on the label for each terminal found. Example: <table><tr><td>-XT1</td><td>-XT1</td><td>-XT1</td></tr></table>	-XT1	-XT1	-XT1
-XT1	-XT1	-XT1		
Terminal strip name: Terminal no.	The terminal strip name and the terminal number are printed on the label for each terminal found. Example: <table><tr><td>-XT1 1</td><td>-XT1 2</td><td>-XT1 3</td></tr></table>	-XT1 1	-XT1 2	-XT1 3
-XT1 1	-XT1 2	-XT1 3		

Terminal no.	<p>The terminal number is printed on the label for each terminal found. The terminals are grouped according to the selected terminal strip name.</p> <p>Example:</p> 
Shorten prefixes	<p>If activated, the prefix (e.g. - = +) is not output.</p>
Data from opened sheets only	<p>If activated, only devices found on currently opened sheets are collected.</p>
Suppress duplicate labels	<p>If activated, labels with the same content are printed only once.</p>
Properties	
	<p>The <i>Properties</i> list displays all selected properties.</p> <p>The Edit properties button is used to add or remove properties and to change their order.</p> <p>If the property has an entry on the device that is checked, it is output on the label sheet.</p> <p>Example 1:</p> <div style="display: flex; align-items: flex-start;"> <div style="margin-right: 20px;"> <input checked="" type="checkbox"/> Assignment <input checked="" type="checkbox"/> Location <input checked="" type="checkbox"/> Device designation </div> <div style="border: 1px solid black; padding: 5px; text-align: center;"> =Dev +S01 -F1 </div> </div> <p>Example 2:</p> <div style="display: flex; align-items: flex-start;"> <div style="margin-right: 20px;"> <input checked="" type="checkbox"/> Device designation <input checked="" type="checkbox"/> Assignment <input type="checkbox"/> Location </div> <div style="border: 1px solid black; padding: 5px; text-align: center;"> -F1 =Dev </div> </div> <p>Example 3:</p> <div style="display: flex; align-items: flex-start;"> <div style="margin-right: 20px;"> <input checked="" type="checkbox"/> Project name <input checked="" type="checkbox"/> Component name <input checked="" type="checkbox"/> Device designation <input checked="" type="checkbox"/> Assignment </div> <div style="border: 1px solid black; padding: 5px; text-align: center;"> E3-Project 3RV20110EA15 -F1 =Dev </div> </div>

Edit properties


After clicking the **Edit properties** button, the **Property Configuration** dialog appears:



The desired properties can be configured here using the arrow buttons.


Available properties


All available properties are listed here.


Clicking this button  moves the selected property from the left side (Available properties) to the right side (Selected properties) of the dialog.

Note: Additional attributes are marked with square brackets, e.g. *[Function - Component]*

Selected properties

Clicking this button  moves the selected property one position higher in the list.

Clicking this button  moves the selected property one position lower in the list.

Clicking this button  returns the selected property to the left side (Available properties) of the dialog.

3.1.3 'Label sheet' Tab

E³.ETPrint (3.5.10.0) - C:\ProgramData\Zuken\E3.ETPrint\ETPrint.etc

File

Data Label sheet Additional label data Print to file M-Print PRO PROJECT complete

Measurement Units ☒ Millimetres ☐ Inches

Border

top 4,2

bottom 4,2

left 0

right 0

Label

width 70

height 32

hor. distance 0

vert. distance 0

Alignment

☐ left

☒ centered

☐ right

☒ Printer selection

☒ Adjust to label size

☒ Multiline print

Font

Arial

Font size

24 ☐ Bold

Start printing with:

Line 1

Column 1

Label sheet preview Print label sheet Print to file Save as M-Print PRO Save as PROJECT complete

'Label sheet' Tab

Measurement Units

The unit of measurement can be specified by using the **Millimetres** or **Inches** radio button.

Border

top/bottom/left/right

The label borders can be defined here.

Label

width/height	The size of the label can be defined here.																																							
distance hor. / ver.	The distances between labels can be defined in these input fields.																																							
Alignment																																								
left/centered/right	The alignment of the label text can be defined here.																																							
Definition of label parameters																																								
Printer selection	If checked, a printer can be selected before the print preview, otherwise the default printer is used.																																							
Adjust to label size	If checked, the texts to be printed on labels are adjusted to the label size.																																							
Multiline print	If checked, the label data is output one below the other, provided that several data lines have been selected there.																																							
Font	The font, in which the labels will be printed, can be set here.																																							
Font size	The font size for the labels can be defined here.																																							
Bold	If checked, the font is exported as bold.																																							
Start printing with: Line/Column	<div><div>“Start printing with” determines where the printout should start by entering a line and column. Example: Line=2, Column=2</div><table><tr><td></td><td></td><td></td></tr><tr><td></td><td>A1</td><td>A2.1</td></tr><tr><td></td><td>A1</td><td>A1</td></tr><tr><td></td><td>S1.MP</td><td>S1.MP</td></tr><tr><td>A2.2</td><td>A2.3</td><td>A5</td></tr><tr><td>A1</td><td>A1</td><td>A1</td></tr><tr><td>S1.MP</td><td>S1.MP</td><td>S1.MP</td></tr><tr><td>A6</td><td>A100</td><td>A100</td></tr><tr><td>A1</td><td>A1</td><td>A1</td></tr><tr><td>S1.MP</td><td>S1.G</td><td>S3.G</td></tr><tr><td>A101</td><td>A101</td><td>A102</td></tr><tr><td>A1</td><td>A1</td><td>A1</td></tr><tr><td>S1.G</td><td>S3.G</td><td>S1.G</td></tr></table></div>					A1	A2.1		A1	A1		S1.MP	S1.MP	A2.2	A2.3	A5	A1	A1	A1	S1.MP	S1.MP	S1.MP	A6	A100	A100	A1	A1	A1	S1.MP	S1.G	S3.G	A101	A101	A102	A1	A1	A1	S1.G	S3.G	S1.G
	A1	A2.1																																						
	A1	A1																																						
	S1.MP	S1.MP																																						
A2.2	A2.3	A5																																						
A1	A1	A1																																						
S1.MP	S1.MP	S1.MP																																						
A6	A100	A100																																						
A1	A1	A1																																						
S1.MP	S1.G	S3.G																																						
A101	A101	A102																																						
A1	A1	A1																																						
S1.G	S3.G	S1.G																																						

3.1.4 'Additional label data' Tab

E³.ETPrint (3.5.10.0) - C:\ProgramData\Zuken\E3.ETPrint\ETPrint.etc

File

Data Label sheet **Additional label data** Print to file M-Print PRO PROJECT complete

Additional label data

Text	Number
*	

Multiple printouts

☐ Regular Exp. Number 1

Text	Number
*	

Label sheet preview Print label sheet Print to file Save as M-Print PRO Save as PROJECT complete

'Additional label data' Tab

Additional label data

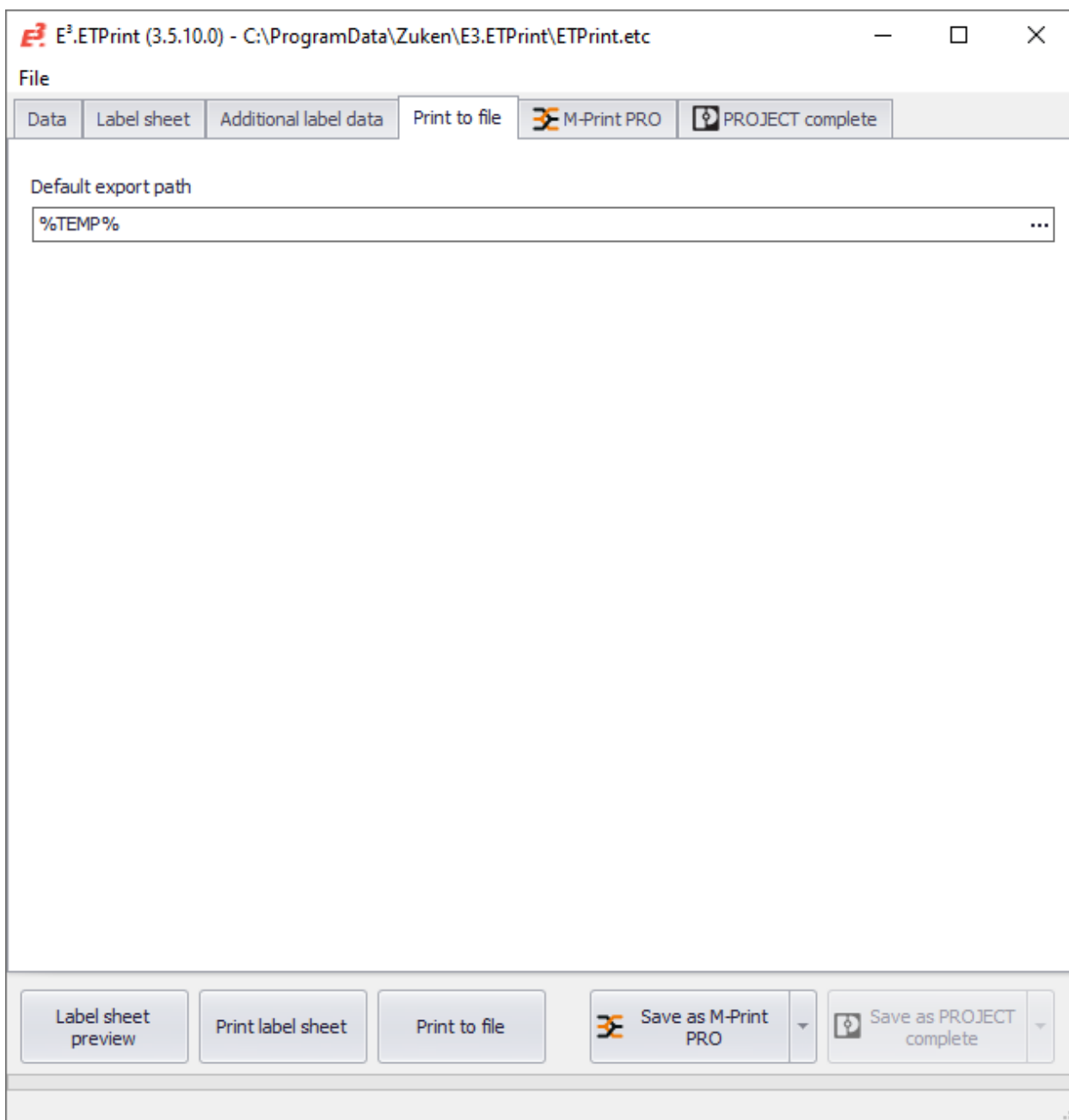
Text/Number

Allows user to enter any text that shall also be exported as labels (for multiline texts insert a line break with the # formatting character, e.g. "Line1#Line2").

Multiple printouts

Reg. Expression	Regular expressions can be used to set filters that are applied to the result data. This allows labels to be printed additionally based on a number or also to be excluded from printing.
Number	<p>Number defines the number of data objects to be printed.</p> <p>Example:</p> <ul style="list-style-type: none"> ▪ *W1*->0 All devices containing the text <i>W1</i> are suppressed. ▪ *XJ*->2 All devices containing the text <i>XJ</i> are additionally printed 2 times!

3.1.5 'Print to file' Tab



E3.ETPrint (3.5.10.0) - C:\ProgramData\Zuken\E3.ETPrint\ETPrint.etc

File

Data Label sheet Additional label data **Print to file** M-Print PRO PROJECT complete

Default export path

%TEMP% ...

Label sheet preview Print label sheet Print to file Save as M-Print PRO Save as PROJECT complete

'Print to file' Tab

Default export path

Defines a default export directory, in which the *PRN* file shall be saved (see "**Print to file**").

3.1.6 'M-Print PRO' Tab

E³.ETPrint (3.5.10.0) - C:\ProgramData\Zuken\E3.ETPrint\ETPrint.etc

File

Data Label sheet Additional label data Print to file **M-Print PRO** PROJECT complete

Marker

Marker type attribute
[Weidmueller_Marker_ArticleNumber - Component] ▼

Device default marker	Block default marker
1674760000	1112910000
Connector default marker	Mounting rail default marker
1609801044	1045640000
Cable default marker	Tube default marker
1860120000	1083230000
Cable duct default marker	Hose default marker
1877310000	1727740001
Terminal default marker	
1609801044	

M-Print PRO

Csv delimiter
,

Local M-Print PRO installation path
✖ C:\Program Files (x86)\weidmueller\mprintpro\bin\MF ...

☐ Direct print

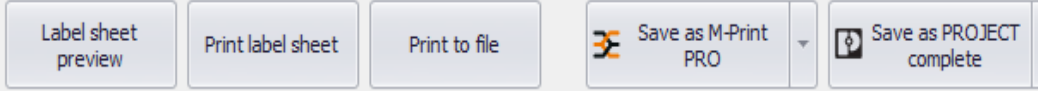
M-Print PRO import script
%ALLUSERSPROFILE%\Zuken\E3.ETPrint\ETPrint_M-Pri ...

Export M-Print PRO installation path
C:\Program Files (x86)\weidmueller\mprintpro\bin\MPrin ...

Default export path
%TEMP% ...

Label sheet preview Print label sheet Print to file Save as M-Print PRO Save as PROJECT complete

'M-Print PRO' Tab	
Marker	
Marker type attribute	Component and device attributes (owner: cable, connector, device, block, cable type, hose/tube) that can be used for the marker type are listed here. The attribute set here will be used for the marker type in the properties selection. (See 'Data' – Edit properties)
Device default marker	Default marker article number used when the "Marker type attribute" cannot be found on a device.
Block default marker	Default marker article number used when the "Marker type attribute" cannot be found on a block.
Connector default marker	Default marker article number used when the "Marker type attribute" cannot be found on a connector.
Mounting rail default marker	Default marker article number used when the "Marker type attribute" cannot be found on a mounting rail.
Cable default marker	Default marker article number used when the "Marker type attribute" cannot be found on a cable.
Tube default marker	Default marker article number used when the "Marker type attribute" cannot be found on a tube.
Cable duct default marker	Default marker article number used when the "Marker type attribute" cannot be found on a cable duct.
Hose default marker	Default marker article number used when the "Marker type attribute" cannot be found on a hose.
Terminal default marker	Default marker article number used when the "Marker type attribute" cannot be found on a terminal.
M-Print Pro	
Csv delimiter	Delimiter of the CSV file for the M-Print Pro Export file.
M-Print PRO import script	Path to the M-Print Pro Import script. Additional information can be found in the M-Print PRO Documentation.
Default export path	Default export directory for the M-Print PRO CSV file.

Local M-Print PRO installation path	Defines the path to the local M-Print Pro EXE. It is used for “ Export and open in M-Print PRO ” and filled automatically from the registry upon first starting.
Direct print	<p>Defines whether the finished label sheets shall be printed directly in M-Print PRO.</p> <p>If ‘Direct print’ is active, the label sheets can be printed directly in M-Print PRO. In doing so, the ‘Save as M-Print PRO’ button is grayed-out:</p>  <p>If ‘Direct print’ is not activated, the label sheets can be opened directly in M-Print PRO.</p> <p>(See 4.2.5)</p>
Export M-Print PRO installation path	Defines the path to the M-Print Pro EXE on a computer on which the export file is to be opened. It is used for “ Export in M-Print PRO ” and filled automatically from the registry upon first starting.

3.1.7 'PROJECT complete' Tab

E3.ETPrint (3.5.10.0) - C:\ProgramData\Zuken\E3.ETPrint\ETPrint.etc — □ ×

File

Data Label sheet Additional label data Print to file M-Print PRO **PROJECT complete**

Export configurations

E3.series export group	PROJECT complete import configuration
*	

PROJECT complete

Local export path ...

Local installation path ...

Local import configuration path ...

Save as M-Print PRO
 Save as PROJECT complete

'PROJECT complete' Tab	
Export configurations	
E3.series export group	The following export groups are available after installation: Device, Terminal, Wire/Core and Control
PROJECT complete import configuration	Configuration files are available in the drop-down list, which are generated during the installation of PROJECT complete (e.g. E3.E3-Equipment Marking). Note: The available configurations are provided by PROJECT complete and can be created and edited there.
PROJECT complete	
Local export path	The local output directory must be defined after installation. The CSV files are written to this directory.
Local installation path	The installation path of PROJECT complete marking is determined dynamically at runtime.
Local import configuration path	<p>The local import configuration directory must be defined after installation. The directory for the configuration files of E3.ETPrint is C:\Users\Public\Documents\PROJECT complete\marking\Special settings\ZUKEN by default.</p> <p>This directory contains the import configurations.</p>

3.2 Main Menu

3.2.1 Main Menu 'File'

The following commands are available in the main menu under **File**:

Main Menu 'File'	
Open configuration	The setting values used can be saved as a configuration (see 4.2.1 Open/Save configuration).
Save configuration	
Close	Closes E³.ETPrint .

4 Functional Description

4.1 Open/Close

4.1.1 Open **E3.ETPrint**

NOTE:




A project must be open in **E3.series**.

After successfully installing, **E3.ETPrint** can be opened by confirming the file **E3.ETPrint.exe**.

4.1.2 Close **E3.ETPrint**

To close **E3.ETPrint**,

- Click the **Close** button in the upper right-hand corner of the window: 
- or
- Click **File** -> **Exit** in the main menu

4.2 Operation

4.2.1 Open/Save Configuration

The currently used configuration is saved automatically when printing.
When starting **E3.ETPrint**, the default configuration file under
`%AppData%\Zuken\E3.ETPrint\ETPrint.etc` is always used.

NOTE:



The program can also be opened with the start parameter "-ConfigFile" for network installations. The path to the file must be given:
`E3.ETPrint.exe -ConfigFile <Path of configfile>`

If the file is read-only, it is not saved.

Additional configurations can be optionally saved/loaded.

How to save a configuration:

- Make sure that all set options/values in the tabs are set correctly
- Click **File** -> **Save configuration...** in the main menu
- Enter the desired file name and storage location for the configuration file in the **Save as** dialog

How to open a configuration:

- Click **File -> Open Configuration...** in the main menu
- Select the desired configuration file in the **Open** dialog

TIP:



The file path of the currently used configuration file appears in the upper part of the dialog:

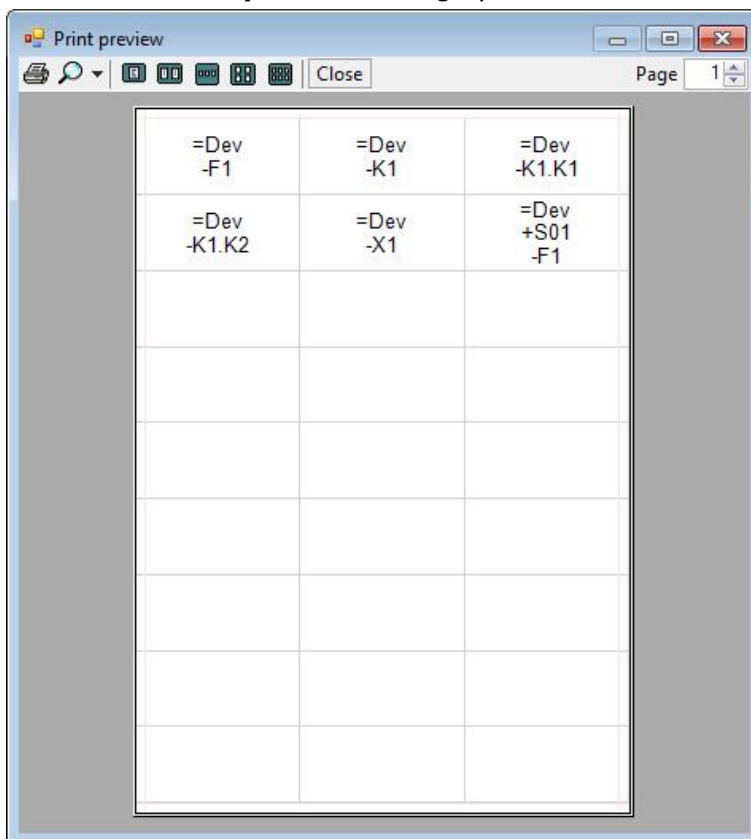







4.2.2 Label Sheet Preview

The finished label sheet can be displayed in a print preview window before printing. It is used to check whether the required setting values are correct or not.

How to open the label sheet preview:

- Click the **Label sheet preview** button
- The **Print preview** dialog opens:



Print preview	
	Prints the label sheet using the predefined printer.
	Defines the zoom level.
	The sheet division can be defined via the buttons: <ul style="list-style-type: none">▪ Full sheet▪ Two sheets▪ Three sheets▪ Four sheets▪ Six sheets
	Closes the print preview window.
	Used to navigate to the desired sheet.

4.2.3 Print Label Sheet

The finished label sheet can also be printed directly.

TIP:



If the **Printer selection** check box is activated in the **Label sheet** tab, a printer can be selected. If deactivated, the default printer is used.

To print label sheets:

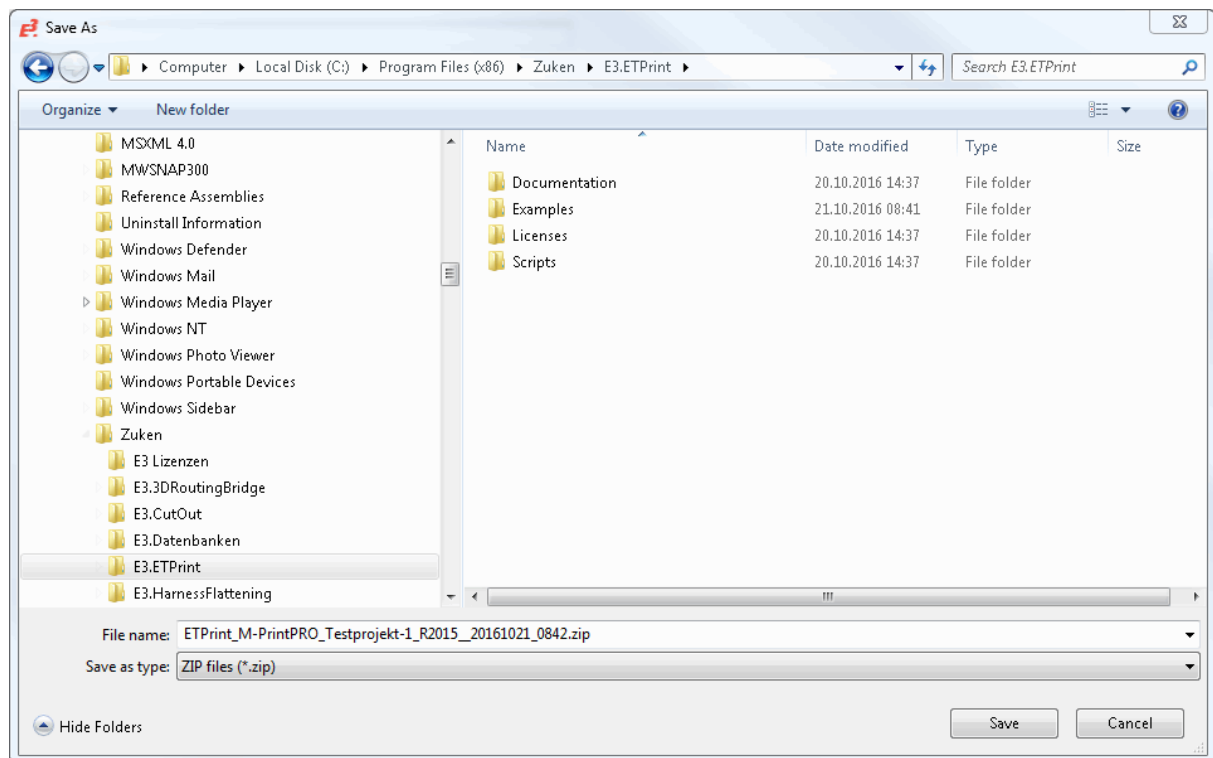
- Click the **Print label sheet** button
- The **Print** dialog opens

4.2.4 Export to M-Print PRO

The finished label sheet can be exported as a CSV file. This CSV file can then be imported with the program **M-Print PRO**.

To export label sheets as a *container*:

- Click the **Save as M-Print PRO** button
Note: The check box '**Print direct**' must be deactivated in the **M-Print PRO** tab.
- The **Save as** dialog opens:



- → A 'container' (zip file) with a CSV file and control files is generated in the predefined default directory.
- Unzip the 'container' (zip file) on the desired computer
- Run the unzipped batch file.

4.2.5 Export and Open in M-Print-PRO or Export and Print in M-Print PRO

The finished label sheets can be opened or printed M-Print PRO.

To export label sheets and open them in M-Print PRO:

- Deactivate the check box '**Print direct**' in the **M-Print PRO** tab
- Click the **Export/open in M-Print PRO** button under **Save as M-Print PRO**
- The export data is opened directly in **M-Print PRO**

To export label sheets and print them in M-Print PRO:

Note: For this functionality to work, you must have an M-Print PRO driver installed on your computer!

- Activate the check box '**Print direct**' in the **M-Print PRO** tab

- Click the **Export/open in M-Print PRO** button
- The export data is printed directly in **M-Print PRO**
- **Note:** After printing, **M-Print PRO** closes.

4.2.6 Print to file

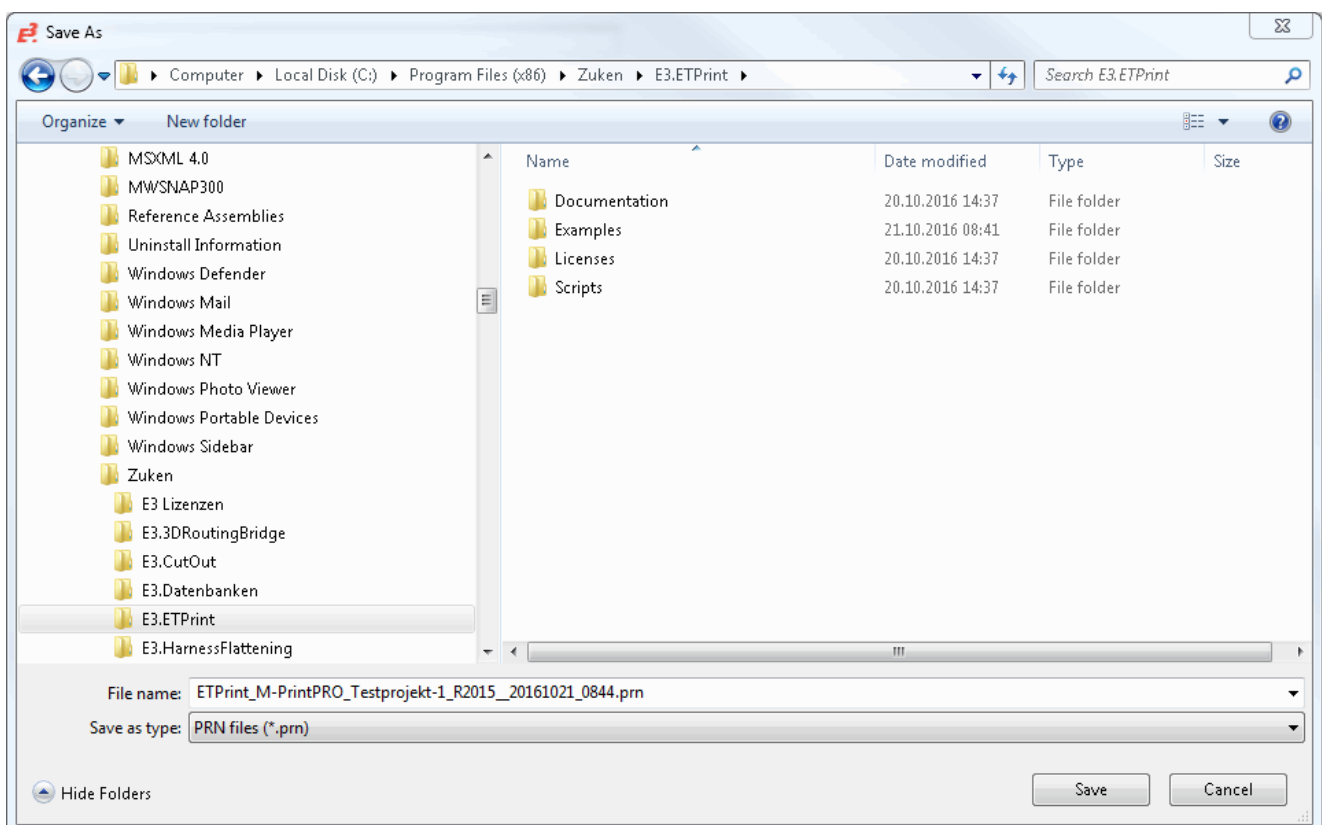
It is possible to export the label sheets as a *PRN* file in ASCII format. The font and label size settings are omitted as they cannot be analyzed in the *PRN* file. When exporting multiline texts, the texts are exported separated by a space character. In general, one line per label is written at *PRN* export.

If the placeholder **\$p** is used as the file name, it is replaced by the project name when creating the file.

To print label sheets as a *PRN* file:

- Click the **Print to file** button
- The **Save as** dialog opens:

A default export directory can be defined here, in which the *PRN* file is saved (see "**Print to file**").



4.2.7 Save as PROJECT complete

The finished label sheet can be exported as a CSV file. One CSV file is exported per **E³.series** export group. These CSV files can then be read in with the program **PROJECT complete**.

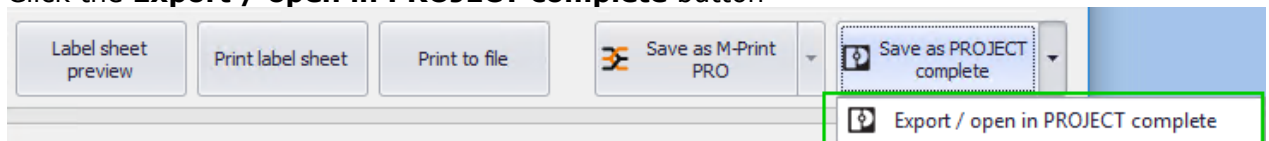
To export the CSV files:

- Click the **Save in PROJECT complete** button
- The CSV files are exported to the output directory, which is defined under **Local export path** (see [Chapter 3.1.7 'PROJECT complete' Tab](#))

4.2.8 Export / open in PROJECT complete

The finished label sheet can be opened in **PROJECT complete**. To export the label sheets to PROJECT complete:

- Click the **Export / open in PROJECT complete** button



- The export data is opened directly in **PROJECT complete**.
- **Note:** The program **PROJECT complete marking** must already be installed.



Americas

North America

Zuken USA Inc.
Westford, MA 01886, USA
Tel: +1 978 692 4900

Asia

Japan

Zuken (Worldwide Head Office)
Yokohama, Kanagawa 224-8585, Japan
Tel: +81 45 942 1511

China

Zuken (Shanghai) Technical Center Co.,
Ltd.
Room 301, No.555 Nanjing West Road,
Shanghai, 200041, People's Republic of
China
Tel: +86-21-3218-1784

Korea

Zuken Korea Inc.
Seoul 135-283, Korea
Tel: +82 2 5648031

Singapore

Zuken Singapore Pte Ltd.
#22-05 Gateway East, Singapore 189721
Tel: +65 6392 5855

Taiwan

Zuken Taiwan Inc.
Taipei 110, Taiwan
Tel: +886 2 7718 1116



Europe

Germany

Zuken GmbH (European HQ)
D-85399 Hallbergmoos, Germany
Tel: +49 89 7104059 00

Zuken E3 GmbH
D-89079 Ulm, Germany
Tel: +49 7305 9309 0

Zuken E3 GmbH
D-30659 Hannover, Germany
Tel: +49 511 8595 9489

Switzerland

Zuken E3 GmbH
CH-5504 Othmarsingen, Switzerland
Tel: +41 62 561 08 00

United Kingdom

Zuken UK Ltd.
Bristol, BS32 4RF, UK
Tel: +44 1454 207 801

France

Zuken S.A.
#91974 Les Ulis Cédex, France
Tel: +33 1 69 29 48 00

Italy

Zuken S.r.l.
20090 Milanofiori Assago, Milan, Italy
Tel: +39 02 575 921

Netherlands

Zuken GmbH
NL-6075 HA Herkenbosch, The Netherlands
Tel: +31 475 520 998