



***E³*.ETPrint**

Label Print



Consultas técnicas

Por favor pregunte por la persona de contacto responsable en nuestro departamento de soporte.

E-mail: e3-support@zuken.com

Nota:

Zuken no es responsable de cualesquiera errores que puedan aparecer en esta documentación. La responsabilidad debida a pérdidas directa o indirectamente resultante del envío o utilización de esta documentación, está excluída de la permitida por ley. Esta documentación contiene información de copyright.

Todos los derechos están reservados, especialmente aquellos relativos a la duplicación y la distribución, así como la traducción. Esta documentación no puede ser reproducida ni total ni parcialmente (fotocopia, microfilm, etc.) o procesada, duplicada o distribuída utilizando sistemas electrónicos sin el consentimiento previo y por escrito de Zuken.

Contacto

Zuken E3 GmbH
Lämmerweg 55
D-89079 Ulm/Einsingen

Teléfono : +49 7305 9309-0
Fax: +49 7305 9309-99
Web: <http://www.zuken.com>
E-mail: e3-info@zuken.com

Índice

1	Introducción	2
1.1	Descripción del Producto	2
1.2	Work Flow	2
1.3	Prerequisitos del Sistema	3
2	Instalación.....	4
2.1	Instalación del Programa.....	4
2.2	Configuración	7
2.2.1	Crear atributos.....	7
2.2.2	Integrate Tools Menu	8
3	User Interface.....	9
3.1	Tabs.....	9
3.1.1	Button Elements in all tabs	9
3.1.2	Tab 'Data'.....	10
3.1.3	Tab 'Label sheet'	14
3.1.4	Tab 'Additional label data'.....	16
3.1.5	Tab 'Print to file'	17
3.1.6	Tab 'M-Print PRO'	18
3.2	Main Menu	20
3.2.1	Main Menu 'Data'.....	20
4	Functional Description	21
4.1	Open/Close	21
4.1.1	Open E ³ .ETPrint:	21
4.1.2	Close E ³ .ETPrint:	21
4.2	Use	21
4.2.1	Open/Save configuration	21
4.2.2	Label sheet preview	22
4.2.3	Print label sheet	23
4.2.4	Export to M-Print PRO	24
4.2.5	Export and open in M-Print-PRO	24
4.2.6	Print to file	24

1 Introducción

1.1 Descripción del Producto

E³.ETPrint enables to create device labels from a **E³.series** project. By using a filter- and selection mechanism it can be defined which devices shall or shall not appear in the label output.

The filter can be used for *device designations, assignment, location* and other selected *filter attributes*.

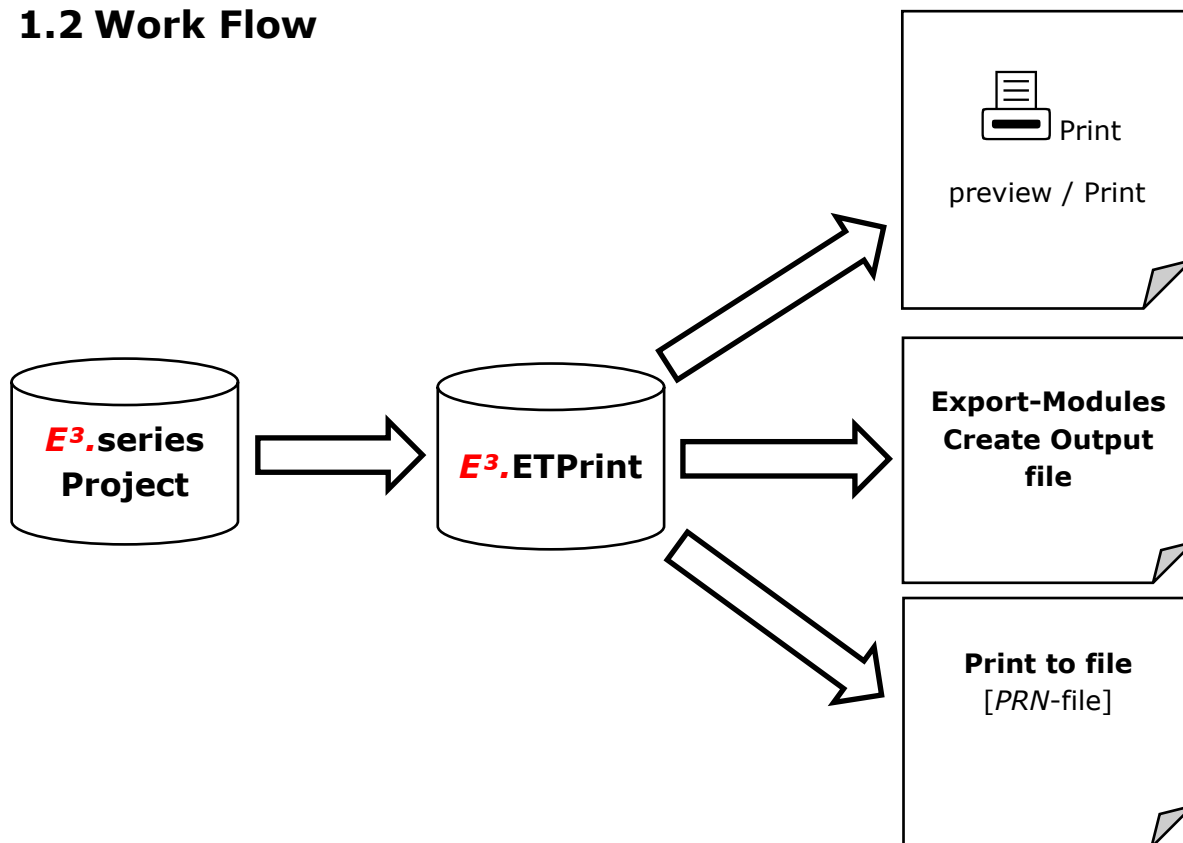
The following devices can be defined by selection:

- ,general' devices
- connectors
- cables
- cable ducts
- blocks
- mounting rails
- tubes
- hoses
- terminals

Labels are available in following formats:

- Print preview / Print
- M-Print PRO (open directly in M-Print PRO / or as CSV-file)
- Print to file (as *PRN*-file)

1.2 Work Flow



1.3 Prerequisitos del Sistema

PREREQUISITOS DEL SISTEMA



Sistemas Operativos

1. Windows 7
2. Windows 8(.1)
3. Windows 10

Prerequisitos Mínimos del Sistema

4. CPU de 2 GHz o superior
5. Como mínimo 4 GB de memoria RAM o más
6. Al menos 10 GB de espacio libre en el disco duro (para la instalación normal)

Prerequisitos de Software

7. **E³.series**
8. **.NET Framework 4.6.2**

Prerequisitos de Hardware

9. Ratón de 3 botones con rueda scroll
10. Lector de DVD-ROM (para la instalación)
11. **Recomendado:** monitor de 19" con al menos 1280*1024 con color verdadero o monitor panorámico; alternatively solución de doble monitor.

2 Instalación

NOTE



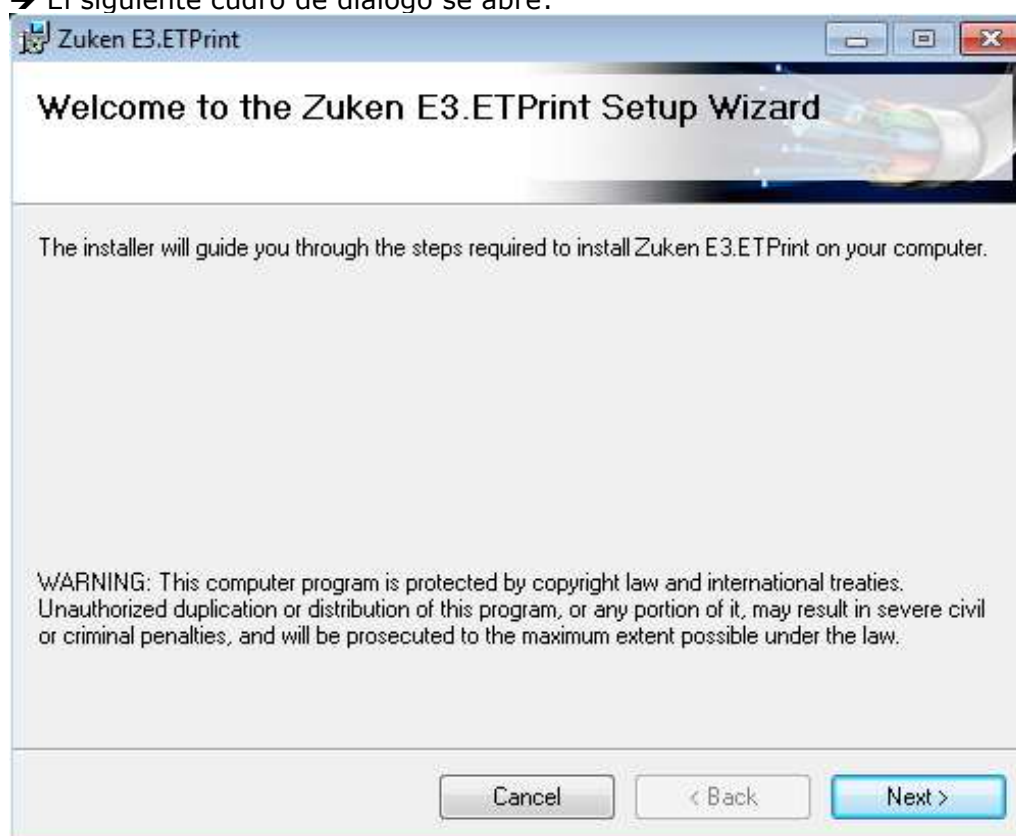
- Antes de instalar, asegúrese de que los requisitos del Sistema para este producto han sido cumplidos (ver 1.2 Requisitos del Sistema)
- Antes de comenzar el proceso de instalación, todas las aplicaciones de **E3.series** deben ser cerradas.

2.1 Instalación del Programa

Para instalar el programa **E3.ETPrint** en su computadora:

1. Click derecho en el archivo **E3.ETPrint.msi** o **setup.exe** y ejecutar la aplicación como Administrador.

→ El siguiente cuadro de diálogo se abre:



Click en **Siguiente>**

→ El siguiente cuadro de diálogo se abre:



Bajo **Carpeta**: introducir manualmente la ruta de instalación para el **E3.ETPrint** o click en el botón **Examinar...** para seleccionar la ruta de instalación para **E3.ETPrint** utilizando el Explorador.

Nota: La ruta de instalación no debe ser la misma ruta como la ruta de instalación para **E3.series**. Haciendo click en el botón **Requerimiento en Disco...** se muestra la información sobre la memoria necesaria disponible y requerida.

Usando los botones de radio, se puede especificar si el programa debe ser utilizado por todos los usuarios (**Todos**) o solo por usted (**Solo yo**).

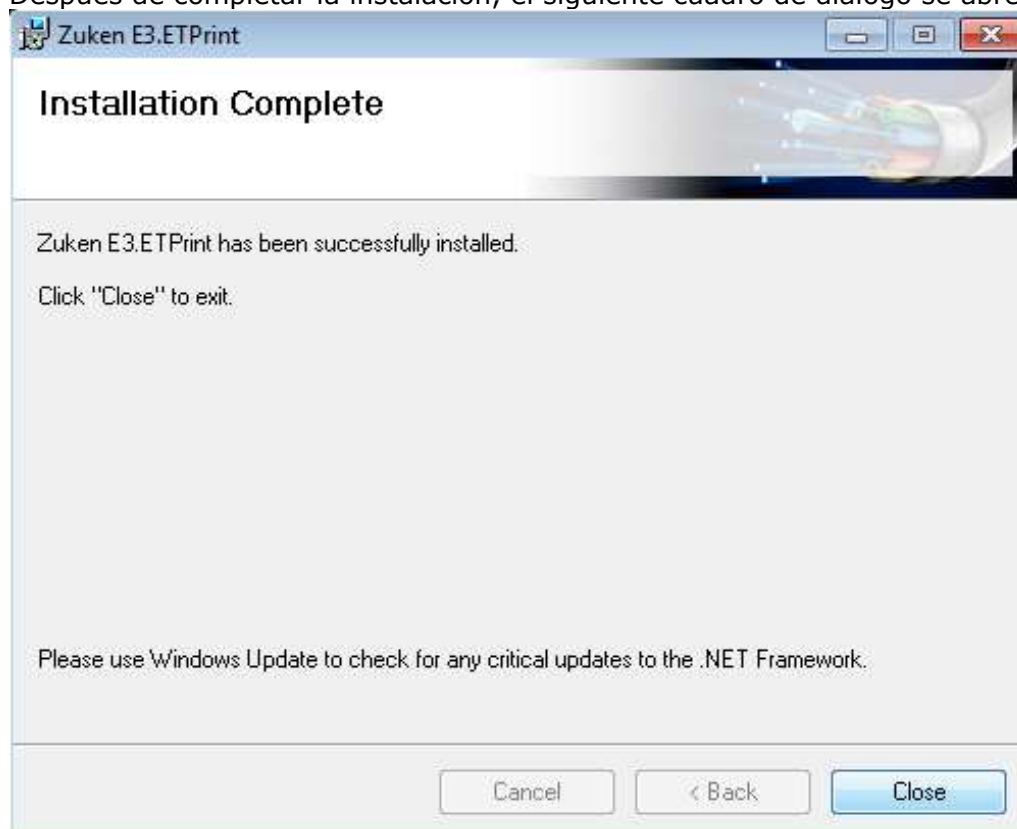
3. Click en **Siguiente>**

El siguiente cuadro de diálogo se abre:



4. → La instalación es realizada.

Después de completar la instalación, el siguiente cuadro de diálogo se abre:



2.2 Configuración

Se debe ejecutar las siguientes configuraciones después de instalar la programa.

2.2.1 Crear atributos

Primer, se debe crear en **E3.series** los atributos especiales requeridos por **E3.ETPrint**. Los atributos para crear se definen en el archive „AddAttributes.ini”.

Los siguientes atributos se crean por defecto:

Atributo	Propietario
Weidmueller_Marker_ArticleNumber	Manguera, Componente, Conector, Dispositivo, Dispositivo de bloque, Tipo de manguera, Manguito/Tubo, Tipo manguito/Tipo tubo
Weidmueller_No_Marker	Manguera, Componente, Conector, Dispositivo, Dispositivo de bloque, Tipos de manguera, Manguito/Tubo, Tipo manguito/Tipo tubo

Como crear los atributos requeridos:

Nota: Pay attention that one **E3.series** application at the maximum is executed.

- Double-click on the script „AddAttributes.vbs” under ...\\E3.ETPrint\\Scripts
- The script is executed and **E3.series** is closed automatically
- The attributes are saved in the configuration database set in **E3.series**.
- After successful setup the attribute name list within the **E3.series** database editor shall contain the newly created attributes of **E3.ETPrint**:

Edit Attribute Names									
Name	Display name	Type	Owner	Single in	Unique	Format	Size	P	Color
Weidmueller_Marker_ArticleNumber	Weidmueller_Marker_ArticleNumber	Integer	Cable, Compon	<input checked="" type="checkbox"/>	<no enti	value	2.5 mm	0	Automatic
Weidmueller_No_Marker	Weidmueller_No_Marker	Integer	Cable, Component, Connector, Device, Block device, Cable type, Hose/Tube, Hose/Tube type						
Weight	Weight	String	Cable, Cable co	<input checked="" type="checkbox"/>	Object	value	2.5 mm	0	Automatic

Both scripts must be opened with the 32 Bit Version of the „wscript.exe” in 64 Bit operating systems. The 32 Bit Version of the „wscript.exe” is available in the Windows-folder under „SysWOW64\\wscript”.

Example: C:\\WINDOWS\\SysWOW64\\wscript.exe "C:\\Program Files (x86)\\Zuken\\E3.ETPrint\\Scripts\\AddAttributes.vbs"

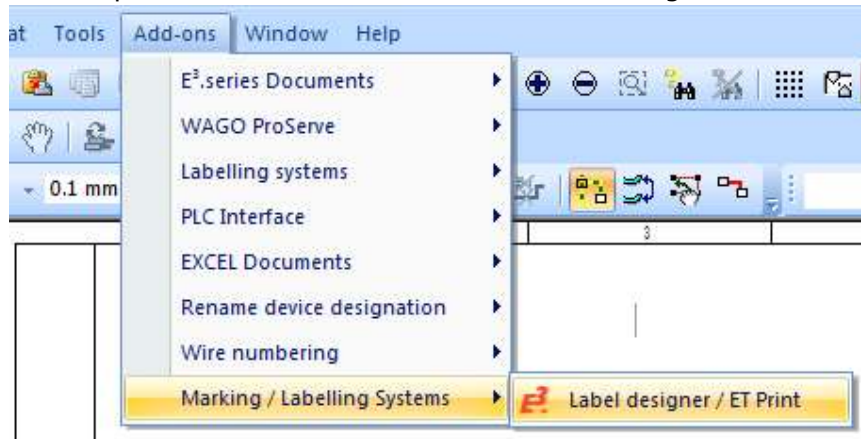
2.2.2 Integrate Tools Menu

Special tools menu entries can be integrated within the **Tools** in **E3.series**.

How to integrate the Tools Menu in E3:

Note: Pay attention that one **E3.series** application at the maximum is executed.

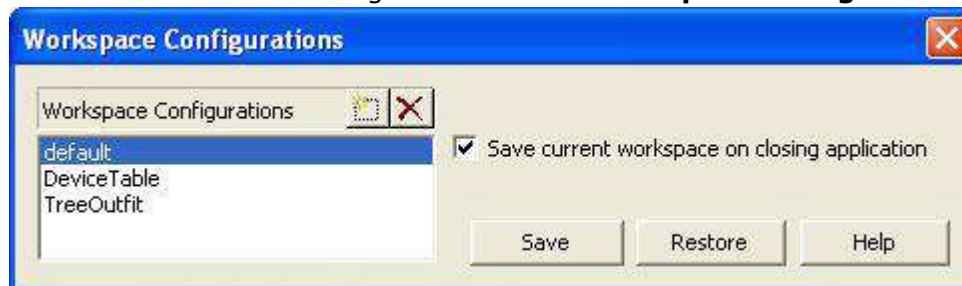
- Double-click on the script „BuildToolsMenu.vbs“ under ...\\E3.ETPrint\\Scripts
- The script is executed and the Tools Menu is integrated in **E3.series**:



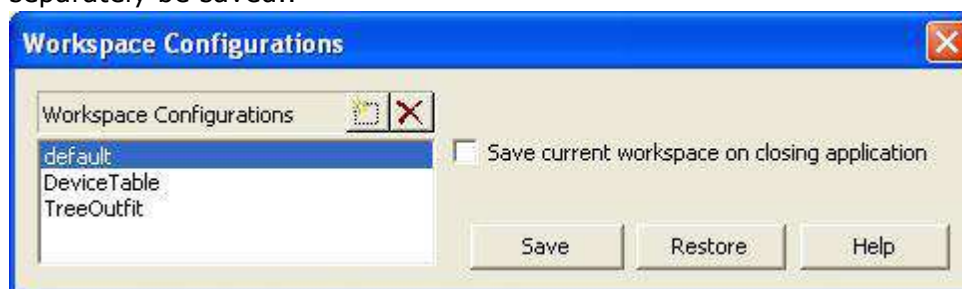
For user-defined changes to the Add-ons menu, the next chapter contains important information.

After embedding, the user should check whether the settings are automatically saved when exiting **E3.series**.

This can be controlled using the “**View -> Workspace Configuration**” command.



When the checkbox is NOT activated (default setting) the current configuration must separately be saved..



3 User Interface

The **E3.ETPrint** user interface is a separate dialogue split in five tabs. The options and buttons of a tab are split in areas limited by a frame. The used setting values can be save das configuration (See 4.2.1 Open/Save configuration).

3.1 Tabs

The **E3.ETPrint** user interface is split in following tabs:

- **Data**
- **Label sheet**
- **Additional label data**
- **Print to file**
- **M-Print Pro**

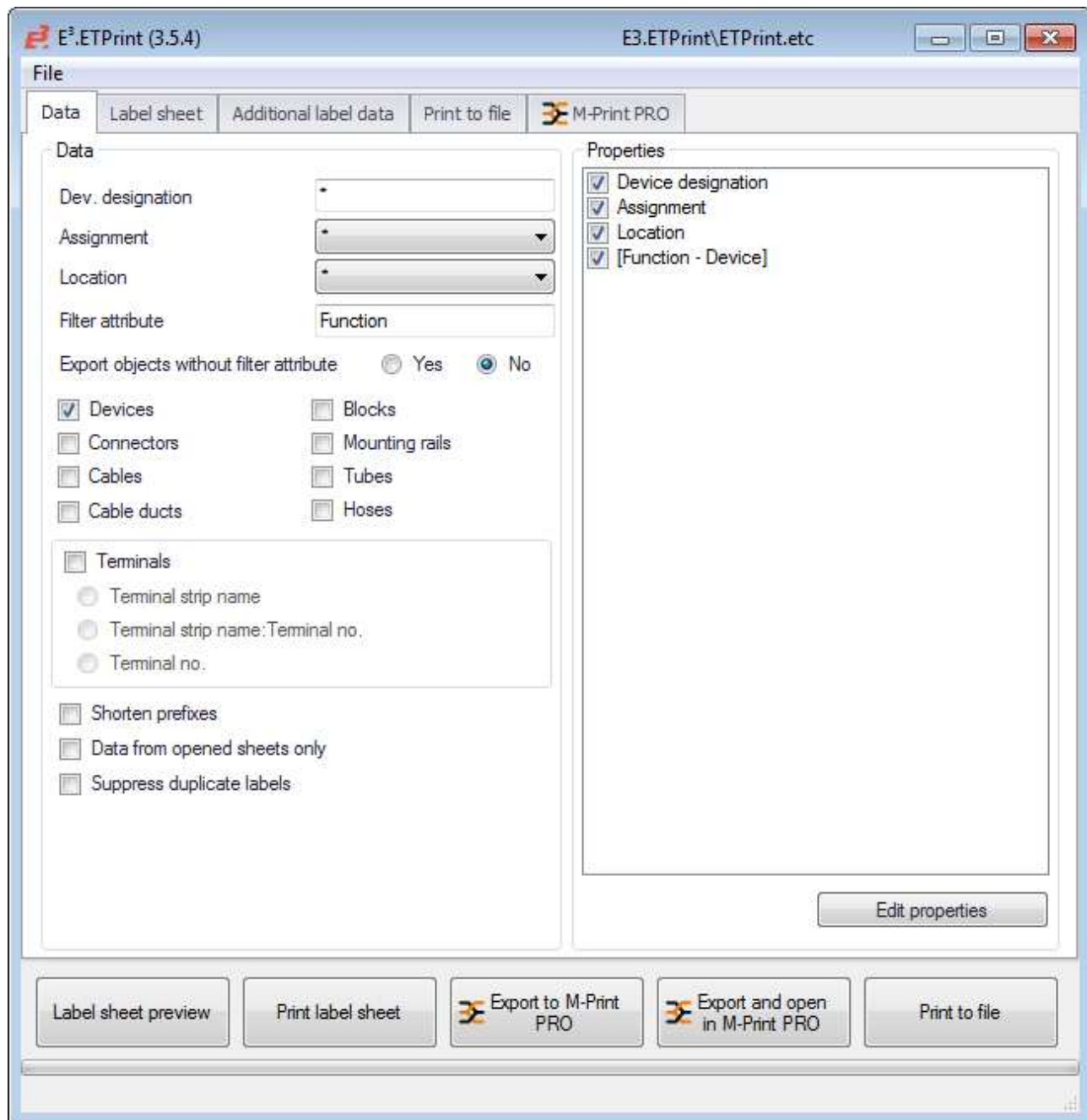
3.1.1 Button Elements in all tabs

The following button elements are available in all tabs as a special feature:



Label sheet preview	Displays the print preview of label sheet
Print label sheet	When the option Printer selection in the tab Label sheet is selected, the default printer selection dialogue appears after clicking the button Print. After having defined the printer, the print preview is opened.
Export to M-Print Pro	Creates a ‚Container‘ (zip-file) in the predefined default directory with a CSV file and control files. This container can be opened in another computer. (See under 4.2.4 Export to M-Print PRO)
Export and open in M-Print Pro	Exports the CSV-file to the defined default directory. It will not be asked for the file name. M-Print Pro will be opened automatically.
Print to file	The output is exported to a <i>PRN</i> -file in ASCII-format. Further inforamtion under 4.2.6 Print to file.

3.1.2 Tab 'Data'



E3.ETPrint (3.5.4) E3.ETPrint\ETPrint.etc

File

Data Label sheet Additional label data Print to file M-Print PRO

Data

Dev. designation *

Assignment *

Location *

Filter attribute Function

Export objects without filter attribute ☐ Yes ☒ No

☒ Devices ☐ Blocks

☐ Connectors ☐ Mounting rails

☐ Cables ☐ Tubes

☐ Cable ducts ☐ Hoses

☐ Terminals

☐ Terminal strip name

☐ Terminal strip name:Terminal no.

☐ Terminal no.

☐ Shorten prefixes

☐ Data from opened sheets only

☐ Suppress duplicate labels

Properties

☒ Device designation

☒ Assignment


☒ Location

☒ [Function - Device]

Edit properties

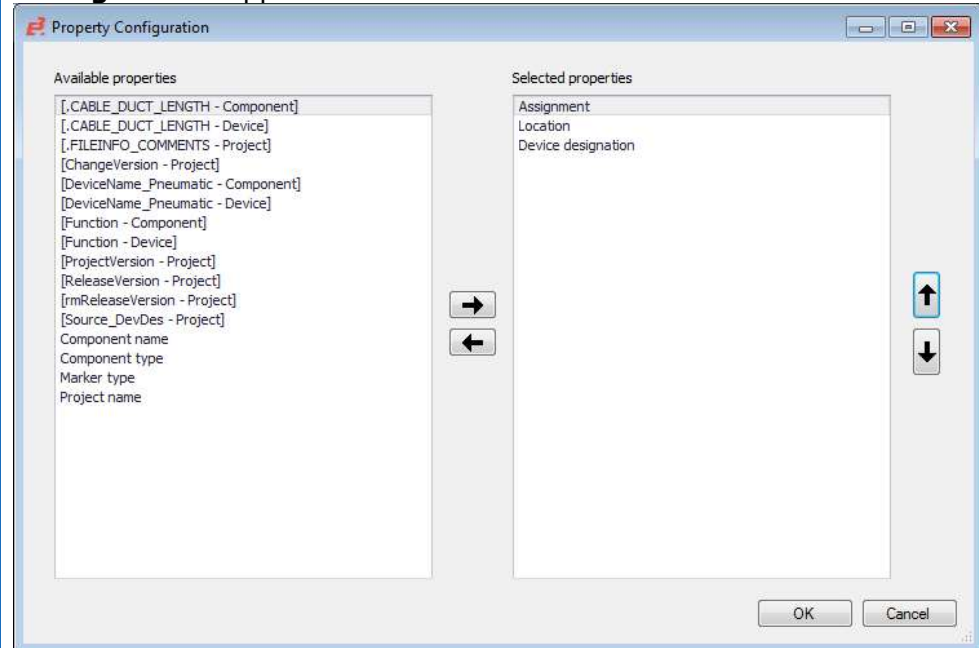
Label sheet preview Print label sheet Export to M-Print PRO Export and open in M-Print PRO Print to file

Tab 'Data'				
Data				
Device designation	The data objects can be filtered by device designation, assignment, location and/or attribute. Note: Place an asterisk before the query term and enter the term letter-by-letter: *Query Term For filter reset insert only one asterisk: *			
Assignment				
Location				
Filter attribute	It can be defined at attribute filter whether devices which do not own the attribute shall be considered or not. Note: The filter attribute must have a valid entry.			
Export objects without filter attribute	Note: This setting refers only to devices which don't have a filter attribute. If a filter attribute is used, the following can be checked in the dialogue Export objects without filter attribute: <ul style="list-style-type: none"><input checked="" type="radio"/> Yes Devices without defined filter attribute are exported to the label sheet<input type="radio"/> No Devices without the defined filter attribute are not exported to the label sheet.			
Terminals	When the checkbox is active, terminals are considered for the label creation. The following three output formats are available: <ul style="list-style-type: none">Terminal strip nameTerminal strip name: Terminal no.Terminal no.			
Terminal strip name	The terminal strip name is given on the label for each terminal found. Example: <table><tr><td>-XT1</td><td>-XT1</td><td>-XT1</td></tr></table>	-XT1	-XT1	-XT1
-XT1	-XT1	-XT1		
Terminal strip name: Terminal no.	The terminal strip name and the terminal number are given on the label for each terminal found. Example: <table><tr><td>-XT1 1</td><td>-XT1 2</td><td>-XT1 3</td></tr></table>	-XT1 1	-XT1 2	-XT1 3
-XT1 1	-XT1 2	-XT1 3		

Terminal no.	<p>The terminal number is given on the label for each terminal found. Grouping of terminals is made by the selected terminal strip name.</p> <p>Example:</p> 
Shorten prefixes	With active checkbox, the prefix (e.g. - = +) is ceased at output.
Data from opened sheets only	With active checkbox, only devices found in currently opened sheets are collected.
Suppress duplicate labels	With active checkbox, labels with identic content are printed only once.
Properties	
	<p>The list Properties displays all selected properties.</p> <p>The button Edit properties helps to add/delete properties and to change the order.</p> <p>When the property owns an entry on the device and is checked, it will be exported for the label sheet.</p> <p>Example 1:</p> <div style="display: flex; align-items: flex-start;"> <div style="margin-right: 20px;"> <input checked="" type="checkbox"/> Assignment <input checked="" type="checkbox"/> Location <input checked="" type="checkbox"/> Device designation </div> <div style="border: 1px solid #ccc; padding: 5px; text-align: center;"> =Dev +S01 -F1 </div> </div> <p>Example 2:</p> <div style="display: flex; align-items: flex-start;"> <div style="margin-right: 20px;"> <input checked="" type="checkbox"/> Device designation <input checked="" type="checkbox"/> Assignment <input type="checkbox"/> Location </div> <div style="border: 1px solid #ccc; padding: 5px; text-align: center;"> -F1 =Dev </div> </div> <p>Example 3:</p> <div style="display: flex; align-items: flex-start;"> <div style="margin-right: 20px;"> <input checked="" type="checkbox"/> Project name <input checked="" type="checkbox"/> Component name <input checked="" type="checkbox"/> Device designation <input checked="" type="checkbox"/> Assignment </div> <div style="border: 1px solid #ccc; padding: 5px; text-align: center;"> E3-Project 3RV20110EA15 -F1 =Dev </div> </div>

Edit properties


After clicking the button **Edit properties**, the dialogue **Property Configuration** appears:



Here, the desired properties can be configured by using the arrow buttons.


Available properties


All available properties are listed here.


By clicking the button , the selected property will be used and moved from the list to the table with the selected properties.

Note: Additional attributes are marked with brackets, e.g. *[Function - Component]*

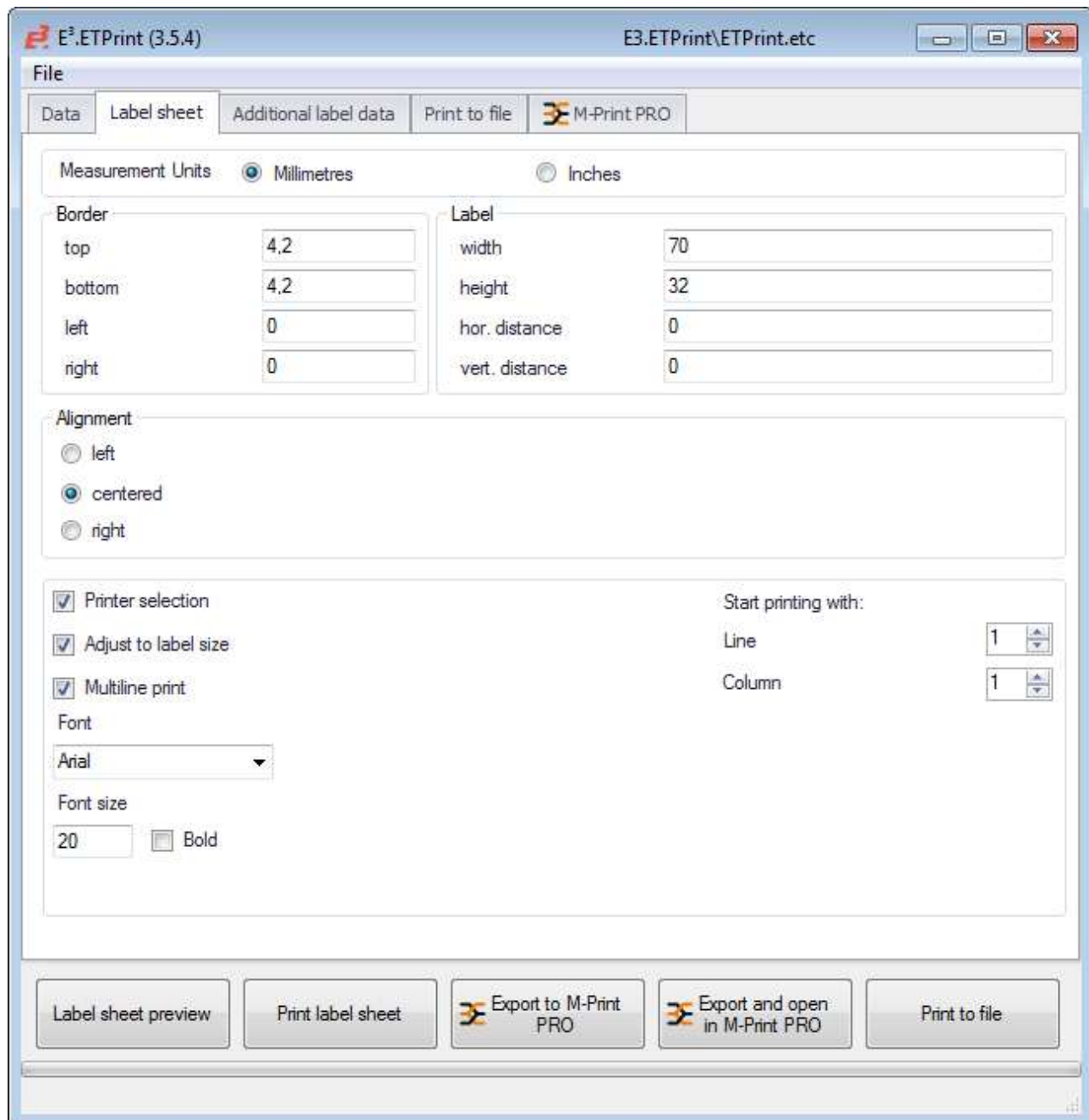
Selected properties

By clicking the button , the selected property is moved to one forward position in the order.

By clicking the button , the selected property is moved to one backward position in the order.

By clicking the button , the selected property is deleted in the table with the selected properties and moved again to the list 'Available Properties'.

3.1.3 Tab 'Label sheet'



Tab 'Label sheet'

Measurement Units


The measurement units can be defined by using the options **Millimetres** or **Inches**.

Border

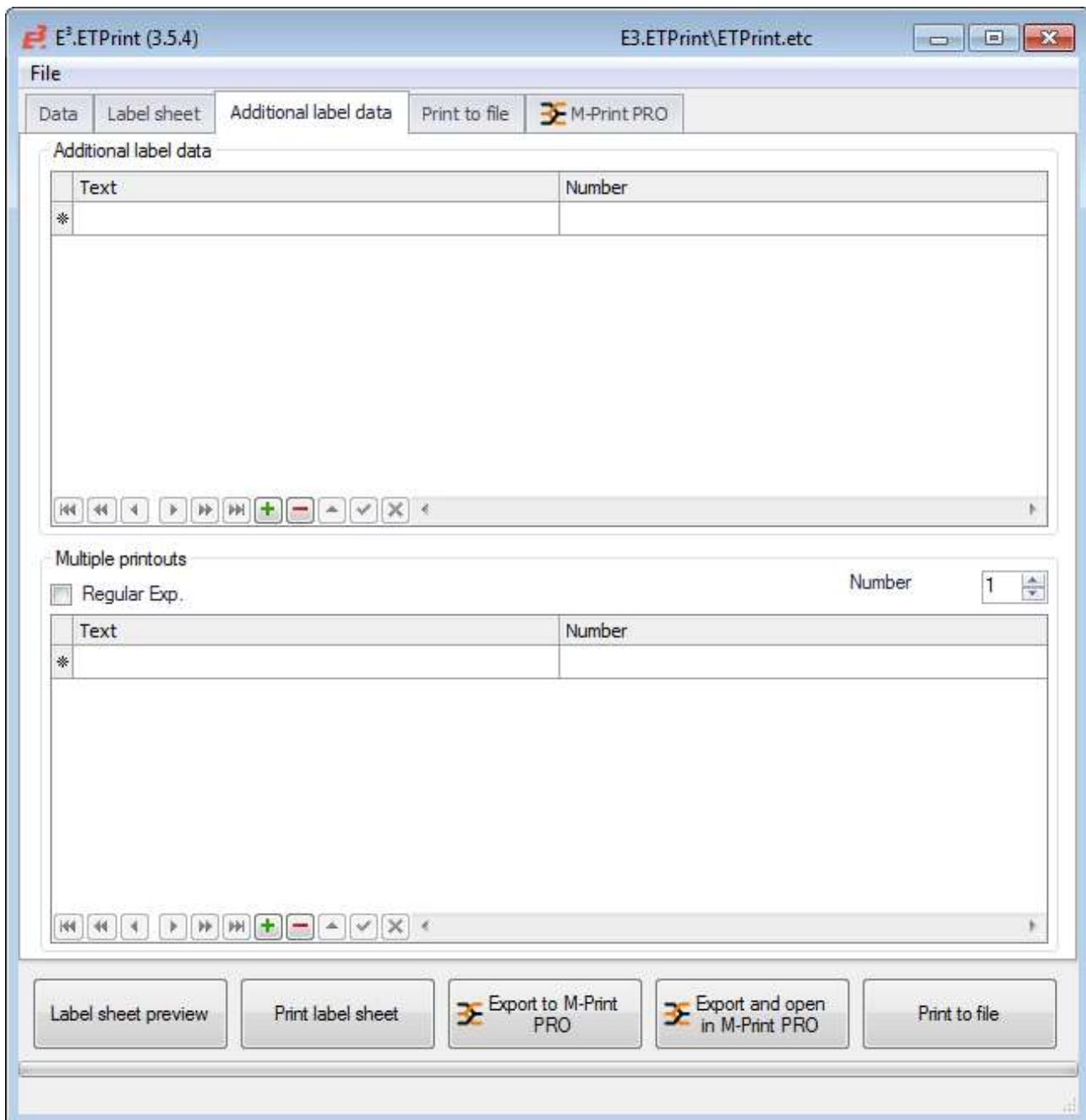
top / bottom / left / right

The label borders can be defined here.

Label

width/height	The label size can be defined here.
distance hor. / ver.	The distance between labels can be defined here.
Alignment	
left / centered / right	The alignment of the label text can be defined here.
Definition of label parameters	
Printer selection	When checked, a printer can be selected before print preview, when unchecked, the default printer will be used.
Adjust to label size	When checked, texts to be printed on labels are adjusted to the label size.
Multiline print	When checked, label data is exported if several lines have been selected.
Font	The font to be printed can be set here.
Font size	The font size for the labels can be defined here.
Bold	When checked, the font is exported bold.
Start printing with: Line / Column	<p>„Start printing with“ helps to define where the print shall begin by entering a line and column. Example: Line=2, Column=2</p> 

3.1.4 Tab 'Additional label data'



File

Data Label sheet **Additional label data** Print to file M-Print PRO

Additional label data

Text	Number
*	

Multiple printouts

☐ Regular Exp. Number 1

Text	Number
*	

Label sheet preview Print label sheet Export to M-Print PRO Export and open in M-Print PRO Print to file

Tab 'Additional label data'

Additional label data

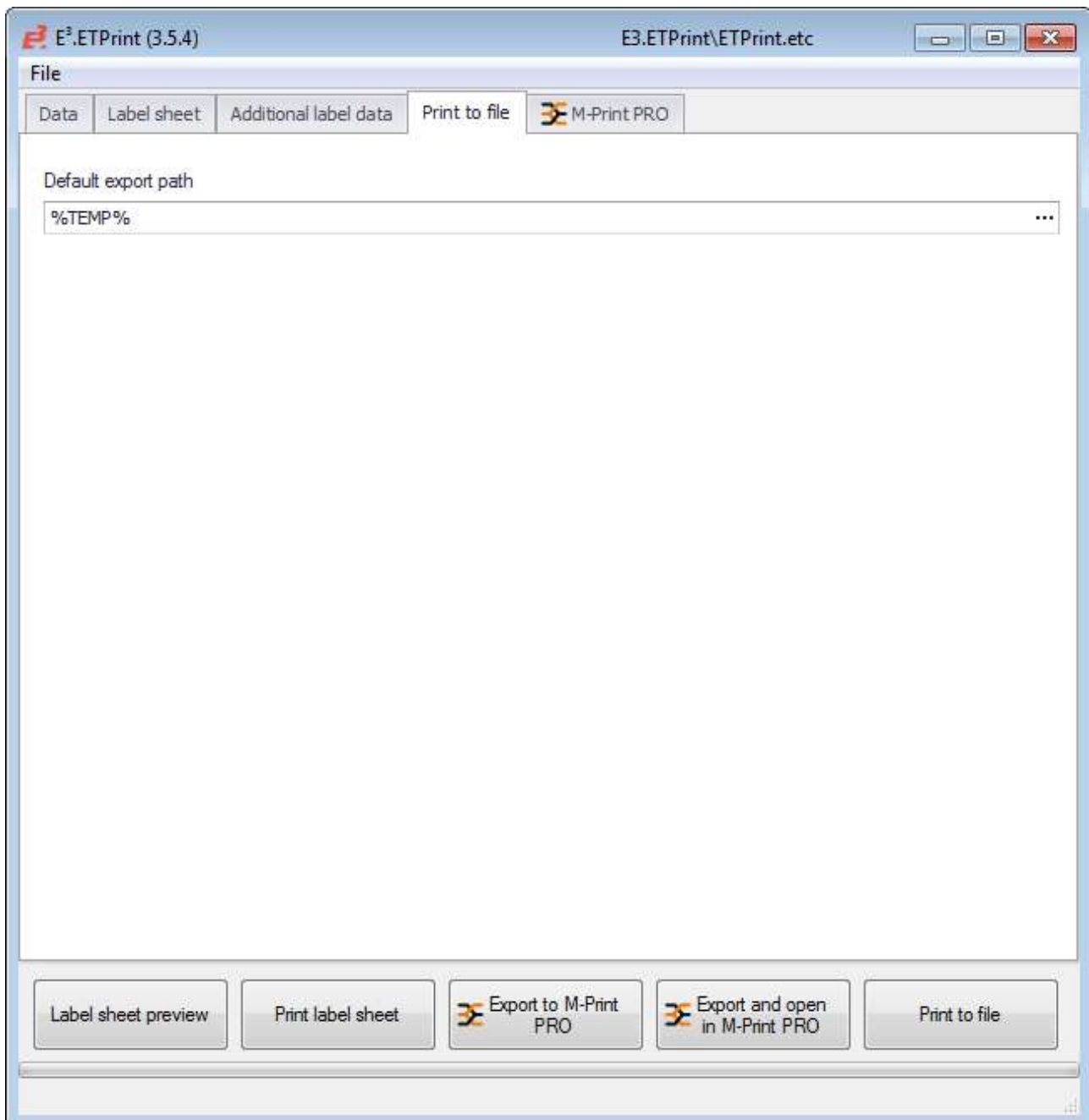
Text / Number

Enables to enter any texts, which shall also be exported as labels (for multiline texts insert a line break by using the format character # e.g. "Line1#Line2").

Multiple printouts

Reg. Expression	Regular expressions can help to set filters which are used for the results data. Labels can additionally be printed or excluded from printing.
Number	Number defines the number of data objects to be printed. Example: <ul style="list-style-type: none">▪ *W1*->0 All devices containing the text <i>W1</i> are omitted▪ *XJ*->2 All devices containing the text <i>XJ</i> are printed additionally 2 times!

3.1.5 Tab 'Print to file'



Tab 'Print to file'

Default export path

Defines a default export directory which is used to save the *PRN* file. (See under „**Print to file**“).

3.1.6 Tab 'M-Print PRO'

E3.ETPrint (3.5.4) E3.ETPrint\ETPrint.etc

File

Data Label sheet Additional label data Print to file M-Print PRO

Marker

Marker type attribute
[Weidmueller_Marker_ArticleNumber - Component]

Device default marker 1249870000

Connector default marker 1249870000

Cable default marker 1249870000

Cable duct default marker 1249870000

Terminal default marker 1249870000

Block default marker 1249870000

Mounting rail default marker 1249870000

Tube default marker 1249870000

Hose default marker 1249870000

M-Print Pro

Csv delimiter ,

Local M-Print PRO installation path


M-Print PRO import script C:\weidmueller\E3.ETPrint\ETPrint_M-PrintPRO_Importscrip

Export M-Print PRO installation path

Default export path %TEMP%

Label sheet preview Print label sheet Export to M-Print PRO Export and open in M-Print PRO Print to file

Tab 'M-Print PRO'	
Marker	
Marker type attribute	Here, component- and device attributes are listed (owner: cable, connector, device, block, cable type, hose/tube) which can be used for the marker type. The attribute set is used for the marker type from the property selection (see under tab 'Data' – Edit properties).
Device default marker	Default marker article number, used when the „Marker type attribute“ can't be found on a device.
Block default marker	Default marker article number, used when the „Marker type attribute“ can't be found on a block.
Connector default marker	Default marker article number, used when the „Marker type attribute“ can't be found on a connector.
Mounting rail default marker	Default marker article number, used when the „Marker type attribute“ can't be found on a mounting rail.
Cable default marker	Default marker article number, used when the „Marker type attribute“ can't be found on a cable.
Tube default marker	Default marker article number, used when the „Marker type attribute“ can't be found on a tube.
Cable duct default marker	Default marker article number, used when the „Marker type attribute“ can't be found on a cable duct..
Hose default marker	Default marker article number, used when the „Marker type attribute“ can't be found on a hose.
Terminal default marker	Default marker article number, used when the „Marker type attribute“ can't be found on a terminal.
M-Print Pro	
Csv delimiter	Delimiter of the CSV-file for the M-Print Pro Export file.
M-Print PRO import script	Path to the M-Print Pro Import script. Further information is to be found in the M-Print PRO -Documentation.
Default export path	Default export directory for the M-Print PRO CSV-file.
Local M-Print PRO installation path	Defines the path to the local M-Print Pro EXE. Is used for " Export and open in M-Print PRO ". Is automatically filled from Registry at first start.

Print directly	<p>Is used to define whether the created label sheets shall be directly printed in M-Print PRO.</p> <p>If Print directly is active, label sheets can directly be printed in M-Print PRO. Thus, the button Export / Open in M-Print PRO is renamed to Export / Print to M-Print PRO. Besides that, the button Save in M-Print PRO is greyed-out:</p>  <p>If Print directly is not active, the label sheets can directly be opened in M-Print PRO.</p> <p>See under 4.2.5</p>
Export M-Print PRO installation path	<p>Defines the path to the M-Print Pro EXE on a computer where the export file shall be opened. Is used for "Export to M-Print PRO". Is automatically filled from Registry at first start.</p>

3.2 Main Menu

3.2.1 Main Menu 'Data'

The following commands are available in the main menu **Data**:

Main Menu 'Data'	
Open configuration	The used setting values can be save das configuration (See 4.2.1Open/Save configuration).
Save configuration	
Close	Closes the programme E³.ETPrint .

4 Functional Description

4.1 Open/Close

4.1.1 Open **E³.ETPrint**:

NOTE




In **E³.series** a project must be open.

After successful installation, **E³.ETPrint** can be opened by confirming the file **E3.ETPrint.exe**.

4.1.2 Close **E³.ETPrint**:

To close **E³.ETPrint**,

- Click the button **Close** in the top right-hand corner of the window: 
- or
- Click on **Data -> Close** in the main menu

4.2 Use

4.2.1 Open/Save configuration

The currently used configuration is automatically saved at print.
When opening **E³.ETPrint**, the default configuration file under
`%AppData%\Zuken\E3.ETPrint\ETPrint.etc` is always used.

NOTE



The programme can also be opened with the start parameter „-ConfigFile“ for network installations. Thus, the path to the file must be given:
`E3.ETPrint.exe -ConfigFile <Path of configfile>`

When the file is read-only it will not be saved.

Further configurations can optionally be saved/loaded.

How to save a configuration:

- Please ensure that all set options/values are set correctly in the tabs,
- Click on **Data -> Save configuration...** afterwards,
Insert the desired name and the memory location for the configuration file within the dialogue **Save as** .

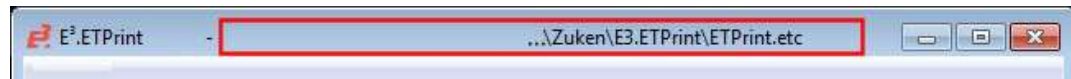
How to open a configuration:

- Click on **Data -> Open Configuration...** in the main menu,
- Select the desired configuration file within the dialogue **Open**

HINT



The file path of the currently used configuration file appears in the top part of the Dialogue:

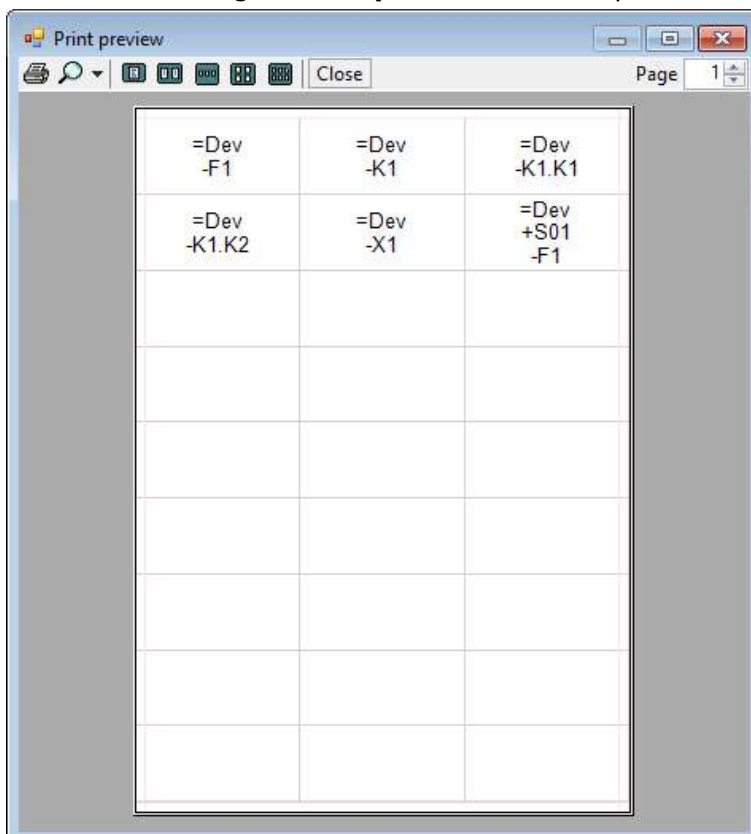





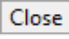
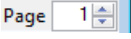
4.2.2 Label sheet preview

The created label sheet can be displayed in a print preview window before printing. It is used to check whether the required setting values are correct or not.

How to open the label sheet preview:


- Left-click on the button **Label sheet preview**,
- The dialogue **Print preview** will be opened:



Print preview	
	Prints the label sheet by using the predefined printer.
	Defines the zoom level.
	The sheet division can be defined via the buttons: <ul style="list-style-type: none">▪ Full sheet▪ Two sheets▪ Three sheets▪ Four sheets▪ Six sheets
	Is used to close the print preview window.
	Is used to navigate to the desired sheet.

4.2.3 Print label sheet

The created label sheet can be printed directly.

HINT	
	When Printer selection in the tab Label sheet is checked, a printer can be selected. If it is unchecked, the default printer will be used.

How to print label sheets:

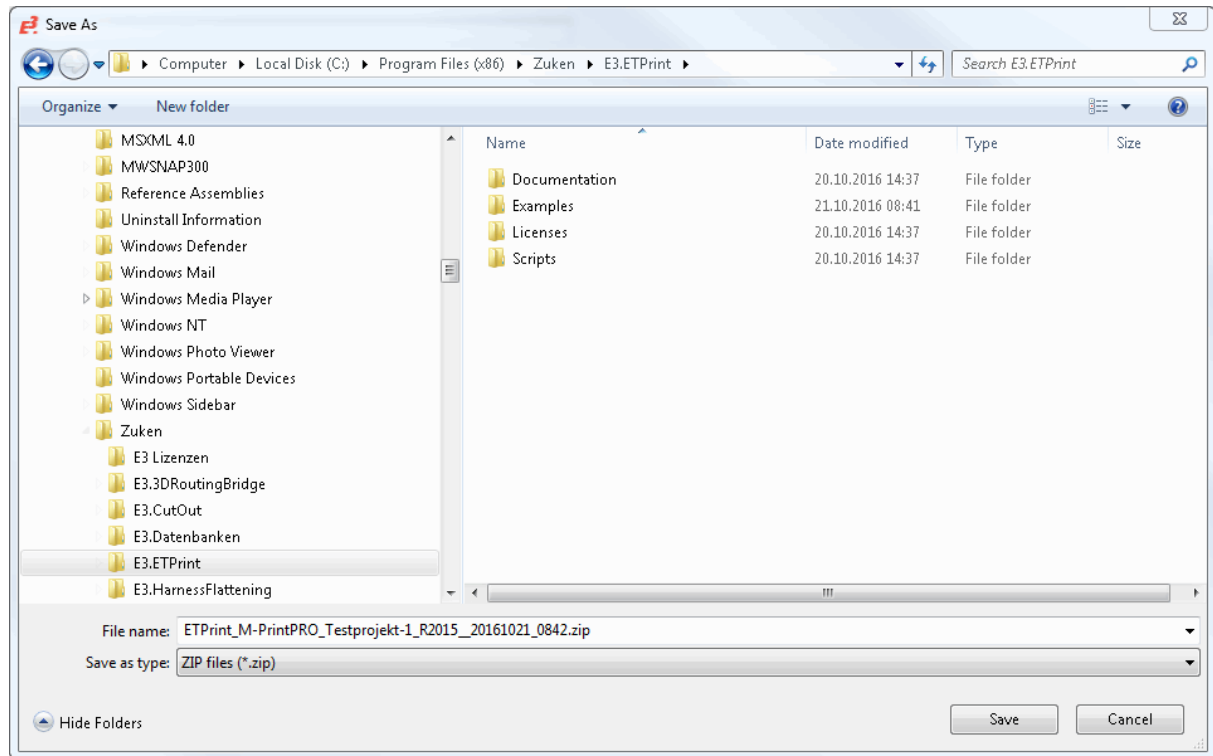
- Left-click on the button **Print label sheet**.
- The dialogue **Print** is opened.

4.2.4 Export to M-Print PRO

The created label sheet can be exported as CSV-file. This CSV-file can be imported with the programme **M-Print PRO**.

How to export label sheets as *Container*:

- Left-click on the button **Export to M-Print PRO**,
- the dialogue **Save as** is opened:



- → A ‚Container‘ (zip-file) with a CSV file and control files are created in the predefined default directory.
- Unzip the ‚Container‘ (zip-file) on the desired computer,,
- Execute the unzipped Batch-file.

4.2.5 Export and open in M-Print-PRO

It is possible to export the label sheets and to open them directly in M-Print PRO.

How to export label sheets and open them in M-Print PRO:

- Left-click on the button **Export and open in M-Print Pro**
The export data is directly opened in M-Print PRO

4.2.6 Print to file

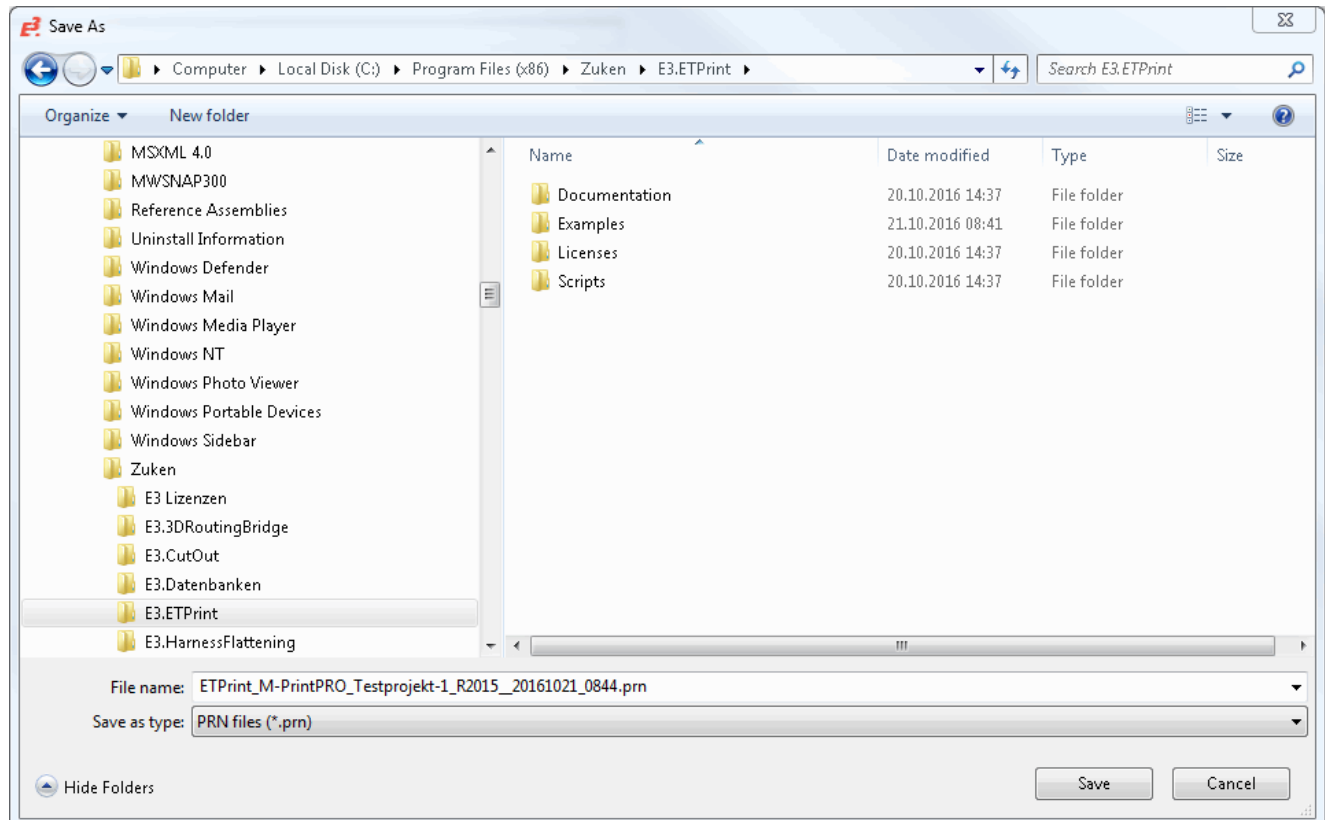
It is possible to export the label sheets as *PRN*-file in ASCII-format. Thus, the font and label size settings are omitted as they can't be analysed in the *PRN*-file. When exporting multiline texts, the texts are exported separated by a space character. In general, one line per label is written at *PRN*-export.

When the placeholder **\$p** is used as file name, it will be replaced by the project name at creation of the file.

How to print label sheets as *PRN*-file:

- Left-click on the button **Print to file**,
- The dialogue **Save as** is opened:

Here, a default export directory can be defined where the *PRN*-file can be saved. (See under „**Print to file**“).





Americas

North America

Zuken USA Inc.
Westford, MA 01886, USA
Tel: +1 978 692 4900

Asia

Japan

Zuken (World Wide Head Office)
Yokohama, Kanagawa 224-8585, Japan
Tel: +81 45 942 1511

China

Zuken (Shanghai) Technical Center Co., Ltd.
Room 301, No.555 Nanjing West Road,
Shanghai, 200041, People's Republic of China
Tel: +86-21-3218-1784

Korea

Zuken Korea Inc.
Seoul 135-283, Korea
Tel: +82 2 5648031

Singapore

Zuken Singapore Pte Ltd.
#22-05 Gateway East, Singapore 189721
Tel: +65 6392 5855

Taiwan

Zuken Taiwan Inc.
Taipei 110, Taiwan
Tel: +886 2 7718 1116



Europe

Germany

Zuken GmbH (European HQ)
D-85399 Hallbergmoos, Germany
Tel: +49 89 7104059 00

Zuken E3 GmbH
D-89079 Ulm, Germany
Tel: +49 7305 9309 0

Zuken E3 GmbH
D-30659 Hannover, Germany
Tel: +49 511 8595 9489

Switzerland

Zuken E3 GmbH
CH-5504 Othmarsingen, Switzerland
Tel: +41 62 561 08 00

United Kingdom

Zuken UK Ltd.
Bristol, BS32 4RF, UK
Tel: +44 1454 207 801

France

Zuken S.A.
#91974 Les Ulis Cédex, France
Tel: +33 1 69 29 48 00

Italy

Zuken S.r.l.
20090 Milanofiori Assago, Milan, Italy
Tel: +39 02 575 921

Netherlands

Zuken GmbH
NL-6075 HA Herkenbosch, The Netherlands
Tel: +31 475 520 998