

SLF 7.62HP - change of lock and release lever

Dear Madam or Sir,

the below listed articles will be supplied in a modified revision. Please pass this product information on to your employees and, if needed, to your customers. All modifications are performed for reasons of product improvements.

1. Initial situation

A reliable locking system is one of the main prerequisites for safe operation of equipment. Increasingly compact formats and greater connection density complicates the handling of plug-in connectors on the front panel. An increasing number of poles also require greater force when detaching the plug. With these challenges in mind, we have revised the design of the lock & release levers of our connector system OMNIMATE Power SLF 7.62HP products

2. Technical change

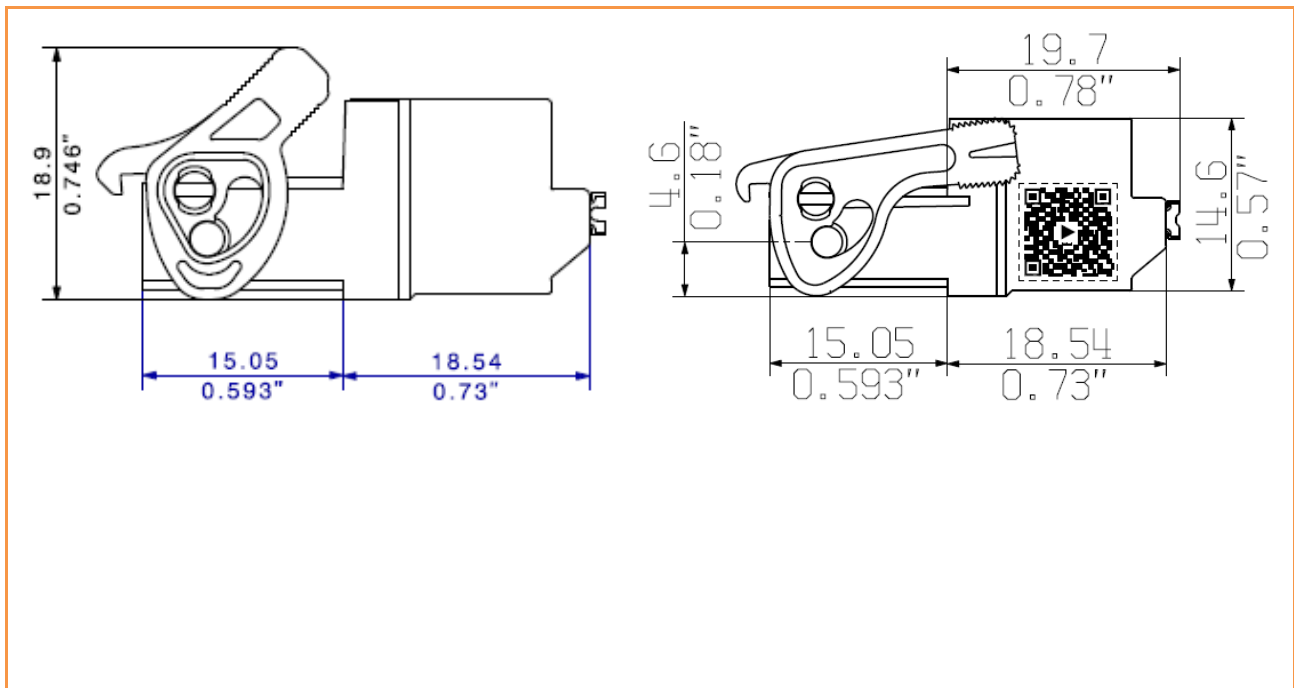
Compared with the previous the new lock & release lever is designed much flatter. Due to this compact design more connectors can be placed side by side on the front panel.

Other benefits of optimized lock & release lever:

- The lock & release lever latches automatically during insertion (called auto-lock-function). Subsequent locking after plugging is not necessary.
- Higher leverage makes the disconnection of the male plug easier.
- Improved handling in confined spaces by a longer lever.
- When the lever is actuated, the female connector is released more gently from the component assembly. This is important in case of extreme ambient temperatures.
- When the lock & release lever is locked, the reinforced latching-hock increases the maximum pull-out force and avoids an inadvertent disconnection of the male plug

Old version

New version



3. Reason for change

- Standardization of the plastic material

4. Availability

- From Q1/2021, the production will gradually be converted to the new version
- There will be no specific stock clearance
- Order-No. and price per 100pcs. won't be changed
- All counterparts can still be used with old and new lock and release lever

5. Affected parts

part number	part description
1043750000	SLF 7.62HP/02/180LR SN BK BX
1043710000	SLF 7.62HP/02/180LR SN OR BX
1043760000	SLF 7.62HP/03/180LR SN BK BX
1043720000	SLF 7.62HP/03/180LR SN OR BX
1043770000	SLF 7.62HP/04/180LR SN BK BX
1043730000	SLF 7.62HP/04/180LR SN OR BX
1043780000	SLF 7.62HP/05/180LR SN BK BX
1043740000	SLF 7.62HP/05/180LR SN OR BX

We are very sorry for all the inconveniences caused and doing everything to adjust this product change as smooth as possible without big influence on delivery times and general functions.

For further questions please contact your sales office directly. All contacts for sales representatives are available here: www.weidmueller.com/contact

Best regards

Product Management

Weidmüller Interface GmbH & Co. KG
Klingenbergstraße 16, 32758 Detmold, Germany

Weidmüller – Your partner in Industrial Connectivity
We look forward to sharing ideas with you – **Let's connect.**