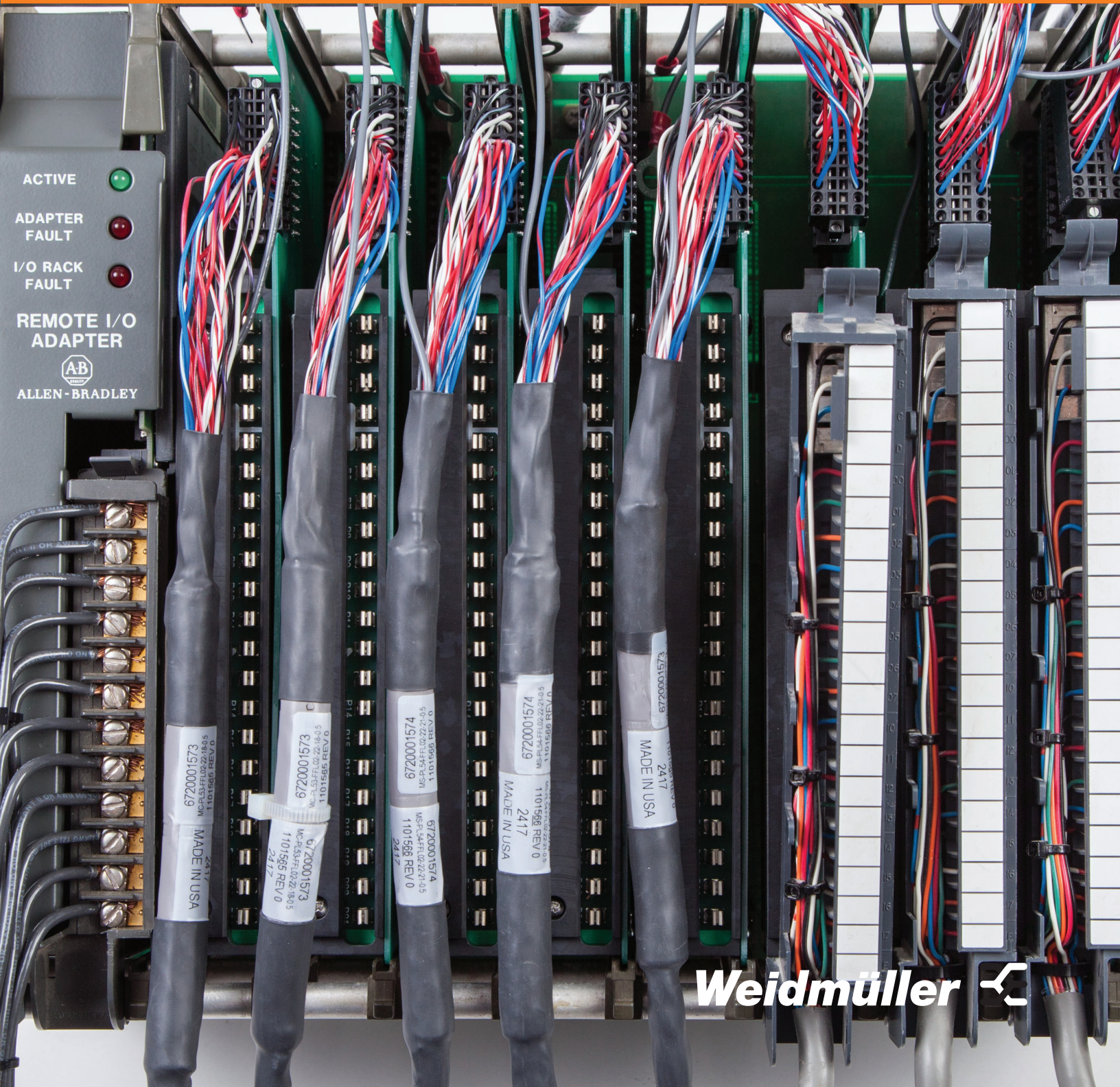


Control System Migration

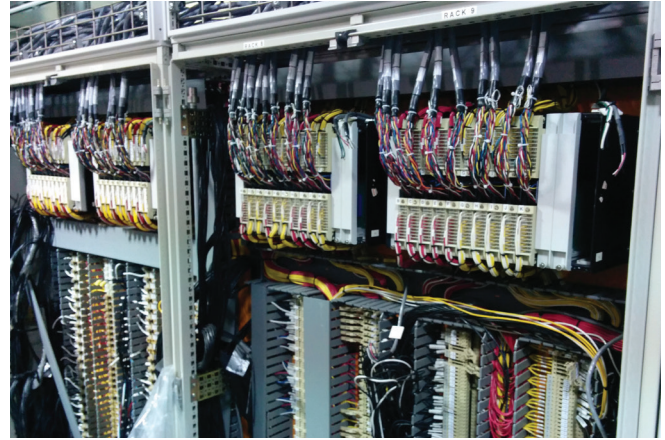
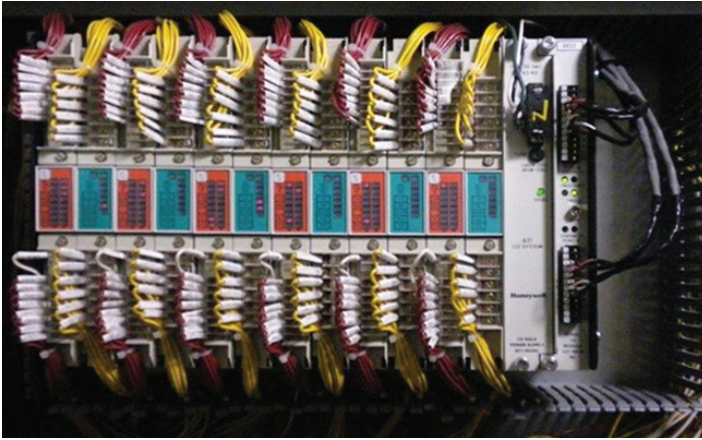
A universal conversion platform for legacy PLC Systems

Allen-Bradley PLC 5 1771 Migration



Weidmüller 

Streamline Your PLC Migration



Weidmuller's patented new universal conversion/migration platform will substantially reduce the time and expense of updating your legacy Allen-Bradley PLC 5 1771 to your new system.

Uniquely designed solution

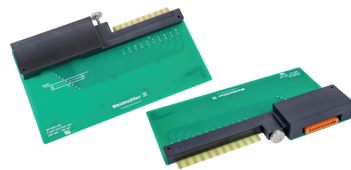
The key to Weidmuller's migration platform is in the design. It permits your existing field wiring to remain in place and undisturbed on the front panel adaptor and eliminates the need to wire-trace or ring-out.

Compatibility means flexibility

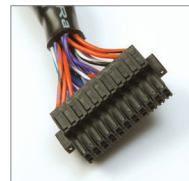
The assembly is a universal conversion/migration system for all legacy Allen-Bradley PLC 5 1771, enabling you to seamlessly migrate to any new control system.

Minimal components maximize migration efficiency

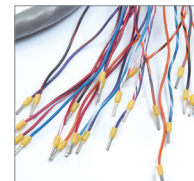
Weidmuller's migration solution includes just five versions of a card adaptor, 10-, 12-, 18-, 21- and 40-points, plus five cable types to accommodate flying leads or pre-wired field connections.



Card Adaptors



21-Pin Connector



Flying Ferrule Leads



UL and CSA Approved Cables

Global approvals

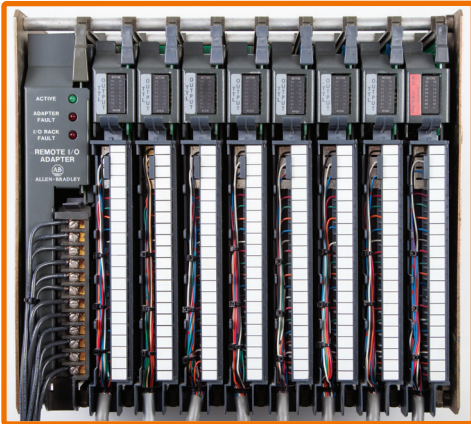
The card adaptors are cURus approved and the certified cables are UL and CSA listed. In addition, the cables are RoHS and FT4 rated at 300V.



Migrate and test in hours, not weeks.

Using Weidmuller's patented migration platform, here's how easy it is to migrate your PLC, step-by-step:

START



Existing IPC Logic Manager

STEP 1



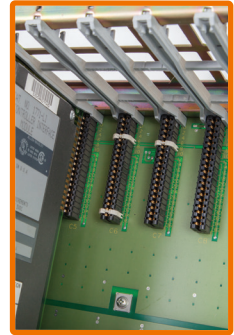
Remove existing Field Wiring adaptors

STEP 2



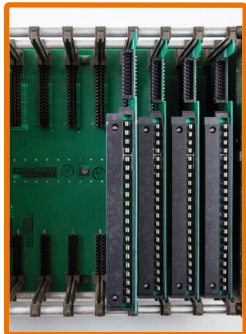
Remove existing controller cards

STEP 3



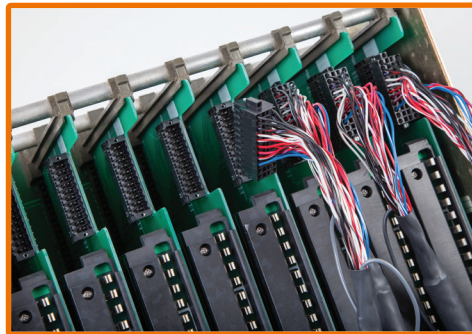
Remove all key codes from the backplane connectors.

STEP 4



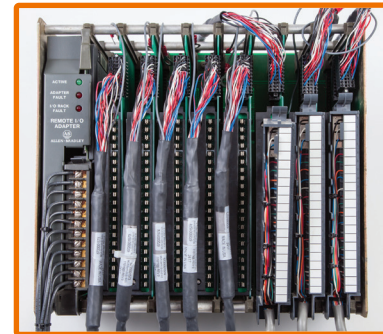
Replace controller card with Weidmuller adaptor card

STEP 5



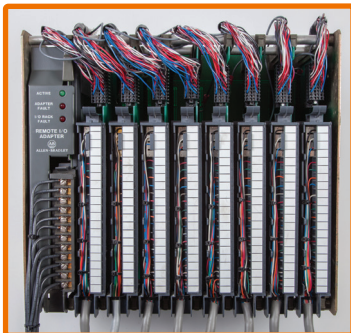
Connect cable with connector to adaptor card

STEP 6



Reattach existing Field Wiring adaptors

DONE!



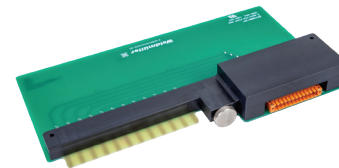
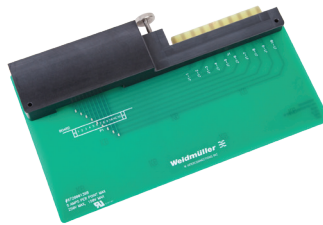
Completed and migrated PLC System

Benefits

- Keep your existing field terminations landed. No ring out needed!
- Perform your PLC conversion in hours instead of weeks.
- All components are plug-and-play with keyed connectors to eliminate any chance of wiring errors.

Universal Card Adaptors

- Feed through connections
- PLC 5 1771 conversion to pluggable connector(s)
- 10-, 12-, 18-, 21- or 40-point cards



Technical data

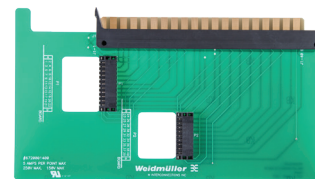
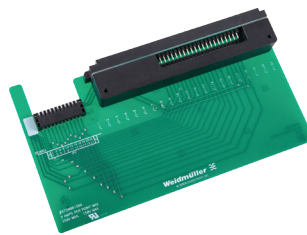
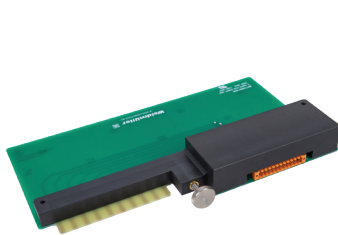
Connection data	
Process side	Card edge fingers on PWB for legacy style connectors
Type	OEM Connector
Control side	One 3.5 pitch 12-pin SL header
Type	Screw type connection
Rated data	
Rated voltage	250V max., 150V max. (UR)
Max. current per channel	5A
Operating temperature	0°C to +50°C
Storage temperature	0°C to +50°C
Approvals	
Standards	cURus (E141197)
Physicals	
	Designed to fit in existing I/O rack
Note	Cablings not included

Ordering data

Model	Qty	Part No.
10-point PLC 5 1771-WA/WC carrier	1	6720001398

Model	Qty	Part No.
12-point PLC 5 1771-WB/WD carrier	1	6720001397

Note



Technical data

Connection data	
Process side	Card edge fingers on PWB for legacy style connectors
Type	OEM Connector
Control side	One 3.5 pitch 22-pin S2L header
Type	Tension type connection
Rated data	
Rated voltage	150V max.
Max. current per channel	5A per point max. 10A per whole assembly
Operating temperature	0°C to +50°C
Storage temperature	0°C to +50°C
Approvals	
Standards	cURus (E141197)
Physicals	
	Designed to fit in existing I/O rack
Note	Cablings not included

Ordering data

Model	Qty	Part No.
18-point PLC 5 1771-WI carrier	1	6720001399

Model	Qty	Part No.
21-point PLC 5 1771-WG carrier	1	7940125466
21-point PLC 5 1771-WH/WHF/WHFB carrier	1	7940125460

Model	Qty	Part No.
40-point PLC 5 1771-WN carrier	1	6720001400

Note

Migration Cables

Select the cable configuration that best fits your application

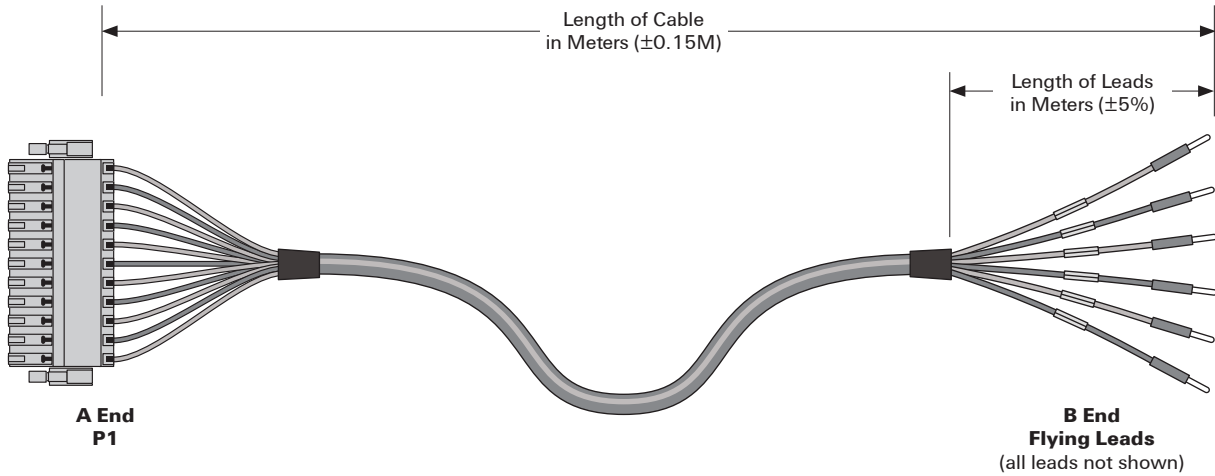
Weidmuller has teamed with designers to provide a simple and easy solution to migrate your control system. This migration system features universal card adaptors and engineered cables.

On Weidmuller.com, we provide you with these components and the information needed to design your migration bill of materials:

- **Engineered Cables**

These special cables are designed and built to make the migration of your PLC simple and easy. A handy cable designer utility, the Migration Cable Configurator, has been developed to make cable design, selection, and cost evaluation straightforward and fast.

To start designing your migration system, visit: www.weidmuller.com/migration



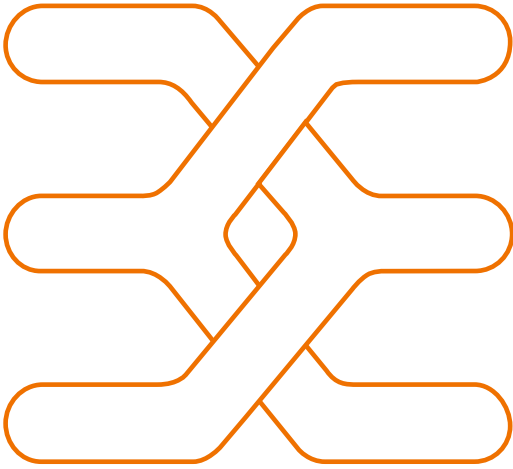
Example: MCP52FFL101812010

Marshalling Cable PLC5		Cable Entry, A End	Lead Type, B End	Length of Leads, B End*		Wire AWG	No. of Wires	Length of Cable in Meters*	
P51	10 Terminal Points	FFL	Ferruled Flying Leads	03	0.3 meters	22	22 AWG	1.5	1.5 meters
P52	12 Terminal Points	BFL	Blunt-End Flying Leads	•	•	18	18 AWG	005	5.0 meters
P53	18 Terminal Points	TFL	Tinned Flying Leads	10	1.0 meters			010	10.0 meters
P54	21 Terminal Points	RFL	Ring Lug Flying Leads	•	•			100	100.0 meters
P55	40 Terminal Points			99	9.9 meters				

*Note: Lengths can be customized to your needs

Not migrating from a PLC 5 1771 platform? Contact your Weidmuller representative. We have the knowledge and technology to help migrate other legacy control systems.

Weidmuller – your system migration solution expert!



Weidmuller is the leading manufacturer of components for electrical connection technology to transmit energy, signals and data. The Weidmuller product portfolio ranges from terminal blocks, PCB connectors and terminals, protected components, Industrial Ethernet components, I/O components and relay sockets to power supplies and over-voltage protection modules suitable for all applications. Assemble Services, marking solutions with a variety of tools and software systems, round off the range. As an OEM supplier, the company sets global standards in the field of electrical connection technology.

Weidmuller, Canada

10 Spy Court
Markham, Ontario L3R 5H6
Telephone: (800) 268-4080
Facsimile: (877) 300-5635
Email: info1@weidmuller.ca
Website: www.weidmuller.ca

Weidmuller, Mexico

Bldv. Hermanos Serdán 698,
Col. San Rafael Oriente
Puebla, Puebla, Mexico
C.P. 72029
Telephone: 01 222 2686267
Facsimile: 01 222 2686219
Email: clientes@weidmuller.com.mx
Website: www.weidmuller.com.mx

Weidmuller, United States

821 Southlake Blvd.
Richmond, Virginia 23236
Telephone: (800) 849-9343
Facsimile: (804) 379-2593
Email: info@weidmuller.com
Website: www.weidmuller.com

Let's connect.

www.weidmuller.com

Weidmüller 