



Wireless Connectivity

WI-I/O-9-U3: Wireless Mesh Networking I/O and Gateway

Combines multi I/O, modem and gateway functionality into a single device

Weidmüller's new WI-I/O-9-U3 Wireless Transceiver combines multi I/O, modem and gateway functionality with IoT connectivity into a single device, providing the ultimate all-in-one solution. The WI-I/O-9-U3 extends communications to sensors in local, remote and difficult-to-reach locations, ensuring seamless data collection and monitoring from even the most challenging environments.

Product highlights

- Scalable, simple to complex and point to multi-point network design
- Flexible, native Ethernet support and comprehensive gateway capabilities for Ethernet and serial protocols, including Modbus TCP/RTU, DNP3 I/O and MQTT + Sparkplug B
- Secure AES encryption, advanced IP filtering, multi-level authentication and comprehensive user access and change event logging



ModbusTCP

dnp
Distributed Network Protocol

MQTT
Sparkplug



Long-range communications
902-928MHz Frequency
Hopping Spread Spectrum (FHSS)
with up to 1W power



Save time & effort
Effortlessly configure intricate network topologies with flexible, intuitive modes and over-the-air diagnostics and configuration



Reduce installation time
Significantly reduces the installation time, costs and challenges associated with traditional wiring



All-in-one solution
Integrates expandable I/O, modem and gateway functionality – as well as IoT connectivity – into one device

Weidmüller, Inc

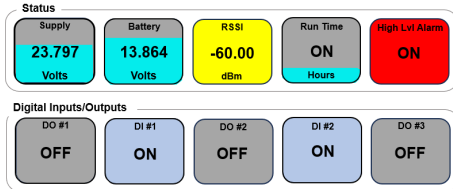
821 Southlake Blvd.
Richmond, Virginia 23236
Telephone: (800) 849-9343
Website: www.weidmuller.com
Email: customerservice@weidmuller.com

WI-I/O-9-U3: Wireless I/O and Gateway

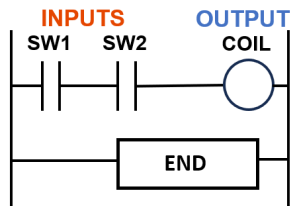
Improves overall system performance

Features & Benefits

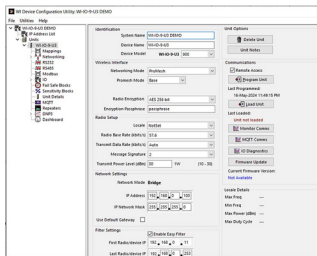
Integrated HMI Lite Dashboard for real-time monitoring



Integrated IO Plus Logic engine for basic controlling of I/O points

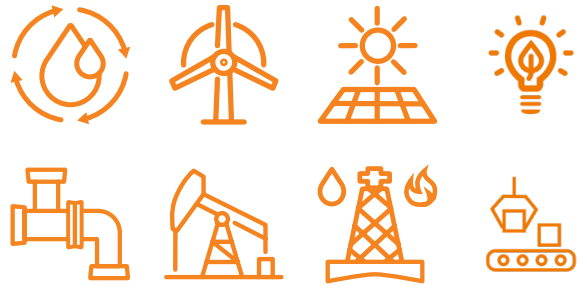


User-friendly configuration utility simplifies the selection of I/O points



Approvals

cULus Listed; UL/CSA Class I, Division 2; ATEX; IECEx Na IIC; CE



Applications

- Water and wastewater: flows, levels, pumps
- Renewables: solar farms, wind turbines, hydro
- Irrigation: slew gate controls, levels
- Oil and gas networks: gas well production, lift pump
- Environmental: storm warning, smokestacks, filters
- Mining infrastructure: conveyor, reclaimer, pumps

Ordering data

Band	RF power	Type	Order number
902 - 928MHz a	10mW - 1W	WH/O-9-U3-900	2914860000
869.XXXMHz a	500mW/5mW a	WH/O-9-U3-869	2914850000

Notes:

- * An 869 MHz wideband variant with up to 500 mW power is available for use in Europe only
- a. Specific parameters set with country / region selection in configuration
- b. 902-928 MHz FCC 15.247 band (USA)
- c. 869 MHz ISM band (Europe)
- d. 915-928 MHz LIPD Class license (Australia)
- e. Typical maximum line-of-sight range (check local conditions of use)
- f. Maximum distance 3937' (1200m)

Want to learn more about Weidmüller's U3 gateway?

Contact your local Weidmüller sales representative today!
www.weidmuller.com/sales



Learn more at www.weidmuller.com/u3

Weidmüller, Inc

821 Southlake Blvd.
 Richmond, Virginia 23236
 Telephone: (800) 849-9343
 Website: www.weidmuller.com
 Email: customerservice@weidmuller.com