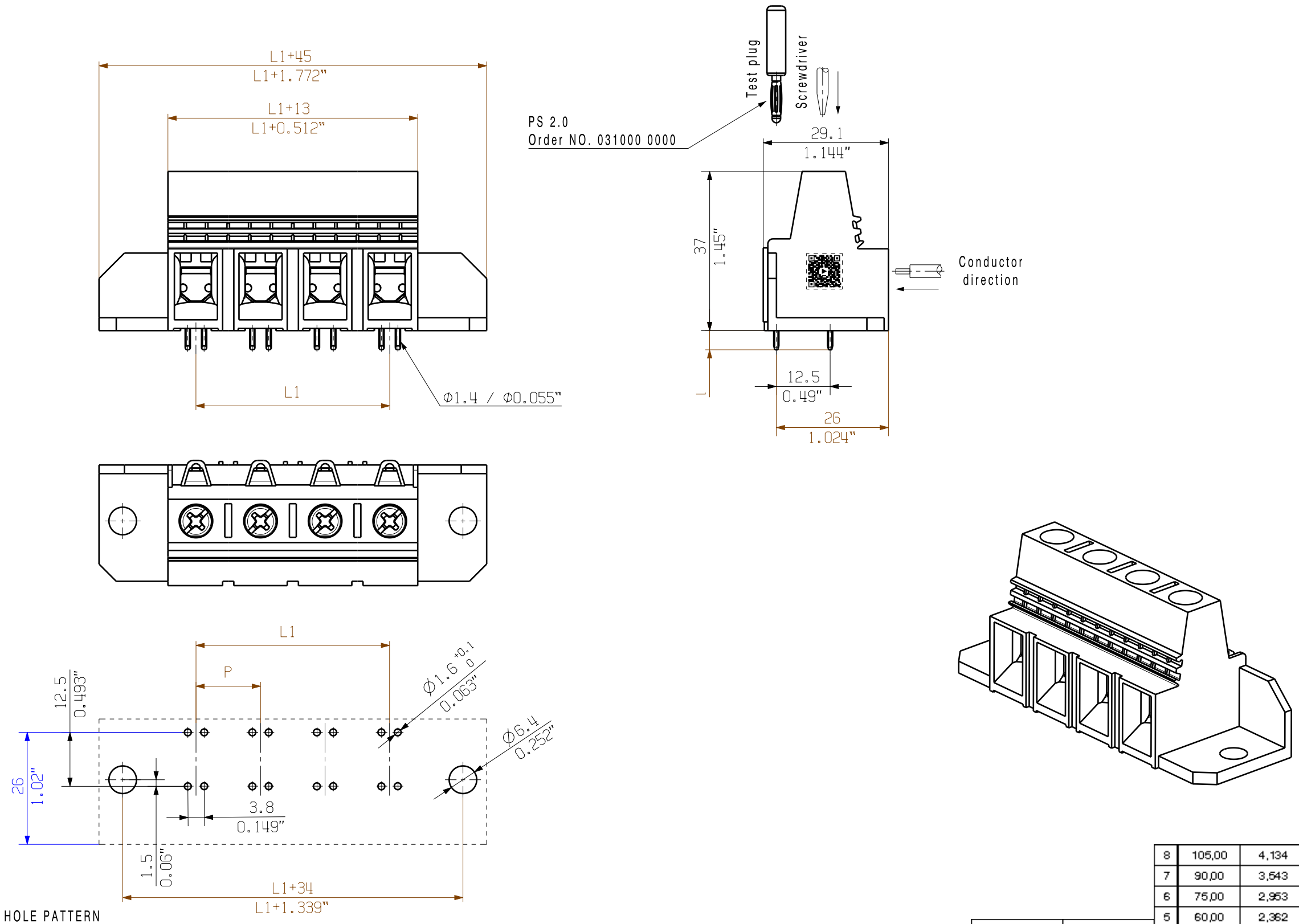


The reproduction, distribution and utilization of this document as well as the communication of its contents to others without explicit authorization is prohibited. Offenders will be held liable for the payment of damages. Weidmueller exclusively reserves the right to file for patents, utility models or designs.

© Weidmueller Interface GmbH & Co. KG

Dimensions without tolerances are no check dimensions

The English version is binding






For the mounting of PCBs, it should be noted that the rated data relates only to the PCB components alone. The necessary creepage and clearance paths must be observed in connection with the respective applicant in accordance to IEC 60664-1 (VDE 0110). The current-carrying capacity and pitch tolerance is to be determined according to DIN IEC 60326-3 very fine.

Weidmüller PCB components are tested to the IEC 60947-7-4 standard, and are valid for its field of application. Provided that the components are used to the intended purpose, all requirements with respect to the occurring of electrical, mechanical, thermic and corrosive stress will be satisfied.

GENERAL TOLERANCE:
DIN ISO 2768-m

P = Pitch
n = No. of Poles
l = Pin length
Shown: LXB 15.00/04/90/...

<div></div>	EC00000683	00	Prim PLM Part No.: 009292			Prim ERP Part No.: 1226480000		
	First Issue Date 14.05.2018	Max. nos.	<div>Weidmüller</div> <div></div>			<div>29942</div> <div>Drawing no. Issue no. </div> <div>Sheet 02 of 04 sheets</div>		
		Modification						
		<div></div>		Date	Name	<div>LX.. 15.00/./90...</div> <div>LEITERPLATTENKLEMME</div> <div>PCB TERMINAL</div>		
Drawn	03.12.2018	Xiang, Keqin						
Responsible		Xiang, Keqin						
Approved	04.12.2018	Xu, Shary						
Scale: 1/1 Size: A3			Product file: 7234 LX 15.00					
Drawings Assembly								