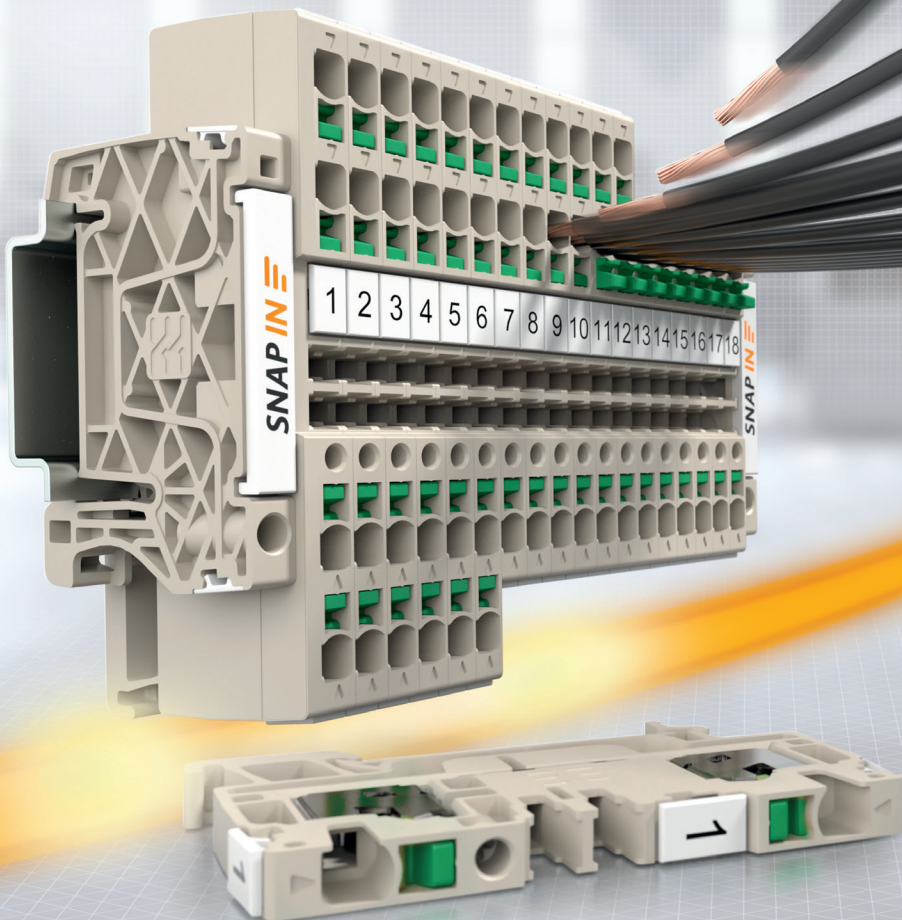


Terminal Blocks

# Klippon® Connect – SNAP INto the Future

The world's first terminal blocks with innovative SNAP IN technology

**SNAP IN** 



**Weidmüller** 





# SNAP IN

**Invented by Weidmüller.**

## Faster Connections Than Ever Before

The innovative SNAP IN connection technology enables safe wiring in record time. With SNAP IN, even flexible conductors without wire-end ferrules can be connected intuitively and without tools, even in fully automated wiring processes. As a pioneer in the field of panel building, we've been shaping the market for years. With the new SNAP IN connection technology, we can take your wiring processes to a whole new level.

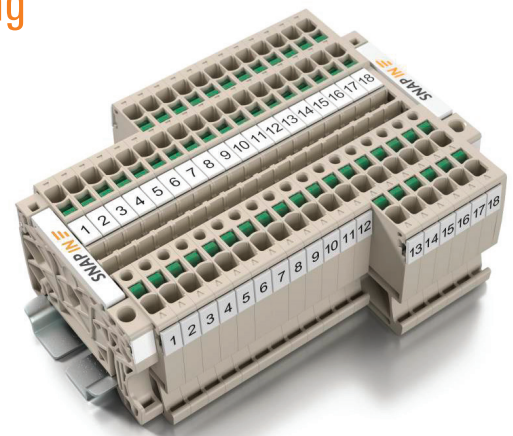
## The business case for more efficient panel building

The most important factors in panel building are speed, safety and reliability. What if you could experience a revolutionary advancement in the wiring of control cabinets that starts as early as the planning phase?

Download our new white paper demonstrating the business case for advancing how control cabinets are constructed and achieving faster wiring times — with a single termination completed in just one second. Learn how to double cost savings in panel building, be “robot ready” and significantly enhance your competitive advantage in the market.



[Download the White Paper](#)

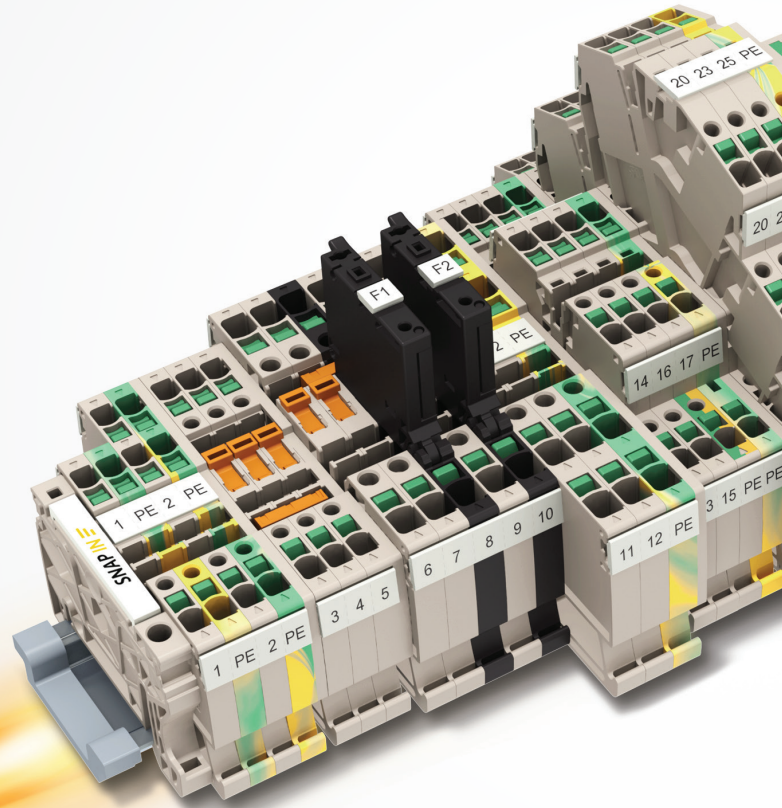


# The Worldwide Novelty from the Pioneer of Industrial Connectivity

## Klippon® Connect terminal blocks with innovative SNAP IN technology

Time is money. For this reason, installation work in control cabinet construction must be carried out even faster, preferably automated. At the same time, the connections should be permanently reliable, safe and easy to maintain.

The new Klippon® Connect terminal blocks with Weidmuller's revolutionary SNAP IN technology meet all these requirements — and are extremely easy to use: fine-stranded stripped conductors just need to be inserted into the connection point, and the connection point snaps shut with a clearly audible click. The conductor is permanently and reliably contacted. To release the connection, press the green pusher. It couldn't be faster or easier.



# SNAP IN

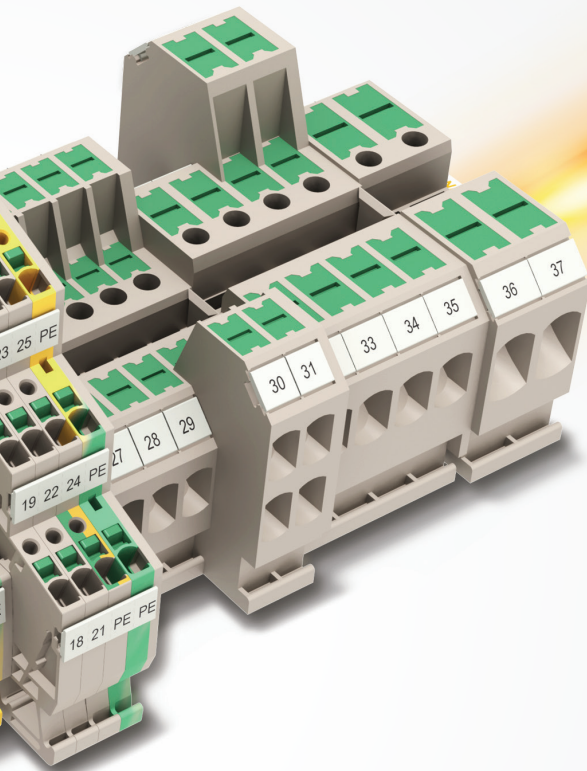
Weidmuller's revolutionary SNAP IN connection technology will take your wiring processes to a whole new level.

## Achieving added value at all stages of panel building

The planning phase is crucial for the success and cost-effectiveness of the entire panel building process, and requires the intelligent interplay of digital product data and interconnected engineering tools.

Efficient, easy wiring is key to installation. Our products stand out in this respect with their intuitive handling and clear design. All terminal functions can be distinguished from each other instantly.

Our Klippon® Connect products feature standardized test points which make automated testing and checking processes possible. In this way, maintenance and testing tasks can be carried out much more safely and faster.



## Quick, Simple and Safe – Just SNAP IN

Your benefits at a glance



Thanks to the self-releasing connection mechanism, the SNAP IN technology can be connected in record time.



Simple and tool-free connection of flexible and fine-stranded conductors even without a wire end ferrule. Simply insert the stripped conductor into the pre-loaded connection point.



Safety you can hear! A clear “click” sound signals the safe and gas-tight connection of the conductor.



With the innovative SNAP IN connection, fully automated wiring processes become reality.



Complete terminal rails can be planned and ordered digitally via the Weidmuller Configurator (WMC) – including accessories.



With our “Fast Delivery Service,” the fully assembled terminal rails are delivered directly to you.

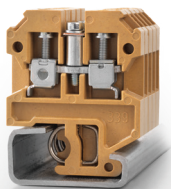
# Pioneers in Industrial Connectivity

Being a pioneer means reinventing yourself time and time again

More than 75 years of experience, several billion connections manufactured and countless hours of development make Weidmuller terminal blocks the safest and most powerful on the market.

## 1948

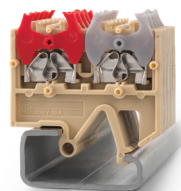
**SAK-Series**



First plastic insulated terminal block

## 1978

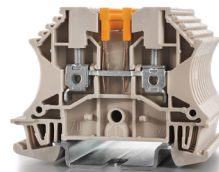
**DSK-Series**



First terminal block with direct plug in technology

## 1983

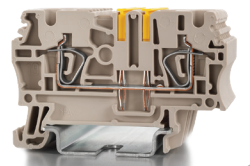
**W-Series**



First terminal block with self-locking clamping yoke technology

## 1993

**Z-Series**



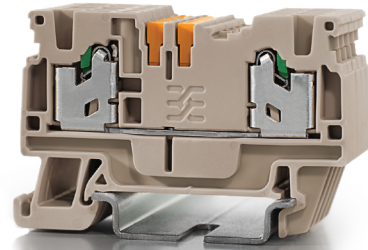
First terminal block from Weidmuller with tension clamp technology



**SNAP IN**

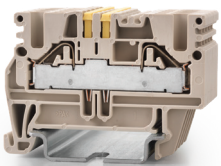
**2022**

**S-Series**



**2004**

**P-Series**



First terminal block family from Weidmuller with PUSH IN technology

**2016**

**A-Series**



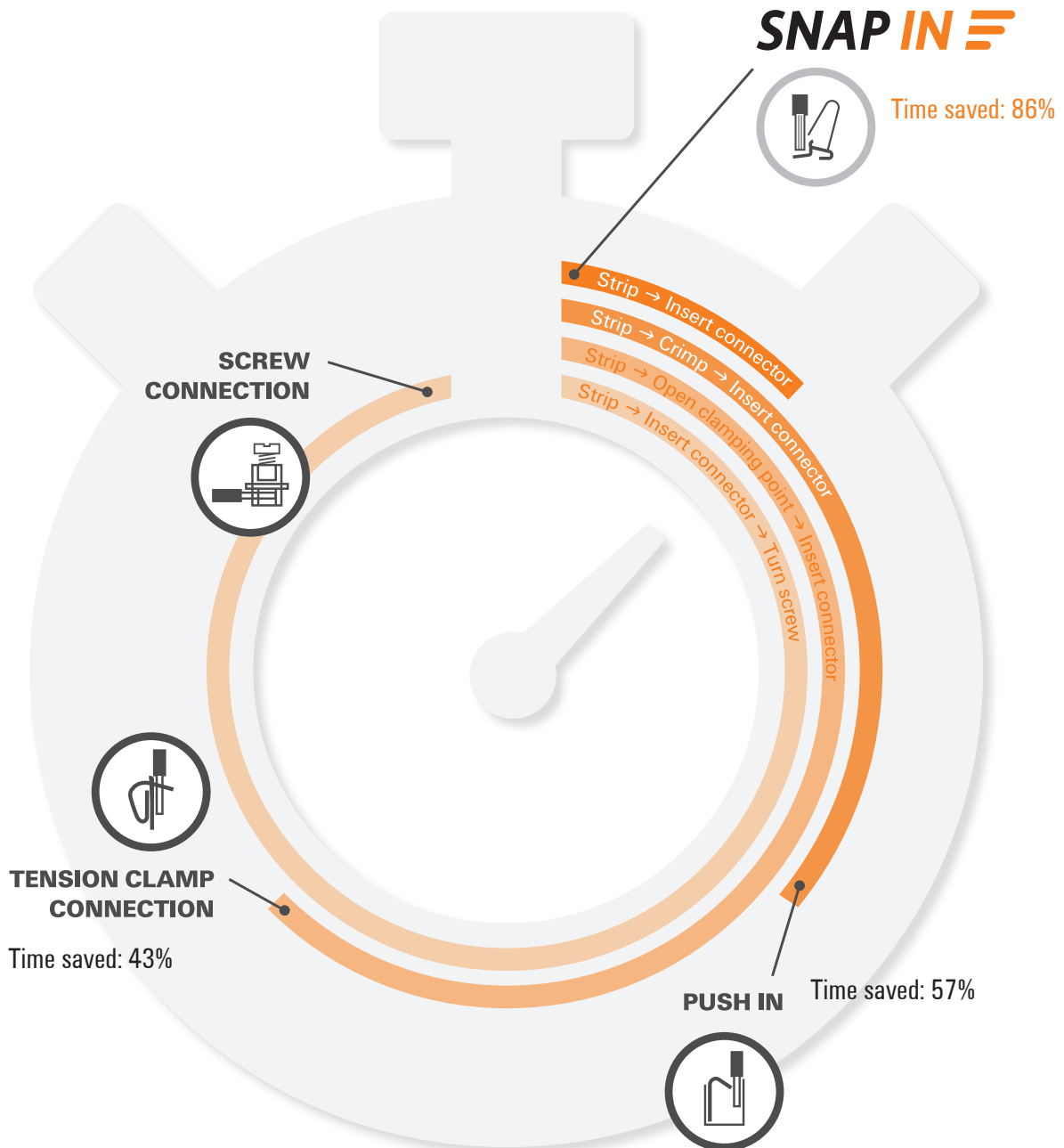
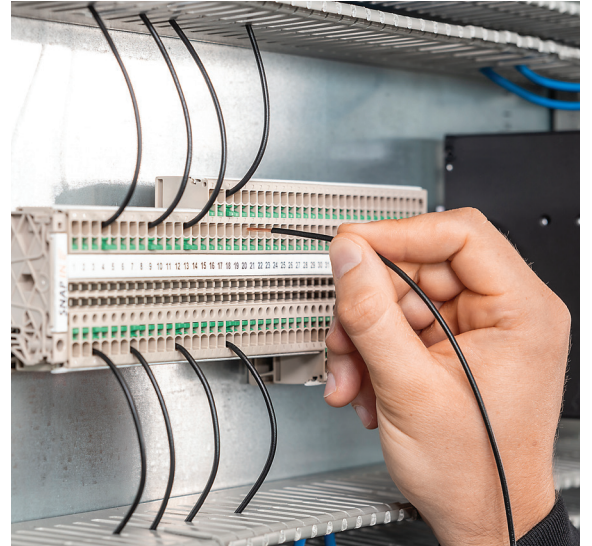
First terminal block family with PUSH IN technology including pushers and application products

**First terminal block family with SNAP IN technology**

# Klippon® Connect with SNAP IN Technology:

## Accelerate your wiring processes

Klippon® Connect terminal blocks with SNAP IN technology revolutionize the wiring of control cabinets with their intuitive and simple handling. The preloaded clamping point allows direct and tool-free wiring of solid and flexible conductors even without ferrules. The reduction of wire preparation speeds up your wiring times and leads to a more efficient installation process.



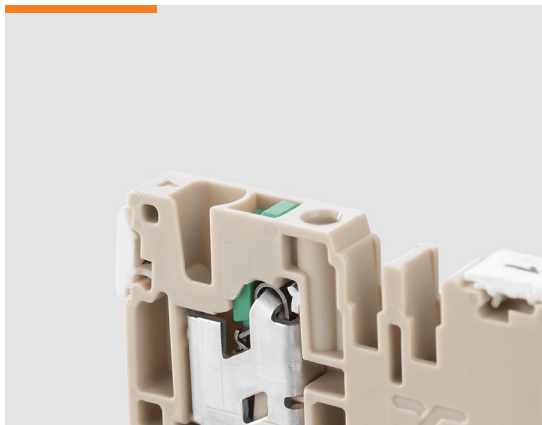
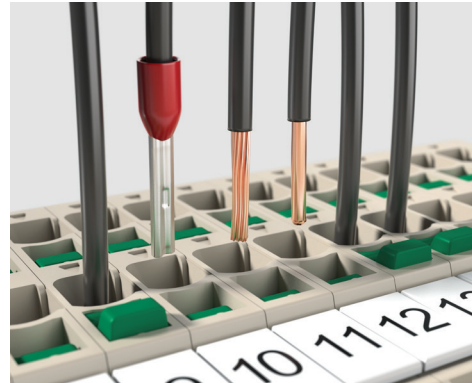
## Klippon® Connect with SNAP IN Technology:

### Guaranteed and safe conductor connection

The pre-tensioned contact point technology allows flexible conductors without wire-end ferrules to be plugged in directly with low insert force. A special tool is not required.

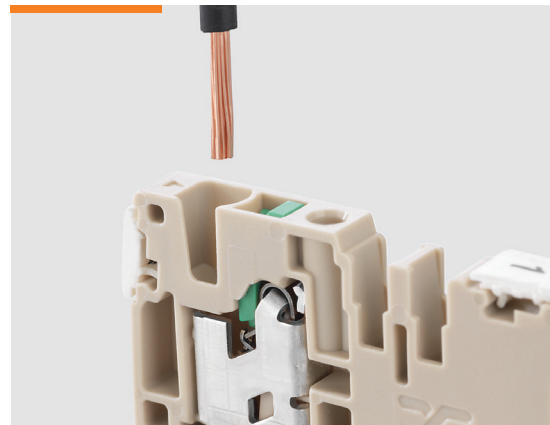
Once the conductor is inserted correctly and deeply enough into the contact point, the contact point is reliably triggered. Reliable contacting of the conductor guarantees that the wire connection is protected against vibration, gas-tight and stable for the long-term.

In addition to the audible "click", the pusher is raised to indicate the secure connection. Klippon® Connect rail-mounted terminal blocks with innovative SNAP IN technology ensure maximum process reliability.



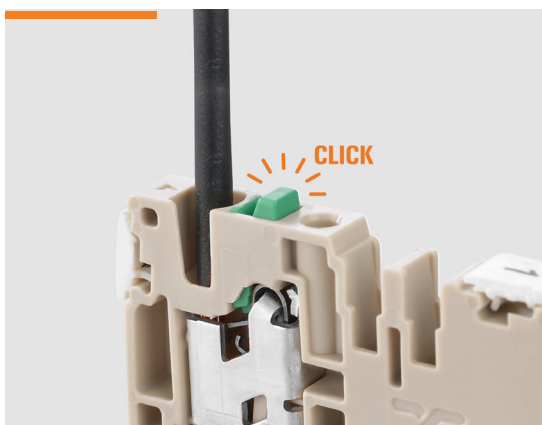
#### Step 1

The terminal blocks are delivered with a pre-loaded spring. The status of the pre-loaded terminal block is signaled by the height position of the pusher.



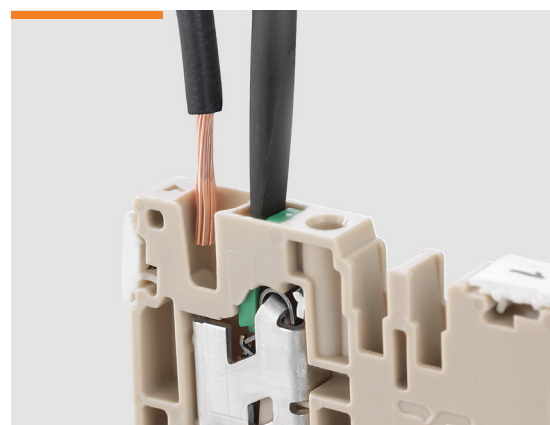
#### Step 2

Stripped wires can be easily and safely inserted into the clamping point without further preparation.



#### Step 3

The conductor is contacted in the clamping point with a clear "click." A raised pusher shows the triggered clamping point.



#### Step 4

By pressing the pusher, the conductor can be quickly and easily released at any time and the clamping point pre-loaded again.

# Klippon® Connect with SNAP IN Technology:

## For the future of automation

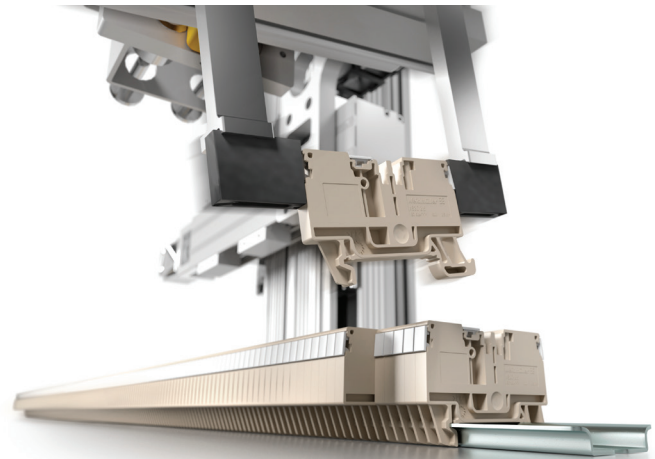
Increasing automation in panel building is presenting new requirements for future terminal blocks. These requirements were already taken into account during the development phase. The optimized design supports a robot-assisted assembly.

Pre-assembled markers in combination with the Klippon® Automated RailLaser enable automated marking of the terminal rail. The open connection point of the S-Series — “ready to wire” — also enables robot-assisted wiring of the terminal rail.

### Automated assembly with Klippon® Automated RailAssembler

With automated production processes, errors can be avoided, workflows accelerated and costs reduced.

This works best with solutions built upon each other and thought through down to the last detail. The contours of the new SNAP IN S-Series terminal blocks have been designed to be easily gripped and mounted by industrial robots. This means there is no obstacle to automated assembly today.



Take a closer look at the Klippon® Automated RailAssembler. Just scan the QR code to watch the video.

#### Ordering data

Type	Order No.
RAILASSEMBLER	2738690000

# Weidmuller's Klippon® Automated RailAssembler and RailLaser: Effective time saving in control cabinet building



## Automated marking with Klippon® Automated RailLaser

Marking terminal blocks is a time-consuming process with a high risk of error. SNAP IN S-Series terminal block design has therefore been optimized for fully automated laser marking, which saves time — up to 90%. The Klippon® Automated RailLaser, in conjunction with the Weidmuller Configurator (WMC), achieves maximum marking quality and error-proofing.



Take a closer look at the Klippon® Automated RailLaser. Just scan the QR code to watch the video.

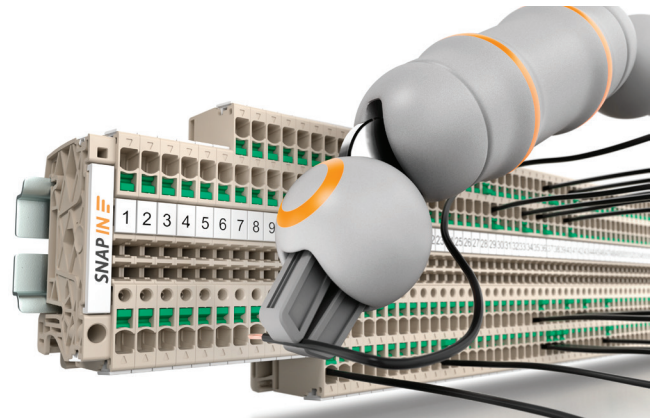


### Ordering data

Type	Order No.
RAILLASER	2705010000

## Automated wiring

Full order books and a growing lack of skilled workers are driving digitalization and automation in control cabinet production. That is why Klippon® Connect SNAP IN terminal blocks are already prepared for tomorrow's automation processes. The simple and safe handling of SNAP IN technology facilitates the use of automated wiring processes and prevents incorrect wiring.

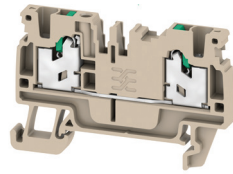


**Spring connection with SNAP IN technology (S-Series)**  
**Feed-through terminal blocks**

**S2C 2.5**

**2.5 mm<sup>2</sup>**

**SNAP IN**



Width/ height/ depth	mm
Max. current / max. cond. cross-section	A/mm <sup>2</sup>
Max. clamping range	mm <sup>2</sup>

5.1 x 59 x 38	
<b>24 / 2.5</b>	
<b>0.34...2.5</b>	

**Technical data**

Rated data	
Rated voltage	V
Rated current	A
For wire cross-section	mm <sup>2</sup>
Short Circuit Current Rating (SCCR)	
Rated impulse withstand voltage / Pollution severity	
Gauge to IEC 60947-1 / UL 94 flammability rating	
Approvals	
Clamped conductors	
Solid / Stranded	mm <sup>2</sup>
Flexible / Flexible with ferrule	mm <sup>2</sup>
Stripping length / Blade size	mm/-
<b>Note</b>	

IEC 60947-7-1

IEC	UL	CSA	EN 60079-7
800	600	600	
24	20	15	
2.5	AWG 22...12	AWG 20...14	
	100kA		
	8 kV / 3		
	A2 / V-0		

CE, c, UL, UK, us, CSA, EN 60079-7

Rated connection	
0.5...2.5 / 0.5...2.5	
0.5...2.5 / 0.34...2.5	
10 / 0.6 x 3.5 mm	

**Note**

**Ordering data**

Version	
dark beige	
blue	
orange	
<b>Note</b>	

**Accessories**

Plug-in cross-connection	
2-pole	
10-pole	
2-pole	
10-pole	
Vertical jumpers	
1-pole	
End plate	
dark beige	
blue	
End bracket	
dark beige, screwable	
dark beige, direct mounting	
Test adapter	
1-pole	
stackable	
3-pole	
5-pole	
Test plug	
Screwdriver	
standard	
Marking tags	
<b>For detailed information on other accessories and applications, visit <a href="http://eshop.weidmueller.com">eshop.weidmueller.com</a></b>	

Type	Qty.	Order No.
S2C 2.5	100	2674530000
S2C 2.5 BL	100	2753940000
S2C 2.5 OR	100	2875120000

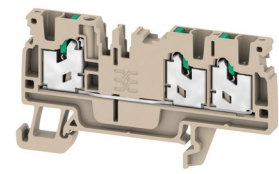
More color options are available. See page 38.

Type	Qty.	Order No.
ZQV 2.5N/2	24 A 60	1527540000
ZQV 2.5N/10	24 A 20	1527690000
SEP 2C 2.5	20	2751080000
AEB 35 SC/1	50	1991920000
AEB 35 SCL/1 V0	20	2661280000
ATPG 1.5-10 L	0.2 A 50	1991890000
ATPG 2.5 MI-R	0.2 A 50	1991960000
ATPG 2.5/3	0.2 A 25	2041190000
ATPG 2.5/5	0.2 A 25	2041180000
PS 2.0 MC	20	0310000000
SDIL 0.6X3.5X100	1	2749140000
DEK 5/5 PLUS MC NE WS	1000	1854490000
DEK 5/5 MM WS	800	2007110000
WS 8/5 MM WS	800	2007150000
WS 10/5 M PLUS MC NE WS	600	2003770000

**S3C 2.5**

**2.5 mm<sup>2</sup>**

**SNAP IN**



5.1 x 71.5 x 38	
<b>24 / 2.5</b>	
<b>0.34...2.5</b>	

IEC 60947-7-1

IEC	UL	CSA	EN 60079-7
800	600	600	
24	20	15	
2.5	AWG 22...12	AWG 20...14	
	100kA		
	8 kV / 3		
	A2 / V-0		

CE, c, UL, UK, us, CSA, EN 60079-7

Rated connection	
0.5...2.5 / 0.5...2.5	
0.5...2.5 / 0.34...2.5	
10 / 0.6 x 3.5 mm	

**Note**

Type	Qty.	Order No.
S3C 2.5	100	2674540000
S3C 2.5 BL	100	2753950000
S3C 2.5 OR	100	2875130000

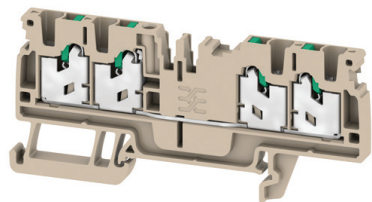
More color options are available. See page 38.

Type	Qty.	Order No.
ZQV 2.5N/2	24 A 60	1527540000
ZQV 2.5N/10	24 A 20	1527690000
SEP 3C 2.5	20	2751090000
AEB 35 SC/1	50	1991920000
AEB 35 SCL/1 V0	20	2661280000
ATPG 1.5-10 L	0.2 A 50	1991890000
ATPG 2.5 MI-R	0.2 A 50	1991960000
ATPG 2.5/3	0.2 A 25	2041190000
ATPG 2.5/5	0.2 A 25	2041180000
PS 2.0 MC	20	0310000000
SDIL 0.6X3.5X100	1	2749140000
DEK 5/5 PLUS MC NE WS	1000	1854490000
DEK 5/5 MM WS	800	2007110000
WS 8/5 MM WS	800	2007150000
WS 10/5 M PLUS MC NE WS	600	2003770000

S4C 2.5

2.5 mm<sup>2</sup>

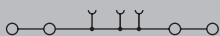
**SNAP IN**



5.1 x 84 x 38

24 / 2.5

0.34...2.5



IEC 60947-7-1

IEC	UL	CSA	EN 60079-7
800	600	600	
24	20	15	
2.5	AWG 22...12	AWG 20...14	
	100kA		
	8 kV / 3		
	A2 / V-0		



**Rated connection**

0.5...2.5 / 0.5...2.5

0.5...2.5 / 0.34...2.5

10 / 0.6 x 3.5 mm

Type	Qty.	Order No.
S4C 2.5	100	2674550000
S4C 2.5 BL	100	2753960000
S4C 2.5 OR	100	2875140000

More color options are available. See page 38.

Type	Qty.	Order No.
ZQV 2.5N/2	24 A 60	1527540000
ZQV 2.5N/10	24 A 20	1527690000

SEP 4C 2.5	20	2751100000
------------	----	------------

AEB 35 SC/1	50	1991920000
AEB 35 SCL/1 V0	20	2661280000

ATPG 1.5-10 L	0.2 A 50	1991890000
ATPG 2.5 MI-R	0.2 A 50	1991960000
ATPG 2.5/3	0.2 A 25	2041190000
ATPG 2.5/5	0.2 A 25	2041180000

PS 2.0 MC	20	0310000000
-----------	----	------------

SDIL 0.6X3.5X100	1	2749140000
------------------	---	------------

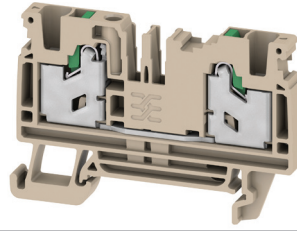
DEK 5/5 PLUS MC NE WS	1000	1854490000
DEK 5/5 MM WS	800	2007110000
WS 8/5 MM WS	800	2007150000
WS 10/5 M PLUS MC NE WS	600	2003770000

**Spring connection with SNAP IN technology (S-Series)**  
**Feed-through terminal blocks**

**S2C 4**

**4 mm<sup>2</sup>**

**SNAP IN**



Width/ height/ depth	mm
Max. current / max. cond. cross-section	A/mm <sup>2</sup>
Max. clamping range	mm <sup>2</sup>

6.1 x 62 x 41.5  
**32 / 4**  
**0.75...4**



**Technical data**

Rated data	
Rated voltage	V
Rated current	A
For wire cross-section	mm <sup>2</sup>
Short Circuit Current Rating (SCCR)	
Rated impulse withstand voltage / Pollution severity	
Gauge to IEC 60947-1 / UL 94 flammability rating	
Approvals	
Clamped conductors	
Solid / Stranded	mm <sup>2</sup>
Flexible / Flexible with ferrule	mm <sup>2</sup>
Stripping length / Blade size	mm/-
<b>Note</b>	

IEC 60947-1

IEC	UL	CSA	EN 60079-7
1000	600		
32	30		
4	AWG 20...10		
	100kA		
	8 kV / 3		
	A4 / V-0		



Rated connection	
0.75...4 / 0.75...4	
0.75...4 / 0.75...4	
12 / 0.6 x 3.5 mm	

**Ordering data**

Version	
dark beige	
blue	
orange	
<b>Note</b>	

**Accessories**

Plug-in cross-connection	
2-pole	
10-pole	
2-pole	
10-pole	
Vertical jumpers	
1-pole	
End plate	
dark beige	
blue	
End bracket	
dark beige, screwable	
dark beige, direct mounting	
Test adapter	
1-pole	
stackable	
3-pole	
5-pole	
Test plug	
Screwdriver	
standard	
Marking tags	
<b>For detailed information on other accessories and applications, visit <a href="http://eshop.weidmueller.com">eshop.weidmueller.com</a></b>	

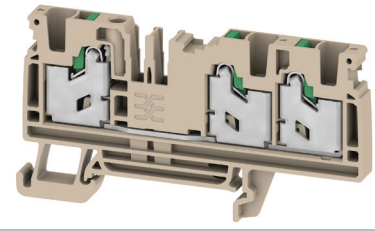
Type	Qty.	Order No.
S2C 4	50	2874820000
S2C 4 BL	50	2874830000
S2C 4 OR	50	3023540000
More color options are available. See page 38.		

Type	Qty.	Order No.
ZQV 4N/2	32 A 60	1527930000
ZQV 4N/10	32 A 20	1528090000
SEP 2C 4	20	2874790000
AEB 35 SC/1	50	1991920000
AEB 35 SCL/1 V0	20	2661280000
ATPG 1.5-10 L	0.2 A 50	1991890000
ATPG 4 MI-R	0.2 A 50	1991860000
PS 2.0 MC	20	0310000000
SDIL 0.6X3.5X100	1	2749140000
WS 10/6 M PLUS MC NE WS	600	2003780000
WS 8/6 MM WS	600	2007160000
DEK 5/6 MM WS	600	2007120000
DEK 5/6 PLUS MC NE WS	1000	1011320000

**S3C 4**

**4 mm<sup>2</sup>**

**SNAP IN**



Width/ height/ depth	mm
Max. current / max. cond. cross-section	A/mm <sup>2</sup>
Max. clamping range	mm <sup>2</sup>

6.1 x 78 x 41.5  
**32 / 4**  
**0.75...4**



IEC 60947-1

IEC	UL	CSA	EN 60079-7
1000	600		
32	30		
4	AWG 20...10		
	100kA		
	8 kV / 3		
	A4 / V-0		



Rated connection	
0.75...4 / 0.75...4	
0.75...4 / 0.75...4	
12 / 0.6 x 3.5 mm	

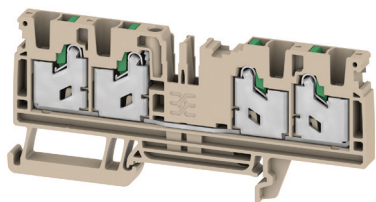
Type	Qty.	Order No.
S3C 4	50	2874840000
S3C 4 BL	50	2874850000
S3C 4 OR	50	3023550000
More color options are available. See page 38.		

Type	Qty.	Order No.
ZQV 4N/2	32 A 60	1527930000
ZQV 4N/10	32 A 20	1528090000
SEP 3C 4	20	2874800000
AEB 35 SC/1	50	1991920000
AEB 35 SCL/1 V0	20	2661280000
ATPG 1.5-10 L	0.2 A 50	1991890000
ATPG 4 MI-R	0.2 A 50	1991860000
PS 2.0 MC	20	0310000000
SDIL 0.6X3.5X100	1	2749140000
WS 10/6 M PLUS MC NE WS	600	2003780000
WS 8/6 MM WS	600	2007160000
DEK 5/6 MM WS	600	2007120000
DEK 5/6 PLUS MC NE WS	1000	1011320000

S4C 4

4 mm<sup>2</sup>

**SNAP IN**



6.1 x 94 x 41.5

32 / 4

0.75...4



IEC 60947-7-1

IEC	UL	CSA	EN 60079-7
1000	600		
32	30		
4	AWG 20...10		
	100kA		
	8 kV / 3		
	A4 / V-0		



**Rated connection**

0.75...4 / 0.75...4

0.75...4 / 0.75...4

12 / 0.6 x 3.5 mm

Type	Qty.	Order No.
S4C 4	50	2874860000
S4C 4 BL	50	2874870000
S4C 4 OR	50	3023560000

More color options are available. See page 38.

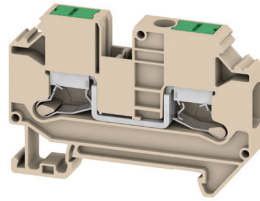
Type	Qty.	Order No.
ZQV 4N/2	32 A 60	1527930000
ZQV 4N/10	32 A 20	1528090000
SEP 4C 4	20	2874810000
AEB 35 SC/1	50	1991920000
AEB 35 SCL/1 V0	20	2661280000
ATPG 1.5-10 L	0.2 A 50	1991890000
ATPG 4 MI-R	0.2 A 50	1991860000
PS 2.0 MC	20	0310000000
SDIL 0.6X3.5X100	1	2749140000
WS 10/6 M PLUS MC NE WS	600	2003780000
WS 8/6 MM WS	600	2007160000
DEK 5/6 MM WS	600	2007120000
DEK 5/6 PLUS MC NE WS	1000	1011320000

**Spring connection with SNAP IN technology (S-Series)**  
**Feed-through terminal blocks**

**SL2C 6**

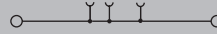
**6 mm<sup>2</sup>**

**SNAP IN**



Width/ height/ depth	mm
Max. current / max. cond. cross-section	A/mm <sup>2</sup>
Max. clamping range	mm <sup>2</sup>

8.2 x 42.2 x 62.8  
**41 / 10**  
**1.5...10**



**Technical data**

Rated data	
Rated voltage	V
Rated current	A
For wire cross-section	mm <sup>2</sup>
Short Circuit Current Rating (SCCR)	
Rated impulse withstand voltage / Pollution severity	
Gauge to IEC 60947-1 / UL 94 flammability rating	
Approvals	
Clamped conductors	
Solid / Stranded	mm <sup>2</sup>
Flexible / Flexible with ferrule	mm <sup>2</sup>
Stripping length / Blade size	mm/-
Note	

**Ordering data**

Version	
	dark beige
	blue
Note	

**Accessories**

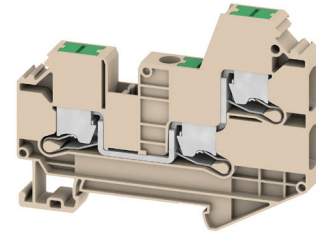
<b>Plug-in cross-connection</b>	
	2-pole
	3-pole
	4-pole
<b>End plate</b>	
	dark beige
<b>End bracket</b>	
	dark beige, screwable
	dark beige, direct mounting
<b>Test adapter</b>	
	1-pole
	stackable
<b>Test plug</b>	
<b>Screwdriver</b>	
	standard
<b>Marking tags</b>	

For detailed information on other accessories and applications, visit [eshop.weidmueller.com](http://eshop.weidmueller.com)

**SL3C 6**

**6 mm<sup>2</sup>**

**SNAP IN**



8.2 x 57.6 x 76.7  
**41 / 10**  
**1.5...10**



IEC 60947-7-1

IEC	UL	CSA	EN 60079-7
1000	600	600	
41	40	40	
6	AWG 14...8	AWG 14...8	
10kA			
8 kV / 3			
A5 / V-0			

CE cUL US CCC

**Rated connection**

1.5...10 / 1.5...10  
 1.5...10 / 1.5...6  
 12 / 1.0 x 5.5 mm

Type	Qty.	Order No.
SL3C 6	50	3037410000
SL3C 6 BL	50	3037420000

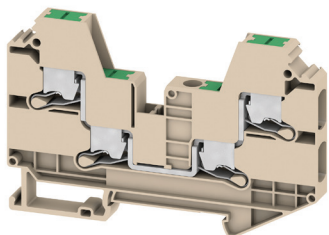
Type	Qty.	Order No.
ZQV 6SL/2	41 A 60	3077580000
ZQV 6SL/3	41 A 60	3077590000
ZQV 6SL/4	41 A 60	3077600000
SLEP 3C 6	50	3037600000
AEB 35 SC/1	50	1991920000
AEB 35 SCL/1 V0	20	2661280000
ATPG 1.5-10 L	0.2 A 50	1991890000
ATPG 6 MI-R	0.2 A 50	1991930000
PS 2.0 MC	20	0310000000
SDIL 1.0X5.5X125	1	2749160000
DEK-A 5/8 MM WS	500	2448860000
WS-A 8/8 MM WS	500	2448930000
DEK 5/8 PLUS MC NE WS	800	1046350000
WS 10/8 PLUS MC NE WS	420	1905950000

For detailed information on other accessories and applications, visit [eshop.weidmueller.com](http://eshop.weidmueller.com)

SL4C 6

6 mm<sup>2</sup>

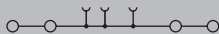
**SNAP IN**



8.2 x 57.6 x 90.6

41 / 10

1.5...10



IEC 60947-7-1

IEC	UL	CSA	EN 60079-7
1000	600	600	
41	40	40	
6	AWG 14...8	AWG 14...8	
	10kA		
	8 kV / 3		
	A5 / V-0		



**Rated connection**

1.5...10 / 1.5...10

1.5...10 / 1.5...6

12 / 1.0 x 5.5 mm

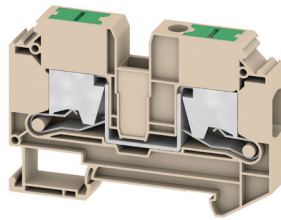
Type	Qty.	Order No.
SL4C 6	50	3037440000
SL4C 6 BL	50	3037450000

Type	Qty.	Order No.	
ZQV 6SL/2	41 A	60	3077580000
ZQV 6SL/3	41 A	60	3077590000
ZQV 6SL/4	41 A	60	3077600000
SLEP 4C 6	50	3037640000	
AEB 35 SC/1	50	1991920000	
AEB 35 SCL/1 V0	20	2661280000	
ATPG 1.5-10 L	0.2 A	50	1991890000
ATPG 6 MI-R	0.2 A	50	1991930000
PS 2.0 MC	20	0310000000	
SDIL 1.0X5.5X125	1	2749160000	
DEK-A 5/8 MM WS	500	2448860000	
WS-A 8/8 MM WS	500	2448930000	
DEK 5/8 PLUS MC NE WS	800	1046350000	
WS 10/8 PLUS MC NE WS	420	1905950000	

**Spring connection with SNAP IN technology (S-Series)**  
**Feed-through terminal blocks**

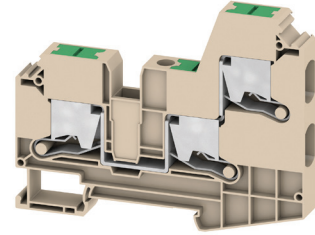
**SL2C 10** **10 mm<sup>2</sup>**

**SNAP IN**



**SL3C 10** **10 mm<sup>2</sup>**

**SNAP IN**



Width/ height/ depth	mm
Max. current / max. cond. cross-section	A/mm <sup>2</sup>
Max. clamping range	mm <sup>2</sup>

10.2 x 72 x 48.8
<b>57 / 16</b>
<b>1.5...16</b>

10,2 x 68,5 x 89,1
<b>57 / 16</b>
<b>1.5...16</b>

**Technical data**

Rated data	
Rated voltage	V
Rated current	A
For wire cross-section	mm <sup>2</sup>
Short Circuit Current Rating (SCCR)	
Rated impulse withstand voltage / Pollution severity	
Gauge to IEC 60947-1 / UL 94 flammability rating	
Approvals	
Clamped conductors	
Solid / Stranded	mm <sup>2</sup>
Flexible / Flexible with ferrule	mm <sup>2</sup>
Stripping length / Blade size	mm/-
<b>Note</b>	

IEC 60947-7-1				
IEC	UL	CSA	EN 60079-7	
1000	600	600		
57	55	55		
10	AWG 12...6	AWG 12...6		
			10kA	
			8 kV / 3	
			A6 / V-0	
Rated connection				
1.5...16 / 1.5...16				
2.5...16 / 2.5...10				
18 / 1.0 x 5.5 mm				
<b>Note</b>				

IEC 60947-7-1				
IEC	UL	CSA	EN 60079-7	
1000	600	600		
57	55	55		
10	AWG 12...6	AWG 12...6		
			10kA	
			8 kV / 3	
			A6 / V-0	
Rated connection				
1.5...16 / 1.5...16				
2.5...16 / 2.5...10				
18 / 1.0 x 5.5 mm				
<b>Note</b>				

**Ordering data**

Version	
	dark beige
	blue
<b>Note</b>	

Type	Qty.	Order No.
SL2C 10	25	<b>3037500000</b>
SL2C 10 BL	25	<b>3037510000</b>
<b>Note</b>		

Type	Qty.	Order No.
SL3C 10	25	<b>3037530000</b>
SL3C 10 BL	25	<b>3037540000</b>
<b>Note</b>		

**Accessories**

Plug-in cross-connection	
	2-pole
	3-pole
	4-pole
End plate	
	dark beige
End bracket	
	dark beige, screwable
	dark beige, direct mounting
Test adapter	
	1-pole stackable
Test plug	
Screwdriver	
	standard
Marking tags	

Type	Qty.	Order No.
ZQV 10N/2	57 A 25	<b>2497250000</b>
SLEP 2C 10	20	<b>3037650000</b>
AEB 35 SC/1	50	<b>1991920000</b>
AEB 35 SCL/1 V0	20	<b>2661280000</b>
ATPG 1.5-10 L	0.2 A 50	<b>1991890000</b>
ATPG 6 MI-R	0.2 A 50	<b>1991930000</b>
PS 2.0 MC	20	<b>0310000000</b>
SDIL 1.0X5.5X125	1	<b>2749160000</b>
DEK-A 5/8 MM WS	500	<b>2448860000</b>
WS-A 8/8 MM WS	500	<b>2448930000</b>
DEK 5/8 PLUS MC NE WS	800	<b>1046350000</b>
WS 10/8 PLUS MC NE WS	420	<b>1905950000</b>

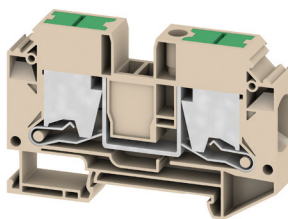
Type	Qty.	Order No.
ZQV 10N/2	57 A 25	<b>2497250000</b>
SLEP 3C 10	20	<b>3037670000</b>
AEB 35 SC/1	50	<b>1991920000</b>
AEB 35 SCL/1 V0	20	<b>2661280000</b>
ATPG 1.5-10 L	0.2 A 50	<b>1991890000</b>
ATPG 6 MI-R	0.2 A 50	<b>1991930000</b>
PS 2.0 MC	20	<b>0310000000</b>
SDIL 1.0X5.5X125	1	<b>2749160000</b>
DEK-A 5/8 MM WS	500	<b>2448860000</b>
WS-A 8/8 MM WS	500	<b>2448930000</b>
DEK 5/8 PLUS MC NE WS	800	<b>1046350000</b>
WS 10/8 PLUS MC NE WS	420	<b>1905950000</b>

For detailed information on other accessories and applications, visit [eshop.weidmueller.com](http://eshop.weidmueller.com)

SL2C 16

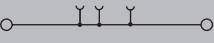
16 mm<sup>2</sup>

**SNAP IN**



Width/ height/ depth	mm
Max. current / max. cond. cross-section	A/mm <sup>2</sup>
Max. clamping range	mm <sup>2</sup>

12,2 x 49,8 x 77,2
<b>76 / 25</b>
<b>2.5...25</b>



**Technical data**

Rated data	
Rated voltage	V
Rated current	A
For wire cross-section	mm <sup>2</sup>
Short Circuit Current Rating (SCCR)	
Rated impulse withstand voltage / Pollution severity	
Gauge to IEC 60947-1 / UL 94 flammability rating	
Approvals	
Clamped conductors	
Solid / Stranded	mm <sup>2</sup>
Flexible / Flexible with ferrule	mm <sup>2</sup>
Stripping length / Blade size	mm/-
Note	

IEC 60947-1

IEC	UL	CSA	EN 60079-7
1000	600	600	
76	75	75	
16	AWG 10...4	AWG 10...4	
	10kA		
	8 kV / 3		
	A7 / V-0		

CE cRU US

Rated connection	
2.5...25 / 2.5...25	
4...25 / 2.5...16	
18 / 1.0 x 5.5 mm	

**Ordering data**

Version	
	dark beige
	blue
Note	

Type	Qty.	Order No.
SL2C 16	20	3037560000
SL2C 16 BL	20	3037570000

**Accessories**

Plug-in cross-connection	
	2-pole
	3-pole
	4-pole
End plate	
	dark beige
End bracket	
	dark beige, screwable
	dark beige, direct mounting
Test adapter	
	1-pole stackable
Test plug	
Screwdriver	
	standard
Marking tags	

Type	Qty.	Order No.
ZQV 16N/2	76 A 25	2497290000
SLEP 2C 16	20	3037680000
AEB 35 SC/1	50	1991920000
AEB 35 SCL/1 V0	20	2661280000
ATPG 1.5-10 L	0.2 A 50	1991890000
ATPG 6 MI-R	0.2 A 50	1991930000
PS 2.0 MC	20	0310000000
SDIL 1.0X5.5X125	1	2749160000
DEK-A 5/8 MM WS	500	2448860000
WS-A 8/8 MM WS	500	2448930000
DEK 5/8 PLUS MC NE WS	800	1046350000
WS 10/8 PLUS MC NE WS	420	1905950000

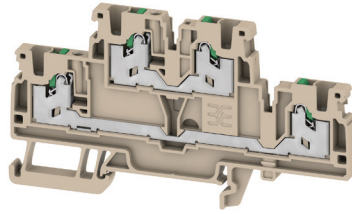
For detailed information on other accessories and applications, visit [eshop.weidmueller.com](http://eshop.weidmueller.com)

**Spring connection with SNAP IN technology (S-Series)**  
**Feed-through terminal blocks**

**S2T 2.5**

**2.5 mm<sup>2</sup>**

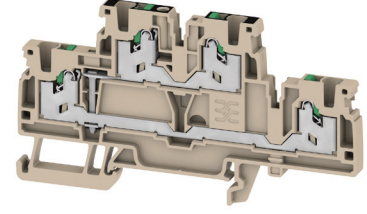
**SNAP IN**



**S2T 2.5 VL**

**2.5 mm<sup>2</sup>**

**SNAP IN**



Width/ height/ depth	mm
Max. current / max. cond. cross-section	A/mm <sup>2</sup>
Max. clamping range	mm <sup>2</sup>

5.1 x 95 x 52	
<b>22 / 2.5</b>	
<b>0.34...2.5</b>	

5.1 x 95 x 52	
<b>24 / 2.5</b>	
<b>0.34...2.5</b>	

**Technical data**

Rated data	
Rated voltage	V
Rated current	A
For wire cross-section	mm <sup>2</sup>
Short Circuit Current Rating (SCCR)	
Rated impulse withstand voltage / Pollution severity	
Gauge to IEC 60947-1 / UL 94 flammability rating	
Approvals	
Clamped conductors	
Solid / Stranded	mm <sup>2</sup>
Flexible / Flexible with ferrule	mm <sup>2</sup>
Stripping length / Blade size	mm/-
Note	

IEC 60947-7-1			
IEC	UL	CSA	EN 60079-7
800	600		
22	20		
2.5	AWG 22...12		
	100kA		
	8 kV / 3		
	A2 / V-0		
Rated connection			
0.5...2.5 / 0.5...2.5			
0.5...2.5 / 0.5...2.5			
10 / 0.6 x 3.5 mm			
Note			

IEC 60947-7-1			
IEC	UL	CSA	EN 60079-7
800	600		
22	20		
2.5	AWG 22...12		
	100kA		
	8 kV / 3		
	A2 / V-0		
Rated connection			
0.5...2.5 / 0.5...2.5			
0.5...2.5 / 0.5...2.5			
10 / 0.6 x 3.5 mm			
Note			

**Ordering data**

Version	
dark beige	
blue	
orange	
Note	

Type	Qty.	Order No.
S2T 2.5	50	2902380000
S2T 2.5 BL	50	2902390000
S2T 2.5 OR	50	2902400000
Note		

Type	Qty.	Order No.
S2T 2.5 VL	50	2902430000
S2T 2.5 VL BL	50	2902440000
S2T 2.5 VL OR	50	2902450000
Note		

**Accessories**

Plug-in cross-connection	
2-pole	
10-pole	
2-pole	
10-pole	
Vertical jumpers	
1-pole	
End plate	
dark beige	
blue	
End bracket	
dark beige, screwable	
dark beige, direct mounting	
Test adapter	
1-pole	
stackable	
3-pole	
5-pole	
Test plug	
Screwdriver	
standard	
Marking tags	
For detailed information on other accessories and applications, visit <a href="http://eshop.weidmueller.com">eshop.weidmueller.com</a>	

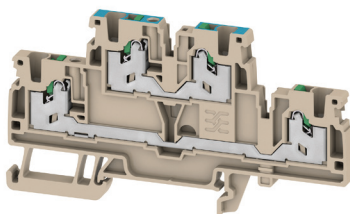
Type	Qty.	Order No.
ZQV 2.5N/2	24 A 60	1527540000
ZQV 2.5N/10	24 A 20	1527690000
ZVQ 2.5/1.5	24 A 50	1720700000
SEP 2T 2.5	20	2913480000
SEP 2T 2.5 BL	20	2913490000
AEB 35 SC/1	50	1991920000
AEB 35 SCL/1 V0	20	2661280000
ATPG 1.5-10 L	0.2 A 50	1991890000
ATPG 2.5 MI-R	0.2 A 50	1991960000
ATPG 2.5/3	0.2 A 25	2041190000
ATPG 2.5/5	0.2 A 25	2041180000
PS 2.0 MC	20	0310000000
SDIL 0.6X3.5X100	1	2749140000
DEK 5/5 PLUS MC NE WS	1000	1854490000
DEK 5/5 MM WS	800	2007110000
WS 8/5 MM WS	800	2007150000
WS 10/5 M PLUS MC NE WS	600	2003770000
SNAPMARK I	50	1805880000
Note		

Type	Qty.	Order No.
ZQV 2.5N/2	24 A 60	1527540000
ZQV 2.5N/10	24 A 20	1527690000
ZVQ 2.5/1.5	24 A 50	1720700000
SEP 2T 2.5	20	2913480000
SEP 2T 2.5 BL	20	2913490000
AEB 35 SC/1	50	1991920000
AEB 35 SCL/1 V0	20	2661280000
ATPG 1.5-10 L	0.2 A 50	1991890000
ATPG 2.5 MI-R	0.2 A 50	1991960000
ATPG 2.5/3	0.2 A 25	2041190000
ATPG 2.5/5	0.2 A 25	2041180000
PS 2.0 MC	20	0310000000
SDIL 0.6X3.5X100	1	2749140000
DEK 5/5 PLUS MC NE WS	1000	1854490000
DEK 5/5 MM WS	800	2007110000
WS 8/5 MM WS	800	2007150000
WS 10/5 M PLUS MC NE WS	600	2003770000
SNAPMARK I	50	1805880000
Note		

**S2T 2.5 N-FT**

**2.5 mm<sup>2</sup>**

**SNAP IN**



Width/ height/ depth	mm
Max. current / max. cond. cross-section	A/mm <sup>2</sup>
Max. clamping range	mm <sup>2</sup>

5.1 x 95 x 52	
<b>22 / 2.5</b>	
<b>0.34...2.5</b>	

**Technical data**

Rated data	
Rated voltage	V
Rated current	A
For wire cross-section	mm <sup>2</sup>
Short Circuit Current Rating (SCCR)	
Rated impulse withstand voltage / Pollution severity	
Gauge to IEC 60947-1 / UL 94 flammability rating	
Approvals	
Clamped conductors	
Solid / Stranded	mm <sup>2</sup>
Flexible / Flexible with ferrule	mm <sup>2</sup>
Stripping length / Blade size	mm/-
<b>Note</b>	

IEC 60947-1				
IEC	UL	CSA	EN 60079-7	
800	600			
22	20			
2.5	AWG 22...12			
	100kA			
	8 kV / 3			
	A2 / V-0			
Rated connection				
0.5...2.5 / 0.5...2.5				
0.5...2.5 / 0.5...2.5				
10 / 0.6 x 3.5 mm				
<b>Note</b>				

**Ordering data**

Version	
dark beige	
blue	
orange	
<b>Note</b>	

**Accessories**

Plug-in cross-connection	
2-pole	
10-pole	
2-pole	
10-pole	
Vertical jumpers	
1-pole	
End plate	
dark beige	
blue	
End bracket	
dark beige, screwable	
dark beige, direct mounting	
Test adapter	
1-pole	
stackable	
3-pole	
5-pole	
Test plug	
Screwdriver	
standard	
Marking tags	
<b>For detailed information on other accessories and applications, visit <a href="http://eshop.weidmueller.com">eshop.weidmueller.com</a></b>	

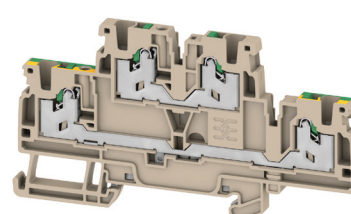
Type	Qty.	Order No.
S2T 2.5 N-FT	50	2902420000
<b>Note</b>		

Type	Qty.	Order No.
ZQV 2.5N/2	24 A 60	1527540000
ZQV 2.5N/10	24 A 20	1527690000
<b>Note</b>		
ZVQ 2.5/1.5	24 A 50	1720700000
SEP 2T 2.5	20	2913480000
SEP 2T 2.5 BL	20	2913490000
AEB 35 SC/1	50	1991920000
AEB 35 SCL/1 V0	20	2661280000
ATPG 1.5-10 L	0,2 A 50	1991890000
ATPG 2.5 MI-R	0,2 A 50	1991960000
ATPG 2.5/3	0,2 A 25	2041190000
ATPG 2.5/5	0,2 A 25	2041180000
PS 2.0 MC	20	0310000000
SDIL 0.6X3.5X100	1	2749140000
DEK 5/5 PLUS MC NE WS	1000	1854490000
DEK 5/5 MM WS	800	2007110000
WS 8/5 MM WS	800	2007150000
WS 10/5 M PLUS MC NE WS	600	2003770000
SNAPMARK I	50	1805880000
<b>Note</b>		

**S2T 2.5 FT-PE**

**2.5 mm<sup>2</sup>**

**SNAP IN**



5.1 x 95 x 52	
<b>24 / 2.5</b>	
<b>0.34...2.5</b>	

IEC 60947-1, IEC 60947-2				
IEC	UL	CSA	EN 60079-7	
800	600			
24	20			
2.5	AWG 22...12			
	100kA			
	8 kV / 3			
	A2 / V-0			
Rated connection				
0.5...2.5 / 0.5...2.5				
0.5...2.5 / 0.5...2.5				
10 / 0.6 x 3.5 mm				
<b>Note</b>				

Type	Qty.	Order No.
S2T 2.5 FT-PE	50	2902410000
<b>Note</b>		

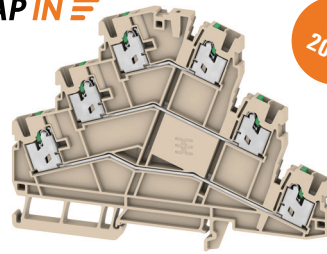
Type	Qty.	Order No.
ZQV 2.5N/2	24 A 60	1527540000
ZQV 2.5N/10	24 A 20	1527690000
<b>Note</b>		
SEP 2T 2.5	20	2913480000
SEP 2T 2.5 BL	20	2913490000
AEB 35 SC/1	50	1991920000
AEB 35 SCL/1 V0	20	2661280000
ATPG 1.5-10 L	0.2 A 50	1991890000
ATPG 2.5 MI-R	0.2 A 50	1991960000
ATPG 2.5/3	0.2 A 25	2041190000
ATPG 2.5/5	0.2 A 25	2041180000
PS 2.0 MC	20	0310000000
SDIL 0.6X3.5X100	1	2749140000
DEK 5/5 PLUS MC NE WS	1000	1854490000
DEK 5/5 MM WS	800	2007110000
WS 8/5 MM WS	800	2007150000
WS 10/5 M PLUS MC NE WS	600	2003770000
SNAPMARK I	50	1805880000
<b>Note</b>		

**Spring connection with SNAP IN technology (S-Series)**  
**Feed-through terminal blocks**

**S3T 2.5**

**2.5 mm<sup>2</sup>**

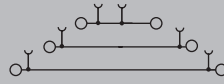
**SNAP IN**



0.3  
2025

Width/ height/ depth	mm
Max. current / max. cond. cross-section	A/mm <sup>2</sup>
Max. clamping range	mm <sup>2</sup>

5.1 x 116 x 64.5  
**22 / 2.5**  
**0.34...2.5**



**Technical data**

Rated data	
Rated voltage	V
Rated current	A
For wire cross-section	mm <sup>2</sup>
Short Circuit Current Rating (SCCR)	
Rated impulse withstand voltage / Pollution severity	
Gauge to IEC 60947-1 / UL 94 flammability rating	
Approvals	
Clamped conductors	
Solid / Stranded	mm <sup>2</sup>
Flexible / Flexible with ferrule	mm <sup>2</sup>
Stripping length / Blade size	mm/-
<b>Note</b>	

IEC	UL	CSA	EN 60079-7
800			
22			
2.5			
	10kA		
	8 kV / 3		
	A3 / V-0		
<b>CE</b>			
Rated connection			
0.5...2.5 / 0.5...2.5			
0.5...2.5 / 0.5...2.5			
10 / 0.6 x 3.5 mm			
<b>Note</b>			

**Ordering data**

Version	
dark beige	
blue	
orange	
<b>Note</b>	

Type	Qty.	Order No.
S3T 2.5		2902530000
S3T 2.5 BL		2902540000
<b>Note</b>		

**Accessories**

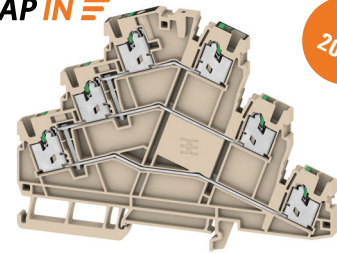
Plug-in cross-connection	
2-pole	
10-pole	
2-pole	
10-pole	
Vertical jumpers	
1-pole	
End plate	
dark beige	
blue	
End bracket	
dark beige, screwable	
dark beige, direct mounting	
Test adapter	
1-pole	
stackable	
3-pole	
5-pole	
Test plug	
<b>Screwdriver</b>	
standard	
Marking tags	
<b>For detailed information on other accessories and applications, visit <a href="http://eshop.weidmueller.com">eshop.weidmueller.com</a></b>	

Type	Qty.	Order No.
ZVQ 2.5N/2	24 A 60	1527540000
ZVQ 2.5N/10	24 A 20	1527690000
<b>ZVQ 2.5/1.5</b>		
ZVQ 2.5/1.5	24 A 50	1720700000
<b>SEP 3T 2.5</b>		
SEP 3T 2.5		2902630000
SEP 3T 2.5 BL		2902640000
<b>AEB 35 SC/1</b>		
AEB 35 SC/1	50	1991920000
AEB 35 SCL/1 VO	20	2661280000
<b>ATPG 1.5-10 L</b>		
ATPG 1.5-10 L	0.2 A 50	1991890000
ATPG 2.5 MI-R	0.2 A 50	1991960000
ATPG 2.5/3	0.2 A 25	2041190000
ATPG 2.5/5	0.2 A 25	2041180000
<b>PS 2.0 MC</b>		
PS 2.0 MC	20	0310000000
<b>SDIL 0.6X3.5X100</b>		
SDIL 0.6X3.5X100	1	2749140000
<b>DEK 5/5 PLUS MC NE WS</b>		
DEK 5/5 PLUS MC NE WS	1000	1854490000
DEK 5/5 MM WS	800	2007110000
WS 8/5 MM WS	800	2007150000
WS 10/5 M PLUS MC NE WS	600	2003770000
SNAPMARK I	50	1805880000
<b>Note</b>		

**S3T 2.5 VL**

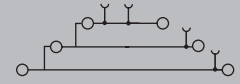
**2.5 mm<sup>2</sup>**

**SNAP IN**



0.3  
2025

5.1 x 116 x 64.5  
**24 / 2.5**  
**0.34...2.5**



IEC 60947-7-1

IEC	UL	CSA	EN 60079-7
800			
24			
2.5			
	10kA		
	8 kV / 3		
	A3 / V-0		
<b>CE</b>			
Rated connection			
0.5...2.5 / 0.5...2.5			
0.5...2.5 / 0.5...2.5			
10 / 0.6 x 3.5 mm			
<b>Note</b>			

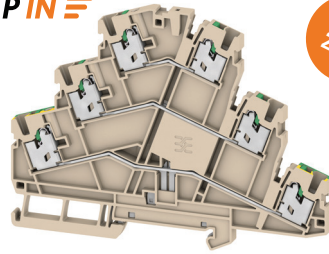
Type	Qty.	Order No.
S3T 2.5 VL		2902570000
S3T 2.5 VL BL		2902580000
<b>Note</b>		

Type	Qty.	Order No.
ZVQ 2.5N/2	24 A 60	1527540000
ZVQ 2.5N/10	24 A 20	1527690000
<b>ZVQ 2.5/1.5</b>		
ZVQ 2.5/1.5	24 A 50	1720700000
<b>SEP 3T 2.5</b>		
SEP 3T 2.5		2902630000
SEP 3T 2.5 BL		2902640000
<b>AEB 35 SC/1</b>		
AEB 35 SC/1	50	1991920000
AEB 35 SCL/1 VO	20	2661280000
<b>ATPG 1.5-10 L</b>		
ATPG 1.5-10 L	0.2 A 50	1991890000
ATPG 2.5 MI-R	0.2 A 50	1991960000
ATPG 2.5/3	0.2 A 25	2041190000
ATPG 2.5/5	0.2 A 25	2041180000
<b>PS 2.0 MC</b>		
PS 2.0 MC	20	0310000000
<b>SDIL 0.6X3.5X100</b>		
SDIL 0.6X3.5X100	1	2749140000
<b>DEK 5/5 PLUS MC NE WS</b>		
DEK 5/5 PLUS MC NE WS	1000	1854490000
DEK 5/5 MM WS	800	2007110000
WS 8/5 MM WS	800	2007150000
WS 10/5 M PLUS MC NE WS	600	2003770000
SNAPMARK I	50	1805880000
<b>Note</b>		

**S3T 2.5 FT-FT-PE**

**2.5 mm<sup>2</sup>**

**SNAP IN**

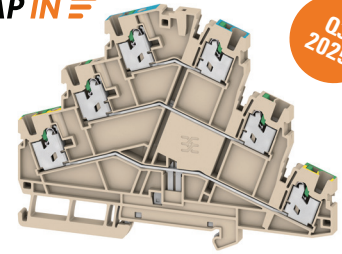


**Q3  
2025**

**S3T 2.5 N-FT-PE**

**2.5 mm<sup>2</sup>**

**SNAP IN**



**Q3  
2025**

Width/ height/ depth	mm
Max. current / max. cond. cross-section	A/mm <sup>2</sup>
Max. clamping range	mm <sup>2</sup>

**Technical data**

Rated data	
Rated voltage	V
Rated current	A
For wire cross-section	mm <sup>2</sup>
Short Circuit Current Rating (SCCR)	
Rated impulse withstand voltage / Pollution severity	
Gauge to IEC 60947-1 / UL 94 flammability rating	
Approvals	
Clamped conductors	
Solid / Stranded	mm <sup>2</sup>
Flexible / Flexible with ferrule	mm <sup>2</sup>
Stripping length / Blade size	mm/-
<b>Note</b>	

**Ordering data**

Version	
dark beige	
blue	
orange	
<b>Note</b>	

**Accessories**

Plug-in cross-connection	
	2-pole
	10-pole
	2-pole
	10-pole
Vertical jumpers	
	1-pole
End plate	
	dark beige
	blue
End bracket	
	dark beige, screwable
	dark beige, direct mounting
Test adapter	
	1-pole
	stackable
	3-pole
	5-pole
Test plug	
Screwdriver	
	standard
Marking tags	

For detailed information on other accessories and applications, visit [eshop.weidmueller.com](http://eshop.weidmueller.com)

5.1 x 116 x 64.5	
<b>24 / 2.5</b>	
<b>0.34...2.5</b>	

IEC 60947-7-1 (-7-2)			
IEC	UL	CSA	EN 60079-7
800			
24			
2.5			
	10kA		
	6 kV / 3		
	A3 / V-0		
<b>CE</b>			
Rated connection			
0.5...2.5 / 0.5...2.5			
0.5...2.5 / 0.5...2.5			
10 / 0.6 x 3.5 mm			
<b>Note</b>			

Type	Qty.	Order No.
S3T 2.5 FT-FT-PE		<b>2902550000</b>

Type	Qty.	Order No.
ZQV 2.5N/2	24 A 60	<b>1527540000</b>
ZQV 2.5N/10	24 A 20	<b>1527690000</b>
ZVQ 2.5/1.5	24 A 50	<b>1720700000</b>
SEP 3T 2.5		<b>2902630000</b>
SEP 3T 2.5 BL		<b>2902640000</b>
AEB 35 SC/1	50	<b>1991920000</b>
AEB 35 SCL/1 V0	20	<b>2661280000</b>
ATPG 1.5-10 L	0.2 A 50	<b>1991890000</b>
ATPG 2.5 MI-R	0.2 A 50	<b>1991960000</b>
ATPG 2.5/3	0.2 A 25	<b>2041190000</b>
ATPG 2.5/5	0.2 A 25	<b>2041180000</b>
PS 2.0 MC	20	<b>0310000000</b>
SDIL 0.6X3.5X100	1	<b>2749140000</b>
DEK 5/5 PLUS MC NE WS	1000	<b>1854490000</b>
DEK 5/5 MM WS	800	<b>2007110000</b>
WS 8/5 MM WS	800	<b>2007150000</b>
WS 10/5 M PLUS MC NE WS	600	<b>2003770000</b>
SNAPMARK I	50	<b>1805880000</b>

5.1 x 116 x 64.5	
<b>24 / 2.5</b>	
<b>0.34...2.5</b>	

IEC 60947-7-1 (-7-2)			
IEC	UL	CSA	EN 60079-7
800			
24			
2.5			
	10kA		
	8 kV / 3		
	A3 / V-0		
<b>CE</b>			
Rated connection			
0.5...2.5 / 0.5...2.5			
0.5...2.5 / 0.5...2.5			
10 / 0.6 x 3.5 mm			
<b>Note</b>			

Type	Qty.	Order No.
S3T 2.5 N-FT-PE		<b>2902560000</b>

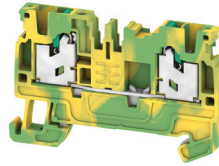
Type	Qty.	Order No.
ZQV 2.5N/2	24 A 60	<b>1527540000</b>
ZQV 2.5N/10	24 A 20	<b>1527690000</b>
ZVQ 2.5/1.5	24 A 50	<b>1720700000</b>
SEP 3T 2.5		<b>2902630000</b>
SEP 3T 2.5 BL		<b>2902640000</b>
AEB 35 SC/1	50	<b>1991920000</b>
AEB 35 SCL/1 V0	20	<b>2661280000</b>
ATPG 1.5-10 L	0.2 A 50	<b>1991890000</b>
ATPG 2.5 MI-R	0.2 A 50	<b>1991960000</b>
ATPG 2.5/3	0.2 A 25	<b>2041190000</b>
ATPG 2.5/5	0.2 A 25	<b>2041180000</b>
PS 2.0 MC	20	<b>0310000000</b>
SDIL 0.6X3.5X100	1	<b>2749140000</b>
DEK 5/5 PLUS MC NE WS	1000	<b>1854490000</b>
DEK 5/5 MM WS	800	<b>2007110000</b>
WS 8/5 MM WS	800	<b>2007150000</b>
WS 10/5 M PLUS MC NE WS	600	<b>2003770000</b>
SNAPMARK I	50	<b>1805880000</b>

Spring connection with SNAP IN technology (S-Series)  
PE terminal blocks

S2C 2.5 PE

2.5 mm<sup>2</sup>

**SNAP IN**



Width/ height/ depth	mm
Max. current / max. cond. cross-section	-/mm <sup>2</sup>
Max. clamping range	mm <sup>2</sup>

5.1 x 59 x 38  
/ 2.5  
0.34...2.5



**Technical data**

Rated data	
For wire cross-section	mm <sup>2</sup>
Rated voltage to adjoining terminal	V
Rated impulse withstand voltage to adjacent terminal	kV
Short Circuit Current Rating (SCCR)	
Rated short-time current	
Pollution severity	
Gauge to IEC 60947-1 / UL 94 flammability rating	
Approvals	
Clamped conductors	
Solid / Stranded	mm <sup>2</sup>
Flexible / Flexible with ferrule	mm <sup>2</sup>
Stripping length / Blade size	mm/-

**Note**

**Ordering data**

Version	
	green/yellow
Note	

**Accessories**

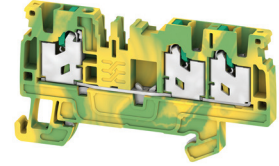
End plate	
	dark beige blue
End bracket	
	dark beige, screwable dark beige, direct mounting
Test adapter	
	1-pole stackable 3-pole 5-pole
Test plug	
Screwdriver	
	standard
Marking tags	

For detailed information on other accessories and applications, visit [eshop.weidmueller.com](http://eshop.weidmueller.com)

S3C 2.5 PE

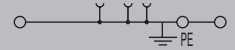
2.5 mm<sup>2</sup>

**SNAP IN**



Width/ height/ depth	mm
Max. current / max. cond. cross-section	-/mm <sup>2</sup>
Max. clamping range	mm <sup>2</sup>

5.1 x 71.5 x 38  
/ 2.5  
0.34...2.5



IEC 60947-7-2

IEC	UL	CSA	EN 60079-7
2.5	AWG 22...12	AWG 20...14	
800			
8			
	100kA		
	300 A (2.5 mm <sup>2</sup> )		
	3		
	A2 / V-0		



**Rated connection**

0.5...2.5 / 0.5...2.5
0.5...2.5 / 0.34...2.5
10 / 0.6 x 3.5 mm

Note	

Type	Qty.	Order No.
S3C 2.5 PE	50	2674570000
Note		

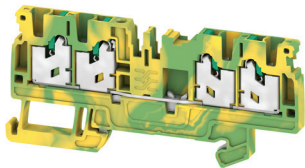
Type	Qty.	Order No.
SEP 3C 2.5	20	2751090000
AEB 35 SC/1	50	1991920000
AEB 35 SCL/1 V0	20	2661280000
ATPG 1.5-10 L	0.2 A 50	1991890000
ATPG 2.5 MI-R	0.2 A 50	1991960000
ATPG 2.5/3	0.2 A 25	2041190000
ATPG 2.5/5	0.2 A 25	2041180000
PS 2.0 MC	20	0310000000
SDIL 0.6X3.5X100	1	2749140000
DEK 5/5 PLUS MC NE WS	1000	1854490000
DEK 5/5 MM WS	800	2007110000
WS 8/5 MM WS	800	2007150000
WS 10/5 M PLUS MC NE WS	600	2003770000

For detailed information on other accessories and applications, visit [eshop.weidmueller.com](http://eshop.weidmueller.com)

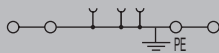
S4C 2.5 PE

2.5 mm<sup>2</sup>

**SNAP IN**



5.1 x 84 x 38  
/ 2.5  
0.34...2.5



IEC 60947-7-2

IEC	UL	CSA	EN 60079-7
2.5	AWG 22...12	AWG 20...14	
800			
8			
	100kA		
	300 A (2.5 mm <sup>2</sup> )		
	3		
	A2 / V-0		



**Rated connection**

0.5...2.5 / 0.5...2.5

0.5...2.5 / 0.34...2.5

10 / 0.6 x 3.5 mm

Type	Qty.	Order No.
S4C 2.5 PE	50	2674580000

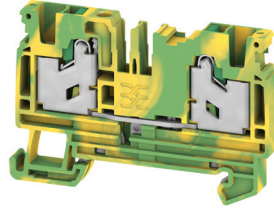
Type	Qty.	Order No.
SEP 4C 2.5	20	2751100000
AEB 35 SC/1	50	1991920000
AEB 35 SCL/1 VO	20	2661280000
ATPG 1.5-10 L	0.2 A 50	1991890000
ATPG 2.5 MI-R	0.2 A 50	1991960000
ATPG 2.5/3	0.2 A 25	2041190000
ATPG 2.5/5	0.2 A 25	2041180000
PS 2.0 MC	20	0310000000
SDIL 0.6X3.5X100	1	2749140000
DEK 5/5 PLUS MC NE WS	1000	1854490000
DEK 5/5 MM WS	800	2007110000
WS 8/5 MM WS	800	2007150000
WS 10/5 M PLUS MC NE WS	600	2003770000

Spring connection with SNAP IN technology (S-Series)  
PE terminal blocks

S2C 4 PE

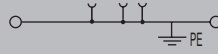
4 mm<sup>2</sup>

SNAP IN



Width/ height/ depth	mm
Max. current / max. cond. cross-section	-/mm <sup>2</sup>
Max. clamping range	mm <sup>2</sup>

6.1 x 62 x 41.5  
/ 4  
0.75...4



Technical data

Rated data	
For wire cross-section	mm <sup>2</sup>
Rated voltage to adjoining terminal	V
Rated impulse withstand voltage to adjacent terminal	kV
Short Circuit Current Rating (SCCR)	
Rated short-time current	
Pollution severity	
Gauge to IEC 60947-1 / UL 94 flammability rating	
Approvals	
Clamped conductors	
Solid / Stranded	mm <sup>2</sup>
Flexible / Flexible with ferrule	mm <sup>2</sup>
Stripping length / Blade size	mm/-

Note

Ordering data

Version	
	green/yellow
Note	

Accessories

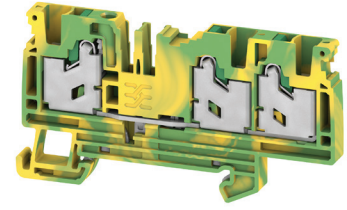
End plate	
	dark beige blue
End bracket	
	dark beige, screwable dark beige, direct mounting
Test adapter	
	1-pole stackable 3-pole 5-pole
Test plug	
Screwdriver	
	standard
Marking tags	

For detailed information on other accessories and applications, visit [eshop.weidmueller.com](http://eshop.weidmueller.com)

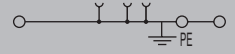
S3C 4 PE

4 mm<sup>2</sup>

SNAP IN



6.1 x 78 x 41.5  
/ 4  
0.75...4



IEC 60947-7-2

IEC	UL	CSA	EN 60079-7
4	AWG 20...10		
1000			
8			
	100kA		
	480 A (4 mm <sup>2</sup> )		
	3		
	A4 / V-0		

CE, UK, US, CSA, SCCR

Rated connection

0.75...4 / 0.75...4  
0.75...4 / 0.75...4  
12 / 0.6 x 3.5 mm

Note

Type	Qty.	Order No.
S3C 4 PE	50	2874890000
Note		

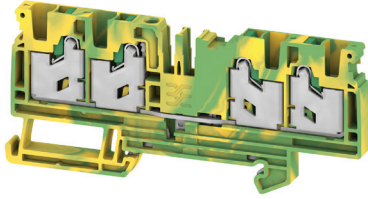
Type	Qty.	Order No.
SEP 3C 4	20	2874800000
AEB 35 SC/1	50	1991920000
AEB 35 SCL/1 V0	20	2661280000
ATPG 1.5-10 L	0.2 A 50	1991890000
ATPG 2.5 M-R	0.2 A 50	1991960000
PS 2.0 MC	20	0310000000
SDIL 0.6X3.5X100	1	2749140000
DEK 5/5 PLUS MC NE WS	1000	1854490000
DEK 5/5 MM WS	800	2007110000
WS 8/5 MM WS	800	2007150000
WS 10/5 M PLUS MC NE WS	600	2003770000

For detailed information on other accessories and applications, visit [eshop.weidmueller.com](http://eshop.weidmueller.com)

S4C 4 PE

4 mm<sup>2</sup>

**SNAP IN**



6.1 x 94 x 41.5

/ 4

0.75...4



IEC 60947-7-2

IEC	UL	CSA	EN 60079-7
4	AWG 20...10		
1000			
8			
	100kA		
	480 A (4 mm <sup>2</sup> )		
	3		
	A4 / V-0		

CE, UK, US, CCC

**Rated connection**

0.75...4 / 0.75...4

0.75...4 / 0.75...4

12 / 0.6 x 3.5 mm

Type	Qty.	Order No.
S4C 4 PE	50	2874900000

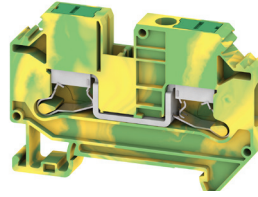
Type	Qty.	Order No.	
SEP 4C 4	20	2874810000	
AEB 35 SC/1	50	1991920000	
AEB 35 SCL/1 V0	20	2661280000	
ATPG 1.5-10 L	0.2 A	50	1991890000
ATPG 4 MI-R	0.2 A	50	1991860000
PS 2.0 MC	20	0310000000	
SDIL 0.6X3.5X100	1	2749140000	
WS 10/6 M PLUS MC NE WS	600	2003780000	
WS 8/6 MM WS	600	2007160000	
DEK 5/6 MM WS	600	2007120000	
DEK 5/6 PLUS MC NE WS	1000	1011320000	

Spring connection with SNAP IN technology (S-Series)  
PE terminal blocks

SL2C 6 PE

6 mm<sup>2</sup>

**SNAP IN**



Width/ height/ depth	mm
Max. current / max. cond. cross-section	-/mm <sup>2</sup>
Max. clamping range	mm <sup>2</sup>

10.2 x 72 x 48.8  
/ 16  
1.5...16



**Technical data**

Rated data	
For wire cross-section	mm <sup>2</sup>
Rated voltage to adjoining terminal	V
Rated impulse withstand voltage to adjacent terminal	kV
Short Circuit Current Rating (SCCR)	
Rated short-time current	
Pollution severity	
Gauge to IEC 60947-1 / UL 94 flammability rating	
Approvals	
Clamped conductors	
Solid / Stranded	mm <sup>2</sup>
Flexible / Flexible with ferrule	mm <sup>2</sup>
Stripping length / Blade size	mm/-

**Note**

**Ordering data**

Version	
	green/yellow
Note	

**Accessories**

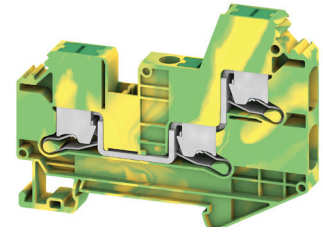
End plate	
	dark beige
	blue
End bracket	
	dark beige, screwable
	dark beige, direct mounting
Test adapter	
	1-pole
	stackable
	3-pole
	5-pole
Test plug	
Screwdriver	
	standard
Marking tags	

For detailed information on other accessories and applications, visit [eshop.weidmueller.com](http://eshop.weidmueller.com)

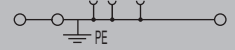
SL3C 6 PE

6 mm<sup>2</sup>

**SNAP IN**



8.2 x 57.6 x 76.7  
/ 10  
1.5...10



IEC 60947-7-2

IEC	UL	CSA	EN 60079-7
6	AWG 14...8	AWG 14...8	
1000			
8			
	10kA		
	720 A (6 mm <sup>2</sup> )		
	3		
	A5 / V-0		

CE eRU US SCS

Rated connection	
	1.5...10 / 1.5...10
	1.5...10 / 1.5...6
	12 / 1.0 x 5.5 mm

**Note**

Type	Qty.	Order No.
SL3C 6 PE	50	3037430000
Note		

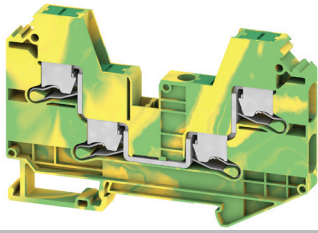
Type	Qty.	Order No.	
SLEP 3C 6	50	3037600000	
AEB 35 SC/1	50	1991920000	
AEB 35 SCL/1 V0	20	2661280000	
ATPG 1.5-10 L	0.2 A	50	1991890000
ATPG 6 MI-R	0.2 A	50	1991930000
PS 2.0 MC	20	0310000000	
SDIL 1.0X5.5X125	1	2749160000	
DEK-A 5/8 MM WS	500	2448860000	
WS-A 8/8 MM WS	500	2448930000	
DEK 5/8 PLUS MC NE WS	800	1046350000	
WS 10/8 PLUS MC NE WS	420	1905950000	

For detailed information on other accessories and applications, visit [eshop.weidmueller.com](http://eshop.weidmueller.com)

SL4C 6 PE

6 mm<sup>2</sup>

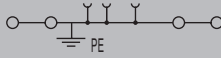
**SNAP IN**



8.2 x 57.6 x 90.6

/ 10

1.5...10



IEC 60947-7-2

IEC	UL	CSA	EN 60079-7
6	AWG 14...8	AWG 14...8	
1000			
8			
	10A		
	720 A (6 mm <sup>2</sup> )		
	3		
	A5 / V-0		

CE

**Rated connection**

1.5...10 / 1.5..10

1.5...10 / 1.5..6

12 / 1.0 x 5.5 mm

Type	Qty.	Order No.
SL4C 6 PE	50	3037460000

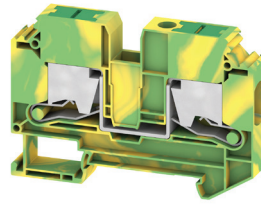
Type	Qty.	Order No.
SLEP 4C 6	50	3037640000
AEB 35 SC/1	50	1991920000
AEB 35 SCL/1 VO	20	2661280000
ATPG 1.5-10 L	0.2 A 50	1991890000
ATPG 6 MI-R	0.2 A 50	1991930000
PS 2.0 MC	20	0310000000
SDIL 1.0X5.5X125	1	2749160000
DEK-A 5/8 MM WS	500	2448860000
WS-A 8/8 MM WS	500	2448930000
DEK 5/8 PLUS MC NE WS	800	1046350000
WS 10/8 PLUS MC NE WS	420	1905950000

**Spring connection with SNAP IN technology (S-Series)  
PE terminal blocks**

**SL2C 10 PE**

**10 mm<sup>2</sup>**

**SNAP IN**



Width/ height/ depth	mm
Max. current / max. cond. cross-section	-/mm <sup>2</sup>
Max. clamping range	mm <sup>2</sup>

10.2 x 72 x 48.8
/ 16
1.5...16

**Technical data**

Rated data	
For wire cross-section	mm <sup>2</sup>
Rated voltage to adjoining terminal	V
Rated impulse withstand voltage to adjacent terminal	kV
Short Circuit Current Rating (SCCR)	
Rated short-time current	
Pollution severity	
Gauge to IEC 60947-1 / UL 94 flammability rating	
Approvals	
Clamped conductors	
Solid / Stranded	mm <sup>2</sup>
Flexible / Flexible with ferrule	mm <sup>2</sup>
Stripping length / Blade size	mm/-

**Note**

**Ordering data**

Version	Qty.	Order No.
green/yellow	25	3037520000

**Note**

**Accessories**

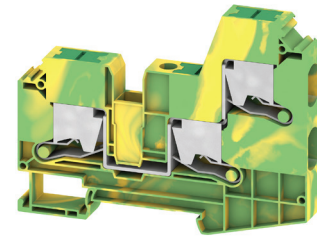
Type	Qty.	Order No.
<b>End plate</b> dark beige blue	20	3037650000
<b>End bracket</b> dark beige, screwable dark beige, direct mounting	50	1991920000
	20	2661280000
<b>Test adapter</b> 1-pole stackable 3-pole 5-pole	0.2 A 50	1991890000
<b>Test plug</b>	20	0310000000
<b>Screwdriver</b> standard	1	2749160000
<b>Marking tags</b>	1000	1854490000
	800	1046350000
	420	1905950000

For detailed information on other accessories and applications, visit [eshop.weidmueller.com](http://eshop.weidmueller.com)

**SL3C 10 PE**

**10 mm<sup>2</sup>**

**SNAP IN**



10.2 x 68.5 x 89.1
/ 16
1.5...16

IEC 60947-7-2			
IEC	UL	CSA	EN 60079-7
10	AWG 12...6	AWG 12...6	
1000			
8			
	10kA		
	1200 A (10 mm <sup>2</sup> )		
	3		
	A6 / V-0		

Rated connection	
1.5...16 / 1.5...16	
2.5...16 / 2.5...10	
18 / 1.0 x 5.5 mm	

**Note**

Type	Qty.	Order No.
SL3C 10 PE	25	3037550000

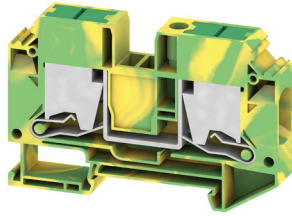
Type	Qty.	Order No.
<b>End plate</b> SLEP 3C 10	20	3037670000
<b>End bracket</b> AEB 35 SC/1 AEB 35 SCL/1 V0	50	1991920000
	20	2661280000
<b>Test adapter</b> ATPG 1.5-10 L	0.2 A 50	1991890000
<b>Test plug</b> PS 2.0 MC	20	0310000000
<b>Screwdriver</b> SDIL 1.0X5.5X125	1	2749160000
<b>Marking tags</b> DEK 5/5 PLUS MC NE WS	1000	1854490000
	800	1046350000
	420	1905950000

For detailed information on other accessories and applications, visit [eshop.weidmueller.com](http://eshop.weidmueller.com)

SL2C 16 PE

16 mm<sup>2</sup>

**SNAP IN**



12.2 x 49.8 x 77.2

/ 25

2.5...25



IEC 60947-7-2

IEC	UL	CSA	EN 60079-7
16	AWG 10...4	AWG 10...4	
1000			
8			
	10kA		
	1920 A (16 mm <sup>2</sup> )		
	3		
	A7 / V-0		

CE cULus

Rated connection

2.5...25 / 2.5...25

4...25 / 2.5...16

18 / 1.0 x 5.5 mm

Type	Qty.	Order No.
SL2C 16 PE	20	3037580000

Type	Qty.	Order No.
SLEP 2C 16	20	3037680000
AEB 35 SC/1	50	1991920000
AEB 35 SCL/1 V0	20	2661280000
ATPG 1.5-10 L	0.2 A 50	1991890000
PS 2.0 MC	20	0310000000
SDIL 1.0X5.5X125	1	2749160000
DEK 5/5 PLUS MC NE WS	1000	1854490000
WS-A 8/12 MM WS	300	2619900000
DEK 5/8 PLUS MC NE WS	800	1046350000
WS 10/8 PLUS MC NE WS	420	1905950000

**Spring connection with SNAP IN technology (S-Series)  
PE terminals blocks**

Width/ height/ depth	mm
Max. current / max. cond. cross-section	-/mm <sup>2</sup>
Max. clamping range	mm <sup>2</sup>

**Technical data**

Rated data	
For wire cross-section	mm <sup>2</sup>
Rated voltage to adjoining terminal	V
Rated impulse withstand voltage to adjacent terminal	kV
Short Circuit Current Rating (SCCR)	
Rated short-time current	
Pollution severity	
Gauge to IEC 60947-1 / UL 94 flammability rating	
Approvals	

Clamped conductors	
Solid / Stranded	mm <sup>2</sup>
Flexible / Flexible with ferrule	mm <sup>2</sup>
Stripping length / Blade size	mm/-

**Note**

**Ordering data**

Version
green/yellow

**Note**

**Accessories**

End plate
dark beige
blue

End bracket
dark beige, screwable
dark beige, direct mounting

Test adapter
1-pole
stackable
3-pole
5-pole

Test plug

Screwdriver
standard

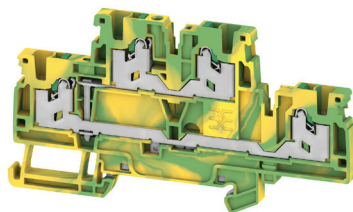
Marking tags

For detailed information on other accessories and applications, visit [eshop.weidmueller.com](http://eshop.weidmueller.com)

**S2T 2.5 PE**

**2.5 mm<sup>2</sup>**

**SNAP IN**



5.1 x 95 x 52	
/ 2.5	
<b>0.34...2.5</b>	

IEC 60947-7-2			
IEC	UL	CSA	EN 60079-7
2.5	AWG 22...12		
800			
6			
	100kA		
	300 A (2.5 mm <sup>2</sup> )		
	3		
	A2 / V-0		

Rated connection	
0.5...2.5 / 0.5...2.5	
0.5...2.5 / 0.5...2.5	
10 / 0.6 x 3.5 mm	

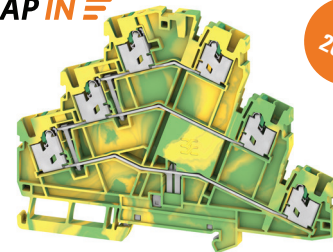
Type	Qty.	Order No.
S2T 2.5 PE	50	<b>2902460000</b>

Type	Qty.	Order No.
SEP 2T 2.5	20	<b>2913480000</b>
AEB 35 SC/1	50	<b>1991920000</b>
AEB 35 SC/1 V0	20	<b>2661280000</b>
ATPG 1.5-10 L	0.2 A	50 <b>1991890000</b>
ATPG 2.5 M-R	0.2 A	50 <b>1991960000</b>
PS 2.0 MC	20	<b>0310000000</b>
SDIL 0.6X3.5X100	1	<b>2749140000</b>
DEK 5/5 PLUS MC NE WS	1000	<b>1854490000</b>
DEK 5/5 MM WS	800	<b>2007110000</b>
WS 8/5 MM WS	800	<b>2007150000</b>
WS 10/5 M PLUS MC NE WS	600	<b>2003770000</b>
SNAPMARK I	50	<b>1805880000</b>

**S3T 2.5 PE**

**2.5 mm<sup>2</sup>**

**SNAP IN**



**Q3  
2025**

5.1 x 116 x 64.5	
/ 2.5	
<b>0.34...2.5</b>	

IEC 60947-7-2			
IEC	UL	CSA	EN 60079-7
2.5			
800			
8			
	10kA		
	3		
	A3 / V-0		

Rated connection	
0.5...2.5 / 0.5...2.5	
0.5...2.5 / 0.5...2.5	
10 / 0.6 x 3.5 mm	

Type	Qty.	Order No.
S3T 2.5 PE		<b>2902590000</b>

Type	Qty.	Order No.
SEP 3T 2.5		<b>2902630000</b>
SEP 3T 2.5 BL		<b>2902640000</b>
AEB 35 SC/1	50	<b>1991920000</b>
AEB 35 SC/1 V0	20	<b>2661280000</b>
ATPG 1.5-10 L	0.2 A	50 <b>1991890000</b>
ATPG 2.5 M-R	0.2 A	50 <b>1991960000</b>
PS 2.0 MC	20	<b>0310000000</b>
SDIL 0.6X3.5X100	1	<b>2749140000</b>
DEK 5/5 PLUS MC NE WS	1000	<b>1854490000</b>
DEK 5/5 MM WS	800	<b>2007110000</b>
WS 8/5 MM WS	800	<b>2007150000</b>
WS 10/5 M PLUS MC NE WS	600	<b>2003770000</b>
SNAPMARK I	50	<b>1805880000</b>

For detailed information on other accessories and applications, visit [eshop.weidmueller.com](http://eshop.weidmueller.com)

SFS 4 2C BK

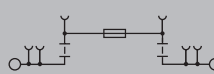
4 mm<sup>2</sup>

**SNAP IN**



Width/ height/ depth	mm
Max. current / max. cond. cross-section	A/mm <sup>2</sup>
Max. clamping range	mm <sup>2</sup>

6.1 x 67.7 x 79.1  
**6.3 / 4**  
**0.75..4**



### Technical data

Rated data	
Rated voltage to adjoining terminal	V
Rated current	A
For wire cross-section	mm <sup>2</sup>
Short Circuit Current Rating (SCCR)	
Rated impulse withstand voltage / Pollution severity	
Gauge to IEC 60947-1 / UL 94 flammability rating	
Approvals	
Clamped conductors	
Solid / Stranded	mm <sup>2</sup>
Flexible / Flexible with ferrule	mm <sup>2</sup>
Stripping length / Blade size	

IEC	UL	CSA	EN 60079-7
500	150 (C) 300 (B, D)		
6.3	10 (C, B, D)		
4	AWG 20...10		
	10kA		
	4 kV / 3		
	A4 / V-0		

Rated connection	
0.75..4 / 0.75..4	
0.75..4 / 0.75..4	
12 / 0.6 x 3.5 mm	

Note

### Ordering data

Version	
500 V AC/DC, without LED	
10-36 V AC/DC, with LED	
30-70 V AC/DC, with LED	
60-150 V AC/DC, with LED	
100 - 250 V AC/DC, with LED	

Note

Type	Qty.	Order No.
SFS 4 2C BK		2941480000
SFS 4 2C 10-36V BK		2941490000
SFS 4 2C 30-70V BK		2941500000
SFS 4 2C 60-150V BK		2941510000
SFS 4 2C 100-250V BK		2941520000

### Accessories

Plug-in cross-connection	
2-pole	
10-pole	

End plate	
dark beige	

Test plug	

Terminal blocks identical in contour

Screwdriver	
Standard	

Marking tags	

G-fuse cartridge, 5 x 20 mm (IEC 60127-2)	
0.25 A fast	
0.50 A fast	
1.00 A fast	
2.00 A fast	

Type	Qty.	Order No.
ZQV 4N/2	32 A 60	1527930000
ZQV 4N/10	32 A 20	1528090000
SEP 3C 4	20	2874800000
PS 2.0 MC	20	0310000000
A3C 4	32 A 50	2051240000
A3C 4 PE	50	2051410000
SDIL 0.6X3.5X100	1	2749140000
DEK 5/6 PLUS MC NE WS	1000	1011320000
WS 10/6 M PLUS MC NE WS	600	2003780000
DEK 5/6 MM WS	600	2007120000
WS 8/6 MM WS	600	2007160000
G 20/0.25A/F	0.25 A 10	0430500000
G 20/0.50A/F	0.5 A 10	0430600000
G 20/1.00A/F	1 A 10	0430700000
G 20/2.00A/F	2 A 10	0430900000

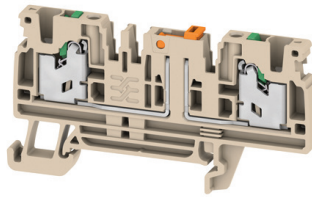
For detailed information on other accessories and applications, visit [eshop.weidmueller.com](http://eshop.weidmueller.com)

**Spring connection with SNAP IN technology (S-Series)**  
**Test-disconnect terminal blocks**

**SDT 2.5 2C**

**2.5 mm<sup>2</sup>**

**SNAP IN**



Width/ height/ depth	mm
Max. current / max. cond. cross-section	A/mm <sup>2</sup>
Max. clamping range	mm <sup>2</sup>

5.1 x 77.5 x 37.65	
<b>20 / 2.5</b>	
<b>0.34...2.5</b>	

**Technical data**

<b>Rated data</b>	
Rated voltage of feed-through terminal	V
Rated current	A
For wire cross-section	mm <sup>2</sup>
Short Circuit Current Rating (SCCR)	
Rated impulse withstand voltage / Pollution severity	
Gauge to IEC 60947-1 / UL 94 flammability rating	
Approvals	
<b>Clamped conductors</b>	
Solid / Stranded	mm <sup>2</sup>
Flexible / Flexible with ferrule	mm <sup>2</sup>
Stripping length / Blade size	mm/-

**Note**

**Ordering data**

<b>Version</b>	
	dark beige
	blue
	orange

**Note**

**Accessories**

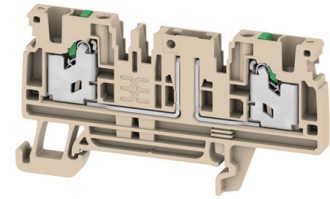
<b>Plug-in cross-connection</b>	
	2-pole
	10-pole
	2-pole
	10-pole
<b>End plate</b>	
	dark beige
<b>End bracket</b>	
	dark beige, screwable
	dark beige, direct mounting
<b>Test adapter</b>	
	1-pole
	stackable
	3-pole
	5-pole
<b>Test plug</b>	
<b>Screwdriver</b>	
	standard
<b>Switch lock</b>	
	red
<b>Marking tags</b>	

For detailed information on other accessories and applications, visit [eshop.weidmueller.com](http://eshop.weidmueller.com)

**SDT 2.5 2C w/o DTLV**

**2.5 mm<sup>2</sup>**

**SNAP IN**



5.1 x 77.5 x 36.5	
<b>20 / 2.5</b>	
<b>0.34...2.5</b>	

DIN EN 60947-1			
<b>IEC</b>	<b>UL</b>	<b>CSA</b>	<b>EN 60079-7</b>
500	600		
20	20		
2.5	AWG 22...12		
	10kA		
	6 kV / 3		
	A3 / V-0		

<b>Rated connection</b>	
/ 0.5...2.5	
2.5...2.5 / 0.5...2.5	
10 / 0.6 x 3.5 mm	

**Note**

<b>Type</b>			<b>Qty.</b>	<b>Order No.</b>
SDT 2.5 2C W/O DTLV				<b>3016710000</b>
SDT 2.5 2C W/O DTLV BL				<b>2983270000</b>
SDT 2.5 2C W/O DTLV OR				<b>2983260000</b>

<b>Type</b>			<b>Qty.</b>	<b>Order No.</b>
ZQV 2.5N/2	24 A	60		<b>1527540000</b>
ZQV 2.5N/10	24 A	20		<b>1527690000</b>

<b>Type</b>			<b>Qty.</b>	<b>Order No.</b>
SEP 3C 2.5		20		<b>2751090000</b>
AEB 35 SC/1		50		<b>1991920000</b>
AEB 35 SCL/1 VO		20		<b>2661280000</b>

<b>Type</b>			<b>Qty.</b>	<b>Order No.</b>
ATPG 1.5-10 L	0.2 A	50		<b>1991890000</b>
ATPG 2.5 MI-R	0.2 A	50		<b>1991960000</b>
ATPG 2.5/3	0.2 A	25		<b>2041190000</b>
ATPG 2.5/5	0.2 A	25		<b>2041180000</b>

<b>Type</b>			<b>Qty.</b>	<b>Order No.</b>
PS 2.0 MC		20		<b>0310000000</b>
SDIL 0.6X3.5X100		1		<b>2749140000</b>
DTLE 2.5/4		25		<b>2910530000</b>

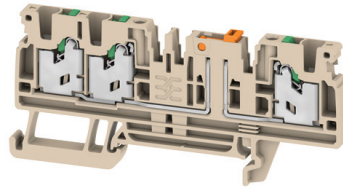
<b>Type</b>			<b>Qty.</b>	<b>Order No.</b>
DEK 5/5 PLUS MC NE WS		1000		<b>1854490000</b>
DEK 5/5 MM WS		800		<b>2007110000</b>
WS 8/5 MM WS		800		<b>2007150000</b>
WS 10/5 M PLUS MC NE WS		600		<b>2003770000</b>

For detailed information on other accessories and applications, visit [eshop.weidmueller.com](http://eshop.weidmueller.com)

SDT 2.5 3C

2.5 mm<sup>2</sup>

**SNAP IN**



Width/ height/ depth	mm
Max. current / max. cond. cross-section	A /mm <sup>2</sup>
Max. clamping range	mm <sup>2</sup>

5.1 x 84.5 x 37.65	
<b>20 / 2.5</b>	
<b>0.34...2.5</b>	

**Technical data**

Rated data	
Rated voltage of feed-through terminal	V
Rated current	A
For wire cross-section	mm <sup>2</sup>
Short Circuit Current Rating (SCCR)	
Rated impulse withstand voltage / Pollution severity	
Gauge to IEC 60947-1 / UL 94 flammability rating	
Approvals	
Clamped conductors	
Solid / Stranded	mm <sup>2</sup>
Flexible / Flexible with ferrule	mm <sup>2</sup>
Stripping length / Blade size	mm/-
Note	

DIN EN 60947-7-1			
IEC	UL	CSA	EN 60079-7
500	600		
24	20		
2.5	AWG 22...12		
		10kA	
		6 kV / 3	
		A3 / V-0	
Rated connection			
0.5...2.5 / 0.5...2.5			
0.5...2.5 / 0.34...2.5			
10 / 0.6 x 3.5 mm			
Note			

**Ordering data**

Version	
	dark beige
	Blue
	Orange
Note	

Type	Qty.	Order No.
SDT 2.5 3C		3016680000
SDT 2.5 3C BL		2974150000
SDT 2.5 3C OR		2974140000
Note		

**Accessories**

Plug-in cross-connection	
	2-pole
	10-pole
	2-pole
	10-pole
End plate	
	dark beige
End bracket	
	dark beige, screwable
	dark beige, direct mounting
Test adapter	
	1-pole
	stackable
	3-pole
	5-pole
Test plug	
Screwdriver	
	Standard
Switch lock	
	red
Marking tags	

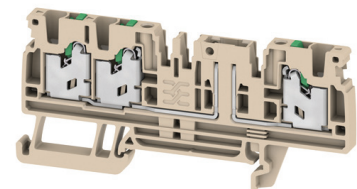
Type	Qty.	Order No.
ZQV 2.5N/2	24 A 60	1527540000
ZQV 2.5N/10	24 A 20	1527690000
SEP 4C 2.5	20	2751100000
AEB 35 SC/1	50	1991920000
AEB 35 SCL/1 V0	20	2661280000
ATPG 1.5-10 L	0.2 A 50	1991890000
ATPG 2.5 MI-R	0.2 A 50	1991960000
ATPG 2.5/3	0.2 A 25	2041190000
ATPG 2.5/5	0.2 A 25	2041180000
PS 2.0 MC	20	0310000000
SDIL 0.6X3.5X100	1	2749140000
DTLE 2.5/4	25	2910530000
DEK 5/5 PLUS MC NE WS	1000	1854490000
DEK 5/5 MM WS	800	2007110000
WS 8/5 MM WS	800	2007150000
WS 10/5 M PLUS MC NE WS	600	2003770000
Note		

For detailed information on other accessories and applications, visit [eshop.weidmueller.com](http://eshop.weidmueller.com)

SDT 2.5 3C w/o DTLV

2.5 mm<sup>2</sup>

**SNAP IN**



5.1 x 84.5 x 36.5	
<b>20 / 2.5</b>	
<b>0.34...2.5</b>	

DIN EN 60947-7-1			
IEC	UL	CSA	EN 60079-7
	600		
20	20		
2.5	AWG 22...12		
		10kA	
		6 kV / 3	
		A3 / V-0	
Rated connection			
0.5...2.5 / 0.5...2.5			
0.5...2.5 / 0.34...2.5			
10 / 0.6 x 3.5 mm			
Note			

Type	Qty.	Order No.
SDT 2.5 3C W/O DTLV		3016730000
SDT 2.5 3C W/O DTLV BL		2983290000
SDT 2.5 3C W/O DTLV OR		2983280000
Note		

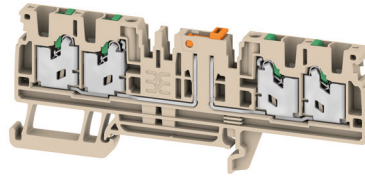
Type	Qty.	Order No.
ZQV 2.5N/2	24 A 60	1527540000
ZQV 2.5N/10	24 A 20	1527690000
SEP 4C 2.5	20	2751100000
AEB 35 SC/1	50	1991920000
AEB 35 SCL/1 V0	20	2661280000
ATPG 1.5-10 L	0.2 A 50	1991890000
ATPG 2.5 MI-R	0.2 A 50	1991960000
ATPG 2.5/3	0.2 A 25	2041190000
ATPG 2.5/5	0.2 A 25	2041180000
PS 2.0 MC	20	0310000000
SDIL 0.6X3.5X100	1	2749140000
DTLE 2.5/4	25	2910530000
DEK 5/5 PLUS MC NE WS	1000	1854490000
DEK 5/5 MM WS	800	2007110000
WS 8/5 MM WS	800	2007150000
WS 10/5 M PLUS MC NE WS	600	2003770000
Note		

**Spring connection with SNAP IN technology (S-Series)**  
**Test-disconnect terminal blocks**

**SDT 2.5 4C**

**2.5 mm<sup>2</sup>**

**SNAP IN**



Width/ height/ depth	mm
Max. current / max. cond. cross-section	A/mm <sup>2</sup>
Max. clamping range	mm <sup>2</sup>

5.1 x 96 x 37.65  
**20 / 2.5**  
**0.34...2.5**



**Technical data**

<b>Rated data</b>	
Rated voltage of feed-through terminal	V
Rated current	A
For wire cross-section	mm <sup>2</sup>
Short Circuit Current Rating (SCCR)	
Rated impulse withstand voltage / Pollution severity	
Gauge to IEC 60947-1 / UL 94 flammability rating	
Approvals	
<b>Clamped conductors</b>	
Solid / Stranded	mm <sup>2</sup>
Flexible / Flexible with ferrule	mm <sup>2</sup>
Stripping length / Blade size	mm/-

**Note**

**Ordering data**

<b>Version</b>	
	dark beige
	blue
	orange

**Note**

**Accessories**

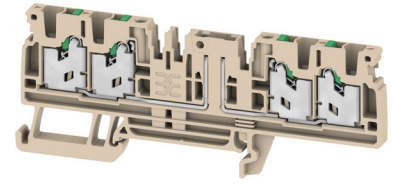
<b>Plug-in cross-connection</b>	
	2-pole
	10-pole
	2-pole
	10-pole
<b>End plate</b>	
	dark beige
<b>End bracket</b>	
	dark beige, screwable
	dark beige, direct mounting
<b>Test adapter</b>	
	1-pole
	stackable
	3-pole
	5-pole
<b>Test plug</b>	
<b>Screwdriver</b>	
	standard
<b>Switch lock</b>	
	red
<b>Marking tags</b>	

For detailed information on other accessories and applications, visit [eshop.weidmueller.com](http://eshop.weidmueller.com)

**SDT 2.5 4C w/o DTLV**

**2.5 mm<sup>2</sup>**

**SNAP IN**



5.1 x 96 x 36.5  
**20 / 2.5**  
**0.34...2.5**



DIN EN 60947-1

<b>IEC</b>	<b>UL</b>	<b>CSA</b>	<b>EN 60079-7</b>
500	600		
20	20		
2.5	AWG 22...12		
		10kA	
		6 kV / 3	
		A3 / V-0	

CE, UL, IEC, A3, V-0

<b>Rated connection</b>	
	0.5...2.5 / 0.5...2.5
	0.5...2.5 / 0.34...2.5
	10 / 0.6 x 3.5 mm

**Note**

<b>Type</b>	<b>Qty.</b>	<b>Order No.</b>
SDT 2.5 4C W/O DTLV		3016740000
SDT 2.5 4C W/O DTLV BL		2983740000
SDT 2.5 4C W/O DTLV OR		2983730000

**Note**

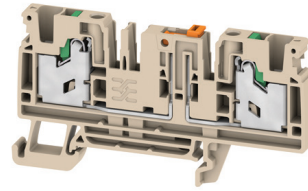
<b>Type</b>	<b>Qty.</b>	<b>Order No.</b>
ZQV 2.5N/2	24 A 60	1527540000
ZQV 2.5N/10	24 A 20	1527690000
<b>SEP DT 2.5 4C</b>		
SEP DT 2.5 4C		2929670000
<b>AEB 35 SC/1</b>		
AEB 35 SC/1	50	1991920000
AEB 35 SCL/1 VO	20	2661280000
<b>ATPG 1.5-10 L</b>		
ATPG 1.5-10 L	0.2 A 50	1991890000
<b>ATPG 2.5 MI-R</b>		
ATPG 2.5 MI-R	0.2 A 50	1991960000
<b>ATPG 2.5/3</b>		
ATPG 2.5/3	0.2 A 25	2041190000
<b>ATPG 2.5/5</b>		
ATPG 2.5/5	0.2 A 25	2041180000
<b>PS 2.0 MC</b>		
PS 2.0 MC	20	0310000000
<b>SDIL 0.6X3.5X100</b>		
SDIL 0.6X3.5X100	1	2749140000
<b>DTLE 2.5/4</b>		
DTLE 2.5/4	25	2910530000
<b>DEK 5/5 PLUS MC NE WS</b>		
DEK 5/5 PLUS MC NE WS	1000	1854490000
<b>DEK 5/5 MM WS</b>		
DEK 5/5 MM WS	800	2007110000
<b>WS 8/5 MM WS</b>		
WS 8/5 MM WS	800	2007150000
<b>WS 10/5 M PLUS MC NE WS</b>		
WS 10/5 M PLUS MC NE WS	600	2003770000

For detailed information on other accessories and applications, visit [eshop.weidmueller.com](http://eshop.weidmueller.com)

SDT 4 2C

4 mm<sup>2</sup>

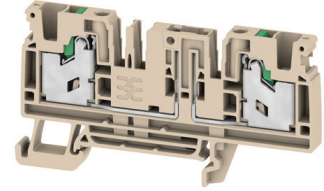
**SNAP IN**



SDT 4 2C w/o DTLV

4 mm<sup>2</sup>

**SNAP IN**



Width/ height/ depth	mm
Max. current / max. cond. cross-section	A / mm <sup>2</sup>
Max. clamping range	mm <sup>2</sup>

6.1 x 74 x 41	
<b>20 / 4</b>	
<b>0.75...4</b>	

6.1 x 74 x 41	
<b>20 / 4</b>	
<b>0.75...4</b>	

**Technical data**

Rated data	
Rated voltage of feed-through terminal	V
Rated current	A
For wire cross-section	mm <sup>2</sup>
Short Circuit Current Rating (SCCR)	
Rated impulse withstand voltage / Pollution severity	
Gauge to IEC 60947-1 / UL 94 flammability rating	
Approvals	
Clamped conductors	
Solid / Stranded	mm <sup>2</sup>
Flexible / Flexible with ferrule	mm <sup>2</sup>
Stripping length / Blade size	mm/-
Note	

IEC 60947-1				
IEC	UL	CSA	EN 60079-7	
500	300 (B, C) 600 (D)			
20	25 (B, C) 5 (D)			
4	AWG 20...10			
	10kA			
	4 kV / 3			
	A4 / V-0			
Rated connection				
0.75...4 / 0.75...4				
0.75...4 / 0.75...4				
12 / 0.6 x 3.5 mm				
Note				

IEC 60947-1				
IEC	UL	CSA	EN 60079-7	
	300 (B, C) 600 (D)			
20	25 (B, C) 5 (D)			
4	AWG 20...10			
	10kA			
	4 kV / 3			
	A4 / V-0			
Rated connection				
0.75...4 / 0.75...4				
0.75...4 / 0.75...4				
12 / 0.6 x 3.5 mm				
Note				

**Ordering data**

Version	
	dark beige
	blue
	orange
Note	

Type	Qty.	Order No.
SDT 4 2C	1	2941420000
SDT 4 2C BL	50	2941430000
SDT 4 2C OR	50	2941440000
Note		

Type	Qty.	Order No.
SDT 4 2C w/o DTLV	50	2941450000
SDT 4 2C w/o DTLV BL	50	2941460000
SDT 4 2C w/o DTLV OR	50	2941470000
Note		

**Accessories**

Plug-in cross-connection	
	2-pole
	10-pole
	2-pole
	10-pole
End plate	
	dark beige
End bracket	
	dark beige, screwable
	dark beige, direct mounting
Test adapter	
	1-pole
	stackable
	3-pole
	5-pole
Test plug	
Screwdriver	
	standard
Switch lock	
	red
Marking tags	

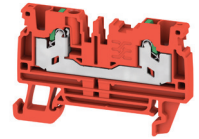
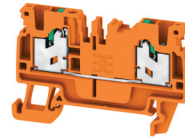
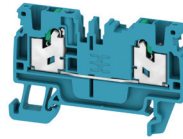
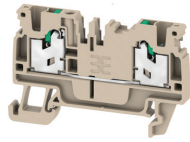
Type	Qty.	Order No.
ZQV 4N/2	32 A 60	1527930000
ZQV 4N/10	32 A 20	1528090000
SEP 3C 4	20	2874800000
AEB 35 SC/1	50	1991920000
AEB 35 SCL/1 V0	20	2661280000
ATPG 1.5-10 L	0.2 A 50	1991890000
ATPG 4 MI-R	0.2 A 50	1991860000
PS 2.0 MC	20	0310000000
SDIL 0.6X3.5X100	1	2749140000
DTLE 2.5/4	25	2910530000
WS 10/6 M PLUS MC NE WS	600	2003780000
WS 8/6 MM WS	600	2007160000
DEK 5/6 MM WS	600	2007120000
DEK 5/6 PLUS MC NE WS	1000	1011320000
Note		

Type	Qty.	Order No.
ZQV 4N/2	32 A 60	1527930000
ZQV 4N/10	32 A 20	1528090000
SEP 3C 4	20	2874800000
AEB 35 SC/1	50	1991920000
AEB 35 SCL/1 V0	20	2661280000
ATPG 1.5-10 L	0.2 A 50	1991890000
ATPG 4 MI-R	0.2 A 50	1991860000
PS 2.0 MC	20	0310000000
SDIL 0.6X3.5X100	1	2749140000
DTLE 2.5/4	25	2910530000
WS 10/6 M PLUS MC NE WS	600	2003780000
WS 8/6 MM WS	600	2007160000
DEK 5/6 MM WS	600	2007120000
DEK 5/6 PLUS MC NE WS	1000	1011320000
Note		

For detailed information on other accessories and applications, visit [eshop.weidmueller.com](http://eshop.weidmueller.com)

**Spring connection with SNAP IN technology (S-Series)**  
**Overview – Color Variants**

**SNAP IN**



Type	
2.5 mm <sup>2</sup>	S2C 2.5
	S3C 2.5
	S4C 2.5
4 mm <sup>2</sup>	S2C 4
	S3C 4
	S4C 4

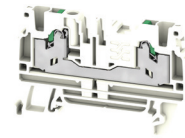
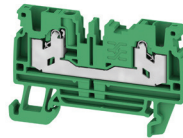
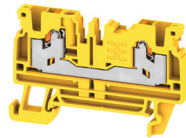
Order no.
beige
2674530000
2674540000
2674550000
2874820000
2874840000
2874860000

Order no.
blue BL
2753940000
2753950000
2753960000
2874830000
2874850000
2874870000

Order no.
orange OR
2875120000
2875130000
2875140000
3023540000
3023550000
3023560000

Order no.
red RD
3109200000
3109280000
3109360000
3109440000
3109520000
3109600000

**SNAP IN**



Type	
2.5 mm <sup>2</sup>	S2C 2.5
	S3C 2.5
	S4C 2.5
4 mm <sup>2</sup>	S2C 4
	S3C 4
	S4C 4

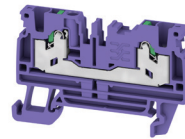
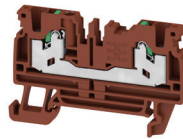
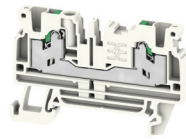
Order no.
yellow YL
3109230000
3109310000
3109390000
3109470000
3109550000
3109630000

Order no.
green GN
3109180000
3109260000
3109340000
3109420000
3109500000
3109580000

Order no.
white WT
3109220000
3109300000
3109380000
3109460000
3109540000
3109620000

Order no.
black BK
3109160000
3109240000
3109320000
3109400000
3109480000
3109560000

**SNAP IN**



Type	
2.5 mm <sup>2</sup>	S2C 2.5
	S3C 2.5
	S4C 2.5
4 mm <sup>2</sup>	S2C 4
	S3C 4
	S4C 4

Order no.
light gray LTGY
3112230000
3112240000
3112250000
3112280000
3112260000
3112270000

Order no.
brown BR
3109170000
3109250000
3109330000
3109410000
3109490000
3109570000

Order no.
violet VT
3109210000
3109290000
3109370000
3109450000
3109530000
3109610000



# Weidmuller – Your Partner in Smart Industrial Connectivity

As experienced experts we support our customers and partners around the world with products, solutions and services in the industrial environment of power, signal and data. We are at home in their industries and markets and know the technological challenges of tomorrow. We are therefore continuously developing innovative, sustainable and useful solutions for their individual needs. Together we set standards in Industrial Connectivity.

Weidmuller, Inc  
821 Southlake Blvd.  
Richmond, Virginia 23236  
Telephone: (800) 849-9343  
Website: [www.weidmuller.com](http://www.weidmuller.com)  
Email: [customerservice@weidmuller.com](mailto:customerservice@weidmuller.com)

Support can be found on our website:  
[www.weidmuller.com/contact](http://www.weidmuller.com/contact)

USA Version  
07/25 | LIT2016