

Weidmüller Enclosure Systems & Components

Klippon® Protect - Safety and Protection for Connection Solutions



Weidmüller 

Klippon® Protect Enclosures – Safe. Robust. Functional.

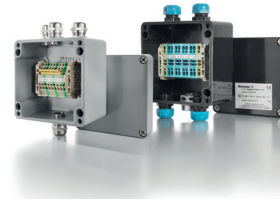
The flexible Klippon® Protect enclosure system is the perfect addition to our Klippon® Connect range of modular terminal blocks. Rely on our enclosures that are optimized for your requirements and provide excellent protection. With Klippon® Protect, you can choose from a wide range of universal and application-specific enclosures. The enclosures cover all relevant approvals required for use in industrial or explosive risk zones.



Klippon® FPC, MPC & TBF
Polycarbonate and Polyester Enclosures



Klippon® K Aluminum Enclosures



POK Glass-fiber Reinforced Polyester Enclosures



Klippon® KTB & STB
Stainless Steel Enclosures

Cable Entry Systems and Components

Weidmüller offers a variety of add-on components for a multitude of purposes and applications to complement its extensive Klippon® Protect range. In addition to brass, plastic and stainless steel cable glands, there are also sealing plugs, pressure-equalizing elements, adapters and relevant accessories available – such as lock nuts, flat gaskets, flat washers and earthing rings. To match the assembled enclosures, the cable glands meet the requirements of IP protection classes IP54 to IP69K.

Depending on the cable gland variants and application, the cable glands, sealing plugs, adaptors, pressure-equalizing elements and accessories are manufactured and certified according to the following standards:



- Single Orientation Clamping System
- Installation with no reversible components
- Deluge proof - no additional seals or boots required
- Built-in Interface seal
- Displacement seal on inner sheath minimizes damage
- IP66 & IP68 to 50 meters
- Ex db; Ex eb; Ex nR; Ex ta; Class 1 Div 2 Grps A,B,C,D; Class II Div I E,F,G; Class III Type 4X; Class I Zone 1 Ex d IIC/ Ex e II; Class II Zone 20 Aex ta IIC da; Aex e; Aex ta
- Certifications: ATEX, IECEx, CEC, NEC - USA, EAC, INMETRO, CCC, KCS, ABS, LLOYD'S
- Standards: UL514B; UL1203; UL2225; UL50E; ANSI/UL 60079-0/7; ISA 60079-31;
- C22.2; CAN/CSA 60079-0/1/7
- EN60079-0, EN60079-1, EN60079-78, EN60079-15, EN 60079-31;
- IEC 60079-0, IEC 60079-1, IEC60079-7, IEC60079-31, IEC 60529



Other Accessories Available for Enclosure Modifications



Conduit Hub



Liquid Tight

Contact Weidmüller for availability.

Klippon® TB Enclosure Series

Stainless Steel Enclosures for Use Within Hazardous Areas

The Klippon® TB enclosure series offers excellent performance characteristics and meets the stricter requirements of hazardous areas.

- Options available in 31 sizes and 3 depths
- 316L Stainless steel (304SS available upon request)
- IP66/IP67 Rating
- Seamless one piece high-temp silicone gasket
- Corrosion resistant electro-polished surface
- Railway approved
- Custom sizes and modifications available
- Meets EN62208 & EN 60079 standards

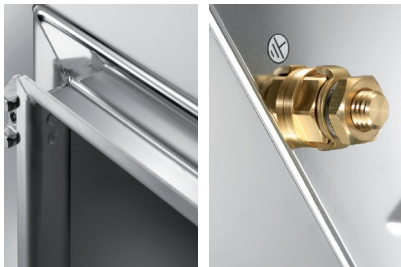
Temperature and Sealing Characteristics

The enclosures come standard with a silicone seal for use under extreme temperatures.



Safe Protection

An integrated dust and moisture channel prevents dirt and moisture from penetrating when the enclosure is opened. The external earthing stud is equipped with an IP66/67 certified sealing mechanism and is protected against twisting.



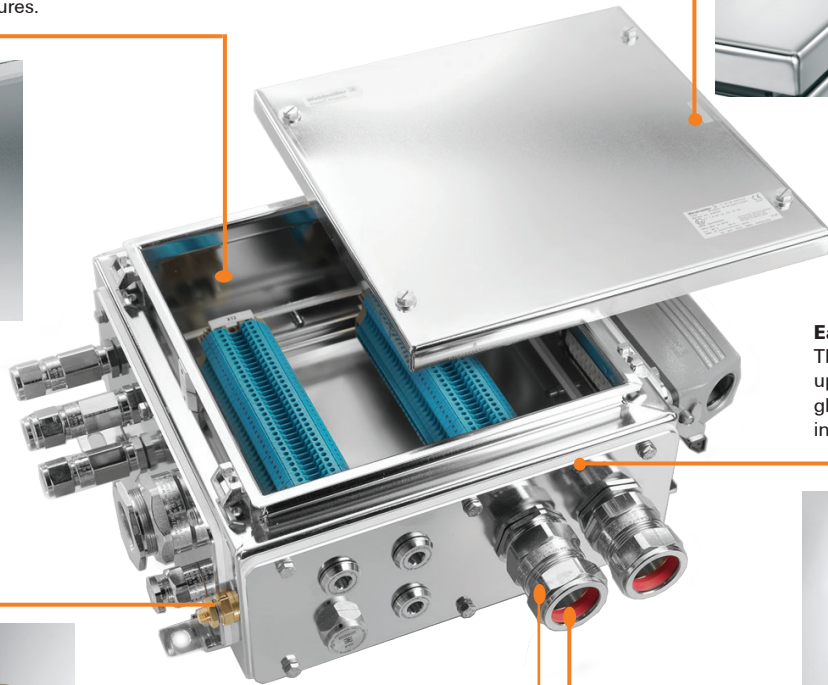
Approvals

The Klippon® TB range of enclosures has been awarded international approvals.



Safety and Stability

The different sealing systems prevent unauthorized access to the enclosure. Inner thread sockets (which are welded on) provide a stable attachment mechanism for gland plates and protect against leaks.



Easy installation

The enclosures are delivered with up to four gland plates so that cable glands can be easily and quickly installed and attached.



Versatile Installation Options

Mounting bolts are located within the enclosure for installing rails and mounting plates. Welded-on mounting feet provide for a fast, secure and stable wall mounting.



Klippon® Cable Glands

Our complete series of IP66 and IP68 cable glands and accessories are an excellent complement to the Klippon® TB enclosure series. Cable glands enable the connection of Armored and Unarmored cables from M20 to M75.



Klippon® TB MH – Multi-Hinge

316L Stainless Steel enclosures for use in industrial and in potentially explosive atmospheres

The Klippon® TB enclosure range features excellent performance characteristics, even under the most difficult environmental conditions, and also comply with the stricter requirements of potentially explosive atmospheres found in the process or power generation industries. The Klippon® TB MH enclosure range offers further improvements to a product line that is successfully leading the market.

Weidmüller manufactures and supplies the enclosures to match customer specifications – fully fitted with terminals, electronics and cable glands.



Features:

- Available in 31 sizes and 3 standard depths with customer-specific sizes on request
- The high temperature silicone gasket protects against corrosion
- Completely removable padlock tab
- Cover lock outside the sealed zone
- Improved temperature performance
- IP66/IP67 protection
- Reversible cover can be removed without a tool
- Welded mounting feet
- International approvals
- Available in 304 stainless steel upon request



Class 1 Div 2 A,B,C,D, Zone 1, Zone 2, 21, 22; AEx eb, AEx ta; Ex eb, Ex tb



Discover more
in our Weidmüller Configurator:
www.weidmuller.com/wmc

Technical Overview

Technical Data

Enclosure material*	Stainless steel 1.4404 (316L) 1.5 mm
Surface finish	electropolished
IP protection class	IP66 / IP67 to DIN EN 60529
NEMA protection classes	3, 4x, 12
Gland plates	1-4 (fixed with M6 hexagon head screws with 10 mm heads), optionally without a gland plate
Gland plate thickness	3 mm (other thickness are available on request)
Earthing inside	Enclosure base and lid: welded M6 stainless steel earth studs
Earthing outside	Continuous M10 brass earth stud (optionally with stainless-steel earth stud)
Installation mounting	4 or 9 mounting bolts with M6 threaded holes to attach the mounting plate or mounting rail
Enclosure attachment	4 or 6 welded mounting feet with 11-mm holes (2 slotted and 2 cross-shaped openings)
Lid opening	Lid can be fully removed without the use of tools, can be fitted on both sides, lid opening angle: 130°
Cover attachment	4 hinges and M6 hex-head screws (AF 10) with slot
Equipped for a padlock	Removable padlock fitting, for additional product security
Impact resistance	7 J to IEC 60079-0, IK 09 (10J) to DIN EN 50102
Gasket material	Silicone
Operating temperature range	-60 °C...+105 °C (IP66/IP67), -60 °C...+135 °C (IP66)
Torque – lid and gland plate screws	2.5 Nm

Note * Painted enclosures are available on request.

Approvals for empty enclosures

ATEX certificate	IBExU14ATEX1028 U	EAC	C-DE.HB07.B.00089/20 / C-DE.AD54.B.00251/19
ATEX marking	II 2G Ex eb IIC Gb II 2D Ex tb IIIC Db	cULus	E243298
IECEx certificate	IECEx IBE 14.0004U	DNV GL	TAE000013S
IECEx marking	Ex eb IIC Gb Ex tb IIIC Db	CCOE	In preparation
CCCEX certificate	2020322303002357	INMETRO	IEEx 17.0020U
CCCEX marking	Ex e IIC Gb, Ex tD A21 IP66/67	AEx	E223792
		Miscellaneous	EN 45545, DIN EN 15085-2/CL2

Note The Klippon® TB enclosure range can be pre-fitted in our customer specific production department.

Klippon® TB Multi-Hinge Enclosures

KTB MH 316L SS Hinged Screw Cover

Model	H x W x D (in Inches)	H x W x D (in mm)	0 Gland Plates	1 Gland Plate (below)	2 Gland Plates (above + below)	3 Gland plates (below + sides)	4 Gland plates (all sides)	***Mounting Plates Steel	***Mounting Plates Steel Pre-drilled	***Mounting Plates 304SS	***Mounting Plates 304SS Pre-drilled
KTB MH 221513 S4E_*	9 x 6 x 5	229 x 152 x 133	1194550000	1194560000	1194570000	1194580000	1194590000	1193930000	2022050000	1193810000	1257650000
KTB MH 262615 S4E_*	10 x 10 x 6	260 x 260 x 150	1194600000	1194610000	1194620000	1194630000	1194640000	1193950000	2022060000	1193820000	1257660000
KTB MH 262620 S4E_*	10 x 10 x 8	260 x 260 x 200	1194650000	1194660000	1194670000	1194680000	1194690000	1193950000	2022060000	1193820000	1257660000
New KTB MH 302015 S4E_*	12 x 8 x 6	306 x 203 x 150	8000108831	8000108832		8000108833		8000110193	8000115913	8000115923	8000115902
KTB MH 303015 S4E_*	12 x 12 x 6	306 x 306 x 150	1194700000	1194710000	1194720000	1194730000	1194740000	1193960000	2022190000	1193830000	1257670000
KTB MH 303020 S4E_*	12 x 12 x 8	306 x 306 x 200	1194750000	1194760000	1194770000	1194780000	1194790000	1193960000	2022190000	1193830000	1257670000
KTB MH 352615 S4E_*	14 x 10 x 6	350 x 260 x 150	1194800000	1194810000	1194820000	1194830000	1194840000	1193970000	2022230000	1193840000	1257680000
KTB MH 352620 S4E_*	14 x 10 x 8	350 x 260 x 200	1194850000	1194860000	1194870000	1194880000	1194890000	1193970000	2022230000	1193840000	1257680000
New KTB MH 353515 S4E_*	14 x 14 x 6	350 x 350 x 150	8000108834	8000108835		8000108836		8000110194	8000115914	8000115924	8000115903
New KTB MH 353520 S4E_*	14 x 14 x 8	350 x 350 x 200	8000108837	8000108838		8000108839		8000110194	8000115914	8000115924	8000115903
KTB MH 403015 S4E_*	16 x 12 x 6	400 x 300 x 150	1194900000	1194910000	1194920000	1194930000	1194940000	1193980000	2022420000	1193850000	1257690000
KTB MH 403020 S4E_*	16 x 12 x 8	400 x 300 x 200	1194950000	1194960000	1194970000	1194980000	1194990000	1193980000	2022420000	1193850000	1257690000
New KTB MH 404015 S4E_*	16 x 16 x 6	406 x 406 x 150	8000108840	8000108841		8000108842		8000110195	8000115915	8000115925	8000115904
New KTB MH 404020 S4E_*	16 x 16 x 8	406 x 406 x 200	8000108843	8000108844		8000108845		8000110195	8000115915	8000115925	8000115904
KTB MH 453815 S4E_*	18 x 15 x 6	458 x 382 x 150	1195000000	1195010000	1195020000	1195030000	1195040000	1193990000	2022590000	1193860000	1257700000
KTB MH 453820 S4E_*	18 x 15 x 8	458 x 382 x 200	1195050000	1195060000	1195070000	1195080000	1195090000	1193990000	2022590000	1193860000	1257700000
KTB MH 484815 S4E_*	19 x 19 x 6	480 x 480 x 150	1195100000	1195110000	1195120000	1195130000	1195140000	1194000000	2022610000	1193870000	1257710000
KTB MH 484820 S4E_*	19 x 19 x 8	480 x 480 x 200	1195150000	1195160000	1195170000	1195180000	1195190000	1194000000	2022610000	1193870000	1257710000
New KTB MH 504015 S4E_*	20 x 16 x 6	508 x 406 x 150	8000108846	8000108847		8000108848		8000110196	8000115916	8000115926	8000115905
New KTB MH 504020 S4E_*	20 x 16 x 8	508 x 406 x 200	8000108849	8000108850		8000108851		8000110196	8000115916	8000115926	8000115905
KTB MH 553515 S4E_*	21 x 14 x 6	550 x 350 x 150	1195200000	1195210000	1195220000	1195230000	1195240000	1194010000	2022650000	1193880000	1257720000
KTB MH 553520 S4E_*	21 x 14 x 8	550 x 350 x 200	1195250000	1195260000	1195270000	1195280000	1195290000	1194010000	2022650000	1193880000	1257720000
KTB MH 355520 S4E_*	14 x 21 x 8	350 x 550 x 200	2698040000	2698050000				2715560000	2716090000		
New KTB MH 624020 S4E_*	24 x 16 x 8	620 x 406 x 200	8000108852	8000108853		8000108854		8000110198	8000115917	8000115927	8000115906
KTB MH 624515 S4E_*	24 x 18 x 6	620 x 450 x 150	1195300000	1195310000	1195320000	1195330000	1195340000	1194020000	2022670000	1193890000	1257740000
KTB MH 624520 S4E_*	24 x 18 x 8	620 x 450 x 200	1195350000	1195360000	1195370000	1195380000	1195390000	1194020000	2022670000	1193890000	1257740000
KTB MH 456220 S4E_*	18 x 24 x 8	450 x 620 x 200	2698060000	2698070000				2716100000	2716110000		
New KTB MH 625015 S4E_*	24 x 20 x 6	620 x 508 x 150	8000108855	8000108856		8000108857		8000110199	8000115918	8000115928	8000115907
New KTB MH 625020 S4E_*	24 x 20 x 8	620 x 508 x 200	8000108858	8000108859		8000108860		8000110199	8000115918	8000115928	8000115907
New KTB MH 626215 S4E_*	24 x 24 x 6	620 x 620 x 150	8000108861	8000108862			8000108863	8000110200	8000115919	8000115929	8000115908
New KTB MH 626220 S4E_*	24 x 24 x 8	620 x 620 x 200	8000108864	8000108865			8000108866	8000110200	8000115919	8000115929	8000115908
KTB MH 765015 S4E_*	30 x 20 x 6	762 x 508 x 150	1195400000	1195410000	1195420000	1195430000	1195440000	1194030000	2022680000	1193900000	1257750000
KTB MH 765020 S4E_*	30 x 20 x 8	762 x 508 x 200	1195450000	1195460000	1195470000	1195480000	1195490000	1194030000	2022680000	1193900000	1257750000
KTB MH 507620 S4E_*	20 x 30 x 8	508 x 762 x 200	2698080000	2698090000				2716120000	2716130000		
New KTB MH 766215 S4E_*	30 x 24 x 6	762 x 620 x 150	8000108867	8000108868		8000108869		8000110201	8000115920	8000115930	8000115909
New KTB MH 766220 S4E_*	30 x 24 x 8	762 x 620 x 200	8000108870	8000108872		8000108873		8000110201	8000115920	8000115930	8000115909
KTB MH 916115 S4E_*	36 x 24 x 6	914 x 610 x 150	1195500000	1195510000	1195520000	1195530000	1195540000	1194040000	2022740000	1193910000	1257760000
KTB MH 916120 S4E_*	36 x 24 x 8	914 x 610 x 200	1195550000	1195560000	1195570000	1195580000	1195590000	1194040000	2022740000	1193910000	1257760000
New KTB MH 917620 S4E_*	36 x 30 x 8	914 x 762 x 200	8000108875	8000108877		8000108879		8000116040	8000115921	8000115931	8000115910
New KTB MH 919120 S4E_*	36 x 36 x 8	914 x 914 x 200	8000108880	8000108882		8000108884		8000116041	8000115922	8000115932	8000115911
KTB MH 987420 S4E_*	40 x 30 x 8	980 x 740 x 200	1195600000	1195610000	1195620000	1195630000	1195640000	1194050000	2022760000	1193920000	1257770000

Note: * Placeholder for number of gland plates (0, 1, 2, 3, 4). **Mounting plate screws sold separately - Order # 0642600000 (set of 4). *** Mounting Plates Sold Separately. Klippon® TB enclosures w/ 2 & 4 gland plates are subject to minimum order quantities.

Klippon® TB QL – Quarter Lock

Stainless steel enclosures for industrial areas and potentially explosive atmospheres

The potentially explosive atmospheres of process industry and power generation plants are subject to difficult environmental conditions and growing safety requirements. With their outstanding performance features, Klippon® TB enclosures are ideally suited to meet these challenges. The tried-and-tested and market-leading product range has now been improved in a number of ways. We manufacture and deliver the enclosures according to your individual requirements – fully assembled with terminal blocks, electronic components and cable glands.

Features:

- 316L Stainless Steel (304 Stainless available upon request)
- Available in 28 standard sizes with 3 standard depths
- Custom sizes available on request
- Equipped with up to four flange plates
- High temperature silicone gasket with compression protection
- Reversible cover with quick release and slot
- Improved temperature performance
- High IP66 protection class
- Integrated earth studs in the cover and lower section
- Welded mounting feet



Class 1 Div 2 A,B,C,D, Zone 1, Zone 2, 21, 22; AEx eb, AEx ta; Ex eb, Ex tb



Discover more in our
Weidmüller Configurator:
www.weidmuller.com/wmc

Technical Overview

Technical Data

Enclosure material*	Stainless steel 1.4404 (316L) 1.5 mm
Surface finish	electropolished
IP protection class	IP66 to DIN EN 60529
NEMA protection classes	3, 4x, 12
Gland plates	1-4 (fixed with M6 hexagon head screws with 10 mm heads), optionally without a gland plate
Gland plate thickness	3 mm (other thickness are available on request)
Earthing inside	Enclosure base and lid: welded M6 stainless steel earth studs
Earthing outside	Continuous M10 brass earth stud (optionally with stainless-steel earth stud)
Installation mounting	4 or 9 mounting bolts with M6 threaded holes to attach the mounting plate or mounting rail
Enclosure attachment	4 or 6 welded mounting feet with 11-mm holes (2 slotted and 2 cross-shaped openings)
Lid opening	Lid can be fully removed without the use of tools, can be fitted on both sides, lid opening angle: 130°
Cover attachment	Quarter-turn lock with slotted insert (other inserts available on request)
Impact resistance	7 J to IEC 60079-0, IK 09 (10J) to DIN EN 50102
Gasket material	Silicone
Operating temperature range	-60 °C...+135 °C
Torque - lid and gland plate screws	2.5 Nm
Note	* Painted enclosures are available on request.

Approvals for empty enclosures

ATEX certificate	IBExU14ATEX1028 U	EAC	C-DE.HB07.B.00089/20 / C-DE.AQ54.B.00251/19
ATEX marking	II 2G Ex eb IIC Gb II 2D Ex tb IIIC Db	cULus DNV GL	E243298 TAE000013S
IECEX certificate	IECEX IBE 14.0004U	CCOE	In preparation
IECEX marking	Ex eb IIC Gb Ex tb IIIC Db	INMETRO	IEx 17.0020U
CCCEX certificate	2020322303002357	AEx	E223792
CCCEX marking	Ex e IIC Gb, Ex tD A21 IP66/67	Miscellaneous	EN 45545, DIN EN 15085-2/CL2
Note	The Klippon® TB enclosure range can be pre-fitted in our customer specific production department.		

Klippon® TB Quarter Turn Lock Enclosures

KTBL QL 316SS QTL

Model	H x W x D (inches)	H x W x D (mm)	0 Gland Plates	1 Gland Plate (below)	2 Gland Plates (above + below)	3 Gland plates (below + sides)	4 Gland plates (all sides)	***Mounting Plates Steel	***Mounting Plates Steel Pre-drilled	***Mounting Plates 304SS	***Mounting Plates 304SS Pre-drilled
KTBL QL 221513 S4E_*	9 x 6 x 5	229 x 152 x 133	1199850000	1199860000	1199870000	1199880000	1199890000	1193930000	2022050000	1193810000	1257650000
KTBL QL 262615 S4E_*	10 x 10 x 6	260 x 260 x 150	1199900000	1199910000	1199920000	1199930000	1199940000	1193950000	2022060000	1193820000	1257660000
KTBL QL 262620 S4E_*	10 x 10 x 8	260 x 260 x 200	1199950000	1199960000	1199970000	1199980000	1199990000	1193950000	2022060000	1193820000	1257660000
New KTBL QL 302015 S4E_*	12 x 8 x 6	306 x 203 x 150	8000109883	8000109885		8000109886		8000110193	8000115913	8000115923	8000115902
KTBL QL 303015 S4E_*	12 x 12 x 6	306 x 306 x 150	1200010000	1200020000	1200030000	1200040000	1200050000	1193960000	2022190000	1193830000	1257670000
KTBL QL 303020 S4E_*	12 x 12 x 8	306 x 306 x 200	1200060000	1200070000	1200080000	1200090000	1200100000	1193960000	2022190000	1193830000	1257670000
KTBL QL 352615 S4E_*	14 x 10 x 6	350 x 260 x 150	1200110000	1200120000	1200130000	1200140000	1200150000	1193970000	2022230000	1193840000	1257680000
KTBL QL 352620 S4E_*	14 x 10 x 8	350 x 260 x 200	1200160000	1200170000	1200180000	1200190000	1200210000	1193970000	2022230000	1193840000	1257680000
New KTBL QL 353515 S4E_*	14 x 14 x 6	350 x 350 x 150	8000109887	8000109888		8000109889		8000110194	8000115914	8000115924	8000115903
New KTBL QL 353520 S4E_*	14 x 14 x 8	350 x 350 x 200	8000109890	8000109891		8000109892		8000110194	8000115914	8000115924	8000115903
KTBL QL 403015 S4E_*	16 x 12 x 6	400 x 300 x 150	1200220000	1200230000	1200240000	1200250000	1200260000	1193980000	2022420000	1193850000	1257690000
KTBL QL 403020 S4E_*	16 x 12 x 8	400 x 300 x 200	1200270000	1200280000	1200290000	1200310000	1200320000	1193980000	2022420000	1193850000	1257690000
New KTBL QL 404015 S4E_*	16 x 16 x 6	400 x 400 x 150	8000109893	8000109894		8000109895		8000110195	8000115915	8000115925	8000115904
New KTBL QL 404020 S4E_*	16 x 16 x 8	400 x 400 x 200	8000109896	8000109897		8000109898		8000110195	8000115915	8000115925	8000115904
KTBL QL 453815 S4E_*	18 x 15 x 6	458 x 382 x 150	1200330000	1200340000	1200350000	1200360000	1200370000	1193990000	2022590000	1193860000	1257700000
KTBL QL 453820 S4E_*	18 x 15 x 8	458 x 382 x 200	1200380000	1200390000	1200410000	1200420000	1200430000	1193990000	2022590000	1193860000	1257700000
KTBL QL 484815 S4E_*	19 x 19 x 6	480 x 480 x 150	1200440000	1200450000	1200460000	1200470000	1200480000	1194000000	2022610000	1193870000	1257710000
KTBL QL 484820 S4E_*	19 x 19 x 8	480 x 480 x 200	1200490000	1200510000	1200520000	1200530000	1200540000	1194000000	2022610000	1193870000	1257710000
New KTBL QL 504015 S4E3	20 x 16 x 6	508 x 406 x 150	8000109899	8000109900		8000109901		8000110196	8000115916	8000115926	8000115905
New KTBL QL 504020 S4E0	20 x 16 x 8	508 x 406 x 200	8000109902	8000109903		8000109904		8000110196	8000115916	8000115926	8000115905
KTBL QL 553515 S4E_*	21 x 14 x 6	550 x 350 x 150	1200550000	1200560000	1200570000	1200580000	1200590000	1194010000	2022650000	1193880000	1257720000
KTBL QL 553520 S4E_*	21 x 14 x 8	550 x 350 x 200	1200610000	1200620000	1200630000	1200640000	1200650000	1194010000	2022650000	1193880000	1257720000
New KTBL QL 624020 S4E_*	24 x 16 x 8	620 x 406 x 200	8000109905	8000109906		8000109907		8000110198	8000115917	8000115927	8000115906
KTBL QL 624515 S4E_*	24 x 18 x 6	620 x 450 x 150	1200660000	1200670000	1200680000	1200690000	1200710000	1194020000	2022670000	1193890000	1257740000
KTBL QL 624520 S4E_*	24 x 18 x 8	620 x 450 x 200	1200720000	1200730000	1200740000	1200750000	1200760000	1194020000	2022670000	1193890000	1257740000
New KTBL QL 625015 S4E_*	24 x 20 x 6	620 x 508 x 150	8000109908	8000109909		8000109910		8000110199	8000115918	8000115928	8000115907
New KTBL QL 625020 S4E_*	24 x 20 x 8	620 x 508 x 200	8000109911	8000109912		8000109913		8000110199	8000115918	8000115928	8000115907
New KTBL QL 626215 S4E_*	24 x 24 x 6	620 x 620 x 150	8000109914	8000109915		8000109916		8000110200	8000115919	8000115929	8000115908
New KTBL QL 626220 S4E_*	24 x 24 x 8	620 x 620 x 200	8000109917	8000109918		8000109919		8000110200	8000115919	8000115929	8000115908
KTBL QL 765015 S4E_*	30 x 20 x 6	762 x 508 x 150	1200770000	1200780000	1200790000	1200810000	1200820000	1194030000	2022680000	1193900000	1257750000
KTBL QL 765020 S4E_*	30 x 20 x 8	762 x 508 x 200	1200830000	1200840000	1200850000	1200860000	1200870000	1194030000	2022680000	1193900000	1257750000
New KTBL QL 766215 S4E_*	30 x 24 x 6	762 x 620 x 150	8000109920	8000109921		8000109922		8000110201	8000115920	8000115930	8000115909
New KTBL QL 766220 S4E_*	30 x 24 x 8	762 x 620 x 200	8000109923	8000109924		8000109925		8000110201	8000115920	8000115930	8000115909
KTBL QL 916115 S4E_*	36 x 24 x 6	914 x 610 x 150	1200940000	1200950000	1200960000	1200970000	1200980000	1194040000	2022740000	1193910000	1257760000
KTBL QL 916120 S4E_*	36 x 24 x 8	914 x 610 x 200	1200880000	1200950000	1200960000	1200970000	1200980000	1194040000	2022740000	1193910000	1257760000
New KTBL QL 917620 S4E_*	36 x 30 x 8	914 x 762 x 200	8000109926	8000109927		8000109928		8000116040	8000115921	8000115931	8000115910
New KTBL QL 919120 S4E_*	36 x 36 x 8	914 x 914 x 200	8000109929	8000109930		8000109931		8000116041	8000115922	8000115932	8000115911
KTBL QL 987420 S4E_*	40 x 30 x 8	980 x 740 x 200	1200990000	1201010000	1201020000	1201030000	1201040000	1194050000	2022760000	1193920000	1257770000
KTBL QL Large 316SS QTL	KTBLQL1005030S4B1 LL1	40 x 20 x 12	1000 x 500 x 300		2698400000			**Included			
	KTBLQL1258040S4B1 LL1	50 x 31 x 16	1250 x 800 x 400		2698420000			**Included			
	KTBLQL15010050S4B1 LL1	60 x 40 x 20	1500 x 1000 x 500		2698430000			**Included			

Note: * KTB Large enclosures are offered in 1 GP version only as standard item. Custom design available. **Mounting plate screws sold separately # 0642600000 (4).
 *** Mounting Plates Sold Separately. Klippon® TB QL enclosures are subject to minimum order quantities.

Klippon® TB FS – Fixing Screw

Stainless steel enclosures for industrial areas and potentially explosive atmospheres

Klippon® TB enclosures have special performance features for growing safety requirements and challenging environmental conditions in the potentially explosive atmospheres of process industry and power generation plants. The Klippon® TB FS enclosure series complements our Klippon® TB MH and Klippon® TB QL standard enclosures. On request, we manufacture and deliver these enclosures custom-assembled with terminal blocks, electronic components and cable glands.

Features:

- Available in 12 sizes and 3 standard depths
- Equipped with up to four flange plates
- Gasket with compression protection
- Cover lock outside the sealed zone
- Improved temperature performance
- High protection classes: IP66 and IP67
- Integrated earth studs in the cover and lower section
- Welded mounting feet



Ordering Data

Description	Height x Width x Depth in inches	Height x Width x Depth in mm	0 Gland Plates	1 Gland Plate (below)	2 Gland Plates (above + below)	3 Gland plates (below + sides)	4 Gland plates (all sides)
KTB FS 221513 S4E_*	9 x 6 x 5	229 x 152 x 133	1195650000	1195660000	1195670000	1195680000	1195690000
KTB FS 262615 S4E_*	10 x 10 x 6	260 x 260 x 150	1195700000	1195710000	1195720000	1195730000	1195740000
KTB FS 262620 S4E_*	10 x 10 x 8	260 x 260 x 200	1195750000	1195760000	1195770000	1195780000	1195790000
KTB FS 303015 S4E_*	12 x 8 x 6	306 x 203 x 150	1195800000	1195810000	1195820000	1195830000	1195840000
KTB FS 303020 S4E_*	12 x 12 x 6	306 x 306 x 150	1195850000	1195860000	1195870000	1195880000	1195890000
KTB FS 352615 S4E_*	12 x 12 x 8	306 x 206 x 200	1195900000	1195910000	1195920000	1195930000	1195940000
KTB FS 352620 S4E_*	14 x 10 x 6	350 x 260 x 150	1195950000	1195960000	1195970000	1195980000	1195990000
KTB FS 403015 S4E_*	16 x 12 x 6	400 x 300 x 150	1196000000	1196010000	1196020000	1196030000	1196040000
KTB FS 403020 S4E_*	16 x 12 x 8	400 x 300 x 200	1196050000	1196060000	1196070000	1196080000	1196090000
KTB FS 453815 S4E_*	18 x 15 x 6	458 x 382 x 150	1196100000	1196110000	1196120000	1196130000	1196140000
KTB FS 453820 S4E_*	18 x 15 x 8	458 x 382 x 200	1196150000	1196160000	1196170000	1196180000	1196190000
KTB FS 484815 S4E_*	19 x 19 x 6	480 x 480 x 150	1196200000	1196210000	1196220000	1196230000	1196240000
KTB FS 484820 S4E_*	19 x 19 x 8	480 x 480 x 200	1196250000	1196260000	1196270000	1196280000	1196290000
KTB FS 553515 S4E_*	21 x 14 x 6	550 x 350 x 150	1196300000	1196310000	1196320000	1196330000	1196340000
KTB FS 553520 S4E_*	21 x 14 x 8	550 x 350 x 200	1196350000	1196360000	1196370000	1196380000	1196390000
KTB FS 624515 S4E_*	24 x 18 x 6	620 x 450 x 150	1196400000	1196410000	1196420000	1196430000	1196440000
KTB FS 624520 S4E_*	24 x 18 x 8	620 x 450 x 200	1196450000	1196460000	1196470000	1196480000	1196490000
KTB FS 765015 S4E_*	30 x 20 x 6	762 x 508 x 150	1196500000	1196510000	1196520000	1196530000	1196540000
KTB FS 765020 S4E_*	30 x 20 x 8	762 x 508 x 200	1196550000	1196560000	1196570000	1196580000	1196590000
KTB FS 916115 S4E_*	36 x 24 x 6	914 x 610 x 150	1196600000	1196610000	1196620000	1196630000	1196640000
KTB FS 916120 S4E_*	36 x 24 x 8	914 x 610 x 200	1196650000	1196660000	1196670000	1196680000	1196690000
KTB FS 987420 S4E_*	40 x 30 x 8	980 x 740 x 200	1196700000	1196710000	1196720000	1196730000	1196740000

Note * Placeholder for the number of gland plates (0, 1, 2, 3, 4). The Klippon® TB FS enclosures are subject to minimum order quantities.

Technical Data

Enclosure material*	Stainless steel 1.4404 (316L) 1.5 mm
Surface finish	electropolished
IP protection class	IP66 / IP67 to DIN EN 60529
NEMA protection classes	3, 4x, 12
Gland plates	1-4 (fixed with M6 hexagon head screws with 10 mm heads), optionally without a gland plate
Gland plate thickness	3 mm (other thickness are available on request)
Earthing inside	Enclosure base and lid: welded M6 stainless steel earth studs
Earthing outside	Continuous M10 brass earth stud (optionally with stainless-steel earth stud)
Installation mounting	4 or 9 mounting bolts with M6 threaded holes to attach the mounting plate or mounting rail
Enclosure attachment	4 or 6 welded mounting feet with 11-mm holes (2 slotted and 2 cross-shaped openings)
Lid opening	Lid can be fully removed without the use of tools
Cover attachment	M6 hexagonal slotted screws AF 10
Impact resistance	7J to IEC 60079-0, IK 09 (10J) to DIN EN 50102
Gasket material	Silicone
Operating temperature range	-60 °C...+105 °C (IP66/IP67), -60 °C...+135 °C (IP66)
Torque – lid and gland plate screws	2.5 Nm
Note	*Painted enclosures are available on request.

Klippon® STB – Small Terminal Box

316L Stainless Steel Enclosures

Ideally suited for the energy, process and transportation industries, the Klippon® STB range is the perfect complement to our existing Klippon® enclosure product line. Our enclosures comply with international standards.

Some of the many advantages of these cases are:

- Available in stainless steel or in powder-coated painted steel
- Higher temperature resistant seals than the standard
- Flexible options when mounting the internal rail
- The gasket is protected against compression; ensuring that a permanent and secure seal is maintained.
- Earth studs in the lid and in the enclosure base
- Lasered welding seams offer improved quality
- Delivered with welded mounting feet to ensure a sturdy enclosure installation



Class 1 Div 2 A,B,C,D, Zone 1, Zone 2, 21, 22; AEx eb, AEx ta; Ex eb, Ex tb



Discover more in our Weidmüller Configurator:

www.weidmuller.com/wmc

Ordering Data

Description	Height x Width x Depth in inches	Height x Width x Depth in mm	Mirror-polish	Electropolished	Powder-coated (RAL7032)
Klippon® STB 1	4.75 x 4.75 x 3.15	120 x 120 x 80	1002690000	1058810000	1024970000
Klippon® STB 1.1	5.90 x 4.75 x 3.15	150 x 120 x 80	1002750000	1058820000	1024980000
Klippon® STB 2	5.90 x 5.90 x 3.51	150 x 150 x 90	1002740000	1058830000	1024990000
Klippon® STB 2.1	7.50 x 5.90 x 3.51	190 x 150 x 90	1002730000	1058840000	1025010000
Klippon® STB 3	7.50 x 7.50 x 3.95	190 x 190 x 100	1002720000	1058850000	1025020000
Klippon® STB 4	8.42 x 8.42 x 4.75	250 x 250 x 120	1002710000	1058860000	1025030000
Klippon® STB 5	6.30 x 14.96 x 4.75	160 x 380 x 120	1002700000	1058880000	1025040000
Klippon® STB 6	7.50 x 15.75 x 5.12	250 x 400 x 130	1002760000	1058870000	1025050000

Technical Overview

Features

- Mirror-polished or electropolished stainless steel 1.4404 (316L) or powder coated steel sheet 1.0330
- Fitted with a welded, internal C-profile rail (TAS 20) and mounting feet
- Laser cut weld seams
- Approved according to the latest international standards

Note We deliver enclosures through our assembly service which are ready to be connected and suitable for every application

Technical Data

	Stainless steel	Sheet steel
Enclosure material	Stainless steel 1.4404 (316L) in 1.50 mm	Steel sheet 1.0330 in 1.50 mm
Surface finish	Mirror-polished, electropolished	Powder-coated RAL 7032
IP protection class	IP 66	IP 66
NEMA Rating	4, 4x, 6, 6P	
Earthing	Enclosure base part: internal / external M6 stainless steel Lid: M6 x 10 stainless steel	Enclosure base part: internal / external M6 stainless steel Lid: M6 x 10 stainless steel
Installation mounting	Welded C-profile rail	Welded C-profile rail
Enclosure attachment	2 external mounting feet with 8 mm holes	2 external mounting feet with 8 mm holes
Lid opening	Completely removable lid with 4 x M5 screws	Completely removable lid with 4 x M5 screws
Impact resistance	7J in accordance with IEC 60079-0	10J industrial version in accordance with DIN EN 50102
Gasket material	Silicone -60 °C...+100 °C *	Silicone -60 °C...+120 °C
Lid screws, torque	2.5 Nm	2.5 Nm
Note	* +120 °C only for industrial applications	

Approvals for empty enclosures

	Stainless steel	Sheet steel
ATEX certificate	IBExU07ATEX1147 U	
ATEX marking	⊕ II 2G Ex eb IIC Gb , ⊕ II 1G Ex ia IIC Ga, ⊕ II 2D Ex tb IIIC Db	
IECEx certificate	IECEx IBE 09.0018U	
IECEx marking	Ex eb IIC Gb, Ex ia IIC Ga, Ex tb IIIC Db	
AEx	E223792	
cULus	E197061 and E256877	
Lloyds Register	08/20032	08/20032
INMETRO	in preparation	
EAC	C-DE.HB07.B.00089/20 / C-DE.AQ54.B.00251/19	C-DE.HB07.B.00089/20 / C-DE.AQ54.B.00251/19

Note: This enclosure range is component certified. If other electrical components are inserted into the case, additional certification is required.

Klippon® K – Aluminium Enclosures

Klippon® K-Series aluminium enclosures can be used in a variety of applications, e.g. for the assembly of modular terminal blocks, switches, power supplies, operational and display elements or electronic modules.

The extensive Klippon® K enclosure range has the following advantages:

- More flexibility – 19 different sizes
- Available in two surface finishes – powder-coated and natural
- Mounting holes not within the sealed area
- Fastening thread to attach mounting rails and plates
- Closed moulded gasket (no glue seam)

Weidmüller manufactures and supplies the enclosures to match customer specifications – fully fitted with terminals, electronics and cable glands.



Discover more in our Weidmüller Configurator:

www.weidmuller.com/wmc



Ex enclosures are Class 1 Div 2 A,B,C,D, Zone 1, Zone 2, 21, 22; AEx eb, AEx ta; Ex eb, Ex tb

Ordering Data

Description	Height x Width x Depth in inches	Height x Width x Depth in mm	Powder-coated (RAL 7001)*			Unpainted		
			Standard		Ex Enclosure**	Standard		Ex enclosure**
			CR moulded seal	Silicone moulded seal**	Silicone moulded seal	CR moulded seal	Silicone moulded seal**	Silicone moulded seal
Klippon® K 0	1.77 x 1.97 x 1.18	45 x 50 x 30	9529090000	1937920000		0573200000	1939760000	
Klippon® K 01	2.52 x 2.28 x 1.34	64 x 58 x 34	9529100000	1937850000		1565240000	1939540000	
Klippon® K 02	2.52 x 3.86 x 1.34	64 x 98 x 34	9529110000	1937840000		1565250000	1939550000	
Klippon® K 1	2.75 x 2.75 x 1.77	70 x 70 x 45	9529120000	1937630000	1329630000	0342000000	1939560000	9526840000
Klippon® K 11	3.15 x 2.95 x 2.25	80 x 75 x 57	9529130000	1937910000	1329640000	0573300000	1939570000	9526850000
Klippon® K 2	2.75 x 3.94 x 1.77	70 x 100 x 45	9529140000	1937930000	1329650000	0342100000	1939580000	9526860000
Klippon® K 21	3.15 x 4.92 x 2.25	80 x 125 x 57	9529150000	1937830000	1328120000	0573400000	1939590000	9526870000
Klippon® K 3	2.75 x 6.94 x 1.77	70 x 165 x 45	9529160000	1937900000	1329670000	0342200000	1939600000	9526880000
Klippon® K 31	3.15 x 6.89 x 2.25	80 x 175 x 57	9529170000	1937820000	1329680000	0573500000	1939610000	9526890000
Klippon® K 32	3.15 x 9.84 x 2.16	80 x 250 x 55	9529180000	1937810000	1329690000	1565260000	1939620000	9526900000
Klippon® K 4	3.23 x 5.12 x 2.83	82 x 130 x 72	9529190000	1937890000	1329700000	0342300000	1939630000	9526910000
Klippon® K 41	4.72 x 4.80 x 3.15	120 x 122 x 81	9529200000	1937800000	1329710000	1565270000	1939640000	9526920000
Klippon® K 5	5.12 x 6.69 x 3.54	130 x 170 x 90	9529210000	1937860000	1329720000	0342400000	1939650000	9526930000
Klippon® K 51	4.72 x 8.66 x 3.19	120 x 220 x 81	9529220000	1937750000	1328130000	1565280000	1939660000	9526940000
Klippon® K 52	6.30 x 6.30 x 3.58	160 x 160 x 91	9529230000	1937740000	1329730000	1565290000	1939670000	9526950000
Klippon® K 6	6.30 x 7.87 x 3.94	160 x 200 x 100	9529240000	1937870000	1329740000	0342500000	1939690000	9526960000
Klippon® K 61	6.30 x 10.24 x 3.58	160 x 260 x 91	9529250000	1937730000	1328140000	0573600000	1939700000	9526970000
Klippon® K 7	6.30 x 13.78 x 3.94	160 x 350 x 100	9529260000	1937880000	1329750000	0342600000	1939710000	9526980000
Klippon® K 71	9.06 x 11.02 x 4.37	230 x 280 x 111	9529270000	1937720000	1329770000	0573700000	1939730000	9526990000

Note *Colour variations may occur under certain circumstances, **Delivery time on request, Ex enclosures available on request

Technical Overview

Features

- Two surfaces: natural and powder-coated
- High IP protection up to IP68
- Moulded silicone gasket for applications with high temperatures
- A uniform Torx®-slotted screw head is used for over 19 different enclosure sizes.
- Alloy is resistant to salt water
- Approved according to the latest international standards

Note We deliver enclosures through our assembly service which are ready to be connected and suitable for every application

Approvals for empty enclosures

	Ex	Standard
ATEX certificate	IBExU12ATEX1144 U	
ATEX marking	II 2G Ex e IIC Gb or II 2G Ex eb IIC II 2D Ex t IIC Db or II 2D Ex tb IIC	
IECEX certificate	IECEX IBE 13.0001U	
IECEX marking	Ex e IIC Gb or Ex eb IIC Ex tb IIC Db or Ex tb IIC	
EAC	C-DE.HB07.B.00089/20	C-DE.HB07.B.00089/20 / C-DE.AQ54.B.00251/19
cULus	cULus E197061 (Ord. Loc.)	E197061
Russian Maritime Register	19.00108.272	19.00108.272
DNV GL	TAE00002SM	TAE00002SM
Installation	The Klippon® K enclosure range can be pre-fitted in our customer specific production department according to your wishes.	

Note This enclosure range is component certified. If other electrical components are inserted into the case, additional certification is required.

Klippon® POK – Fiberglass Reinforced Polyester Enclosures

The Klippon® POK range of polyester enclosures is designed to protect and integrate with general purpose electrical and electronic equipment as well as control components in harsh environments or potentially explosive atmospheres. Our customer-specific assembly service can provide a fully customized enclosure solution.

Features:

- For use in potentially explosive atmospheres and industrial applications
- Extremely robust with a high impact resistance
- Approved to the latest international standards
- M4 or M6 mounting elements integrated into enclosure body for installation of mounting plates, mounting rails, printed circuit boards etc.
- Material: UV Resistant Fiberglass Reinforced Polyester
- IP Rating: IP66/IP67 NEMA 4/4X
- Temperature Rating: -50C to 130C (Gray Cover)
- Flame Rating: UL94V0



Ex enclosures are Class 1 Div 2 A,B,C,D, Zone 1, Zone 2, 21, 22; AEx eb, AEx ta; Ex eb, Ex tb

Ordering Data

Description	Height x Width x Depth in inches	Height x Width x Depth in mm	Standard (grey finish)	Ex Enclosures (black finish)	Reference Product
Klippon® POK 080806	2.95 x 3.15 x 2.17	75 x 80 x 55	1305810000	1306000000	Klippon® POK 1
Klippon® POK 081106	2.95 x 4.33 x 2.21	75 x 110 x 56	1305820000	1306010000	Klippon® POK 2
Klippon® POK 081606	2.95 x 6.30 x 2.21	75 x 160 x 56	1305830000	1306020000	Klippon® POK 3
Klippon® POK 081906	2.95 x 7.48 x 2.17	75 x 190 x 55	1305840000	1306030000	Klippon® POK 31
Klippon® POK 082306	2.95 x 9.06 x 2.21	75 x 230 x 56	1305850000	1306040000	Klippon® POK 32
Klippon® POK 121209	4.72 x 4.80 x 3.54	120 x 122 x 90	1305870000	1306050000	Klippon® POK 4
Klippon® POK 122209	4.72 x 8.66 x 3.54	120 x 220 x 90	1305880000	1306070000	Klippon® POK 5
Klippon® POK 161609	6.30 x 6.30 x 3.54	160 x 160 x 90	1305890000	1306080000	Klippon® POK 51
Klippon® POK 162609	6.30 x 10.24 x 3.54	160 x 260 x 90	1305900000	1306090000	Klippon® POK 6
Klippon® POK 163609	6.30 x 14.17 x 3.54	160 x 360 x 90	1305910000	1306100000	Klippon® POK 7
Klippon® POK 165609	6.30 x 22.01 x 3.54	160 x 560 x 90	1305920000	1306110000	Klippon® POK 71
Klippon® POK 252512	9.84 x 10.04 x 4.72	250 x 255 x 120	1305930000	1306120000	Klippon® POK 8
Klippon® POK 252516	9.84 x 10.04 x 6.30	250 x 255 x 160.5	1305980000	1306170000	Klippon® POK 9
Klippon® POK 254012	9.84 x 15.75 x 4.72	250 x 400 x 120	1305940000	1306130000	Klippon® POK 91
Klippon® POK 254016	9.84 x 15.75 x 6.30	250 x 400 x 160.5	1305990000	1306180000	Klippon® POK 10
Klippon® POK 256012	9.84 x 23.62 x 4.72	250 x 600 x 120	1305950000	1306140000	Klippon® POK 11
Klippon® POK 404012	15.75 x 15.75 x 4.72	405 x 400 x 120	1305970000	1306150000	Klippon® POK 12

Technical Data

	Ex	Standard
Enclosure material	Glass fibre-reinforced polyester to DIN 16913 with added graphite	Glass fibre-reinforced polyester to DIN 16913
Surface	Black, similar to RAL 9011	Grey, similar to RAL7001
IP Rating	IP 66 to DIN EN 60529	IP 66 to DIN EN 60529
NEMA Rating	4, 4x	4, 4x
Equipment mounting	M4 to M6 threaded bushes	M4 to M6 threaded bushes
Enclosure mounting	4 holes for M4 to M6 screw	4 holes for M4 to M6 screw
Lid fixing	M4/M6 slothead / crosshead screws from stainless steel	M4/M6 slothead / crosshead screws from stainless steel
Impact Resistance	7J to IEC 60079-0	IK08 (5J) to DIN EN 50102
Gasket material	Silicone (VMQ)	Chloroprene
Temperature range	-55 °C...+100 °C	-40 °C...+100 °C
Torque screws of lid M4	2.0 - 2.5 Nm	2.0 - 2.5 Nm
Torque screws of lid M6	2.5 - 3.0 Nm	2.5 - 3.0 Nm
Surface resistance (in ohms)	< 10 ⁹ Ohm	10 ¹² Ohm
Flammability	UL 94 V0, self extinguishing	UL 94 V0, self extinguishing
Toxicity	Halogen and cadmium-free	

Approvals for empty enclosures

	Ex	Standard
ATEX certificate	IBExU13ATEX1003 U	
ATEX marking	⊕ II 2G Ex e IIC Gb or ⊕ II 2G Ex eb IIC ⊕ II 2D Ex tb IIIC Db or ⊕ II 2D Ex tb IIIC	
IECEX certificate	IECEX IBE 13.0003U	
IECEX marking	Ex e IIC Gb or Ex eb IIC Ex tb IIIC Db or Ex tb IIIC	
EAC	C-DE.HB07.B.00089/20	C-DE.HB07.B.00089/20 / C-DE.AQ54.B.00251/19
cULus	E256877	E256877
Lloyd's Register	14/20001	14/20001
Russian Maritime Register	19.00109.272	
DNV GL	TAE00002R2	TAE00002R2
AEx	E223792	
CCCEX	2020322303003288	

Cable Glands & Accessories

Features:

- Glands are certified Flameproof Ex db, Increased Safety Ex eb, Restricted Breathing Ex nR and Dust Protected Ex ta
- Approved for Zone 1 and 2 for Gas Groups IIA, IIB and IIC, Zones 20, 21 and 22 for Dust Groups IIIA, IIIB and IIIC
- Certified for Zone and Division installations for use with Marine Shipboard and Tray Cables under the NEC and CEC
- "Stuffing glands" provide a controlled pull resistant environmental displacement seal on the cable outer sheath, minimizing damage to cables that exhibit "cold flow" characteristics.
- Maintains IP66 & IP68 to 50 meters
- IP O-ring seal as standard on metric entry threads
- Material: Nickel Plated Brass w/ Neoprene O-Ring/Gasket
- Temperature Rating: -35°C to 90°C
- The "A2L" version is designed to accommodate Unarmored and Armored cables where sealing and retention is required only on the outer sheath.

Compliance Standards:

- EN 60079-0, EN 60079-1, EN 60079-7, EN 60079-15, EN 60079-31
- IEC 60079-0, IEC 60079-1, IEC 60079-7, IEC 60079-31 & IEC 60529
- C22.2, CAN/CSA 60079-0/1/7/31
- UL514B, UL1203, UL2225, UL50E, ANSI/UL 60079-0/7, ISA 60079-31

Approvals



Cable Glands



Fig. 1: Nickel Plated Brass Gland Kit for Unarmored Cable



Fig. 2: Fully Nickel Plated Brass Marine Shipboard Gland Kit for Unarmored Cable



Fig. 3: Brass Marine Shipboard Barrier Gland Kit for Armored, Jacketed or Non-Jacketed Cable

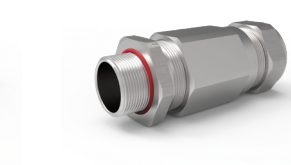


Fig. 4: Universal Nickel Plated Brass Gland Kit IP66 & 68 for Armored Cable

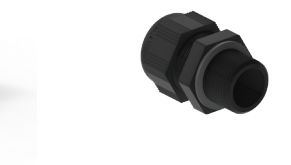


Fig. 5: Nylon Cable Glands - Industrial - Non-Hazardous

Accessories

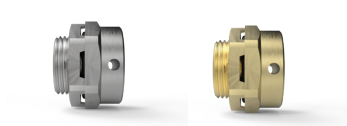


Fig. 6: Stainless Steel & Brass Breather Drains



Fig. 7: Earth Tags



Fig. 8: Locknuts

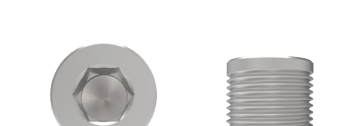


Fig. 9: Stopping Plugs

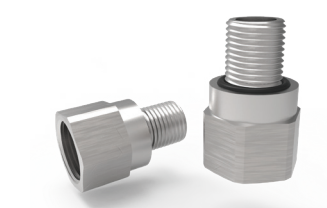


Fig. 10: Adaptors & Reducers



Fig. 11: Serrated Washers



Fig. 12: Shrouds




Fig. 13: Nylon Sealing Washers

Cable Glands


Approvals




Nickel Plated Brass Gland Kit for Unarmored Cable IP66 & 68 c/w Locknut & Nylon Sealing Washer, Class 1 Div 2 A,B,C,D, Zone 1, Zone 2, 21, 22; AEx e, AEx ta; Ex db, Ex eb, Ex nR, Ex ta

Order Number	Model	Description	Box Qty	Gland		Entry Thread Size		Thread Length (B)	Outer Sheath (D) mm		Nominal Length (L)	Dimensions		Weight (kgs)	Shroud Size (Metric)
				Size	Metric	NPT	Min		Max	Across Flats (A)		Across Corners			
															
2880570000	A2LBFK1/NP/16/050NPT	1/2" NPT Cable OD range .158-.331"	40	16	M20 x 1.5	1/2" or 3/4"	16	4	8.4	33	25.4	28	0.104	L24**	
2880580000	A2LBFK1/NP/20/050NPT	1/2" NPT Cable OD range .370-.551"	30	20	M20 x 1.5	1/2" or 3/4"	16	9.4	14	33	30	33	0.127	L30	
2880590000	A2LBFK1/NP/20/075NPT	3/4" NPT Cable OD range .370-.551"	30	20	M20 x 1.5	1/2" or 3/4"	16	9.4	14	33	30	33	0.127	L30	
2880600000	A2LBFK1/NP/25/075NPT	3/4" NPT Cable OD range .532-m.787"	20	25	M25 x 1.5	3/4" or 1"	16	13.5	20	33	37.6	41.4	0.166	L38	
2880610000	A2LBFK1/NP/32/100NPT	1" NPT Cable OD range .768-1.04"	10	32	M32 x 1.5	1" or 1 1/4"	16	19.5	26.3	33	46	50.6	0.244	L46	
2880620000	A2LBFK1/NP/40/150NPT	1-1/2" NPT Cable OD range .906-1.27"	10	40	M40 x 1.5	1 1/4" or 1 1/2"	16	23	32.2	37	55	60.5	0.396	L55	
2880630000	A2LBFK1/NP/50/200NPT	2" NPT Cable OD range 1.30-1.74"	6	50	M50 x 1.5	2"	16	33.1	44.1	37	65	71.5	0.438	L65	
2881760000	A2LBF/NP/16/M16	M16 Cable. OD range 4.0-8.4mm	104	16	M16 x 1.5	3/6" or 1/2"	16	4	8.4	33	25.4	28	0.097	L24	
1911560000	A2LBF/NP/20/M20	M20 Cable. OD range 9.4-14.0mm	68	20	M20 x 1.5	1/2" or 3/4"	16	9.4	14	33	30	33	0.127	L30	
1911570000	A2LBF/NP/25/M20	M25 Cable. OD range 13.5-20.0mm	45	25	M25 x 1.5	3/4" or 1"	16	13.5	20	33	37.6	41.4	0.166	L38	
1911580000	A2LBF/NP/32/M32	M32 Cable. OD range 19.5-26.3mm	30	32	M32 x 1.5	1" or 1 1/4"	16	19.5	26.3	33	46	50.6	0.244	L46	
1911590000	A2LBF/NP/40/M40	M40 Cable. OD range 23.0-32.2mm	18	40	M40 x 1.5	1 1/4" or 1 1/2"	16	23	32.2	37	55	60.5	0.396	L55	

Fully Nickel Plated Brass Marine Shipboard Gland Kit for Unarmored Cable c/w Locknut and Nylon Washer – Temp Rating: -40°C to 135°C – Gasket: Silicone Seal with Nylon Washer – Nema 4X, IP66, IP68; Class 1 Div 2 A,B,C,D; Class II Div1; Class III; Zone 1, Zone 2, 20,21, 22; AEx d, AEx e, AEx ta; Ex db, Ex eb, Ex nR, Ex ta

Order Number	Model	Description	Box Qty	Gland Size	Entry Thread Size (In.)	ISO Thread Thread Length	NPT Thread Length	Cable Inner Sheath		Cable Outer Sheath		Protrusion Length	Dimensions		Weight lbs	Shroud Size	
								# of Cores IEC	NEC	Max	Min		Max	Across Flats			Across Corners
																	
2880640000	UL-UBK1/NP/16/050NPT	1/2" NPT Cable OD range 0.134-0.331in	25	16	1/2" or 3/4"	0.63	0.783 - 0.795	15	1	0.409	0.134	0.331	2.717	1.00	1.102	0.602	EL24*
2880650000	UL-UBK1/NP/25/075NPT	3/4" NPT Cable OD range 0.461-0.787in	14	25	3/4" or 1"	0.63	0.795 - 0.985	60	16	0.701	0.461	0.787	2.953	1.48	1.63	1.12	EL38
2880660000	UL-UBK1/NP/32/100NPT	1" NPT Cable OD range 0.713-1.035in	14	32	1" or 1 1/4"	0.63	0.985 - 1.008	80	30	0.925	0.713	1.035	3.425	1.81	1.992	1.797	EL46
2880670000	UL-UBK1/NP/40/150NPT	1-1/2" NPT Cable OD range 0.890-1.268in	10	40	1 1/4" or 1 1/2"	0.63	1.008 - 1.024	130	60	1.134	0.89	1.268	3.543	2.17	2.832	2.577	EL55
2880680000	UL-UBK1/NP/50/200NPT	2" NPT Cable OD range 1.303-1.736in	6	50	2"	0.63	1.059	400	5	1.551	1.303	1.736	3.937	2.56	2.815	3.263	EL65


Brass Marine Shipboard Barrier Gland Kit for Armored, Jacketed or Non-Jacketed Cable (w/ Locknut, Earth Tag & Nylon Sealing Washer) – Temp. Rating: -40°C to 135°C – Gasket: Internal Silicone Seal w/ Nylon Washer – Nema 4X, IP66, IP68; Class 1 Div 1 A,B,C,D; Class II Div1; Class III; Zone 1, Zone 2, 20,21, 22; AEx d, AEx e, AEx ta; Ex db, Ex eb, Ex nR, Ex ta

Order Number	Model	Description	Box Qty	Gland Size	Entry Thread Size (In.)	ISO Thread Thread Length	NPT Thread Length	Cable Inner Sheath		Cable Outer Sheath		Protrusion Length	Dimensions		Weight lbs	Shroud Size	
								# of Cores IEC	NEC	Max	Min		Max	Across Flats			Across Corners
																	
2880770000	UL-CBK1/NP/16/050NPT	1/2" NPT Cable. Max ID 0.461". OD .362-0.531"	25	16	1/2" or 3/4"	0.63	0.783 - 0.795	15	1	0.409	0.134	0.331	2.717	1.00	1.102	0.602	EL24*
2880780000	UL-CBK1/NP/25/075NPT	3/4" NPT Cable. Max ID 0.787". OD 0.799-1.079"	20	25	3/4" or 1"	0.63	0.795 - 0.985	60	16	0.701	0.461	0.787	2.953	1.48	1.63	1.12	EL38
2880790000	UL-CBK1/NP/32/100NPT	1" NPT Cable. Max ID 1.035" OD 1.035-1.051"	14	32	1" or 1 1/4"	0.63	0.985 - 1.008	80	30	0.925	0.713	1.035	3.425	1.81	1.992	1.797	EL46
2880800000	UL-CBK1/NP/40/150NPT	1-1/2" NPT Cable. Max ID 1.268" OD 1.299-1.598"	10	40	1 1/4" or 1 1/2"	0.63	1.008 - 1.024	130	60	1.134	0.89	1.268	3.543	2.17	2.832	2.577	EL55
2880810000	UL-CBK1/NP/50/200NPT	2" NPT Cable. Max ID 1.736" OD 1.799-2.094"	6	50	2"	0.63	1.059	400	5	1.551	1.303	1.736	3.937	2.56	2.815	3.263	EL65

Cable Glands


Universal Nickel Plated Brass Gland Kit IP66 & 68 for Armored Cable (c/w locknut, earth tag, nylon sealing washer)

Flameproof; Nema 4X, IP66, IP68; Class 1 Div 2 A,B,C,D; Class II Div1 E,F,G, Class 3, Zone 1, Zone 2 IIA, IIB, IIC; 20,21, 22 IIIA, IIIB, IIIC; AEx e, AEx ta; Ex db, Ex eb, Ex nr, Ex ta

Order Number	Model	Description	Box Qty	Gland	Entry Thread Size			Thread Length (B)	Inner Sheath (C)		Outer Sheath (D)		Reduced (D)		Armor Acceptance Range	Nominal Protrusion Length (L)	Dimensions		Weight (kgs)	Shroud Size (Metric)
					Size	Metric	NPT		Min	Max	Min	Max	Min	Max			Across Flats (A) (mm)	Across Corners (mm)		
 Fig. 4 Pg. 11																				
2880690000	CR-1BK1/NP/16/050NPT	1/2" NPT Cable OD .134-.33" - .33-.53"	25	16	M20 x 1.5	1/2" or 3/4"	16	3.4	8.4	8.4	13.5	6.7	10.3	0.15-1.25	78	25.4	28	0.178	EL24*	
2880700000	CR-1BK1/NP/20/050NPT	1/2" NPT Cable OD .370-.551" - .61-.83"	25	20	M20 x 1.5	1/2" or 3/4"	16	9.4	14	15.5	21.1	12	17.6	0.15-1.25	78	30	33	0.233	EL30	
2880710000	CR-1BK1/NP/20/075NPT	3/4" NPT Cable OD .370-.551" - .61-.83"	25	20	M20 x 1.5	1/2" or 3/4"	16	9.4	14	15.5	21.1	12	17.6	0.15-1.25	78	30	33	0.233	EL30	
2880720000	CR-1BK1/NP/25/075NPT	3/4" NPT Cable OD .33-.78" - .78-1.08"	20	25	M25 x 1.5	3/4" or 1"	16	13.5	20	20.3	27.4	16.8	23.9	0.15-1.60	90	37.6	41.4	0.416	EL38	
2880730000	CR-1BK1/NP/32/100NPT	1" NPT Cable OD .77-1.05 - 1.05-1.34"	8	32	M32 x 1.5	1" or 1 1/4"	16	19.5	26.3	26.7	34	23.2	30.5	0.15-2.00	105	46	50.6	0.772	EL46	
2880740000	CR-1BK1/NP/40/150NPT	1-1/2" NPT Cable OD .91-1.27 - 1.30-1.60"	5	40	M40 x 1.5	1 1/4" or 1 1/2"	16	23	32.2	33	40.6	28.6	36.2	0.20-2.00	113	55	60.5	1.093	EL55	
2880750000	CR-1BK1/NP/50/200NPT	2" NPT Cable OD .91-1.74 - 1.80-2.09"	4	50	M50 x 1.5	2"	16	33.1	44.1	45.7	53.2	41.1	48.5	0.30-2.50	125	65	71.5	1.4	EL65	
2880760000	CR-1B/NP/16/M20	M20 Cable ID 3.4-8.4mm OD 8.4-13.5mm	60	16	M20 x 1.5	3/4" or 1"	16	3.4	8.4	8.4	13.5	6.7	10.3	0.15-1.25	78	25.4	28	0.178	EL24*	
1911400000	CR-1B/NP/20/M20	M20 Cable ID 9.4-14.0mm OD 15.5-21.1mm	45	20	M20 x 1.5	1/2" or 3/4"	16	9.4	14	15.5	21.1	12	17.6	0.15-1.25	78	30	33	0.233	EL30	
1911420000	CR-1B/NP/25/M25	M25 Cable ID 13.5-20.0mm OD 20.3-27.4mm	20	25	M25 x 1.5	3/4" or 1"	16	13.5	20	20.3	27.4	16.8	23.9	0.15-1.60	90	37.6	41.4	0.416	EL38	
1911430000	CR-1B/NP/32/M32	M32 Cable ID 19.5-26.3mm OD 26.7-34.0mm	8	32	M32 x 1.5	1" or 1 1/4"	16	19.5	26.3	26.7	34	23.2	30.5	0.15-2.00	105	46	50.6	0.772	EL46	
1911440000	CR-1B/NP/40/M40	M40 Cable ID 23.0-32.2mm OD 33.0-40.6mm	7	40	M40 x 1.5	1 1/4" or 1 1/2"	16	23	32.2	33	40.6	28.6	36.2	0.20-2.00	113	55	60.5	1.093	EL55	

Note: * A/F = distance across face of locknut; A/C = across corners of locknut

Nylon Cable Glands - Industrial - Non-Hazardous ATEX; IECEx, cCSAus; IP68; Ex eb; Ex tb; Zone 1, Zone 2, 21, 22

Order Number	Model	Description	Box Qty	Gland	Entry Thread Size	Thread Length	Protrusion Length	Dimensions		Weight
								Size	Thread Size (In.)	
 Fig. 5 Pg. 11										
2881150000	PF8041200	Nylon Cable Gland Industrial 1/2" NPT for cable Ø 7-12mm .28-.47" Black	75	20	1/2" NPT	14.00	27.00	24.00	26.80	0.01
2881160000	PF8042000	Nylon Cable Gland Industrial 3/4" NPT for cable Ø 12-18mm .47-.71" Black	30	25	3/4" NPT	15.00	35.00	33.00	37.00	0.021
2881170000	PF8042800	Nylon Cable Gland Industrial 1" NPT for cable Ø 16-25mm .63-.98" Black	30	32	1" NPT	18.00	41.00	42.00	47.00	0.038
2881180000	PF8021650	Nylon Cable Gland Industrial M16 for cable Ø 5-8mm .10-.31" Black	75	16	M16 x 1.5	10.00	28.00	19.00	22.00	0.009
2881190000	PF8022050	Nylon Cable Gland Industrial M20 for cable Ø 7-12mm .28-.47" Black	75	20	M20 x 1.5	10.00	28.00	24.00	28.00	0.01
2881200000	PF8022550	Nylon Cable Gland Industrial M25 for cable Ø 10-14mm .28-.55" Black	30	25	M25 x 1.5	10.00	36.00	33.00	37.00	0.021
2881210000	PF8023200	Nylon Cable Gland Industrial M32 for cable Ø 16-25mm .55-.98" Black	30	32	M32 x 1.5	10.00	42.00	42.00	47.00	0.038

Note: * A/F = distance across face of locknut; A/C = across corners of locknut



Fig. 6 Pg. 11

Breather Drain Stainless Steel or Brass IP66 c/w castellated Locknut Class 1 Zone 1, Zone 2, 20,21, 22; AEx eb, AEx ta; Ex eb, Ex ta

Order Number	Model	Description	Box Qty	Thread Size	A/F*	A/C*	Length (R)	Length (L)	Weight (kgs)
					mm	mm			
2881360000	ACDP1SE/NP/050NPT	1/2" NPT Stainless Steel Breather Drain IP66 c/w castellated locknut Ex e, ATEX, IECEx, CSA, GOST	100	1/2" NPT	28.6	31.4	15.0	12.0	0.075
2881370000	ACDP1SE/NP/075NPT	3/4" NPT Stainless Steel Breather Drain IP66 c/w castellated locknut Ex e, ATEX, IECEx, CSA, GOST	50	3/4" NPT	33.0	36.3	15.0	12.0	0.107
2881380000	ACDP1SE/NP/M20	M20 Stainless Steel Breather Drain IP66 c/w castellated locknut Ex e, ATEX, IECEx, CSA, GOST	100	M20 x1.5	27.0	29.7	10.0	12.0	0.065
2881390000	ACDP1SE/NP/M25	M25 Stainless Steel Breather Drain IP66 c/w castellated locknut Ex e, ATEX, IECEx, CSA, GOST	25	M25 x 1.5	31.8	34.9	10.0	12.0	0.097
2881400000	ACDP1BE/NP/050NPT	1/2" NPT NP Brass Breather Drain IP66 c/w castellated locknut Ex e, ATEX, IECEx, CSA, GOST	100	1/2" NPT	28.6	31.4	15.0	12.0	0.075
2881410000	ACDP1BE/NP/075NPT	3/4" NPT NP Brass Breather Drain IP66 c/w castellated locknut Ex e, ATEX, IECEx, CSA, GOST	50	3/4" NPT	33.0	36.3	15.0	12.0	0.107
2881420000	ACDP1BE/NP/M20	M20 NP Brass Breather Drain IP66 c/w castellated locknut Ex e, ATEX, IECEx, CSA, GOST	100	M20 x1.5	27.0	29.7	10.0	12.0	0.065
2881430000	ACDP1BE/NP/M25	M25 NP Brass Breather Drain IP66 c/w castellated locknut Ex e, ATEX, IECEx, CSA, GOST	25	M25 x 1.5	31.8	34.9	10.0	12.0	0.097

Note: * A/F = distance across face of locknut; A/C = across corners of locknut



Fig. 9 Pg. 11

Adaptors - Dome Head Nickel Plated Brass IP66, IP68; ATEX; IECEx; cCSAul; Class 1 Div 1 A,B,C,D; Class II Div 1 E,F,G; Class III; Zone 1, Zone 2, 20,21, 22; AEx db, AEx eb, AEx ta; Ex db, Ex eb, Ex nR, Ex ta

Order Number	Model	Description	Box Qty	Thread Size	Nominal	Nominal	Protrusion	Weight
					A/F * (mm)	A/C * (mm)		
2881300000	AR1BF/NP/M20/050NPT	M20 male x 1/2" NPT female	100	M20 male x 1/2" NPT female	27.0	29.7	26.0	0.095
2881310000	AR1BF/NP/M25/075NPT	M25 male x 3/4" NPT female	90	M25 male x 3/4" NPT female	31.8	35.0	26.0	0.130
2881320000	AR1BF/NP/050NPT/M16	1/2" NPT male x M16 female	100	1/2" NPT male x M16 female	23.4	25.7	12.0	0.050
2881330000	AR1BF/NP/050NPT/M20	1/2" NPT male x M20 female	150	1/2" NPT male x M20 female	23.4	25.7	22.5	0.060
2881340000	AR1BF/NP/075NPT/M20	3/4" NPT male x M20 female	100	3/4" NPT male x M20 female	27.9	30.7	10.0	0.060
2881350000	AR1BF/NP/075NPT/M25	3/4" NPT male x M25 female	25	3/4" NPT male x M25 female	30.0	33.0	22.5	0.105

Note: * A/F = distance across face of locknut; A/C = across corners of locknut



Fig. 9 Pg. 11

Dome Head Nickel Plated Brass Stopping Plug (NPT) ATEX, IECEx, CSA, Nema 4X, IP66, IP68; Class 1 Div 1 A,B,C,D; Class II Div1; Class III; Class 1 Zone 1; AEx db, AEx eb, AEx ta; Ex db, Ex eb, Ex nR, Ex ta

Order Number	Model	Description	Box Qty	ISO	Hex	Overall	Weight
				Thread Size	Socket A/F	Length	kgs
2881270000	SPMH1BF/NP/050NPT	1/2" NPT Stopping Plug Dome Head Nickel Plated Brass	135	1/2"	8.0	21.5	0.032
2881280000	SPMH1BF/NP/075NPT	3/4" NPT Stopping Plug Dome Head Nickel Plated Brass	66	3/4"	10.0	21.5	0.049
2881290000	SPMH1BF/NP/100NPT	1" NPT Stopping Plug Dome Head Nickel Plated Brass	50	1"	12.0	21.5	0.078

Nylon Dome Head Stopping Plug ATEX. IECEx, IP66, IP68; Ex eb, Ex ta



Fig. 9 Pg. 11

Order Number	Model	Description	Box Qty	ISO	Hex	Thread	Overall	Weight
				Thread Size	Socket A/F	Length	Length	kgs
2881070000	SPMH1NE/050NPT	1/2" Nylon Hole Plug (Dome Head) ATEX. IECEx, EAC Ex e	135	1/2"	10.0	15.0	21.0	0.01
2881080000	SPMH1NE/075NPT	3/4" Nylon Hole Plug (Dome Head) ATEX. IECEx, EAC Ex e	66	3/4"	12.0	15.0	21.0	0.015
2881090000	SPMH1NE/100NPT	1" Nylon Hole Plug (Dome Head) ATEX. IECEx, EAC Ex e	50	1"	14.0	15.0	21.0	0.022
2881100000	SPMH1NE/M16	M16 Nylon Hole Plug (Dome Head) ATEX. IECEx, EAC Ex e	135	M16	8.0	15.0	21.0	0.005
2881110000	SPMH1NE/M20	M20 Nylon Hole Plug (Dome Head) ATEX. IECEx, EAC Ex e	135	M20	10.0	15.0	21.0	0.007
2881120000	SPMH1NE/M25	M25 Nylon Hole Plug (Dome Head) ATEX. IECEx, EAC Ex e	135	M25	12.0	15.0	21.0	0.011
2881130000	SPMH1NE/M32	M32 Nylon Hole Plug (Dome Head) ATEX. IECEx, EAC Ex e	66	M32	12.0	15.0	21.0	0.019
2881140000	SPMH1NE/M40	M40 Nylon Hole Plug (Dome Head) ATEX. IECEx, EAC Ex e	45	M40	14.0	15.0	21.0	0.028

Nickel Plated Brass Stopping Plug Type A (externally recessed) ATEX, IECEx, CSA, Nema 4X, IP66, Class 1 Div 1 A,B,C,D; Class II Div 1; Class III; Zone 1, AEx db, AEx eb, AEx ta; Ex db, Ex eb, Ex ta



Fig. 9 Pg. 11

Order Number	Model	Description	Box Qty	ISO	Hex	Thread	Overall	Weight
				Thread Size	Socket A/F	Length	Length	kgs
2881020000	SPA0BD/NP/050NPT	1/2" Stopping Plug Type A (externally recessed) NP Brass ATEX, IECEx, CSA, Ex d	135	1/2"	6.0	11.2	11.2	0.009
2881030000	SPA0BD/NP/075NPT	3/4" Stopping Plug Type A (externally recessed) NP Brass ATEX, IECEx, CSA, Ex d	66	3/4"	8.0	11.3	11.3	0.03
2881040000	SPA0BD/NP/100NPT	1" Stopping Plug Type A (externally recessed) NP Brass ATEX, IECEx, CSA, Ex d	66	1"	10.0	14.5	14.5	0.03
2881050000	SPA0BD/NP/150NPT	1-1/2" Stopping Plug Type A (externally recessed) NP Brass ATEX, IECEx, CSA, Ex d	56	1 1/2"	12.0	14.8	14.8	0.05
2881060000	SPA0BD/NP/200NPT	2" Stopping Plug Type A (externally recessed) NP Brass ATEX, IECEx, CSA, Ex d	20	2"	12.0	18.5	18.5	0.11
1477650000	SPA0BD/NP/M16	M16 Stopping Plug Type A (externally recessed) NP Brass ATEX, IECEx, CSA, Ex d	135	M16	8.0	17.0	17.0	0.03
1477670000	SPA0BD/NP/M20	M20 Stopping Plug Type A (externally recessed) NP Brass ATEX, IECEx, CSA, Ex d	135	M20	10.0	17.0	17.0	0.03
1477680000	SPA0BD/NP/M25	M25 Stopping Plug Type A (externally recessed) NP Brass ATEX, IECEx, CSA, Ex d	135	M25	12.0	17.0	17.0	0.05
1477690000	SPA0BD/NP/M32	M32 Stopping Plug Type A (externally recessed) NP Brass ATEX, IECEx, CSA, Ex d	66	M32	12.0	17.0	17.0	0.11
1477700000	SPA0BD/NP/M40	M40 Stopping Plug Type A (externally recessed) NP Brass ATEX, IECEx, CSA, Ex d	60	M40	14.0	17.0	17.0	0.18

PVC Shroud for Un-Armored Type Glands - Black



Fig. 12 Pg. 11

Order Number	Model	Description	Box Qty	Thread Size	Gland	Material
					Type	
1736570000	ACSPVC/L24	M16 PVC Shroud Black for Un-Armored type glands	50	M16	Un-Armored	PVC
1736580000	ACSPVC/L30	M20 PVC Shroud Black for Un-Armored type glands	50	M20	Un-Armored	PVC
1736590000	ACSPVC/L38	M25 PVC Shroud Black for Un-Armored type glands	50	M25	Un-Armored	PVC
1736600000	ACSPVC/L46	M32 PVC Shroud Black for Un-Armored type glands	20	M32	Un-Armored	PVC
1736610000	ACSPVC/L55	M40 PVC Shroud Black for Un-Armored type glands	10	M40	Un-Armored	PVC

Nickel Plated Brass Locknut



Fig. 8 Pg. 11

Order Number	Model	Description	Box Qty	Thread Size	Nominal			Weight
					Thickness	A/F* (mm)	A/C* (mm)	
2881220000	ACBLN/NP/M16	M16 Locknut Nickel Plated Brass	300	M16 x 1.5	4.0	22.0	24.2	0.772
2881230000	ACBLN/NP/M20	M20 Locknut Nickel Plated Brass	300	M20 x 1.5	4.0	24.0	26.4	0.683
2881240000	ACBLN/NP/M25	M25 Locknut Nickel Plated Brass	250	M25 x 1.5	4.0	30.0	33.0	1.027
2881250000	ACBLN/NP/M32	M32 Locknut Nickel Plated Brass	150	M32 x 1.5	4.0	40.0	44.0	2.02
2881260000	ACBLN/NP/M40	M40 Locknut Nickel Plated Brass	100	M40 x 1.5	4.8	46.0	50.5	2.2

Note: * A/F – distance across face of locknut; A/C – across corners of locknut

Nylon IP Sealing Washer



Fig. 13 Pg. 11

Order Number	Model	Description	Box Qty	Metric	Nominal			Weight
					Thread Diameter	Thickness	OD	
1076630000	ACNSW/M16	Sealing Washer M16 Nylon	300	M16	2.0	25.0	0.116	
930730002	ACNSW/M20	Sealing Washer M20 Nylon	300	M20	2.0	29.4	0.164	
1076640000	ACNSW/M25	Sealing Washer M25 Nylon	250	M25	2.0	38.1	0.257	
1076650000	ACNSW/M32	Sealing Washer M32 Nylon	150	M32	2.0	42.5	0.341	
899780000	ACNSW/M40	Sealing Washer M40 Nylon	100	M40	2.0	52.0	0.386	

Serrated Washers Stainless Steel



Fig. 11 Pg. 11

Order Number	Model	Description	Box Qty	Thread Size	Nominal			Weight
					Thickness	OD	kgs / 100	
2880920000	ACSSW/050NPT	1/2" Stainless Steel Serrated Washer	250	1/2"	1.5	35.5	0.137	
2880930000	ACSSW/075NPT	3/4" Stainless Steel Serrated Washer	200	3/4"	1.5	43.5	0.262	
2880940000	ACSSW/100NPT	1" Stainless Steel Serrated Washer	150	1"	1.5	52.0	0.56	
2880950000	ACSSW/125NPT	1-1/2" Stainless Steel Serrated Washer	100	1 1/2"	1.5	59.5	0.675	
2880960000	ACSSW/200NPT	2" Stainless Steel Serrated Washer	50	2"	1.5	71.0	1.042	
2880970000	ACSSW/M16	M16 Stainless Steel Serrated Washer	300	M16	1.0	20.3	1.73	
2880980000	ACSSW/M20	M20 Stainless Steel Serrated Washer	300	M20	1.2	25.5	2.154	
2880990000	ACSSW/M25	M25 Stainless Steel Serrated Washer	250	M25	1.4	32.5	3.259	
2881000000	ACSSW/M32	M32 Stainless Steel Serrated Washer	150	M32	1.5	37.5	4.189	
2881010000	ACSSW/M40	M40 Stainless Steel Serrated Washer	100	M40	1.5	48.0	6.88	

Earth Tag Nickel Plated Brass



Fig. 7 Pg. 11

Order Number	Model	Description	Box Qty	Thread Size	Nominal			Weight
					Thickness	Center	Hole Diameter	
2880820000	ACBET/NP/050NPT	1/2" NPT Ground Earth Tag Nickel Plated Brass	250	1/2"	1.5	33.0	6.9	0.836
2880830000	ACBET/NP/075NPT	3/4" NPT Ground Earth Tag Nickel Plated Brass	200	3/4"	1.5	36.5	6.9	0.746
2880840000	ACBET/NP/100NPT	1" NPT Ground Earth Tag Nickel Plated Brass	150	1"	1.5	42.5	11.8	0.672
2880850000	ACBET/NP/150NPT	1-1/2" NPT Ground Earth Tag Nickel Plated Brass	100	1 1/2"	1.5	45.4	13.5	0.797
2880860000	ACBET/NP/200NPT	2" NPT Ground Earth Tag Nickel Plated Brass	100	2"	1.5	58.1	13.5	1.476
2880870000	ACBET/NP/M16	M16 Ground Earth Tag Nickel Plated Brass	300	M16	1.5	66.8	13.5	2.089
2880880000	ACBET/NP/M20	M20 Ground Earth Tag Nickel Plated Brass	300	M20	1.5	31.8	13.5	0.746
2880890000	ACBET/NP/M25	M25 Ground Earth Tag Nickel Plated Brass	250	M25	1.5	33.0	13.5	0.672
2880900000	ACBET/NP/M32	M32 Ground Earth Tag Nickel Plated Brass	150	M32	1.5	36.5	13.5	0.797
2880910000	ACBET/NP/M40	M40 Ground Earth Tag Nickel Plated Brass	100	M40	1.5	42.5	13.5	1.476



Assembly Services – Expertise for Your Requirements

Hazardous & Intrinsically Safe Applications with Class 1 Div 2, Zone 1, Zone 2, 21 & 22 Certifications

Internationally approved certifications



Class 1 Div 2, Zone 1, Zone 2, 21, 22, UL, cULus Listed, ATEX, IEC Ex – HazLoc Certified

Assembly Services offers a wide range of HazLoc solutions for applications in explosive environments across industrial sectors. Over the years, Weidmüller has successfully established the Klippon® brand in the process industry for high-quality solutions in connection technology, communication and digitization, as well as for components for hazardous areas and engineering services.

Shop Approvals

- UL 508A – Listed Industrial Control Panels - E493842, cULus
- UL 60079-7 - Class 1, Zone 1, 2 AEx Listed Enclosures - E223792
- UL 12.12.01 – Class 1, Division 2 Listed Enclosures – non-incentive - E503056
- UL 698A – Listed Industrial Control Panels Related to Hazardous Areas - E503055
- IECEx 60079-0, -7 - ATEX Class 1 Zone 1 & 2 Certified Enclosures
- IECEx 60079-0, -7 – IECEx Class 1 Zone 1 & 2 Certified Enclosures
- UL 508 – Programmable Controllers – E141197



Define requirements for Hazardous Location enclosures – “Engineered to Order”

At Weidmüller, we have the resources and capabilities to design and build both industrial and Class 1 Div 2, Zone 1, 2, 21, 22 HazLoc certified enclosures including intrinsic safety applications.

Assembled Terminal Rails & Populated Enclosures

We handle every aspect of the assembly process:

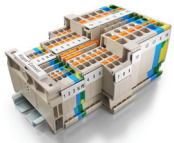
- Initial design specifications
- Assembly and installation of components
- Certification documentation
- Adding mounting plates, holes or knockouts for cable glands
- Class 1 Div 2 Zone 1, Zone 2, 21, 22 suitability
- UL, cULus, IECEx, ATEX certification

Our populated enclosure modification capabilities:

- Adapters
- Heavy Duty Connectors
- Professional tools
- Cable glands, gland plates and breather drains
- Mounting plates / Terminal rails
- Compensating elements
- EMC optimization
- Myers hubs
- Sun and rain roofs
- Labels / warning signs
- Blanking plugs
- Cabtite cable entry system
- Enclosures with viewing windows on request
- Assembled terminal rails certified to industrial and hazardous standards



Get Your Assembly Faster with Flexibility and Efficiency



Assembled Terminal Rails

Ready-to-install assembled rail assemblies including electronic components - individually manufactured according to your specifications.



Modified Enclosures

Individual empty enclosures with holes, threads or cut-outs according to your specifications - optionally unassembled, equipped or with add-on parts.



- SS Enclosures
- Cabtite Front Tight Cable Entry Ssystem



Populated Enclosures

Assembled enclosures with rail assembly, add-on components and optional Ex approval.



Weidmüller Configurator

Our simple and seamless planning tool for electrical designers for fast track planning with AutoCAD, EPLAN or Zuken



Easy digital engineering

Engineering processes have to be completed with ever greater speed, precision, and efficiency. Today's market expects simple and easy to understand configuration and ordering workflows. This requires intelligent tools that provide optimum support for complex planning processes.

Simple planning through software support

The Weidmüller Configurator is a software solution for selecting, configuring, and ordering terminal rails and terminal rail components from the Weidmüller range as well as modified and assembled enclosures.

The tool supports continuous engineering workflows, from planning with AutoCAD, ePlan, e3, Zuken or E-CAD systems through to documentation. Create your configuration from over 12,000 digital Weidmüller products with extensive support in all stages of your configuration process.



For more information: www.weidmuller.com/wmc

Fast Delivery Service

Get your quote in minutes and select rail assemblies in 10 days

Today's challenges in plant design and control cabinet production

- Individualized designs
- Tight deadlines
- More complexity
- Price pressures
- Low volumes
- Design changes
- Supply chain challenges
- Hiring challenges

The Fast Delivery Service (FDS) simplifies your planning, accelerates your production processes and guarantees the delivery of individually assembled and ready-to-install terminal rails, and populated enclosures. Reduce your costs, increase your flexibility and stay one step ahead of your competitors.

Delivery Disclaimer: In the USA, 10 Day Fast Delivery Service applies to Rail Assemblies Only. Rail Assembly must include FDS program-specific components.

10 Day Delivery guaranteed for the first 25 assemblies; delivery time for higher quantities dependent upon component availability.

For more information: www.weidmuller.com/fds



Weidmüller – Your Partner in Industrial Connectivity

As experienced experts, we support our customers and partners around the world with products, solutions and services in the industrial environment of power, signals and data. We are at home in their industries and markets and understand the technological challenges of tomorrow. We are therefore continuously developing innovative, sustainable and useful solutions for their individual needs. Together, we set standards in Industrial Connectivity.

Weidmüller, Inc
821 Southlake Blvd.
Richmond, Virginia 23236
Telephone: (800) 849-9343
Facsimile: (804) 379-2593
Email: customerservice@weidmuller.com
Website: www.weidmuller.com

For support, contact us:
www.weidmuller.com/contact

Weidmüller 