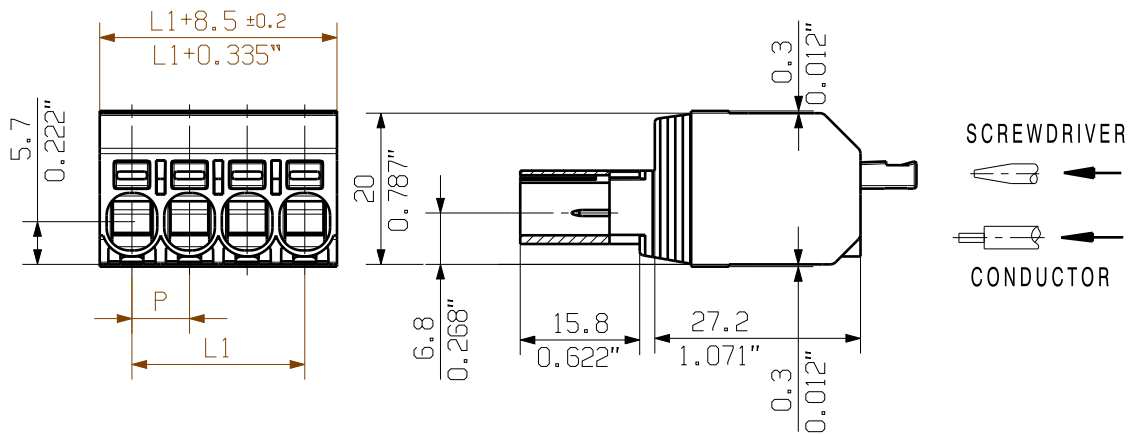
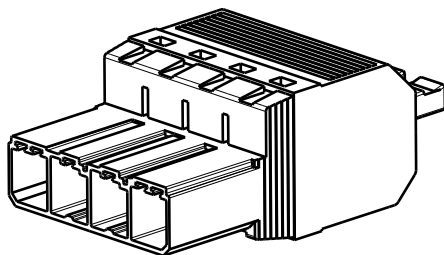


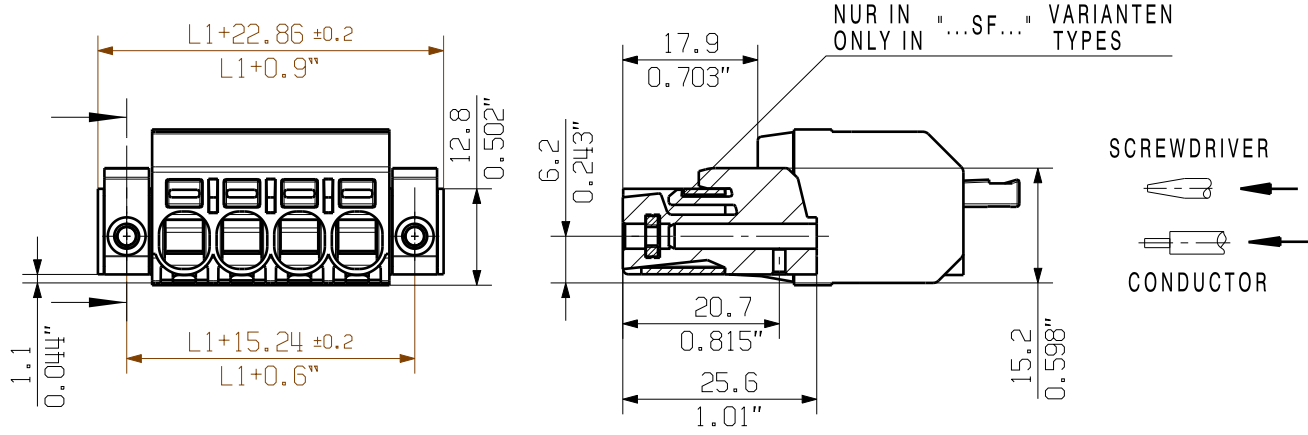
SHOWN: SVFL 7.62HP/04/180



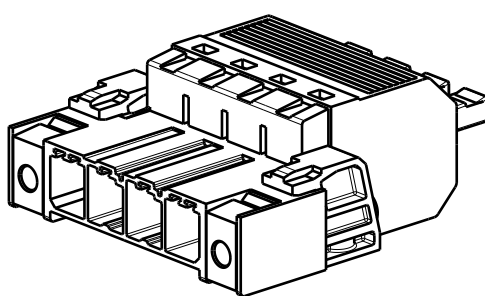
M 1/1



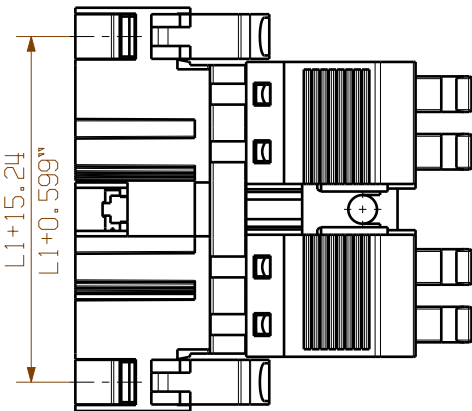
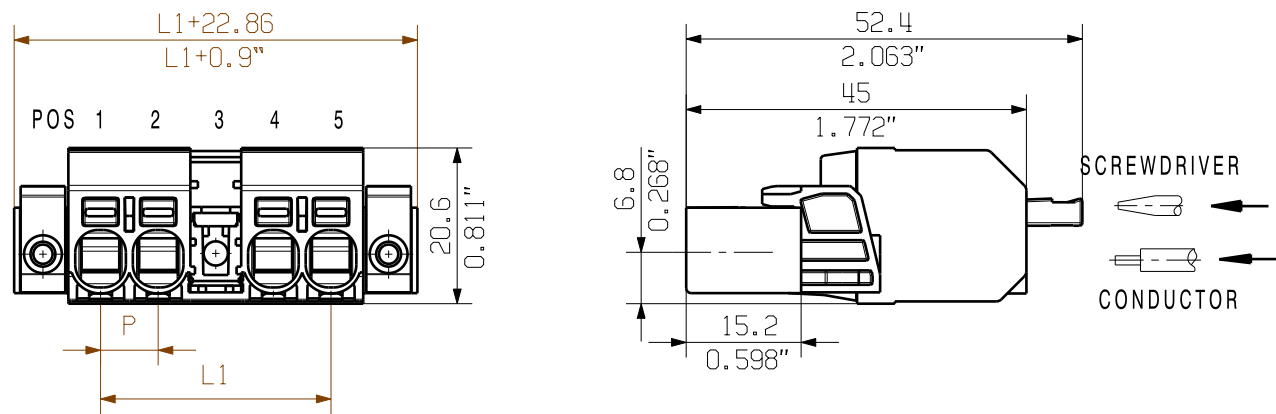
SHOWN: SVFL 7.62HP/04/180SF



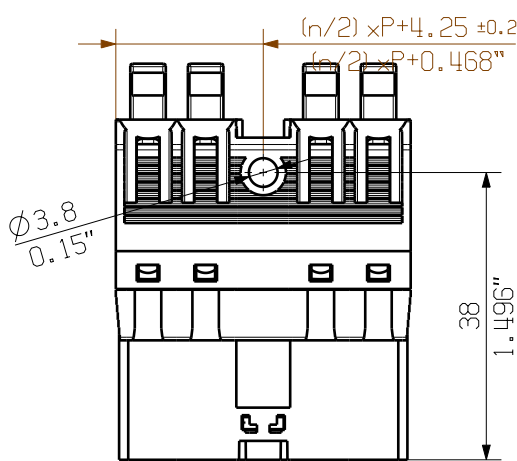
M 1/1



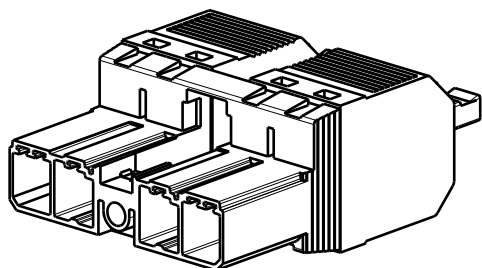
SHOWN: SVFL 7.62HP/04/180SFMF3



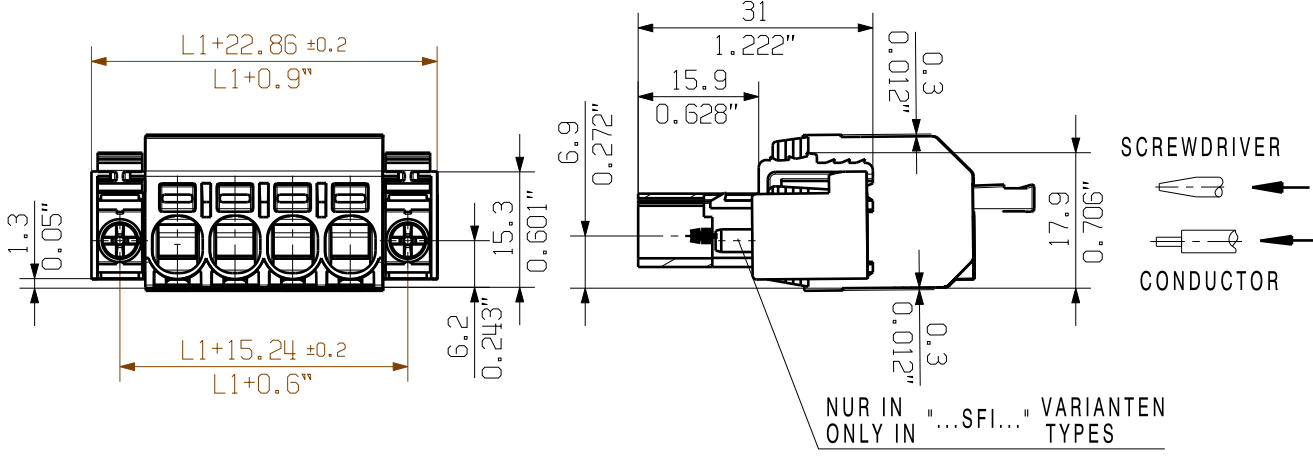
SHOWN: SVFL 7.62HP/04/180MSF



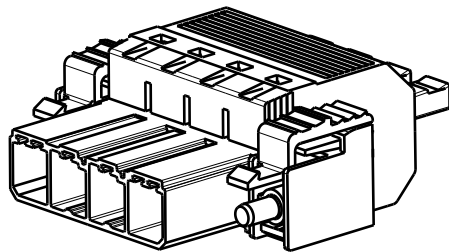
M 1/1



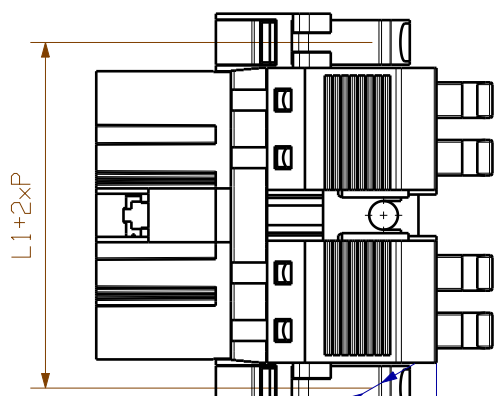
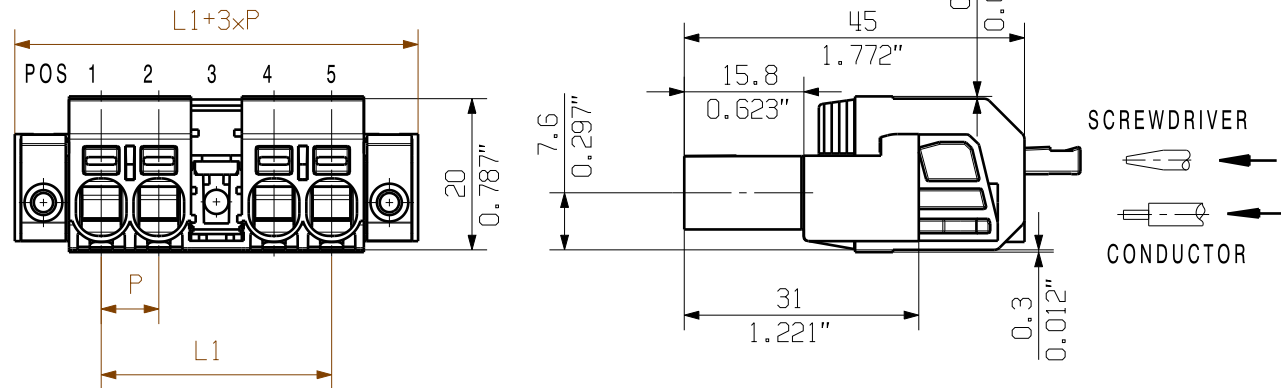
SHOWN: SVFL 7.62HP/04/180SFI



M 1/1



SHOWN: SVFL 7.62HP/04/180SFBMF3



P=RASTER/PITCH
n=POLZAHL/NO. OF POLES
MF=MITTELFANSCH/MIDDLE FLANGE

6 MF 4	POL	POL	POL	MF	POL	POL	POL
5 MF 4	POL	POL	POL	MF	POL	POL	
5 MF 3	POL	POL	MF	POL	POL	POL	
4 MF 4	POL	POL	POL	MF	POL		
4 MF 3	POL	POL	MF	POL	POL		
3 MF 3	POL	POL	MF	POL			
3 MF 2	POL	MF	POL	POL			
2 MF 2	POL	MF	POL				
POLE	1	2	3	4	5	6	7
n	POS.						

GENERAL TOLERANCE:
DIN ISO 2768-m

First Issue Date
28.08.2018

Modification

Date
23.10.2018

Name
Administrator

Responsible
Krug, Matthias

Scale: 2/1 Size: A2

Drawings Assembly

Prim PLM Part No.:015882

Prim ERP Part No.:1547550000

Weidmüller

Drawing no. 60584

Sheet 01 of 01 sheets

SVFL 7.62HP/180

STIFTSTECKER

MALE PLUG

Product file: 7390 BVF/SVF 7.62HP

ORDER NUMBERS
SEE DRAWING 46101 SHEET 01

6	38,10	1,5
5	30,48	1,2
4	22,86	0,9
3	15,24	0,6
2	7,62	0,3
n	L1 (mm)	L1 (Inch)

not released