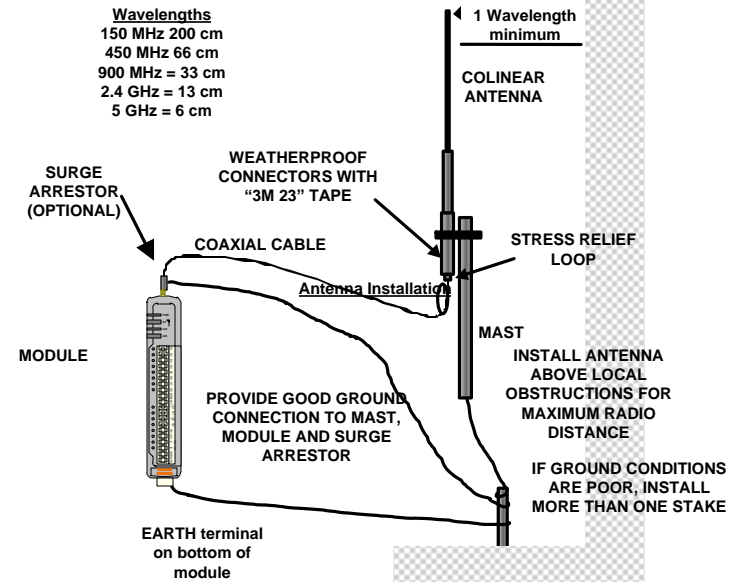
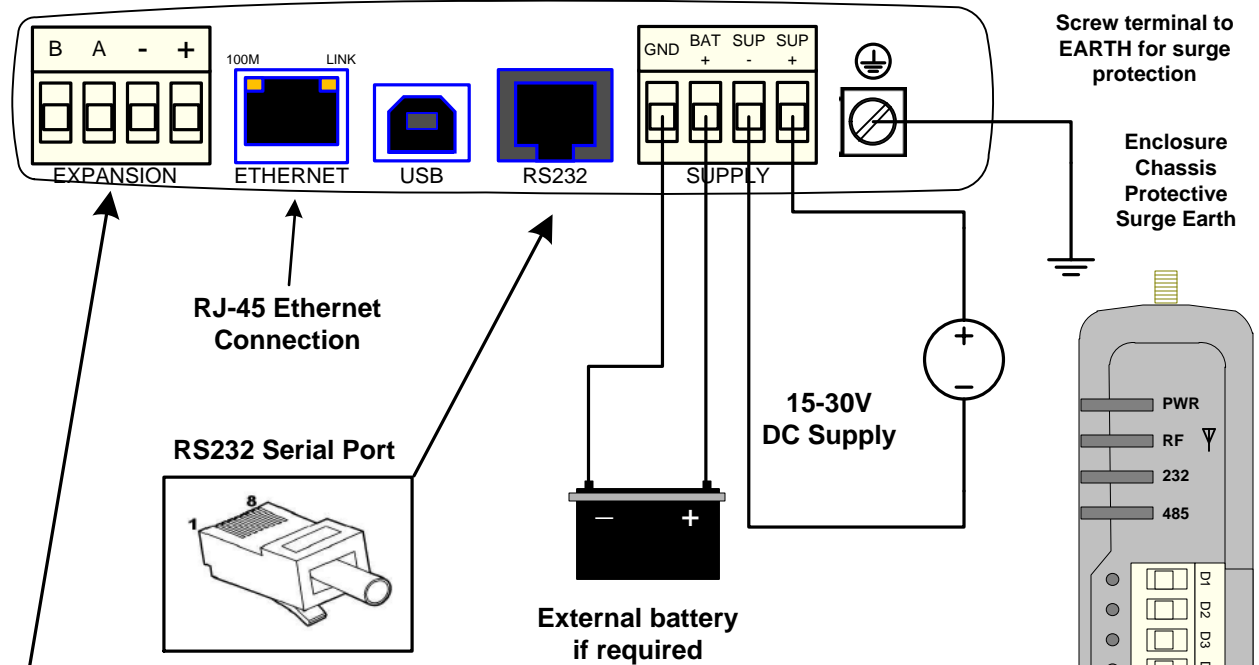


FCC Notice

This device complies with Part 15.247 of the FCC Rules. Operation is subject to the following two conditions:
 1) This device may not cause harmful interference and
 2) This device must accept any interference received, including interference that may cause undesired operation



WARNING - EXPLOSION HAZARD

DO NOT DISCONNECT CIRCUITS WHILE LIVE, UNLESS AREA IS KNOWN TO BE NON-HAZARDOUS

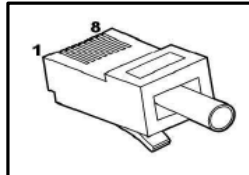
NOTES

- WI-I/O 9-U2 MODULES ARE SHIPPED FROM THE FACTORY AS MESHING RADIOS, FOR WIBNET COMPATIBILITY MODE IT WILL NEED TO BE ENABLED IN CONFIGURATION.
- All connections must be SELV (Safety Extra Low Voltage <50V AC & <120V DC)
- Ethernet Port wiring is that of a hub or switch.
- EARTH terminal on end plate of module for surge protection.
- DIO channels can be wired as either inputs or outputs.

NOTE: "GND" and "SUP -" terminals are connected internally to the EARTH terminal

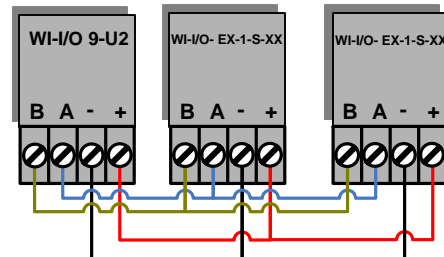
RJ-45 Ethernet Connection

RS232 Serial Port



RJ-45	Signal name	Abbrev	DB9
3	Data Terminal Ready	DTR	4
4	Signal Common	GND	5
5	Receive Data	RXD	2
6	Transmit Data	TXD	3

Expansion I/O Power and RS485 serial connection

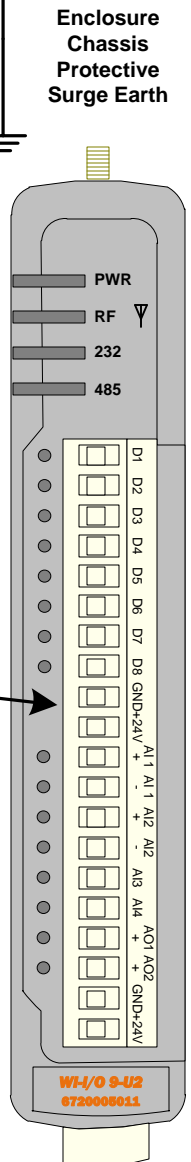


External battery if required

For I/O Connections see Sheet 2

Side Access Panel Dip Switches

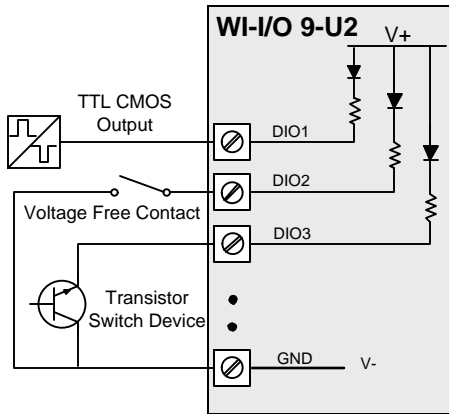
DIP	Description
1	AI3 Current/Voltage
2	AI3 Current/Voltage
3	AI4 Current/Voltage
4	AI4 Current/Voltage
5	Unused
6	Default Config Enable



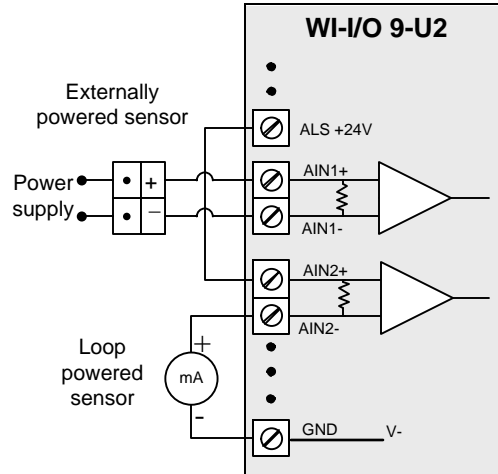
FCC Statutory Requirement

Unlicensed operation limits the radio power. High gain aerials may only be used to compensate for cable losses.

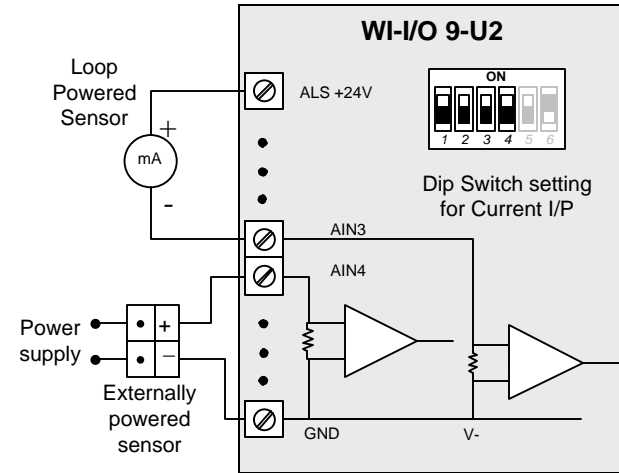
Digital Input



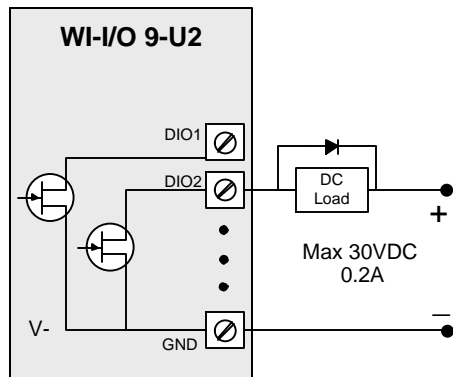
Differential Current Inputs (AI1&2)



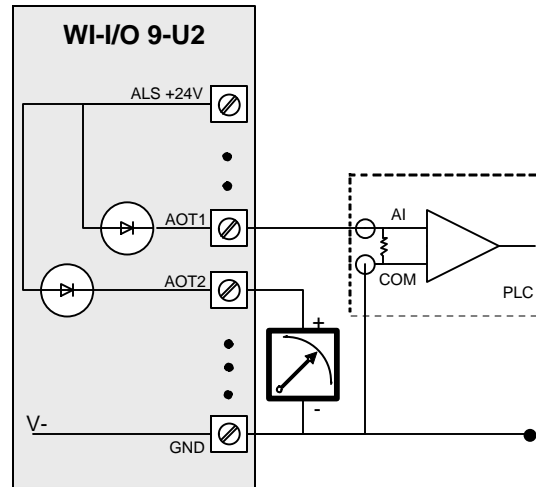
Single Ended Current Input (AI3&4)



Digital Output



Analog Output



Single Ended Voltage Input

