

## Technical change of the screwable cross connections of the WDU 50N and WDU 70N

Dear Ladies and Gentlemen



the below listed articles will be supplied in a modified revision. Please pass this product information on to your employees and, if needed, to your customers. All modifications are performed for reasons of product improvements.

### 1. Initial situation

The screwable cross connections of the WDU 50N and WDU 70N consist of a cross-connection link, spacers and a screw with a washer. The cross-connection link and the spacers are currently made of solid copper, which results in a high use of materials and high manufacturing costs. This results in sharply increasing costs.

### 2. Technical change

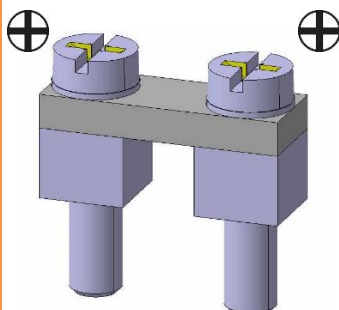
The application of the cross connection is not changed. However, the design of the cross connection has changed, and we have switched to in-house production at WM, which also makes procurement easier and increases availability.

For better usability, we have adapted the drive of the screws of the cross connection to the drive of the clamping screws of the corresponding terminal blocks - hexagon socket . The corresponding "IR" variants of the terminal blocks retain the drive of the hexalobular socket clamping screws - suitable for Torx®. .

At the same time, the slot in the removable partitions in the cross-connection channel of the WDU 50N, WDU 70N and WDU 95N/120N terminal blocks was closed, as shown below.

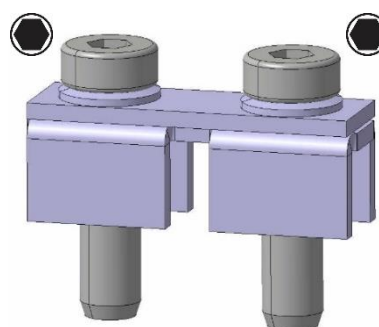
#### Old Version

##### WQV 50N

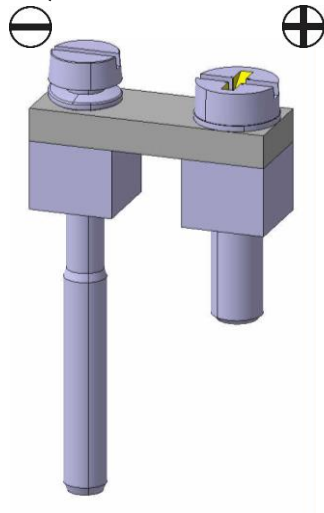


#### New Version

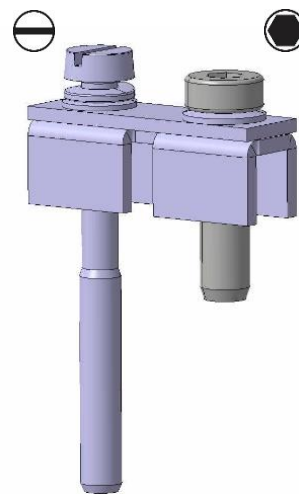
##### WQV 50N



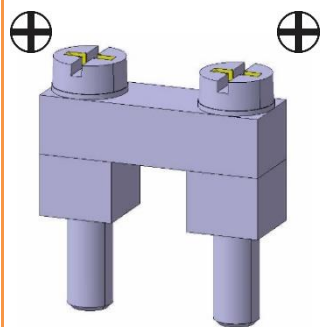
WQV 50N PEN



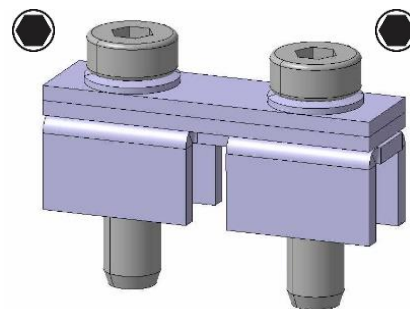
WQV 50N PEN



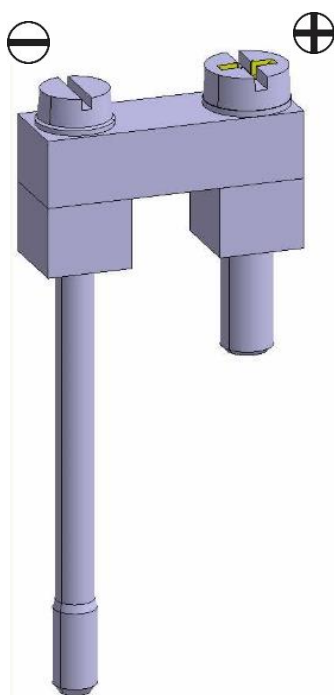
WQV 70N



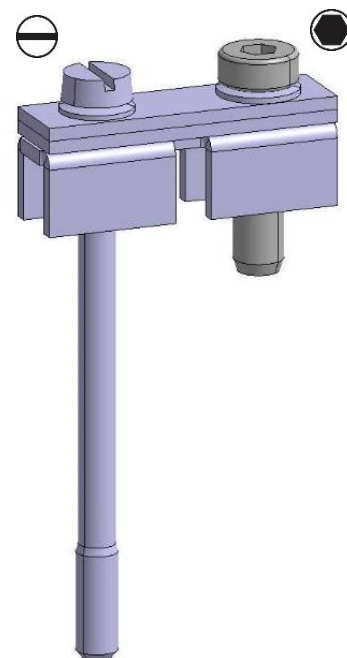
WQV 70N

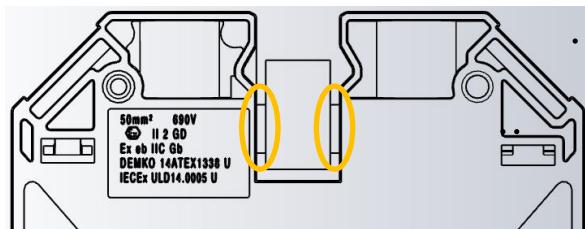


WQV 70N PEN

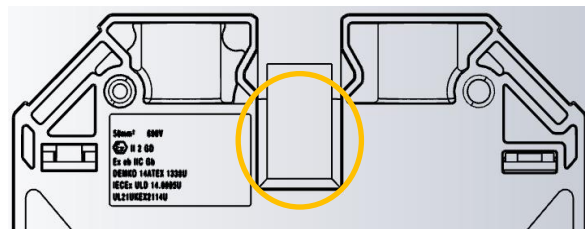


WQV 70N PEN



**Sideview WDU 50N / WDU 70N / WDU 95N/120N**

sided connection of the partition part



3-sided connection of the partition part

**3. Reason for change**

The reasons for the technical change to the cross connections are:

- Improved added value
- Improved availability by switching to in-house production.
- The foreseeable cost increases can be cushioned and sales prices can be kept at the same level.

The reason for changing the partition walls in the QV channel:


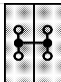
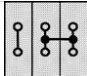
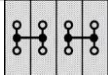
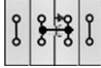
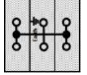
- In order to be able to maintain the working voltages even in applications with cross connections, the partitions of the WDU 50N and WDU 70N must be completely closed,
- For the sake of uniformity, the partition walls in the area of the cross-connecting channel were also closed on the WDU 95N/120N.

Important note:

The new versions of the cross connections may only be used with the new versions of the WDU 50N and WDU 70N!

- The detailed information regarding the cross connections can be found under "6. Cross-connection options".

## 4. Cross-connection possibilities

Rated voltage to IEC 60947-7-1		Old molding combined with new WQV	New molding combined with new WQV
		 	 
Single		690 V	1000 V
Adjacent - Next to the same terminal		690 V	1000 V
Adjacent - Next to a PE terminal		500 V	1000 V
Adjacent - Next to an endbracket		690 V	1000 V
Close-by		250 V	1000 V
Single overlap		690 V	690 V
PEN-Connection		690 V	1000 V
Close to a PEN-Connection		250 V	800 V
Bridging a PE terminal		not released application	not released application

## 5. Availability

The cross-connections and the terminal blocks are now delivered in the modified version.

**6. Affected articles**Terminal blocks WDU 50N

WDU 50N	1820840000
WDU 50N BL	1820850000
WDU 50N SW	1298070000
WDU 50N GE/SW	2000080000
WDU 50N IR	1186630000
WDU 50N IR BL	1422440000

Cross-connections WDU 50N

WQV 50N/2	1834060000
WQV 50N/3	1834070000
WQV 50N/4	1834080000
WQV 50N/5	2004960000
WQV 50N/5/3/1	1469080000

Terminal blocks WDU 70N

WDU 70N/35	9512190000
WDU 70N/35 BL	9512420000
WDU 70N/35 GE/SW	2000100000
WDU 70/35 IR	1393420000

Cross-connections WDU 70N

WQV 70N/2	9512240000
WQV 70N/3	9512250000
WQV 70N/4	9531290000
WQV 70N/5/3/1	1393020000

Terminal blocks WDU 95N/120N

WDU 95N/120N	1820550000
WDU 95N/120N BL	1820560000
WDU 95N/120N GE/SW	2000110000

Cross-connections WDU 95N/120N

WQV not affected by the change

We follow the advice of our customers and are constantly working on our products in order to improve them sustainably. We will implement these changes as smoothly as possible and without affecting delivery times and the functionality of the products.

For further questions please contact your sales office directly. All contacts for sales representatives are available here:  
[www.weidmueller.com/contact](http://www.weidmueller.com/contact)

Best regards

Productmanagement Modular Terminal Blocks  
Business Unit Rail Mounted Components

Weidmüller Interface GmbH & Co. KG  
Klingenbergstraße 26, 32758 Detmold

**Weidmüller** – Your partner in Industrial Connectivity  
We look forward to sharing ideas with you – **Let's connect.**