

Migration Solutions

MiBridge – Migration Made Easy

Transition from legacy to new PLC/DCS systems faster



Weidmüller 

Why Migration is Needed

Migration solutions avoid downtime and maintain productivity

Due to continuous technological changes, PLC/DCS systems become obsolete and need to be replaced with new models. Many industries in process and energy, such as pulp & paper, water treatment, oil & gas, power generation and metal manufacturing require PLC / DCS system updates with minimum downtimes.

While rip-and-replace has long been considered for PLC upgrades, when compared to plug-and-play solutions, rip-and-replace is time-consuming, expensive and has high potential for I/O wiring errors.

Now, with Weidmuller's plug and play migration solutions, upgrading to the newest PLC is easier than ever:

- Ability to migrate easily from one brand to another brand
- Cables are prechecked for 100% accuracy
- Utilize existing footprint and avoid cabinet drilling
- Field wiring remains undisturbed, mitigating the need for troubleshooting and minimizing risks

THE LATEST TRENDS AND TECHNOLOGIES IN PLC/DCS MIGRATION

Request your free white paper!

www.weidmuller.com/MiBridge



In our latest whitepaper we give you an overview of the most important theses and state the reasons for the necessity of a PLC/DCS migration. Additionally we show you the cost of a conventional PLC migration and the possibilities for an efficient PLC/DCS migration and how it is done in the most effective way.

PLC/DCS System Cabling & Migration Solutions

Replace your PLC, not your field wiring

Weidmuller is able to support migration in 3 different scenarios.

Scenario 1: PLC/DCS system was installed with PLC interface modules

In this case, only the PLC/DCS cable with the proper connector and the PLC/DCS itself has to be replaced.



Old PLC/DCS system



New PLC/DCS system

Scenario 2: Card solution (rack in place)

This solution works if the new installation has enough space to add the rack of the new PLC/DCS without disassembling the old one. In this case, the adapter card can be placed in the old rack, while the new control system is located in a different cabinet/location. The adapter card is provided with 2 connectors: the first one is used to connect the old PLC/DCS connector to the field wiring and the second one will be connected to a pre-assembled cable which will connect to the new PLC/DCS.



Scenario 3: Bridge solution

The Bridge solution does not require any additional space in the control cabinet. The adapter chassis and bridge take the place of the old controller and combine the connections from the field devices to the new controller into one compact unit. With the new I/O mounted on the bridge, there is no need for additional cabinets and minimized length of cables anymore.



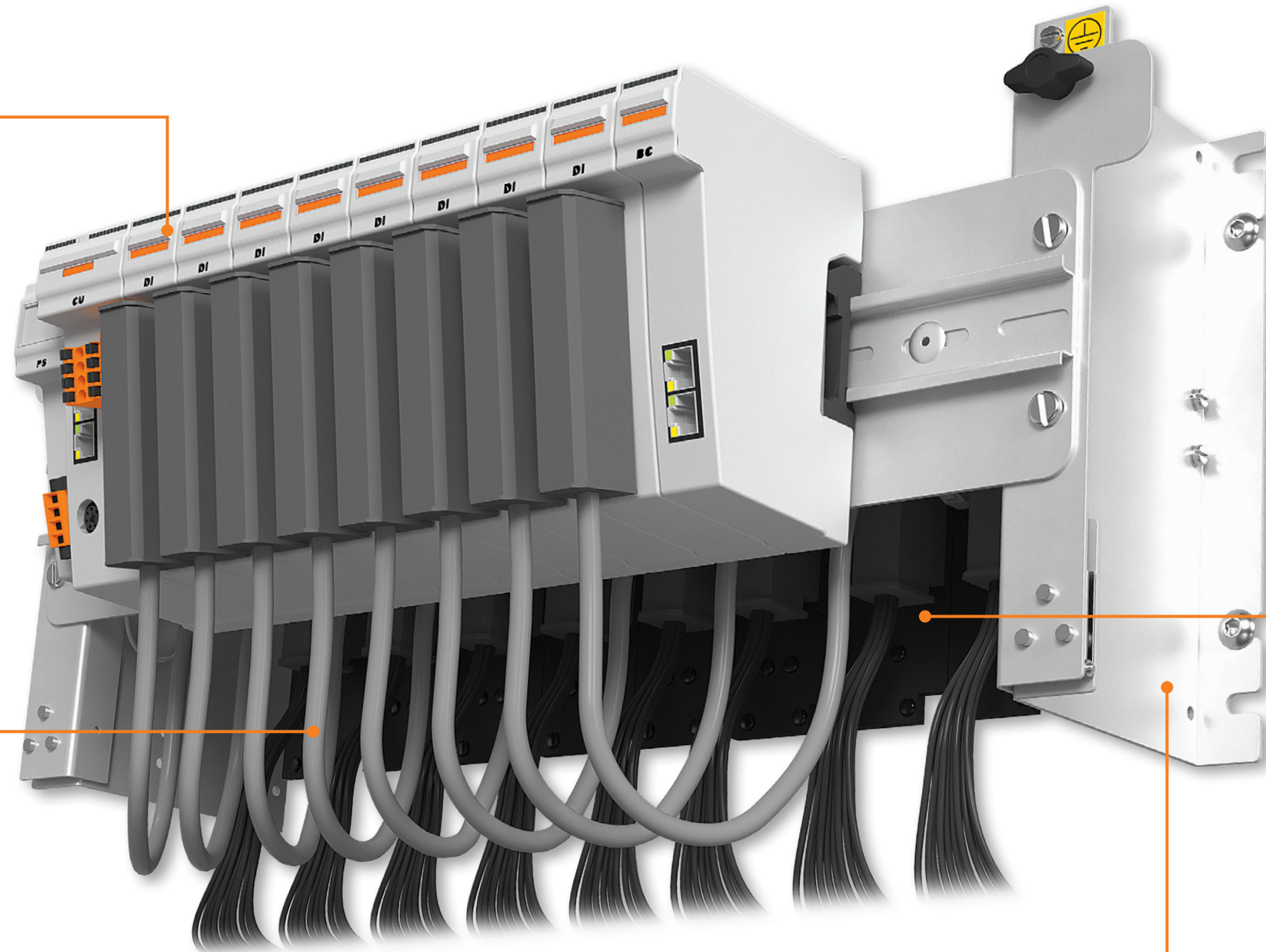
Overview

Space-Saving Bridge System

Convenient PLC/DCS changeover within a few hours

Manufacturer independent

Regardless of the legacy PLC/DCS manufacturer, at Weidmüller you'll find the perfect portfolio of migration solutions to suit your needs.



Pre-assembled cables

Custom cables are built to ensure connection between the MiBridge adapter and the new PLC. Our pre-assembled cables ensure the correct pin-out to provide the connectivity between the adapter and new PLC, while offering longer lengths if necessary.

Old PLC systems

Adapter chassis sits in the same footprint as the former PLC chassis, eliminating the need to drill holes or create space.

Less space required

The rack system replaces the old control system and combines connection levels with the new control to create one compact unit. The ability to easily turn down the upper deck makes the connection components accessible without any difficulty.

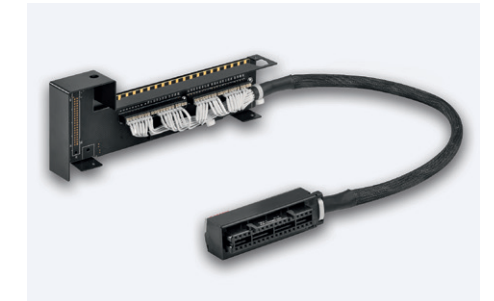


Maximum space savings

With the bridge solution, the existing control rack is replaced, meaning that no extra space is required in the control cabinet. On two levels, the new PLC/DCS is mounted in the same place above the existing controller. Migration is performed via an adapter card and a cable with the new PLC/DCS connector.

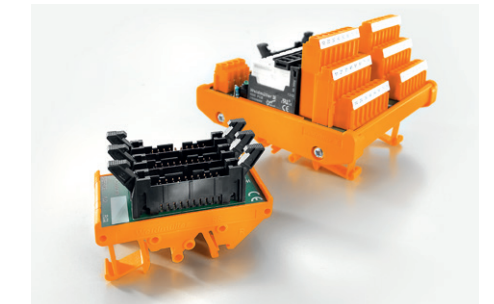
Error-free migration

Easy-to-choose migration components and the possibility of combining tested, pre-assembled cables and front plug-in adapters make for error-free connection of the new PLC/DCS.



Needs-based solution

Our adapters and interfaces are the easiest way of combining old plants with new PLC/DCS systems. There are no limits to the potential uses of our retrofitting components.



Retrofitting Made Easy – The migration process

Step 1

The bridge takes the place of the old control system so that no additional space is required in the panel.



Uniquely designed solution

The key to our migration platform is the design. It permits your existing field wiring to remain in place and undisturbed on the front panel adapter, and eliminates the need to wire-trace or ring-out.



Quick and efficient

Time savings up to 95% thanks to reduced cabling combined with a reduction in the testing and marking workload.

Step 2

Front adapters are added so that the existing field wiring signal can be carried with pre assembled cables to the new PLC/DCS.



Compatibility means flexibility

Weidmuller's migration solution includes several versions of card adapters and cable types enabling you to seamlessly migrate to any control system.



Safe and reliable

Convenient plug-and-play solution without the error sources typically seen in conventional cable processing and point-to-point wiring.

Step 3

Lastly, the rail with the new PLC/DCS is positioned and the pre-assembled cable from the FAD is connected to the appropriate new I/O card.



Minimal components maximize migration efficiency

The assembly is a universal conversion/migration system for main legacy PLC/DCS systems, enabling you to seamlessly migrate to any new control system.



Equipped for the future

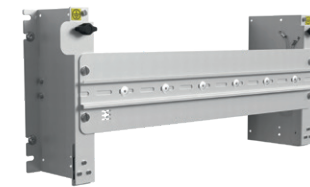
The control system can be updated and retrofitted without having to re-wire the sensors and actuators in the field.

Increase Flexibility, Simplify the Update Process System cabling solutions for machine construction

MiBridge from Weidmuller offers a complete or partial solution for numerous manufacturers of PLC/DCS – fast, easy, efficient. We can extend our current portfolio on demand.

Siemens	Schneider	Rockwell	Honeywell	GE-Fanuc	Emerson	ABB
Solutions for:						
S5-95U	TSX 47	SLC500	IPC 620 / Logic Manager	GE 9030 (Rx3i)	Westinghouse	S800
S5-100	PB400	PLC-5	C200	GE 9070	Provox	Bailey INFI/NET 90 (TA)
S5-115	TSX Premium	Control Logix	C300	Series 6 T (Salem)		Bailey INFI/NET 90 (TU)
S5-135	TSX Momentum	Compact Logix 5069	TDC 3000, PM, HPM, APM (PMI/O)	Series 6 T (C'ville)		
Moore APACS	M580 (BMX)	Compact Logix 1769				
ET200M	M340 (BMX)	Micro Logix 1500 / (1769 I/O)				
	Foxboro IA (100 Series)					
	Foxboro IA (200 Series)					
	Modicon Quantum					
	Modicon 984 (S800)					
	Modicon 584 (B200)					
	SYMAX					
	SCADA Pack					

Find the right accessories, cables and PLC interfaces for your time-saving PLC / DCS System Cabling & Migration Solutions



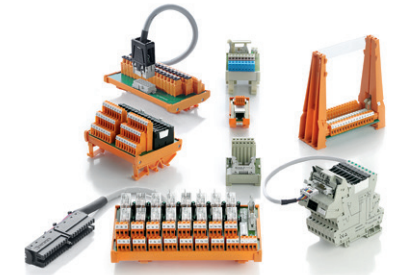
Accessories

The racks have the same dimensions as the original old PLC/DCS. The front adapters (FAD) are installed in the bottom section of the rack while the new PLC/DCS is located in the top section. The racks are fitted with a hinge that provides access to the old cabling.



Custom cable assemblies

Consisting of either standardized or specific connecting lines – we provide you with the optimal solution for every cabling task.



PLC/DCS interfaces and pre-assembled cables

We offer future-proof cabling of your control systems with manufacturer-specific interface solutions.

This Brochure contains trademarks of:

- Siemens, S5-95U, S5-100, S5-115, S5-135, Moore APACS are registered trademarks of Siemens AG
- Schneider, TSX 47, PB400, TSX Premium, TSX Momentum, M580 (BMX), M340 (BMX), Foxboro IA (100/ 200 Series), Modicon Quantum, Modicon 984 (S800), Modicon 584 (B200), SYMAX, SCADA Pack are registered trademarks of Schneider Electric
- Rockwell Automation, SLC500, PLC-5, Control Logix, Compact Logix 5069, Compact Logix 1769, Micro Logix 1500/ (1769 I/O) are registered trademarks of Rockwell Automation, Inc.
- Honeywell, IPC 620/ LogicManager, C200, C300, TDC 3000, PM, HPM, APM, (PMI/O) are registered trademarks of Honeywell International Inc.
- GE-Fanuc, GE 9030 (Rx3i), GE 9070, Series 6 T (Salem), Series 6 T (C'ville) are registered trademarks of GE-Fanuc
- Emerson, Westinghouse, Provox are registered trademarks of Emerson Electric Co.
- ABB, S800, Bailey INFI/NET 90 (TA/TU) are registered trademarks of Asea Brown Boveri Ltd.

Weidmuller – Your Partner in Smart Industrial Connectivity

As experienced experts we support our customers and partners around the world with products, solutions and services in the industrial environment of power, signal and data. We are at home in their industries and markets and know the technological challenges of tomorrow. We are therefore continuously developing innovative, sustainable and useful solutions for their individual needs. Together we set standards in Industrial Connectivity.

Weidmuller, Inc
821 Southlake Blvd.
Richmond, Virginia 23236
Telephone: (800) 849-9343
Email: customerservice@weidmuller.com
Website: www.weidmuller.com

Personal support can
be found on our website:
www.weidmueller.com/contact

Weidmüller 

01/2024 LIT2053