

More freedom – Less effort

RockStar® ModuPlug is setting new standards



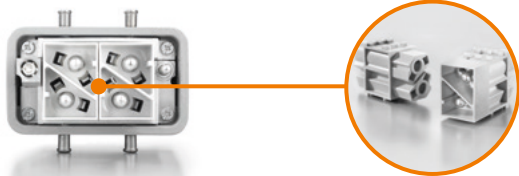
Weidmüller 

Outstanding performance in the smallest of spaces

More & Less: RockStar® ModuPlug

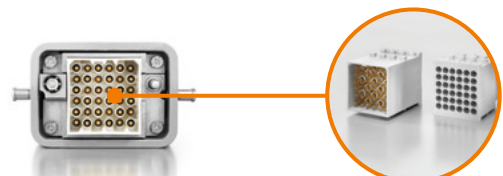
Optimal and future-proof connections are nowhere more valuable than in industry. Whether in machine construction, transportation or the energy sector, the uses of professional plug-in connector systems are endless.

More for less: RockStar® ModuPlug sets new standards. The modular connector system solves space problems by offering increased functionality with a reduced installation space, which in turn also helps keep the weight down. And all this with more convenient installation. Simply more of what you need and less of what you can do without.



More power – Less weight

Reduced weight with the same power thanks to the 100 A module in 1.5 width



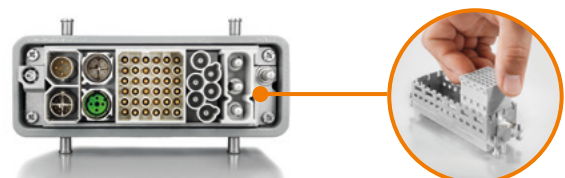
More signals – Less space

HD 36 module with optimal packing density for transmission of more signals



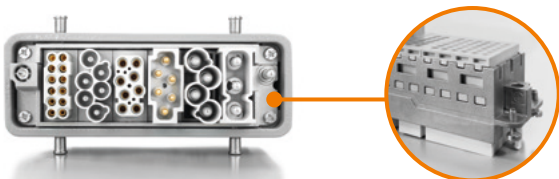
More options – Less costs

4 different module widths for more functionality in the smallest of installation spaces



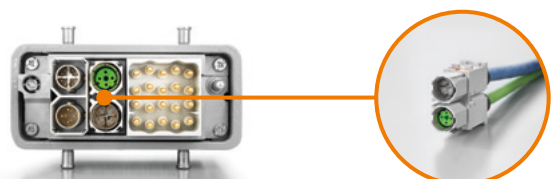
More convenience – Less risk

Fast and simple handling due to the innovative sliding frame and reliable coding



More flexibility – Less dependency

Wide variety and compatibility allow for increased flexibility in planning and installation



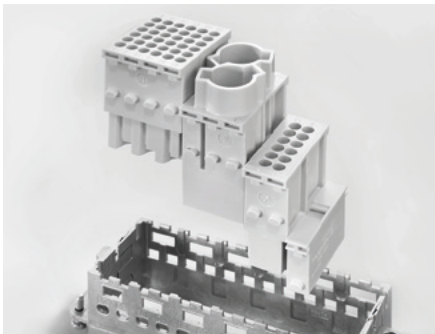
More data – Less limits

Data transmission with up to 2 Cat. 6_A connections each with 10 Gbit



RockStar® ModuPlug has been specially designed with the future in mind. Using the individual modules, you combine all the necessary functions for power, signal and data transmission in a single interface. The modules reduce the amount of space required and cut costs as compared with fixed-pole inserts and other modular plug-in connector systems.

The frames and modules can be installed with extreme ease and integrated into HDC housings with the IP65 and IP68 protection classes. You can even use RockStar® ModuPlug in existing applications without the need to make system adjustments.



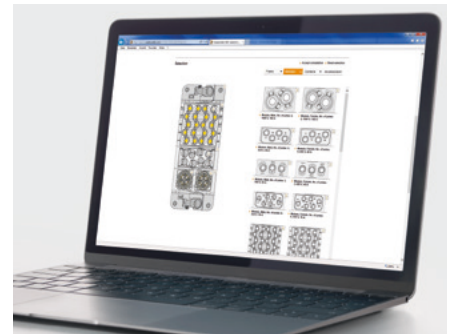
Pitch size halved

The module pitch size in the frame has been halved. This doubles the number of module spaces and increases the functionality in the same space.



Compact module

The compact bus module is designed for megabit and gigabit data connectors. This allows the integration of up to two Cat. 6_A connections, each with 10 GBit in one module.



Simple configuration

Configure frames, modules, contacts and accessories quickly and easily in the RockStar® ModuPlug online configurator.

Cat. 5e Data Inserts

HDC XX5E01 FMSM12D-0100



Module side version: Female
 Opposite side version: Male, straight, M12D
 Cable length: 1 m
 Transmission rate: 100 Mbit/s
 Order No.: 2451120100

HDC XX5E01 FMSRJ45-0100



Module side version: Female
 Opposite side version: Male, straight, RJ45
 Cable length: 1 m
 Transmission rate: 100 Mbit/s
 Order No.: 2451080100

HDC XX5E01 FOXXXXX-0100



Module side version: Female
 Opposite side version: open
 Cable length: 1 m
 Transmission rate: 100 Mbit/s
 Order No.: 2003920100

HDC XX5E01 MMSM12D-0100



Module side version: Male
 Opposite side version: Male, straight, M12D
 Cable length: 1 m
 Transmission rate: 100 Mbit/s
 Order No.: 2451110100

HDC XX5E01 MFSXXXX-0100



Module side version: Male
 Opposite side version: Female, straight
 Cable length: 1 m
 Transmission rate: 100 Mbit/s
 Order No.: 2453550100

HDC XX5E01 MMSRJ45-0100



Module side version: Male
 Opposite side version: Male, straight, RJ45
 Cable length: 1 m
 Transmission rate: 100 Mbit/s
 Order No.: 2450490100

HDC XX5E01 MOXXXXX-0100



Module side version: Male
 Opposite side version: open
 Cable length: 1 m
 Transmission rate: 100 Mbit/s
 Order No.: 2003890100

HDC MBUS4 D5E



Type: Field attachable Cat 5e,
 D-coded
 Rated current: 4 A
 Rated voltage: 50 V
 Order No. (Female): 2427930000
 Order No. (Male): 2427920000

Cat. 6_A Data Inserts

HDC XX6A01 FMSM12X-0100



Module side version: Female
 Opposite side version: Male, straight, M12X
 Cable length: 1 m
 Transmission rate: 10 GBit/s
 Order No.: 2451140100

HDC XX6A01 FMSRJ45-0100



Module side version: Female
 Opposite side version: Male, straight, RJ45
 Cable length: 1 m
 Transmission rate: 10 GBit/s
 Order No.: 2451100100

HDC XX6A01 FOXXXXX-0100



Module side version: Female
 Opposite side version: open
 Cable length: 1 m
 Transmission rate: 10 GBit/s
 Order No.: 2003850100

HDC XX6A01 MMSM12X-0100



Module side version: Male
 Opposite side version: Male, straight, M12X
 Cable length: 1 m
 Transmission rate: 10 GBit/s
 Order No.: 2451130100

HDC XX6A01 MFSXXXX-0100



Module side version: Male
 Opposite side version: Female, straight
 Cable length: 1 m
 Transmission rate: 10 GBit/s
 Order No.: 2453540100

HDC XX6A01 MMSRJ45-0100



Module side version: Male
 Opposite side version: Male, straight, RJ45
 Cable length: 1 m
 Transmission rate: 10 GBit/s
 Order No.: 2451090100

HDC XX6A01 MOXXXXX-0100



Module side version: Male
 Opposite side version: open
 Cable length: 1 m
 Transmission rate: 10 GBit/s
 Order No.: 2003820100

HDC MBUS8 X6A



Type: Field attachable Cat 6_A, X-coded
 Rated current: 0,5 A
 Rated voltage: 50 V
 Order No. (Female): 2427910000
 Order No. (Male): 2427900000

Power

HDC MHP 100 FC/ MC



100A

Rated current: 100 A
 Rated voltage: 1000 V
 Connection Type: Crimp connection
 Order No. (Female): 1429080000
 Order No. (Male): 1429060000
 Required slots: 1.5

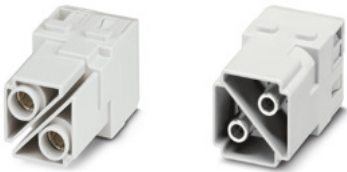
HDC MHP 200 FC/ MC



200A

Rated current: 200 A
 Rated voltage: 1000 V
 Connection Type: Crimp connection
 Order No. (Female): 2549260000
 Order No. (Male): 2548900000
 Required slots: 1.5

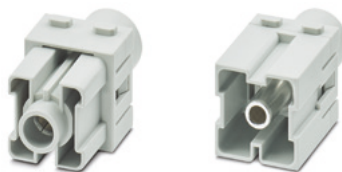
HDC MHP 100 FAS/ MAS



100A

Rated current: 100 A
 Rated voltage: 1000 V
 Connection Type: Axial screw connection
 Order No. (Female): 2748290000
 Order No. (Male): 2748280000
 Required slots: 2

HDC MHP 200 FAS/ MAS



200A

Rated current: 200 A
 Rated voltage: 1000 V
 Connection Type: Axial screw connection
 Order No. (Female): 2748250000
 Order No. (Male): 2748240000
 Required slots: 2

HDC MHP 200 PE FAS/ MAS

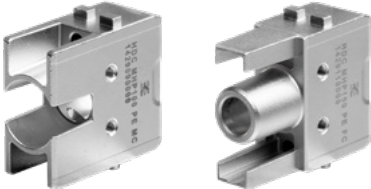


200A

Rated current: 200 A
 Rated voltage: 1000 V
 Connection Type: Axial screw connection
 Order No. (Female): 2748270000
 Order No. (Male): 2748260000
 Required slots: 2

HDC MHP100 PE FC / MC

New

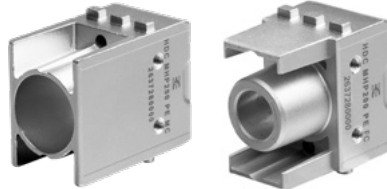


100A

Rated current: 100 A
 Rated voltage: 1000 V
 Connection Type: Crimp connection
 Order No. (Female): 1429110000
 Order No. (Male): 1429090000
 Required slots: 1

HDC MHP200 PE FC / MC

New



200A

Rated current: 200 A
 Rated voltage: 1000 V
 Connection Type: Crimp connection
 Order No. (Female): 2637310000
 Order No. (Male): 2637280000
 Required slots: 1.5

Power contacts



HDC MHP 70 FC/ MC



70A

Rated current: 70 A
 Rated voltage: 1000 V
 Connection Type: Crimp connection
 Order No. (Female): 2668180000
 Order No. (Male): 2668190000
 Required slots: 1

HDC MHP 70 FAS/ MAS



70A

Rated current: 70 A
 Rated voltage: 1000 V
 Connection Type: Axial screw connection
 Order No. (Female): 2748310000
 Order No. (Male): 2748300000
 Required slots: 1

Power

HDC MXH 2 FP/ MP



HX	
Rated current:	40 A
Rated voltage:	690 V
Connection Type:	Push In - connection
Order No. (Female):	2772830000
Order No. (Male):	2772800000
Required slots:	1

HDC MXH 2 FC/ MC



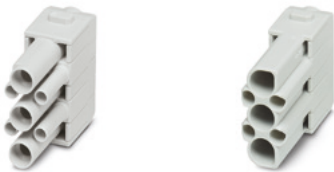
HX	
Rated current:	40 A
Rated voltage:	830 V
Connection Type:	Crimp connection
Order No. (Female):	2748350000
Order No. (Male):	2748340000
Required slots:	1

HDC MXH 2 FAS/ MAS



HX	
Rated current:	40 A
Rated voltage:	1000 V
Connection Type:	Axial screw connection
Order No. (Female):	2748330000
Order No. (Male):	2748320000
Required slots:	1

HDC MXH 3/4 FC/ MC



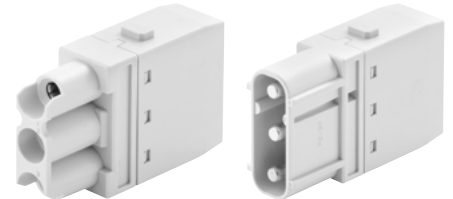
HX	
Rated current:	10 A
Rated voltage:	500 V
Connection Type:	Crimp connection
Order No. (Female):	2748370000
Order No. (Male):	2748360000
Required slots:	1

HDC MXH 3 FC/ MC



HX	
Rated current:	40 A
Rated voltage:	690 V
Connection Type:	Crimp connection
Order No. (Female):	1429350000
Order No. (Male):	1429340000
Required slots:	1

HDC MXH 3 FP/ MP



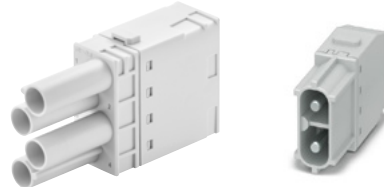
HX	
Rated current:	40 A
Rated voltage:	690 V
Connection Type:	Crimp connection
Order No. (Female):	2772790000
Order No. (Male):	2772780000
Required slots:	1

HDC MXH 4P FC/ MC



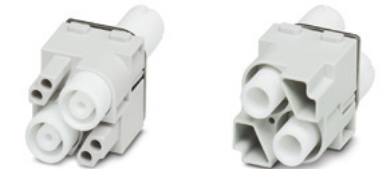
HX	
Rated current:	40 A
Rated voltage:	830 V
Connection Type:	Crimp connection
Order No. (Female):	1428970000
Order No. (Male):	1428950000
Required slots:	1

HDC MXH 4P FP/ MP



HX	
Rated current:	40 A
Rated voltage:	690 V
Connection Type:	Crimp connection
Order No. (Female):	2772810000
Order No. (Male):	2772820000
Required slots:	1

HDC MHE 2 HV FC/ MC



HE	
Rated current:	16 A
Rated voltage:	2900 V
Connection Type:	Crimp connection
Order No. (Female):	2748390000
Order No. (Male):	2748380000
Required slots:	2

CTIN CM 1.6/2.5

Equipment



Rated current:	-
Rated voltage:	-
Connection Type:	Crimp connection
Order No.:	9205430000

REMOVAL TOOL HX

Equipment



Rated current:	-
Rated voltage:	-
Connection Type:	Crimp connection
Order No.:	1002990000

Signal

HDC MHS 25 FC / MC

New



HS

Rated current: 4 A
 Rated voltage: 30 V
 Connection Type: Crimp connection
 Order No. (Female): 2748510000
 Order No. (Male): 2748500000
 Required slots: 1

HDC MBUS CT X/D 0.6/1.0

Equipment



Rated current: -
 Rated voltage: -
 Connection Type: Crimp connection
 Order No.: 2592650000

HDC MHD 12 FP / MP

PUSH IN



HD

Rated current: 10 A
 Rated voltage: 250 V
 Connection Type: PUSH IN connection
 Order No. (Female): 2748470000
 Order No. (Male): 2748460000
 Required slots: 1

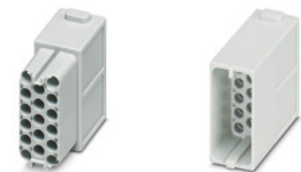
HDC MHD 12 FC / MC



HD

Rated current: 10 A
 Rated voltage: 250 V
 Connection Type: Crimp connection
 Order No. (Female): 1428850000
 Order No. (Male): 1428840000
 Required slots: 1

HDC MHD 17 FC / MC



HD

Rated current: 10 A
 Rated voltage: 160 V
 Connection Type: Crimp connection
 Order No. (Female): 2748490000
 Order No. (Male): 2748480000
 Required slots: 1

CTX CM 1.6/2.5

Equipment



Rated current: -
 Rated voltage: -
 Connection Type: Crimp connection
 Order No.: 9018490000

CTIN CM 1.6/2.5

Equipment



Rated current: -
 Rated voltage: -
 Connection Type: Crimp connection
 Order No.: 9205430000

REMOVAL TOOL HD

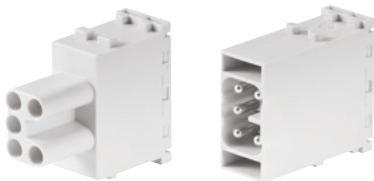
Equipment



Rated current: -
 Rated voltage: -
 Connection Type: Crimp contacts
 Order No.: 1866730000

HDC MHE 5 FP / MP

PUSH IN



HE

Rated current: 16 A
 Rated voltage: 400 V
 Connection Type: PUSH IN connection
 Order No. (Female): 2636190000
 Order No. (Male): 2636180000
 Required slots: 1

HDC MHE 5L FP / MP

PUSH IN



HE

Rated current: 16 A
 Rated voltage: 230 V
 Connection Type: PUSH IN connection
 Order No. (Female): 2748410000
 Order No. (Male): 2748400000
 Required slots: 1

HDC MHE 6 FC / MC



HE

Rated current: 16 A
 Rated voltage: 500 V
 Connection Type: Crimp connection
 Order No. (Female): 1429370000
 Order No. (Male): 1429360000
 Required slots: 1

Signal

HDC MHE 6P FC / MC



HE

Rated current: 16 A
Rated voltage: 830 V
Connection Type: Crimp connection
Order No. (Female): 1505660000
Order No. (Male): 1505650000
Required slots: 1

HDC MHE 8 FC / MC



HE

Rated current: 16 A
Rated voltage: 400 V
Connection Type: Crimp connection
Order No. (Female): 1428890000
Order No. (Male): 1428880000
Required slots: 1

HDC MHE 20 FC / MC



HE

Rated current: 16 A
Rated voltage: 500 V
Connection Type: Crimp connection
Order No. (Female): 1428930000
Order No. (Male): 1428910000
Required slots: 1

CTX CM 1.6/2.5

Equipment



Rated current: -
Rated voltage: -
Connection Type: Crimp connection
Order No.: 9018490000

CTIN CM 1.6/2.5

Equipment



Rated current: -
Rated voltage: -
Connection Type: Crimp connection
Order No.: 9205430000

REMOVAL TOOL HD

Equipment



Rated current: -
Rated voltage: -
Connection Type: Crimp connection
Order No.: 1866750000

Data - Megabit

HDC MMBIT 8 FC/MC M

New



HD

Rated current: 10 A
 Rated voltage: 48 V
 Connection Type: Crimp connection
 Order No. (Female): 3092830000
 Order No. (Male): 3092870000
 Required slots: 1

HDC MMBIT 8 FC/MC M SH

New



HD with shield transfer to the module frame

Rated current: 10 A
 Rated voltage: 48 V
 Connection Type: Crimp connection
 Order No. (Female): 3092860000
 Order No. (Male): 3092990000
 Required slots: 1

HDC MMBIT 8 FC/MC M2

New



HD for two cables

Rated current: 10 A
 Rated voltage: 48 V
 Connection Type: Crimp connection
 Order No. (Female): 3092840000
 Order No. (Male): 3092880000
 Required slots: 1

HDC MMBIT 8 FC/MC M2 SH

New



HD for two cables with shield transfer to the module frame

Rated current: 10 A
 Rated voltage: 48 V
 Connection Type: Crimp connection
 Order No. (Female): 3092850000
 Order No. (Male): 3092890000
 Required slots: 1

HDC-C-HD-BM/ SM0.14-0.37AU

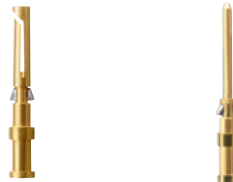
New



Rated current: -
 Rated voltage: -
 Connection Type: Crimp contacts
 Order No. (Female): 1651670000
 Order No. (Male): 1651620000

HDC-C-HD-BM/ SM0.5AU

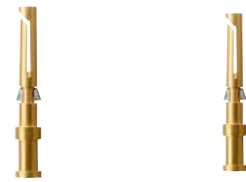
New



Rated current: -
 Rated voltage: -
 Connection Type: Crimp contacts
 Order No. (Female): 1651680000
 Order No. (Male): 1651630000

HDC-C-HD-BM/ SM0.75-1.00AU

New



Rated current: -
 Rated voltage: -
 Connection Type: Crimp contacts
 Order No. (Female): 1651670000
 Order No. (Male): 1651690000

HDC-C-HD-BM/ SM1.5AU

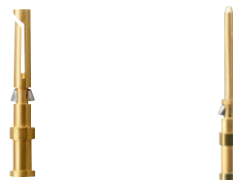
New



Rated current: -
 Rated voltage: -
 Connection Type: Crimp contacts
 Order No. (Female): 1651700000
 Order No. (Male): 1651650000

HDC-C-HD-BM/ SM2.5AU

New



Rated current: -
 Rated voltage: -
 Connection Type: Crimp contacts
 Order No. (Female): 1651710000
 Order No. (Male): 1651660000

Data - Megabit

CTX CM 1.6/2.5

Equipment



Rated current: -
 Rated voltage: -
 Connection Type: Crimp connection
 Order No.: 9018490000

REMOVAL TOOL HD

Equipment



Rated current: -
 Rated voltage: -
 Connection Type: Crimp contacts
 Order No.: 1866730000

Data - Gigabit

HDC MGBIT 8 FC / MC

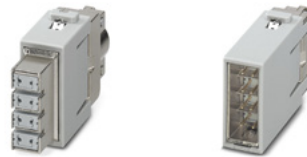


HS

Rated current: 5 A
 Rated voltage: 50 V
 Connection Type: Crimp connection
 Order No. (Female): 2748530000
 Order No. (Male): 2748520000
 Required slots: 1

HDC MMBIT 8 FC/MC M2 SH

New



HS with shield transfer to the module frame

Rated current: 5 A
 Rated voltage: 48 V
 Connection Type: Crimp connection
 Order No. (Female): 3092810000
 Order No. (Male): 3092820000
 Required slots: 1

HDC C HS BM/ SM 0.08-0.12 AU



Rated current: -
 Rated voltage: -
 Connection Type: Crimp contact
 Order No. (Female): 2748730000
 Order No. (Male): 2748710000

HDC C HS BM/ SM 0.2-0.5 AU



Rated current: -
 Rated voltage: -
 Connection Type: Crimp contact
 Order No. (Female): 2748720000
 Order No. (Male): 2748700000

HDC MBUS CT X/D 0.6/1.0

Equipment



Rated current: -
 Rated voltage: -
 Connection Type: Crimp contacts
 Order No.: 2592650000

HDC MBUS CL X/D

Equipment



Rated current: -
 Rated voltage: -
 Connection Type: Crimp contacts
 Order No. 0.6/1.0: 2592680000
 Order No. 0.09/0.5: 3125010000

REMOVAL TOOL HS

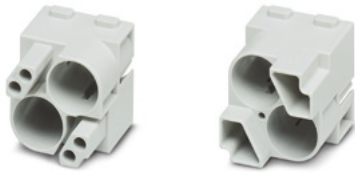
Equipment



Rated current: -
 Rated voltage: -
 Connection Type: -
 Order No.: 3131280000

Data - Gigabit

HDC MEMC 2



Rated current: 10 A
 Rated voltage: 50 V
 Connection Type: Crimp connection
 Order No. (Female): 2748570000
 Order No. (Male): 2748560000

HDC MBUS HD 4



Rated current: 10 A
 Rated voltage: 50 V
 Connection Type: Crimp connection
 Order No. (Female): 2748580000
 Order No. (Male): 2748590000

HDC MBUS HE 1



Rated current: 16 A
 Rated voltage: 50 V
 Connection Type: Crimp connection
 Order No. (Female): 2748600000
 Order No. (Male): 2748610000

HDC MBUS HD 1



Rated current: 10 A
 Rated voltage: 50 V
 Connection Type: Crimp connection
 Order No. (Female): 2748620000
 Order No. (Male): 2748630000

HDC MBUS HS 8



Rated current: 5 A
 Rated voltage: 50 V
 Connection Type: Crimp connection
 Order No. (Female): 2748640000
 Order No. (Male): 2748650000

HDC MHE 4X



Type: Terminal Block Module
 Rated current: 16 A
 Rated voltage: 250 V
 Connection Type: PUSH IN connection
 Order No. (Female): 2636060000
 Order No. (Male): 2636070000

HDC MHE 4X2



Type: Terminal Block Module with potential distribution
 Rated current: 16 A
 Rated voltage: 250 V
 Connection Type: PUSH IN connection
 Order No. (Female): 2636080000
 Order No. (Male): 2636090000

HDC MHE 4



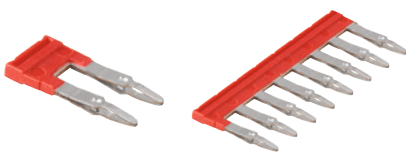
Type: Terminal Block Module
 Rated current: 16 A
 Rated voltage: 250 V
 Connection Type: PUSH IN connection
 Order No. (Female): 2635990000
 Order No. (Male): 2635980000

HDC MMARK 4



Type: Markers (64 pcs per card)
 Order No.: 2710590000

HDC MXSCC* 4X



Type: Cross-connector bridge
 2 to 12 pole
 Order No. (2 pole): 2709710000
 Order No. (12 pole): 2709820000

HDC MRJ45 GC



Type: RJ45 Gender Changer - mating side to all others
 Rated current: 1 A
 Rated voltage: 50 V
 Connection Type: Pin
 Order No.: 2592030000

HDC MRJ45 PCADP MC



Type: Adapter - RJ45 for patch cable
 Order No.: 2592260000

Data

HDC MRJ45 ABP MI



Type: EIA/TIA-568A, EIA/TIA-568B PROFINET
Order No.: 2592210000

HDC MRJ45 A MI



Type: EIA/TIA-568A
Order No.: 2592220000

HDC MRJ45 B MI



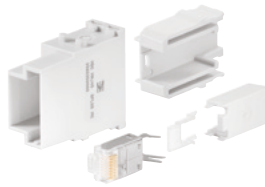
Type: EIA/TIA-568B
Order No.: 2592230000

HDC MRJ45 P MI



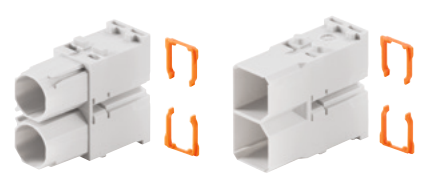
Type: Profinet
Order No.: 2592240000

HDC MRJ45 8 PLUG MC



Type: Module, Plug insert, RJ45 crimp
Rated current: 1 A
Rated voltage: 50 V
Connection Type: Crimp
Order No.: 2592250000

HDC MBUS



Type: Data module
Note: Requires WM Cable
Order No. (Female): 1429020000
Order No. (Male): 1428990000

Pneumatic

HDC MPN 2



Type: Two Pole Pneumatic module
Order No.: 2637320000

HDC MPN 3



Type: Three Pole Pneumatic module
Order No.: 2637340000

HDC MPN 6.0



Type: Pneumatic contact
Order No. (Female): 2637390000
Order No. (Male): 2637350000
Order No. (SOF): 2637400000

HDC MPN 1.6



Type: Pneumatic contact
Order No. (Female): 2637480000
Order No. (Male): 2637470000
Order No. (SOF): 2637490000

HDC MPN 3.0



Type: Pneumatic contact
Order No. (Female): 2637450000
Order No. (Male): 2637440000
Order No. (SOF): 2637460000

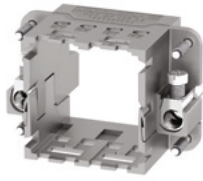
HDC MPN 4.0



Type: Pneumatic contact
Order No. (Female): 2637420000
Order No. (Male): 2637410000
Order No. (SOF): 2637430000

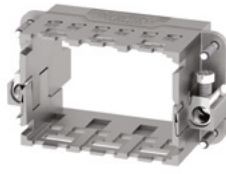
Frames

HDC MF 6B



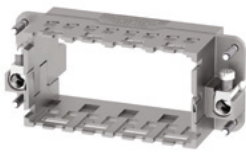
Housing Size: 6B = Size 3
 Order No. (AB): 1428920000
 Order No. (BA): 1428940000

HDC MF 10B



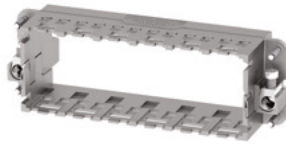
Housing Size: 10B = Size 4
 Order No. (AC): 1428960000
 Order No. (CA): 1428980000

HDC MF 16B



Housing Size: 16B = Size 6
 Order No. (AD): 1429010000
 Order No. (DA): 1429030000

HDC MF 24B



Housing Size: 24B = Size 8
 Order No. (AF): 1429050000
 Order No. (FA): 1429070000

Housing and Accessories

Housing Top Entry



Size: 3 Cable entry size: M25 Order No.: 2716700000
 Size: 4 Cable entry size: M32 Order No.: 2716720000
 Size: 6 Cable entry size: M40 Order No.: 2716730000
 Size: 8 Cable entry size: M40 Order No.: 2716740000

Housing Side Entry



Size: 3 Cable entry size: M25 Order No.: 2716750000
 Size: 4 Cable entry size: M32 Order No.: 2716760000
 Size: 6 Cable entry size: M40 Order No.: 2716770000
 Size: 8 Cable entry size: M40 Order No.: 2716780000

HDC AF WM Cover



Type: Cover for lower part of housing
 Size: 3 Order No.: 2716810000
 Size: 4 Order No.: 2716820000
 Size: 6 Order No.: 2716830000
 Size: 8 Order No.: 2716840000

HDC AF WM



Type: Adapters needed for mounting
 Order No. (Pk 20 no screws): 2716790000
 Order No. (2 pcs with screws): 2716800000

HDC MDU



Type: Dummy Module 1/2 space size
 Order No.: 1429040000

Moduplug Portfolio



Type	Description	Length	Qty.	Order No.
Cat. 6A, LSZH, gray	HDC RJ4501 MMSCAT6-0020	0.2 m	1 pc.	2661950020
	HDC RJ4501 MMSCAT6-0030	0.3 m	1 pc.	2661950030
	HDC RJ4501 MMSCAT6-0040	0.4 m	1 pc.	2661950040
	HDC RJ4501 MMSCAT6-0050	0.5 m	1 pc.	2661950050
	HDC RJ4501 MMSCAT6-0060	0.6 m	1 pc.	2661950060
	HDC RJ4501 MMSCAT6-0070	0.7 m	1 pc.	2661950070
	HDC RJ4501 MMSCAT6-0080	0.8 m	1 pc.	2661950080
	HDC RJ4501 MMSCAT6-0090	0.9 m	1 pc.	2661950090
	HDC RJ4501 MMSCAT6-0100	1.0 m	1 pc.	2661950100
	HDC RJ4501 MMSCAT6-0150	1.5 m	1 pc.	2661950150
	HDC RJ4501 MMSCAT6-0200	2.0 m	1 pc.	2661950200
	HDC RJ4501 MMSCAT6-0250	2.5 m	1 pc.	2661950250
	HDC RJ4501 MMSCAT6-0300	3.0 m	1 pc.	2661950300
	HDC RJ4501 MMSCAT6-0400	4.0 m	1 pc.	2661950400
	HDC RJ4501 MMSCAT6-0500	5.0 m	1 pc.	2661950500
	HDC RJ4501 MMSCAT6-0600	6.0 m	1 pc.	2661950600
	HDC RJ4501 MMSCAT6-0700	7.0 m	1 pc.	2661950700
	HDC RJ4501 MMSCAT6-0750	7.5 m	1 pc.	2661950750
	HDC RJ4501 MMSCAT6-0800	8.5 m	1 pc.	2661950800
	HDC RJ4501 MMSCAT6-0900	9.0 m	1 pc.	2661950900
HDC RJ4501 MMSCAT6-1000	10.0 m	1 pc.	2661951000	
HDC RJ4501 MMSCAT6-1500	15.0 m	1 pc.	2661951500	
HDC RJ4501 MMSCAT6-2000	20.0 m	1 pc.	2661952000	

Crimping contact

HD contact

Surface finish gold



Male (Surface finish gold)

HDC-C-HD-SM0.14-0.37AU	1651620000
HDC-C-HD-SM0.5AU	1651630000
HDC-C-HD-SM0.75-1.00AU	1651640000
HDC-C-HD-SM1.5AU	1651650000
HDC-C-HD-SM2.5AU	1651660000

Female (Surface finish gold)

HDC-C-HD-BM0.14-0.37AU	1651670000
HDC-C-HD-BM0.5AU	1651680000
HDC-C-HD-BM0.75-1.00AU	1651690000
HDC-C-HD-BM1.5AU	1651700000
HDC-C-HD-BM2.5AU	1651710000

HD contact

Surface finish silver



Male (Surface finish silver)

HDC-C-HD-SM0.14-0.37AG	1651520000
HDC-C-HD-SM0.5AG	1651530000
HDC-C-HD-SM0.75-1.00AG	1601750000
HDC-C-HD-SM1.5AG	1651550000
HDC-C-HD-SM2.5AG	1651560000

Female (Surface finish silver)

HDC-C-HD-BM0.14-0.37AG	1651570000
HDC-C-HD-BM0.5AG	1651580000
HDC-C-HD-BM0.75-1.00AG	1601760000
HDC-C-HD-BM1.5AG	1651600000
HDC-C-HD-BM2.5AG	1651610000

HE contact

Surface finish gold



Male (Surface finish gold)

HDC-C-HE-SM0.5AU	1651420000
HDC-C-HE-SM0.75-1.00AU	1651430000
HDC-C-HE-SM1.5AU	1651440000
HDC-C-HE-SM2.5AU	1651450000
HDC-C-HE-SM4.0AU	1651460000
HDC-C-HE-SM4.65AU	1116540000

Female (Surface finish gold)

HDC-C-HE-BM0.5AU	1651470000
HDC-C-HE-BM0.75-1.00AU	1651480000
HDC-C-HE-BM1.5AU	1651490000
HDC-C-HE-BM2.5AU	1651500000
HDC-C-HE-BM4.0AU	1651510000
HDC-C-HE-BM4.65AU	1116530000

HE contact

Surface finish silver



Male (Surface finish silver)

HDC-C-HE-SM0.5AG	1200500000
HDC-C-HE-SM0.75-1.00AG	1200600000
HDC-C-HE-SM1.5AG	1200700000
HDC-C-HE-SM2.5AG	1200800000
HDC-C-HE-SM4.0AG	1200900000

Female (Surface finish silver)

HDC-C-HE-BM0.5AG	1201100000
HDC-C-HE-BM0.75-1.00AG	1201200000
HDC-C-HE-BM1.5AG	1201300000
HDC-C-HE-BM2.5AG	1201400000
HDC-C-HE-BM4.0AG	1201500000

Crimping contact

40A HX contact

Surface finish silver



Male

HDC C HX SM1.5AG	1002910000
HDC C HX SM2.5AG	1002920000
HDC C HX SM4.0AG	1002930000
HDC C HX SM6.0AG	1002940000

Female

HDC C HX BM1.5AG	1002950000
HDC C HX BM2.5AG	1002960000
HDC C HX BM4.0AG	1002970000
HDC C HX BM6.0AG	1002980000

70A contact

Surface finish silver



Male

HDC MHP70 M 6	2668280000
HDC MHP70 M 6 P	2691190000
HDC MHP70 M 10	2668350000
HDC MHP70 M 10 P	2691240000
HDC MHP70 M 16	2668360000
HDC MHP70 M 16 P	2691250000
HDC MHP70 M 25	2668370000
HDC MHP70 M 25 P	2691260000

Female

HDC MHP70 F 6	2668210000
HDC MHP70 F 10	2668200000
HDC MHP70 F 16	2668220000
HDC MHP70 F 25	2668260000

100A contact

Surface finish silver



Male

HDC MHP100 M 10	1435750000
HDC MHP100 M 16	1435760000
HDC MHP100 M 25	1435770000
HDC MHP100 M 35	1435780000

Female

HDC MHP100 F 10	1435790000
HDC MHP100 F 16	1435810000
HDC MHP100 F 25	1435820000
HDC MHP100 F 35	1435830000

200A contact

Surface finish silver



Male

HDC MHP200 M 25	2514860000
HDC MHP200 M 35	2514870000
HDC MHP200 M 50	2514880000
HDC MHP200 M 70	2514890000

Female

HDC MHP200 F 25	2514820000
HDC MHP200 F 35	2514830000
HDC MHP200 F 50	2514840000
HDC MHP200 F 70	2514850000

Weidmüller – Your Partner in Industrial Connectivity

As experienced experts we support our customers and partners around the world with products, solutions and services in the industrial environment of power, signal and data. We are at home in their industries and markets and know the technological challenges of tomorrow. We are therefore continuously developing innovative, sustainable and useful solutions for their individual needs. Together we set standards in Smart Industrial Connectivity.

We cannot guarantee that there are no mistakes in the publications or software provided by us to the customer for the purpose of making orders. We try our best to quickly correct errors in our printed media.

All orders are based on our general terms of delivery, which can be reviewed on the websites of our group companies where you place your order. On demand we can also send the general terms of delivery to you.

Weidmüller Interface GmbH & Co. KG
Klingenbergstraße 26
32758 Detmold, Germany
T +49 5231 14-0
F +49 5231 14-292083
www.weidmueller.com

Personal support can
be found on our website:
www.weidmueller.com/contact

Made in Germany

03/2025/SMC