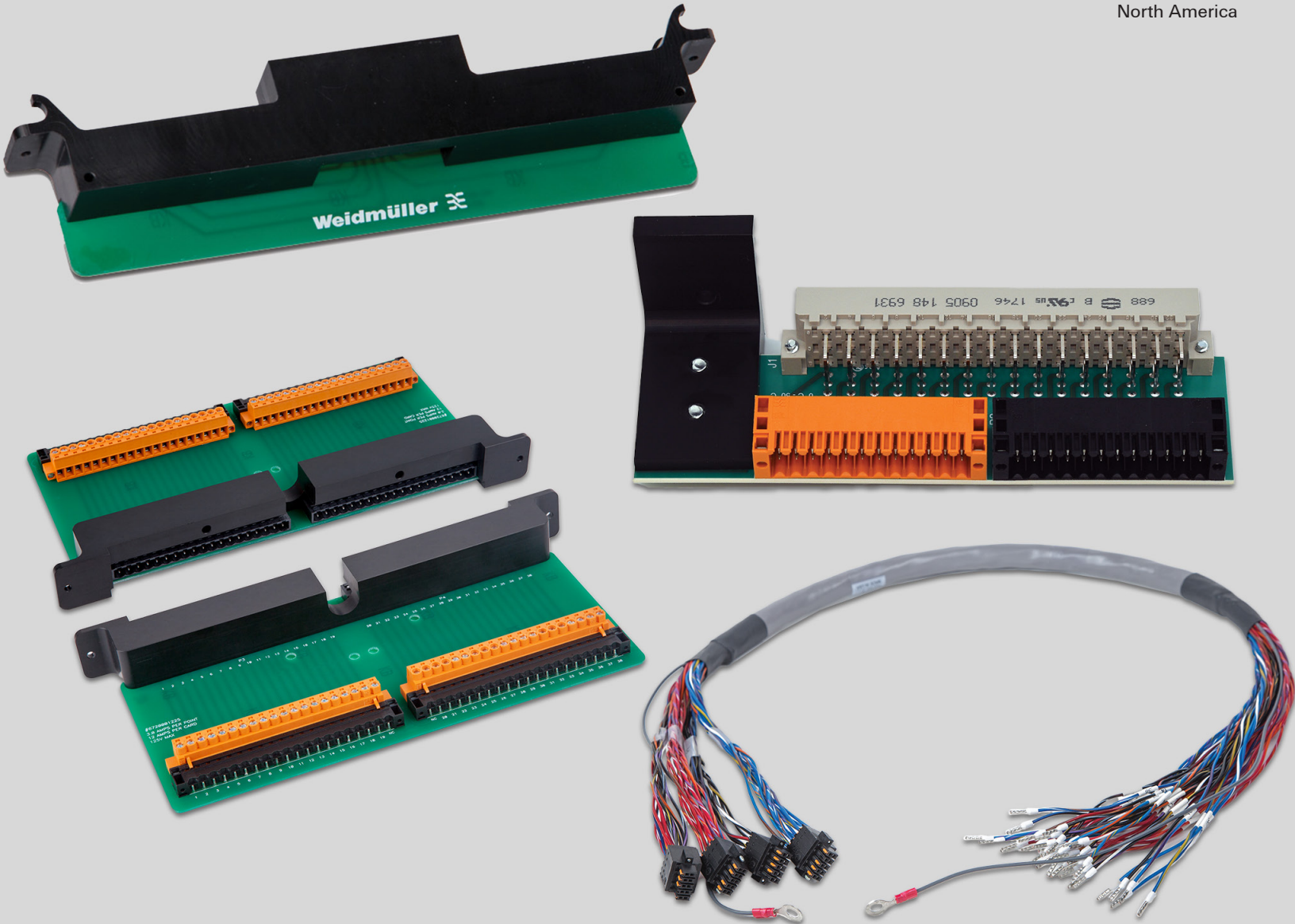


Migration Solutions

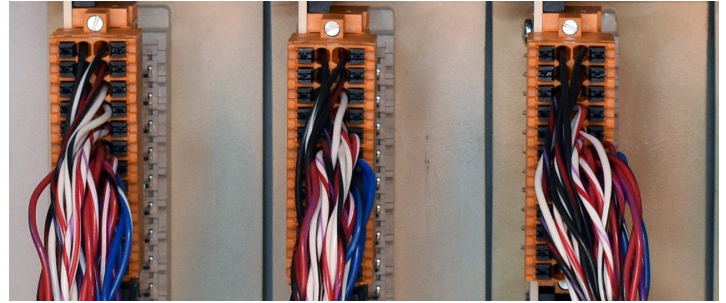
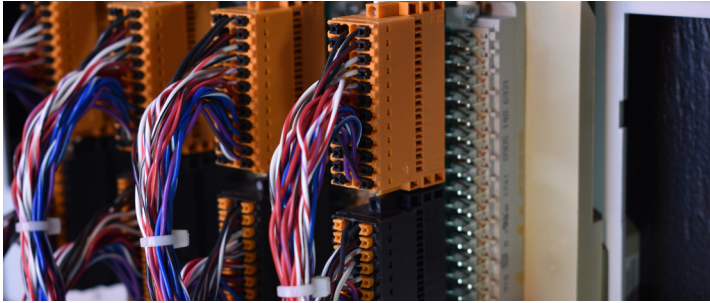
Catalog

North America



Streamline Your DCS Migration

Weidmüller's universal conversion/migration platform will substantially reduce the time and expense of updating your legacy **Siemens Moore APACS** system to any new DCS.



Global approvals



The card adapter is cURus as well as Class 1 Division 2 approved and the certified cables are UL and CSA listed. In addition, the cables are RoHS and FT4 rated at 300V.

Uniquely designed solution

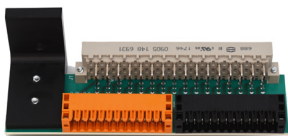
The key to Weidmüller's migration platform is in the design. It permits your existing field wiring to remain in place and undisturbed on the front panel adapter and eliminates the need to wire-trace or ring-out.

Compatibility means flexibility

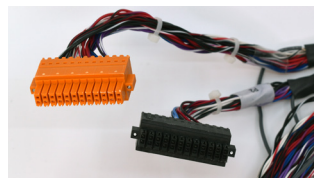
The assembly is a universal conversion/migration system for all legacy Siemens Moore APACS systems, enabling you to seamlessly migrate to any new control system.

Minimal components maximize migration efficiency

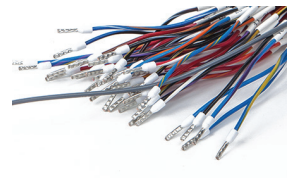
Weidmüller's migration solution includes a 48-point card adapter and a standard cable harness. Custom cable options are available on request at www.weidmuller.com/migration.



Card Adapter



Two 24-Pin Connectors



Flying Ferrule Leads



UL & CSA
Approved Cables

Benefits

- Keep your existing field terminations landed. No ring out needed!
- Perform your DCS conversion in hours instead of weeks.
- All components are plug-and-play with color coded connectors to eliminate any chance of wiring errors.

Migrate and test in hours, not weeks.

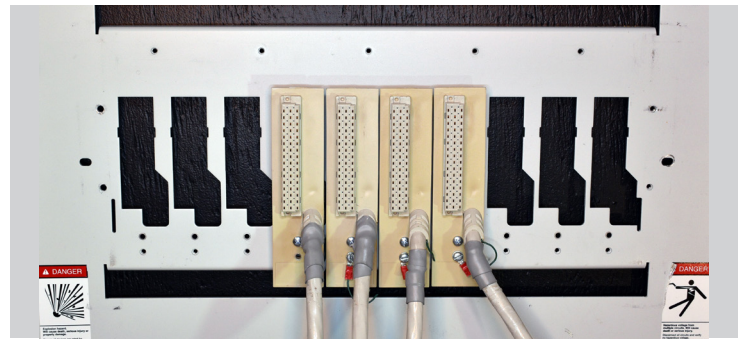
Here's how easy it is to migrate from your current DCS by using Weidmüller's patented migration platform:

Start



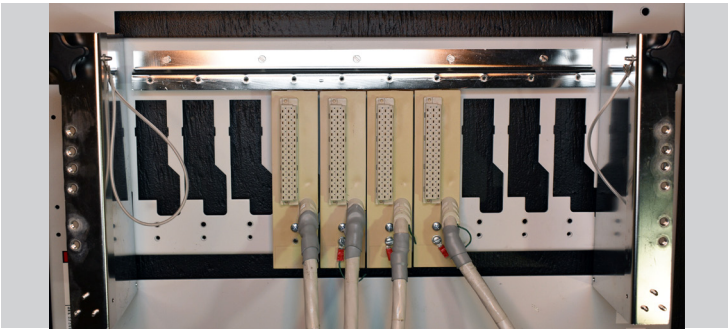
Existing Siemens Moore APACS system

Step 1



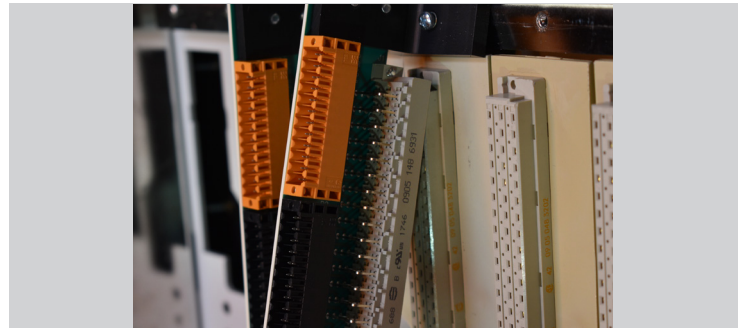
Remove all parts from Modulrac (I/O module, metal frame and MBUS Board) leaving only I/O connectors

Step 2



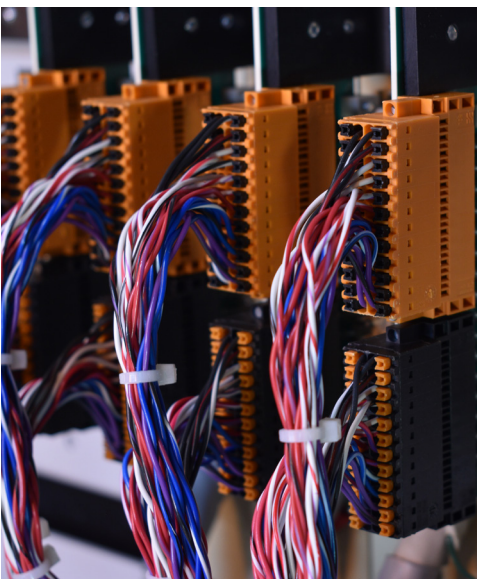
Install Adapter rack

Step 3



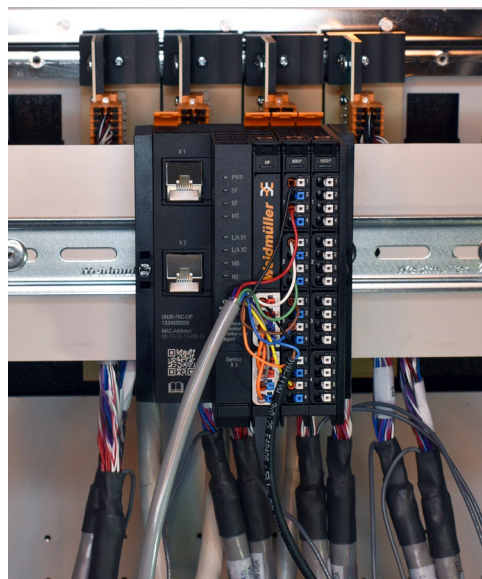
Install the Weidmüller Adapters

Step 4



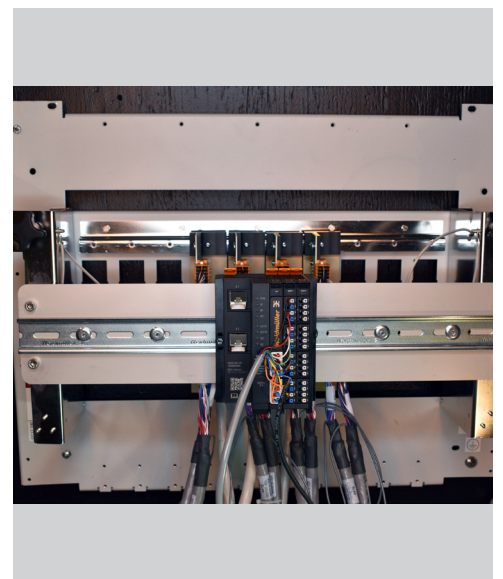
Connect cable with connector to Weidmüller Adapters

Step 5



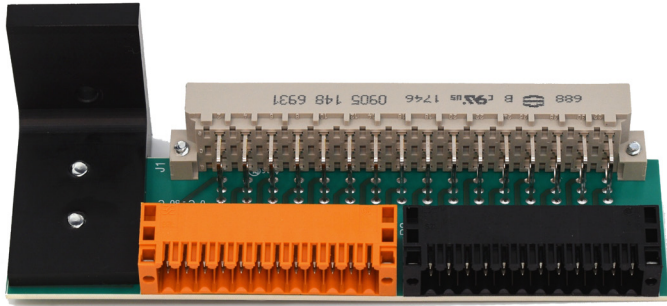
Connect other side of cable to new system

Finished



Completed and migrated DCS system

Siemens Moore APACS Universal Card Adapter



Features

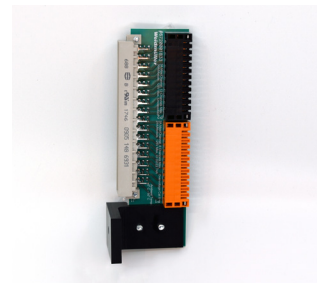
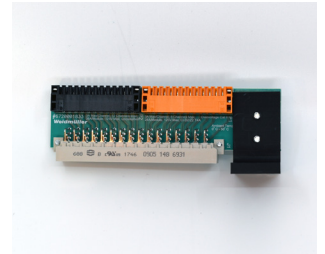
- 48-point cards
- Feed-through connections
- Siemens Moore APACS conversion to pluggable connector

Ordering data

Model	Qty	Order Number
48-point Siemens Moore APACS	1	7940121185

Technical data

Connection data		
Original Field Wire Adapter	DIN 41612 Type E Connector 48 Pin	
Weidmüller Migration Adapter	3.5 pitch S2L headers Two B2CF plugs with PUSH IN connection (Order Number: 1277970000 Black) (Order Number: 1277780000 Orange)	
Rated data		
Rated voltage	125VAC/125VDC max.	
Max. current per channel	Ordinary Locations	Hazardous Locations
	3A per point max. at 12 channels 36 Amps per whole assembly	3A per point max. at 8 channels 24 Amps per whole assembly
Operating temperature	0°C to 50°C	
Storage temperature	-30°C to 70°C	
Approvals		
Standards	cURus (E141197), Class 1 Division 2, Groups A, B, C, D T4A (E324123)	
Physicals		
	Designed to fit in existing I/O chassis	
Note:	Cabling not included	



Accessories

Type	Qty	Order Number
Siemens Moore APACS Adapter Rack	1	7508002174

Migration Cables

Select the cable configuration that best fits your application



Migration Cable Configurator

Customize your migration cable options

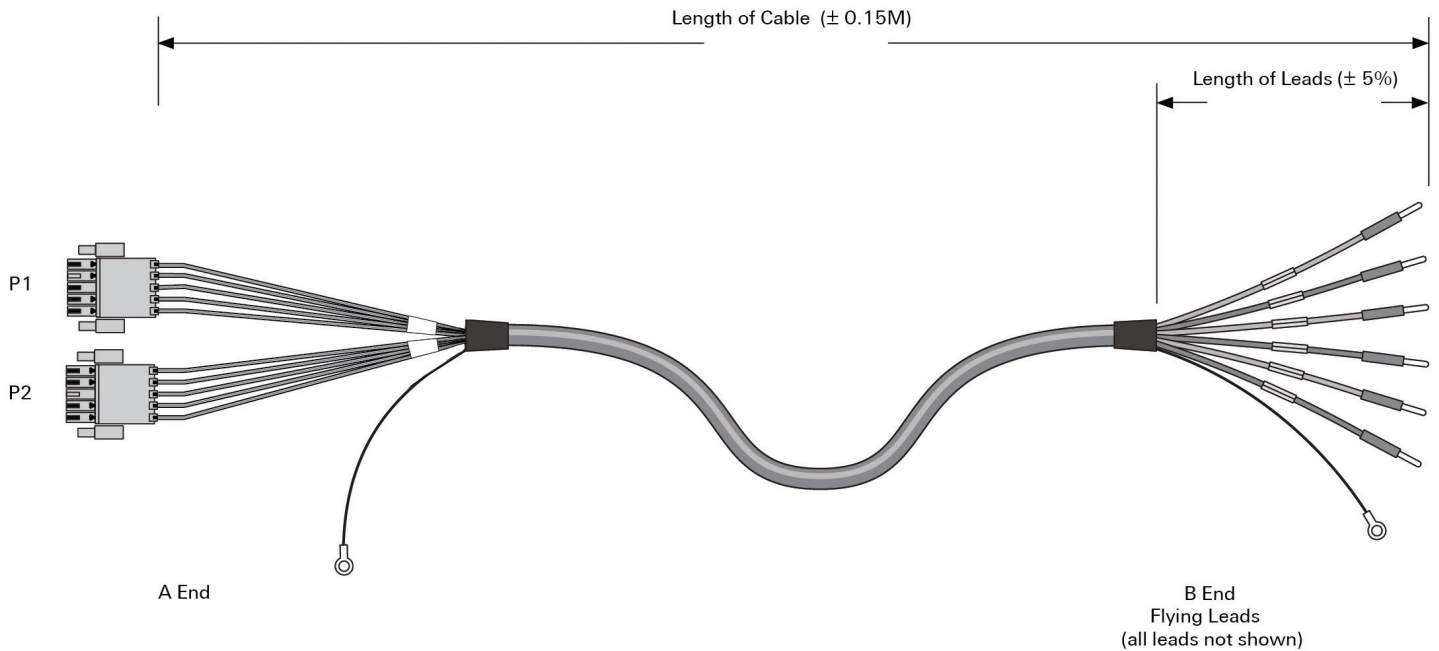
MIGRATION CABLE CONFIGURATOR [↗](#)

Weidmüller has teamed with designers to provide a simple and easy solution to migrate your control system. This migration system features universal card adapters and engineered cables.

Weidmüller can provide you with the components and information needed to design your migration bill of materials. To start designing your migration system, visit: www.weidmuller.com/migration

Engineered Cables

Specially engineered cables are designed and built to make the migration of your DCS simple and easy. The Migration Cable Configurator, a handy cable designer utility, is available to make cable design, selection, and cost evaluation straightforward and fast.



Example: SA1 - FFL10 - 22 - 010

SA1 - FFL 10 - 22 - 010

Marshalling Cable Siemens Moore APACS 48 Terminal Points	Flying Leads Type, B End		Flying Leads Length, B End*		Wire AWG		Length of Cable in Meters*	
	FFL	Ferruled Flying Leads	03	0.3 meters	22	22 AWG	1.5	1.5 meters
	BFL	Blunt-End Flying Leads	•	•			•	•
	TFL	Tinned Flying Leads	10	1.0 meters			005	5.0 meters
	RFL	Ring Lug Flying Leads	•	•			•	•
		99	9.9 meters			010	10.0 meters	
		•	•			•	•	
						100	100.0 meters	

* Notes:

- Lengths are customizable to your needs
- Custom cables are available on request

Schneider Electric Modicon Quantum Universal Card Adapter



Features

- Feed-through connections
- Modicon Quantum conversion to pluggable connector
- 40-point cards

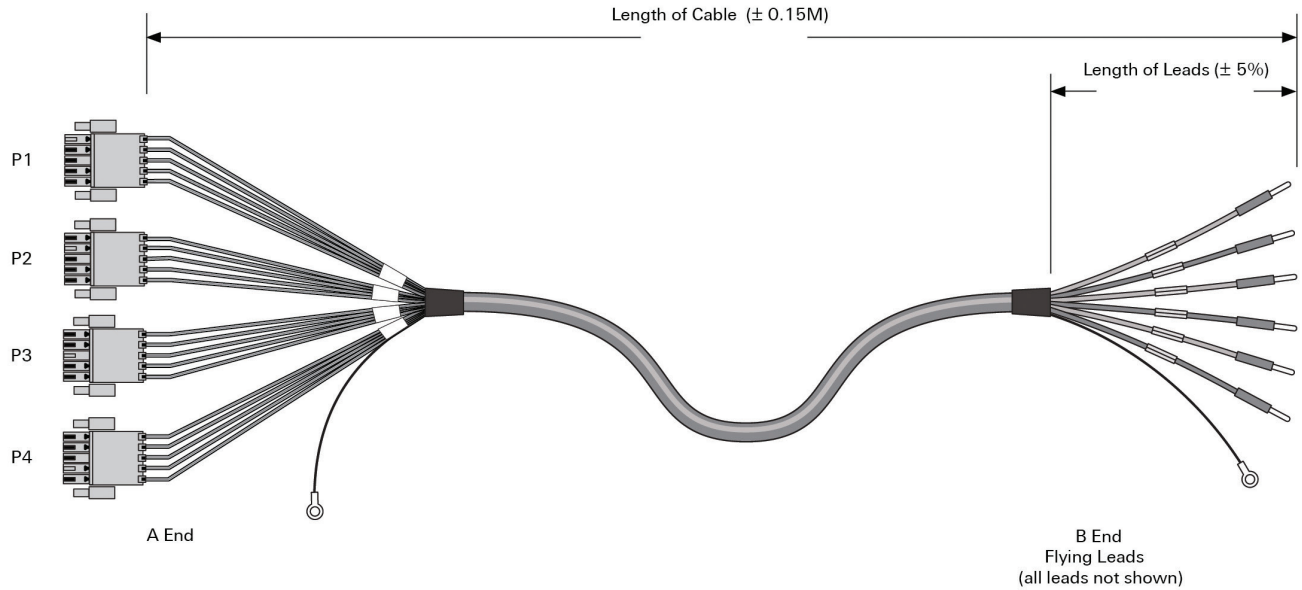
Ordering data

Type	Qty	Order Number
40-point Modicon Quantum	1	6720001822

Technical data

Connection data	
Original Field Wire Adapter	Card edge fingers on PCB for legacy style connectors
Weidmüller Migration Adapter	3.5 pitch S2CD - THR headers Four B2CF plugs with PUSH IN connection (Order Number 1277890000)
Rated data	
Rated voltage	125VAC/125VDC max.
Max. current per channel	4A per point max. 32 Amps per whole assembly
Operating temperature	-20°C to 50°C 0°C to 50°C (UL)
Storage temperature	-30°C to 70°C
Approvals	
Standards	cURus (E141197)
Physicals	
	Designed to fit in existing I/O chassis
Note:	Cabling not included

Modicon Quantum Migration Cables



Example: MQ1 - FFL10 - 18 - 010

MQ1 - FFL 10 - 18 - 010

Marshalling Cable Modicon Quantum 40 Terminal Points	Flying Leads Type, B End		Flying Leads Length, B End*		Wire AWG		Length of Cable in Meters*	
		FFL	Ferruled Flying Leads	03	0.3 meters	22	22 AWG	1.5
	BFL	Blunt-End Flying Leads	•	•			•	•
	TFL	Tinned Flying Leads	10	1.0 meters	18	18 AWG	005	5.0 meters
	RFL	Ring Lug Flying Leads	•	•			•	•
			99	9.9 meters			010	10.0 meters
			•	•			•	•
							100	100.0 meters
							•	•

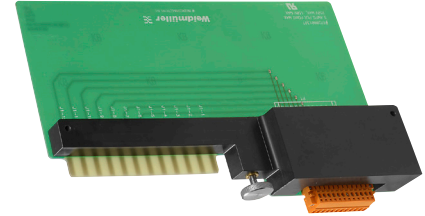
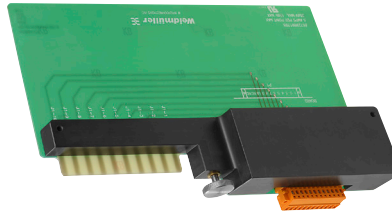
* Notes:

- Lengths are customizable to your needs
- Custom cables are available on request

Visit www.weidmuller.com/migration to design your own custom migration cables

Allen-Bradley PLC 5 1771 Universal Card Adaptors

- Feed through connections
- PLC 5 1771 conversion to pluggable connector(s)
- 10-, 12-, 18-, 21- or 40-point cards

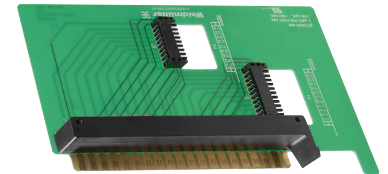
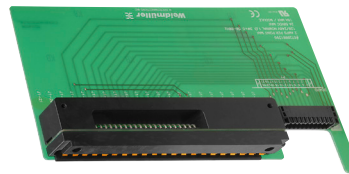


Technical data

Connection data	
Process side	Card edge fingers on PWB for legacy style connectors
Type	OEM Connector
Control side	One 3.5 pitch 12-pin SL header
Type	Screw type connection
Rated data	
Rated voltage	250V max., 150V max. (UR)
Max. current per channel	5A
Operating temperature	0°C to +50°C
Storage temperature	0°C to +50°C
Approvals	
Standards	cURus (E141197)
Physicals	
	Designed to fit in existing I/O rack
Note	Cabling not included

Ordering data

Type	Qty	Order Number
10-point PLC 5 1771-WA/WC carrier	1	6720001398
Type	Qty	Order Number
12-point PLC 5 1771-WB/WD carrier	1	6720001397
Note		



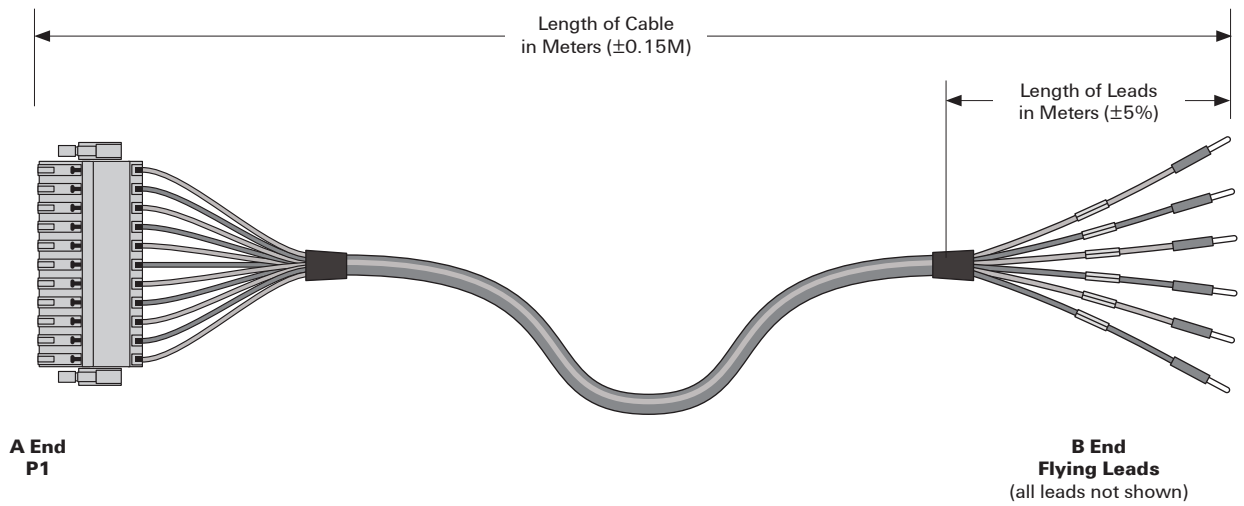
Technical data

Connection data	
Process side	Card edge fingers on PWB for legacy style connectors
Type	OEM Connector
Control side	One 3.5 pitch 22-pin S2L header
Type	Tension type connection
Rated data	
Rated voltage	150V max.
Max. current per channel	5A per point max. 10A per whole assembly
Operating temperature	0°C to +50°C
Storage temperature	0°C to +50°C
Approvals	
Standards	cURus (E141197)
Physicals	
	Designed to fit in existing I/O rack
Note	Cabling not included

Ordering data

Type	Qty	Order Number
18-point PLC 5 1771-WI carrier	1	6720001399
Type	Qty	Order Number
21-point PLC 5 1771-WG carrier	1	7940125466
21-point PLC 5 1771-WH/WHF/WHFB carrier	1	7940125460
Type	Qty	Order Number
40-point PLC 5 1771-WN carrier	1	6720001400
Note		

PLC 5 Migration Cables



Example: MCP52FFL101812010

Marshalling Cable PLC5		MC	P52	FFL	10	18	12	010	Length of Cable in Meters*		
Cable Entry, A End		Lead Type, B End		Length of Leads, B End*		Wire AWG		No. of Wires		Length of Cable in Meters*	
P51	10 Terminal Points	FFL	Ferruled Flying Leads	03	0.3 meters	22	22 AWG	10	10 Points	1.5	1.5 meters
P52	12 Terminal Points	BFL	Blunt-End Flying Leads	05	0.5 meters	18	18 AWG	12	12 Points	005	5.0 meters
P53	18 Terminal Points	TFL	Tinned Flying Leads	10	1.0 meters			18	18 Points	010	10.0 meters
P54	21 Terminal Points	RFL	Ring Lug Flying Leads	15	1.5 meters			21	21 Points	100	100.0 meters
P55	40 Terminal Points			99	9.9 meters			40	40 Points		

*Note: Lengths can be customized to your needs

Visit www.weidmuller.com/migration to design your own custom migration cables

Honeywell IPC 620 Universal Card Adaptors

- Feed through connections
- IPC-620 conversion to pluggable connector(s)
- 12-, 22-, 24-, 34- or 38-point cards



Technical data

Connection data					
Process side	Card edge fingers on PWB for legacy style connectors	Card edge fingers on PWB for legacy style connectors	Card edge fingers on PWB for legacy style connectors	Card edge fingers on PWB for legacy style connectors	Card edge fingers on PWB for legacy style connectors
Type	Tension Clamp, OEM	Tension Clamp, OEM	Tension Clamp, OEM	Tension Clamp, OEM	Tension Clamp, OEM
Control side	One 3.5 pitch 12-point S2L connector	One 3.5 pitch 12-point S2L connector	One 3.5 pitch 22-point S2L connector	One 3.5 pitch 22-point S2L connector	One 3.5 pitch 22-point S2L connector
Type	Tension type connection	Tension type connection	Tension type connection	Tension type connection	Tension type connection
Rated data					
Rated voltage	150V max.	150V max.	150V max.	150V max.	150V max.
Max. current per channel	5A	5A	5A	5A	5A
Operating temperature	0°C to +50°C	0°C to +50°C	0°C to +50°C	0°C to +50°C	0°C to +50°C
Storage temperature	0°C to +50°C	0°C to +50°C	0°C to +50°C	0°C to +50°C	0°C to +50°C
Approvals					
Standards	cURus (E141197)	cURus (E141197)	cURus (E141197)	cURus (E141197)	cURus (E141197)
Physicals					
	Designed to fit in existing I/O rack	Designed to fit in existing I/O rack	Designed to fit in existing I/O rack	Designed to fit in existing I/O rack	Designed to fit in existing I/O rack
Note					
	Cablings not included	Cablings not included	Cablings not included	Cablings not included	Cablings not included

Ordering data

		Type	Qty	Order Number			Type	Qty	Order Number
		12-point IPC-620 carrier	1	6720000787			22-point IPC-620 carrier	1	6720000788
		Reference Honeywell Terminal Block 621-9949					Reference Honeywell Terminal Block 621-9950		
Note									



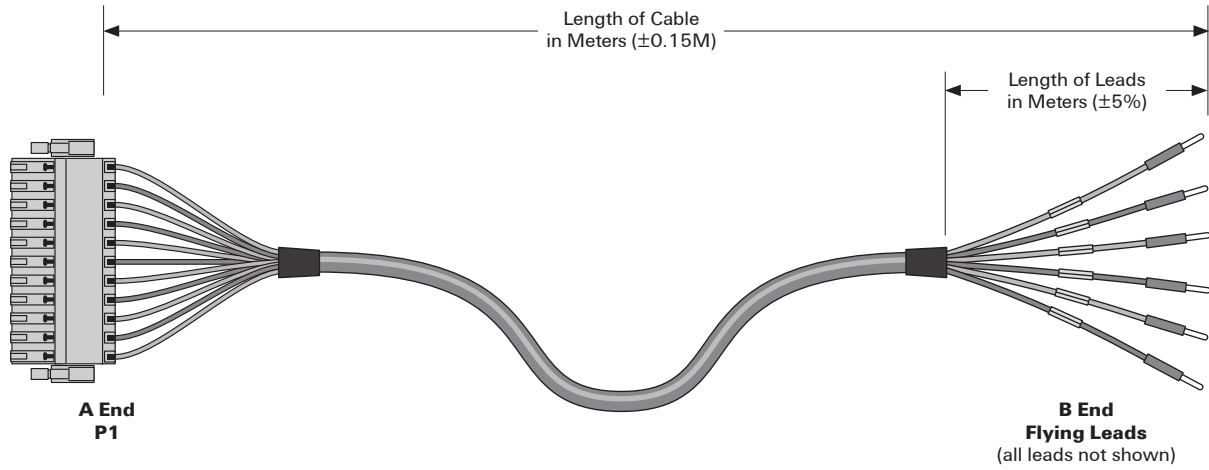
Technical data

Connection data							
Process side	Two SL 5.00 pitch headers to mate to legacy connectors (2 x 19 points – 38 points total)	One 24-point SL 5.00 pitch header to mate to legacy connectors	One 24-point SL 5.00 pitch header to mate to legacy connectors	Two SL 5.00 pitch headers to mate to legacy connectors (2 x 17 points – 34 points total)	Two SL 5.00 pitch headers to mate to legacy connectors (2 x 17 points – 34 points total)	Two SL 5.00 pitch headers to mate to legacy connectors (2 x 17 points – 34 points total)	Two SL 5.00 pitch headers to mate to legacy connectors (2 x 17 points – 34 points total)
Type	Screw type connection, OEM	Screw type connection, OEM	Screw type connection, OEM	Screw type connection, OEM	Screw type connection, OEM	Screw type connection, OEM	Screw type connection, OEM
Control side	Two 5.08 pitch 20-point SL headers	One 3.5 pitch 24-point S2L header	One 3.5 pitch 24-point S2L header	Two 5.08 pitch 20-pin SL headers	Two 5.08 pitch 20-pin SL headers	Two 5.08 pitch 20-pin SL headers	Two 5.08 pitch 20-pin SL headers
Type	Screw type connection	Tension type connection	Tension type connection	Screw type connection	Screw type connection	Screw type connection	Screw type connection
Rated data							
Rated voltage	125V max.	50V max.	50V max.	125V max.	125V max.	125V max.	125V max.
Max. current per channel	3A per point max. 10A per whole assembly	3A per point max. 10A per whole assembly	3A per point max. 10A per whole assembly	5A per point max. 12A per whole assembly	5A per point max. 12A per whole assembly	5A per point max. 12A per whole assembly	5A per point max. 12A per whole assembly
Operating temperature	0°C to +50°C	0°C to +50°C	0°C to +50°C	0°C to +50°C	0°C to +50°C	0°C to +50°C	0°C to +50°C
Storage temperature	0°C to +50°C	0°C to +50°C	0°C to +50°C	0°C to +50°C	0°C to +50°C	0°C to +50°C	0°C to +50°C
Approvals							
Standards	cURus (E141197)	cURus (E141197)	cURus (E141197)	cURus (E141197)	cURus (E141197)	cURus (E141197)	cURus (E141197)
Physicals							
	Designed to fit in existing I/O rack	Designed to fit in existing I/O rack	Designed to fit in existing I/O rack	Designed to fit in existing I/O rack	Designed to fit in existing I/O rack	Designed to fit in existing I/O rack	Designed to fit in existing I/O rack
Note							
	Cablings not included	Cablings not included	Cablings not included	Cablings not included	Cablings not included	Cablings not included	Cablings not included

Ordering data

		Type	Qty	Order Number			Type	Qty	Order Number
		38-point IPC-620 carrier	1	6720001225			24-point IPC-620 carrier	1	6720001226
		Ref. Honeywell Terminal Block 621-9977 or -9976					Ref. Honeywell Terminal Block 621-9954		
Note									

IPC 620 Migration Cables



Example: MCB2LFFL101822010

Marshalling Cable IPC 620	MC	B2L	FFL	10	18	22	010				
	Cable Entry, A End	Lead Type, B End	Length of Leads, B End*		Wire AWG		No. of Wires	Length of Cable in Meters*			
B1L	12 Terminal Points	FFL	Ferruled Flying Leads	03	0.3 meters	22	22 AWG	12	12 Points	1.5	1.5 meters
B2L	22 Terminal Points	BFL	Blunt-End Flying Leads	•	•	18	18 AWG	22	22 Points	005	5.0 meters
B3L	24 Terminal Points	TFL	Tinned Flying Leads	10	1.0 meters			24	24 Points	010	10.0 meters
B4L	38 Terminal Points	RFL	Ring Lug Flying Leads	•	•			38	38 Points	100	100.0 meters
B5L	34 Terminal Points			99	9.9 meters			34	34 Points		

Visit www.weidmuller.com/migration to design your own custom migration cables

Weidmuller – Partner in Industrial Connectivity

As experienced experts we support our customers and partners around the world with products, solutions and services in the industrial environment of power, signal and data. We are at home in their industries and markets and know the technological challenges of tomorrow. We are therefore continuously developing innovative, sustainable and useful solutions for their individual needs. Together we set standards in Industrial Connectivity.

Weidmuller, Canada

10 Spy Court
Markham, Ontario L3R 5H6
Telephone: (800) 268-4080
Email: info1@weidmuller.ca
Website: www.weidmuller.ca

Weidmuller, Mexico

Blvd. Hermanos Serdán 698,
Col. San Rafael Oriente
Puebla, Puebla, Mexico
C.P. 72029
Telephone: 01 222 2686267
Email: clientes@weidmuller.com.mx
Website: www.weidmuller.com.mx

Weidmuller, United States

821 Southlake Blvd.
Richmond, Virginia 23236
Telephone: (800) 849-9343
Email: info@weidmuller.com
Website: www.weidmuller.com