

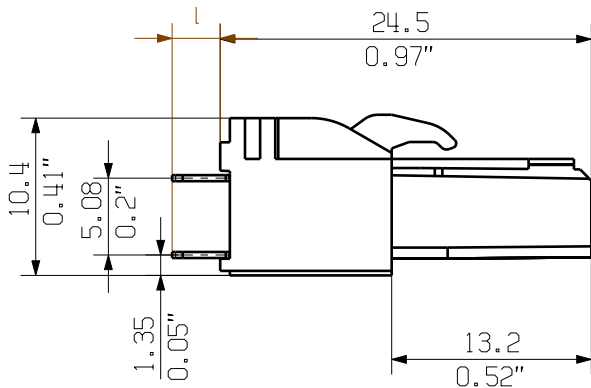
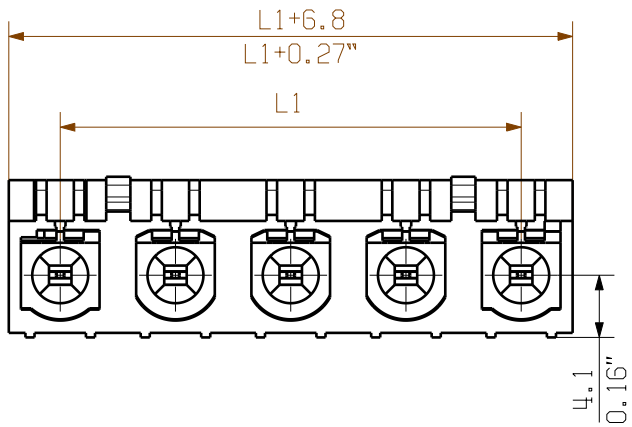
The reproduction, distribution and utilization of this document as well as the communication of its contents to others without explicit authorization is prohibited. Offenders will be held liable for the payment of damages. Weidmueller exclusively reserves the right to file for patents, utility models or designs.

© Weidmueller Interface GmbH & Co. KG

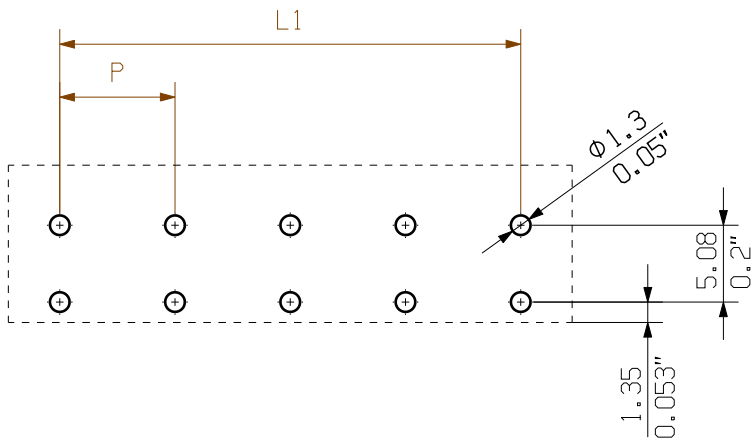
Dimensions without tolerances are no check dimensions

The English version is binding

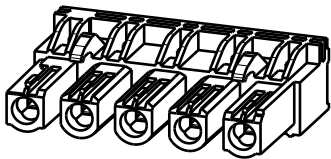
SHOWN: BLL7.62HP/05/180 3.2 SN



HOLE PATTERN



M 1:1



KUNDENZEICHNUNG
CUSTOMER DRAWING

For the mounting of PCBs, it should be noted that the rated data relates only to the PCB components alone.
The necessary creepage and clearance paths must be observed in connection with the respective applicant in accordance to IEC 664 / VDE 0110.
The current-carrying capacity and pitch tolerance is to be determined according to DIN IEC 326 part 3 very fine.

Weidmüller PCB components are tested to the DIN EN 61984 standard, and are valid for its field of application.
Provided that the components are used to the intended purpose, all requirements with respect to the occurring of electrical, mechanical, thermic and corrosive stress will be satisfied.

3,2
4,5
pin length l

12	83,82	3,30
11	76,20	3,00
10	68,58	2,70
9	60,96	2,40
8	53,34	2,10
7	45,72	1,80
6	38,10	1,50
5	30,48	1,20
4	22,86	0,90
3	15,24	0,60
2	7,62	0,30
n	L1 (mm)	L1 (inch)

	DIN ISO 2768-m	94360/4	00	Weidmüller	Cat.no.: .	3 50817 05
		11.05.17 HELIS_MA				
		Modification		Drawing no. Issue no.		
		Date	Name	Sheet 01 of 03 sheets		
Scale: 2:1		Drawn	21.09.2009	BLL 7.62HP/.../180...		
Supersedes: .		Responsible		BUCHSENLEISTE		
		Checked	08.06.2018	SOCKET BLOCK		
		Approved	LANG_T	Product file: BLL7.62HP		
					7373	